



window on **wakefield**

Your Local News

Community News for the Wakefield Area

30 Edward St, Wakefield

Information and photos from the Waimea South Historical Society Inc

We are on the way to returning this building to its former glory.

Waimea South Historical Society had a great time the first week in March, with artist Rose Shepard restoring her 30 year old murals at 30 Edward St Wakefield.

She was assisted by local society members plus community people. Rose lived in this property which has an interesting history, told in many local history books. This restoration has also been supported by the Tasman District Council and Resene paints.

More restoration is planned soon for the front verandah over the footpath as we now have some successful grants to help us with this. So number 30 will have this much needed facelift to help it keep telling its story for future generations.



Photos show Rose and friends as she worked hard bringing back the faded murals telling Wakefields history of some of its timeless buildings.

Be sure to stop by and have a look.



WINDOW ON WAKEFIELD

How it works...

Window on Wakefield is produced and published by Waimea South Community Facility Charitable Trust. All businesses advertising in this publication incur a cost for the advertising space allocated, depending on the size and location of the advertisement. The funds raised from this advertising are used to cover the costs of printing Window on Wakefield. No parties are paid for the time involved with editing, coordinating and publishing this paper. It is the intention that if surplus funds are raised from advertising, that these will be held to be used for other community projects. The bank reconciliations and financial reports related to this account will be made available to any person who wishes to view them.

Content...

Window on Wakefield is a community newspaper, and as such, we look forward to having articles and content contributed by our community. If you wish to submit a one off article, or suggest some regular content, please make contact with Sonia on 541 9005 or email windowonwakefield@gmail.com and read the Terms and Conditions below.

We try to ensure information published is truthful and accurate, but do not check the facts of the articles and therefore cannot attest to their validity. While all reasonable care is exercised, we do not accept liability for any loss whatsoever incurred through our errors, acts or omissions in relation to the content of an article, or for any consequences of readers relying on the information published. Opinions expressed by contributors do not necessarily represent the views of the Waimea South Community Facility Charitable Trust, nor are they necessarily endorsed by the Editor or Publisher.

Advertising...

If your business wishes to advertise in Window on Wakefield, please make contact with Genie on 027 306 4237 or email info@promoteyou.co.nz and a rate card will be sent.

TERMS AND CONDITIONS REGARDING PUBLISHING OF CONTENT

- a. All articles and other content submitted for publishing must disclose the author's name or where the article/content is contributed by a community group, then that community group's name.
- b. All images should be provided to us in a high quality PDF format. We take no responsibility for the quality of reproduction for images that are not supplied to us in this format.
- c. If you wish to make changes to an article or content already submitted, please ensure these are communicated to us before the relevant deadline date.
- d. When you submit an article or other content for publishing you:
 - agree that the submitted material and/or images can be reproduced by the Editor or Publisher at any time without your prior approval
 - agree that all photographs submitted for publishing are provided free of charge, and the approval to print has been obtained from any persons shown in the photo - this is the responsibility of the person submitting the photo
 - acknowledge that all material is held by us at your risk and is not insured by us. Material will only be returned on request and may otherwise be destroyed by us
 - warrant and undertake that no statement, image, representation or information contained in your supplied article or content:
 - * is or is likely to be misleading or deceptive;
 - * is at all defamatory, in breach of copyright, trademark or other intellectual or industrial property right;
 - * is otherwise in breach of the Copyright Act 1994, Defamation Act 1992, or any provision of any Statute, Regulation or rule of law.
- e. We reserve the right to decline the publication of any article or any content whatsoever on any grounds that we in our absolute discretion see fit.



Jill O'Brien

R D 1 Wakefield
Rural Mail Contractor
**FOR ALL YOUR
MAIL NEEDS**

Stamps, Parcels, Freight
Phone 541 8963
Mobile 027 324 2126

**DID YOUR BUSINESS
MISS OUT THIS TIME**



**DON'T DESPAIR
WE HAVE SAVED
A SPOT FOR THE NEXT
PUBLICATION
JUST FOR YOUR BUSINESS**

**Give us a call
027 306 4237
or
Email
info@promoteyou.co.nz**

NEXT EDITION

We do our best to have it out the first full week of each month
All Advertising to be submitted by the 20th of the Month prior
All Content to be submitted by the **23rd** of the Month prior
For Advertising please contact Promote You 027 306 4237

For Content please contact All Accounts Matter Ltd 541 9005 or 03 541 9055 if calling from a cellphone



Willow Bank Heritage Village

by Medea Grieder-George, Event Co-ordinator

March has been an exciting and busy month here at Willow Bank! Every Wednesday we've hosted our Welcome Wednesdays, and they've been a real joy – a lovely opportunity for visitors to explore the village, take in the sights, and experience a little slice of history. A highlight for us was 18th March, when Willow Bank became a stop for the vintage cars taking part in the Vero International Festival of Historic Motoring. What a fantastic week long celebration for our region! Seeing the cars travel through the village truly brought Willow Bank to life, and we extend a big congratulations to the organisers for such a successful event.

At the time of writing, we are looking forward to hosting **Pawsome Wednesday on 25th March** – a special day for our four-legged visitors. We're sure it will be a fun-filled occasion, with plenty of treats for our furry friends.

March also saw a beautiful wedding take place here at Willow Bank on 20th March. The couple chose our village for their ceremony before enjoying a relaxed High Tea with family and friends. If you're looking for a unique and charming venue for your own special day, Willow Bank could be just the place.

Our **Open Day on 22nd March** was another highlight. The burger bar was buzzing, milkshakes were in high demand, and many visitors told us it was their first time experiencing the village. If you know someone who hasn't visited yet, why not spread the word – or better yet, bring them along! A big thank you once again to all the volunteers who made our Open Day so memorable for our visitors. A special mention to Peter, who played the street organ throughout the day – a pure delight for the ears and a wonderful addition to the village atmosphere.

Fluttering Visitors

The butterflies are still fluttering around the village, encouraged by the many plants available for them. Christine has released 226 butterflies this season, and with so many flowers in bloom, visitors are delighted watching them dance among the gardens, adding a touch of magic to Willow Bank.

Coming Up at Willow Bank

We have plenty to look forward to in the coming weeks:

- **19th April – Apple Harvest Open Day:** One of our most popular events! Bring your own apples or use ours, press them using traditional wooden presses, and take home fresh juice.
- **29th April – Welcome Wednesday:** Enjoy a relaxed midweek visit and soak up the charm of the village.
- **8th May – High Tea:** Bookings are essential via our website for this elegant afternoon experience.

There's always something happening at Willow Bank. For more information, bookings, or to stay up to date, visit www.willowbankwakefield.co.nz, or follow us on Facebook and Instagram.





LANDSCAPE ROCK & GRAVEL

WE CAN DELIVER TO YOU

Drainage metal | Hard fill
Basecourse | Topcourse
Landscape rock | Lime

566 CHURCH VALLEY RD, WAKEFIELD
Ph: 541 9093 wakefieldquarry.co.nz



Wakefield Quarry
Getting it right on the ground.

**FIX UP
SET UP
BACK UP
CLEAN UP
TABLETS &
COMPUTERS**

In Nelson
since
1997
**mobile
computing**

**548 1787
027 224 0955**

Fran's the Man!
fran@mobilecomputing.co.nz
**Still no call-out fee &
we still come to you.**

mtf 
Your local money experts
NELSON

Saskia is local to the Wakefield region. With a deep understanding of the local area and a commitment to personalized service, Saskia is here to help you navigate your financial journey.

Get in touch today.  027 819 3167
 saskia.roeske@mtf.co.nz
 175 Haven Road
 mtf.co.nz/nelson

Responsible lending criteria and checks, terms and conditions apply. See mtf.co.nz/terms



PROPERTY MAINTENANCE



Enviro Horticulture
Grafting & Property Maintenance

Services include:

Old man's beard & passionfruit control
Re vegetation projects • Planting and plant advice
Professional grafting • Specialist fruit tree pruning
Scrub cutting • Expert weed control
Lawn mowing • Soft landscaping



Phone Rob Ketel
021 294 2788

35 Pigeon Valley South Branch Rd,
RD2, Wakefield 7096

National certificates in Amenity Horticulture & Nursery production. 33 years experience, self employed for 18 years.

Bay Landscapes & Garden Centre



- Topsoil
- Compost
- Potting mix
- Gravel
- Rocks
- Bark
- Fertilisers
- Pavers
- Vegetable Seedlings
- Shrubs
- Perennials
- Natives
- Fruit Trees
- So much more!
- Locally bought, grown, made, and sourced.

Open 7 Days. Courtesy trailers and deliveries available.

38 Artillery Place, Richmond

Ph: 03 5442 076

Email: office@baylandscapes.co.nz

www.baylandscapes.co.nz



A small enthusiastic & supportive group exchanging ideas

New Participants Welcome

Wakefield Village Hall



THURSDAY 9:30am -12:00

We welcome all skill levels

Bring your

Pencils, Paint & Pastels

\$4 per session includes morning tea

"A friendly community where experienced artists help creativity flourish."

Artwork on display @ The Villa Café, Wakefield

Phone/text: 0273081866 Email: aamullan@gmail.com



All Accounts Matter LTD

For all your accounting and tax needs!

If you are looking for a new Accountant, now is the perfect time! I would love to find out about your business and have a no obligation chat about how I can help you. So don't wait, call me now!

Sonia Emerson Chartered Accountant

GST | Tax Returns | Payroll | Bookkeeping | Cashflow Forecasting
Management Reporting | Rental Statements | Farm Accounts



ACCOUNTING SOFTWARE

myob

2020/2021
Certified
Consultant



M: 021 221 1009 | P: 03 541 9005 | sonia@allaccounts.co.nz
367 Wakefield-Kohatu Highway, RD1, Wakefield 7095

www.allaccounts.co.nz

Hiring Now Caltex Wakefield

Senior Forecourt Position

Permanent / full time

We are looking for a motivated, well-presented person with a positive attitude to join our team.

Responsibilities include daily sole charge open & close, cash handling, customer service, stock management, shop presentation, LPG bottle filling (Training will be given) and supervision of junior staff.

If you have retail, customer service experience, excellent numerical and computer skills and a good level of fitness then this position may suit you. Hours vary between 33.5 to 46 hours per week on a rostered basis, including every 2nd weekend and Public Holidays that fall on your rostered days. The shifts are long but offer great work life balance.

Apply with CV to:

Caltex Wakefield

Attn: Wendy

Or email admin@wasl.co.nz

Wai Iti Workshop

Advice and support for
dress/clothes making and repairs

Sewing machine tuition

"Repair Café" electrical repairs
(ideally contact 021 148 9854 beforehand)

5pm to 7pm
every 1st and 3rd Monday of a month
in the Toy Library,
61 Edward St.



The old public library building
61 Edward street

Nelson / Tasman |
Tall Poppy
 BUSINESS TEAM

REAL ESTATE MADE EASY

I'm in your community

- Fair Fees
- Free Appraisals
- Nationwide buyer match
- My Tall Poppy Dashboard

Our marketing plans:
 Free Ignite and Platinum plans

Tall Poppy has qualified buyers actively searching for the right property.
Call me, please, about your property's market potential

AMBER DIACK
 Licensed Salesperson (REAA 2008)
 021 0881 1926
 amber.diack@tallpoppy.co.nz





the**Physio**Clinic
 Wakefield

Are you looking for a local Physio?

We are in Wakefield on
 Wednesday's till 7pm
 Friday's till 3pm

To make an appointment contact
 Wakefield Medical Centre reception
 on 03 541 8911



LIFESTYLE
TRIMMING SERVICES
 HORTICULTURE · AGRICULTURE



Servicing the Top of the South
 Small to Medium
 Shelterbelts & Hedges
 Purpose Built Tractor Mounted
 Shelterbelt Trimmer

KURT - 022 599 4069
 OBLIGATION FREE QUOTE

The choice is yours



When it comes to hearing aids, one size does not fit all

Let Ed, your local, independent hearing specialist, help you find the hearing aid that's **right for you**



Call: (03) 526 8221
 Visiting Wakefield Health Centre fortnightly
 admin@edthynnehearing.co.nz
 edthynnehearing.co.nz




Higgins Heritage Park Happenings

by David Win

March has been another very busy month firstly with two successful days of Scent dogs national competitions to start it off.

Then 10 Playcentre groups from around Nelson Tasman came for a drop-in and mix and mingle while enjoying the activities like "driving" a tractor, "driving" a big truck, watching the model trains, having rides in the school bus, on the honey barrel train and on the jigger.

This was followed by the Vero International Rally 500+ vehicles having their lunch-stop at the park and checking out our museum sheds and our 1/3 scale model Burrell steam traction engine in action.

It was then straight into setting up for the Nelson Vintage Engine & Machinery Club show days with tractors to be prepared and small engines fuelled etc etc. Again, something for everyone was organised.

Being busy and active but definitely making time for a cuppa or two, and wholesome camaraderie is part of our approach for the wellbeing of our members who also have great pleasure in seeing and meeting the mix of generations enjoying the park activities and "things of the past."

One of our popular attractions is our iconic bush rail jigger which runs on 603 metres of rail around the circumference of the main park area. With thanks to drivers Vince and Ray, on event days doing up to 60 trips.

As it runs on a standard rail track gauge of 3ft 6in we are required to meet NZTA safety systems management requirements.

We also especially thank Wendy Pearson, Welcome Real Estate, for her support to our jigger operation.

Anyone wishing to support our jigger is welcome to purchase a plaque with your family name(s).

These are displayed at the station and are able to be purchased by emailing info@hgginsheritagepark.co.nz

The first rail jiggers were a lightweight, human-powered trolley, which played a crucial role in the history of New Zealand's railway maintenance.

Introduced in the late 19th and early 20th centuries, jiggers allowed railway workers, often called "gangers," to travel efficiently along railway lines to inspect tracks, perform repairs, and transport tools.

Early jiggers were powered by hand-pumping a lever, while later versions included pedal-powered or small motor-driven models.

Jiggers became iconic in rural and remote rail operations, enabling quick response to rail track issues and fostering a sense of camaraderie among crews.

Jiggers were eventually phased out as motorised maintenance vehicles took over, but they remain a nostalgic symbol of New Zealand's rail heritage.

Upcoming Park activities include:

- **5 April Army Group Centre**
re-enactment event and Steam Up open day

- **19 April museum sheds open day**

- **3 May Steam Up & museum sheds open day**
Note this is the last Steam Up for the season.

Follow us on Facebook and www.higginsheritagepark.co.nz



Piano and Keyboard Lessons

Dave Hallam PDM (UCT) South Africa

Traditional Classical Piano at Grade Level

Jazz & Contemporary Keyboard Styles

Beginners to Advanced- all ages

Mobile: 021 0319288

E-mail: davehal@extra.co.nz

Website: www.davehallam.co.nz

Teaching Studio in Wakefield Nelson



Wakefield Bowling Club

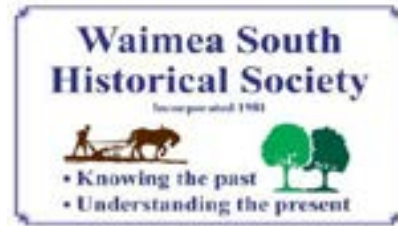
The Wakefield Auto Services Open Triples was held on 11th March.

The winning team were Mike Dickie, Chris Aldred and Carolyn Wadsworth.

Many thanks to Wakefield Auto Services for their ongoing support of Wakefield Bowling Club.



Special Anzac Meeting



Thursday April 23rd at 2pm,

in the Wakefield Public Hall. Cup of tea to follow.

Anyone is welcome. \$2 Kōha appreciated

Our Anzac Boys Remembered.

On this day we are presenting to you several short biographies of some of our soldiers who are on our memorial.

We have researched these soldiers from all different wars and hope it will provide a new understanding of what our society has lost.

They will not be Forgotten



Chair Yoga

Try Chair Yoga in Wakefield - help us spread the word!

Finding gentle, accessible exercise in a welcoming local setting isn't always easy, but that's exactly what a group of us in Wakefield set out to create. Late last year, we trialled a Chair Yoga class at Wakefield Hall to see if it might be something beneficial for the community. As it turned out, it was just what people had been looking for.

I'm Jess, a local community yoga teacher, and Chair Yoga is a passion of mine. It's a wonderful option for those with limited mobility, as classes are taught entirely seated, using a chair to work through a variety of poses and stretches that support flexibility, balance and strength.

It's perfect for those with injury or chronic pain, limitations in their mobility, or for anyone wanting a gentle place to start moving again. It's an accessible take on traditional yoga, while still honouring its roots, finding stillness in the mind and calm in the body.

The feedback from students has been fantastic, and for some, just one term made a noticeable difference to their mobility.

"Friends, this is a great workout, even though there is a chair used for support. As a disabled person, I found it a particularly good way for me to get the exercise I required, amongst friendly, local people." Anne-Marie Kidson.

We will be running Chair Yoga again in Term 2, starting on May 1st, through to 26 June (note there will be a 1-week break in the middle, 22nd May).

Price for the term: \$100, spaces will be limited for comfort.

We will also be running an all-level yoga class on Friday mornings, for anyone wanting to try yoga or build their practice, following the same dates. If you're interested in trying Chair Yoga or have any questions, I'd love to hear from you. You can reach me by email at jess.o.noone@gmail.com or by phone on 022 325 2481, and I'll get back to you as soon as I can.

Monday evening classes are also still running as usual. For all our Community Yoga Class information, check out Wakefield Community Yoga on Facebook.

Annual Dark Sky Report

by Ralph Bradley

1. The Wakefield Market Day - promotion - 2nd Jan 2025

And solar viewing was limited. But the interest in our message, to protect the night sky from light pollution, was well received and well understood. Some locals are still unaware we have a local international Dark Sky Park just 4.5 km away. Estimated interactions 100.

2. **Comet Viewing** took place Jan 20-22 Atlas G3 from princess drive look out. (25 attended)

3. **Planet Parade at Decks Reserve** on the 21 January in Motueka (200+ attendance)

4. **The Lunar eclipse of the moon** on Friday 14th March, The Nelson Astronomical Society organised two viewing locations:

- Nelson: Rutherford Park near Trafalgar Centre. (40 attended)
- Motueka: The Old Wharf/Janie Seddon

Notified by email August 14th 2025 by Anna Gerraty, Lakes-Murchison Ward Reserve Management Plan now formally includes the Wai-iti Dark Sky Park. A commitment made by TDC in 2020 is now in action thank you to TDC.

5. **DS Park Event** - We celebrated International Dark Sky Week with the opening of the season viewing for 2025 at Wai-iti International Dark Sky Park on April Saturday 26th 2025 Fog drifted in for 45m then cleared again (30-35 Attended)

6. **DS Park Star Party** - May 24th 2025 was successful and again well attended. An estimated 40 55- attended in all with some larger family groups. Cloud drifted in after 8:15 yet some stayed until we packed up.

7. **Brightwater Matariki** Monday 9th of June 2025 another successful event. Attendance 200-250. Held at Lord Ruthford park. We set up behind the buildings. Free sausages and soup for our group was a treat. The Lanterns under the cones again were successful, in identifying each scope set up. The moon meant limited viewing, but our efforts were appreciated.

8. **The June 25 Matariki event**, with the TDC planned BBQ, at Wai-iti DSP had to be cancelled due to the weather and state of emergency we were in at the time.

9. **"Scopious Arising"** A clear night for our July 26 star party, event as the name implied. The backup night- 2nd August was not needed. (Att. 40)

10. **August Saturday 23rd** was to be our "Sagittarius Rising" star party was cancelled after set up as cloud rolled in.

11. **On the 27th September Star Party** was to be our Saturn Rising event . the weather was poor and the event was cancelled.

12. **November 21st** - The Final Club Dark Sky Park night gathering at the Wai-iti Dark Sky Park took place as an end of year celebration. With a BBQ at 6:00pm, 10 club members attended. A solar scope was set up and groups of campers enjoyed solar viewing. The last group showed up at 11pm and cloud rolled in about 12pm. It was the best array of scopes binoculars and cameras we have had to date.

2026 Events to Date

1. **The Wakefield Market Day** - promotion, 2nd Jan 2026. The stall and scopes set up by 8:00am. The solar viewing was good until 11:30-12:30 with cloud rolling by with interment viewing. Bill and Joy Rea relieved me for lunch and helped me pack up at 2:30. A very productive day promoting the DSPark and dark skies in the area. Interacted with 250 folk and 130 did some viewing.

2. **Full Lunar eclipse March 3rd** A group set up in Rutherford Park Nelson, and three of us hosted a viewing at the DSP. It was a late and long night. While only 8-10 attend our viewing other groups at the Park enjoyed the hours viewing in their own groups in a dark spot. Some left after totality at 12:30, others stayed until the end at 2:30 am. It was a great clear night for the event, and spectacular watching the surroundings, from being able to read with a full moon to seeing the stars bright and clear at totality.

Special thanks to the members who regally show up with gear and allow the public viewing. Your efforts are appreciated. The Wai-iti Dark Sky Park is our special play-ground, let's keep enjoying it. The Park events are free for Nelson Astronomical Society members, Koha for public. Please feel free to attend our events and see some items of interest in the night sky.

2025: 11 events planned, 8 held and 3 cancelled due to poor weather.

Official light readings: We report to Dark Skies International yearly. Our 2022 average was 21.47, in 2023 the average had fallen again to 21.40, in 2024 it was 21.44. This year 2025 that average was 21.41. Light pollution is of a major concern. We still hope for a District plan change for Public and private lighting. The LMM rewrite has been postponed. Sean Walker is working with all parties to get Kahurangi designated a DS Sanctuary. Thanks Sean, for your awesome efforts.

Dates for Events 2026

Dark Sky Week

Dark Sky Conservation Week talk 22nd April at the Boat house. Speakers are:

- * Dr Ellen Cieraad to do a talk about her research around light pollution and dark skies
- * Ralph Bradley to talk about light pollution and the Wai-iti DS Park and demonstrate alterative lighting. Sean Walker to speak about Kahurangi.

Star Parties planed at the Park for 2026 are:

April 18th, May 11th, June 13th, July 18th, August 15th , Sept 12, Dec 12th (Club Night)
Saturday closest to the new moon where possible.

Thanks Wakefield community for your help and support.



IN THE BUSH

Reporting In From Evie South – President

Goodness me!! April looming already and from the too dry we now have some very welcome rain in the mix. It has been a good time for our volunteer team to do remedial and fix up jobs, while we can, and a very good time to keep our drainage and creek ditches clean and clear.

This is so pivotal for the health of all our Bush Reserves as keeping any water “running” back into them is a win, win for all the trees. Sadly many of our older Manuka trees have not survived this season, but on the



plus our Kowhai have been outstanding in the Reserves. Steve Hammond (our seed collector guru) has supplied, over the last 3-4 years, good size Kowhai for us, to continue planting in groups, to effectively, give a fabulous display of colour and attract more bird life.

By the by with the Societies new planned buffer planting, to be done at the Edward Baigent Memorial Scenic Reserve and after discussion with our team there last week (Muzz, Dunc & Eric) we came up with a really good placement plan. The best of all will be to plant 20 Kowhai along the new planked fence line.

All up we will be planting approx. 500 native trees, either side of the walkway track as you enter into the Reserve (i.e. inside the fence). I believe that the Reserves Department of the Council will be planting

along the paddock side of what was the previous river track area that was taken out by the flooding.

However it must be said that we are very pleased to have the opportunity to plant natives that not only will “fit” with this area, but also continue on with the **quality** planting that we have tried to maintain over the three Scenic Reserves, and also very grateful for the personal donations that have enabled us to do so.

Preparation of this site will take place in the next 2-3 weeks, with a die off of the grass and then to have the plant holes machine dug. Also for the first time and with a very kind donation from our planting co-ordinator Dorothy Hole, we will also be using a weed coir mat in conjunction with the corflute protectors and canes.

Hoping that weed suppression mats around the new plants will allow them better development, without competing with the weeds for moisture and us disturbing them to get at the weeds.

The Society will be looking at approx. mid-May for this planting.

VANDALISM

Sadly always leaves me just “guttled” the “hit” this time has been the Edward Baigent Memorial Scenic Reserve. Plants stolen, like actually dug up, protectors taken also, these trees were approx. 2 years old.

Then the toilet; smashed toilet roll holder, and the toilet vent on the roof bashed from one side and also the trellis on the northern side. The implement for the smashing was actually one of our signage posts at the entrance way to the internal bush. Fortunately “they” left it to be discovered, but the other sign was cut off at its concrete plinth. As Eric and I dug these holes and cemented them in, really a very determined person(s) to remove them. I have logged these senseless acts with our local Police and also the Reserves Department of The Tasman District Council. I have today (26.3.26) heard from the Reserves Dept, who will expedite the toilet repairs promptly. The Society will replace/repair the signage which we had paid for and installed and also replace the stolen plants.

Please for the many of you that walk our Scenic Reserves and see anything out of the ordinary, especially with folks that cannot be identified with Hi-Viz and their status printed on these or their vehicles.

Then just very carefully and only if possible note the vehicle registration plate number and inform the Police as soon as possible, even to follow up with a phone call to the Council lodging your concerns.

In all instances do keep yourselves safe **and do not approach the offenders.**



ROBSONS SCENIC RESERVE - seems to have acquired a **very welcome working Elf**, who has been diligently, doing extra track work at this Reserve.

I would love you to get in touch with me, for a quick chat on how we can assist you.

We will again head back to the Robson’s Scenic Reserve for our next maintenance day scheduled for Saturday the 11th April from 10am to Noon, food, cuppa and chat afterwards. **IF WET** then the following Saturday. If you are new to our Village and wish to join us for the day, **please just give me a call.**

JOIN OUR TEAM Any spare time?? How about joining up to our telephone tree to let you know when we are out and about maintaining our Scenic Reserves. Kind regards Evie for the Volunteer Team **Phone or Txt** 027 907 2879 Landline 03 541 8980 No message minder Or **Email** tuiville@xtra.co.nz

Waimea South Community Facility

Community Hub Update

TDC keeps us in the plan!

After careful consideration Councillors voted in March to keep the Wakefield Community Hub in the draft Annual Plan for 2026-27. The Hub's supporters are very aware of the financial challenges facing the Council and we respect the views of all Councillors as they try to balance the demands on the Council's resources.

We're pleased that most Councillors regard the Hub as a vital resource and understand that the project has wide support. Without a new Hub Wakefield faces a future with no village hall or other facility capable of serving the broad range of needs for our growing community. The draft Annual Plan opens for public consultation after 2 April. We encourage you to grab this opportunity to support the Hub by making a brief submission in its favour.



But can we afford the Hub?

Let's look at that question in two parts:

1. Can we afford to build the hub?

Yes. The Council's current Long Term Plan budgets \$11.28m for a modest, 1,300square-metre multi-purpose building, paid from three sources:

- \$6.65m from Reserve Fund Contributions. These are funds paid by property developers to Council for the exclusive purpose of funding facilities like the Hub. These funds are currently held in reserve by the Council
- \$2.53m from community fundraising
- \$2.1m from a Council loan. We reckon the Hub will make enough money to repay the loan.

2. Can we afford to run it once it's built?

Yes. Using information from community facilities locally and nationwide, and making conservative expectations, our business plan predicts the Hub will make enough money to

meet most of its operating costs with only a modest Council grant. You can see the full business plan at our website: www.waimeasouth.org.nz/about-the-project/

The Hub's income will be mainly from:

- Gym memberships. This will become a major revenue source. For example, another local community centre covers half its operating costs from gym memberships
- Hire of performance space in a multi-function room. Our Hub will be unique in Tasman District by being set up to host performing arts groups, including our own Wakefield Country Players
- Hire of sports hall
- Hire of meeting room

Can we raise \$2.5m in these tough times?

It's a big mountain to climb, but like any quest it starts with small steps. Here are a few we've taken so far:

- We have a pipeline of fundraising events organised by groups and individuals supported by the Hub steering committee, including Country Players' Haunted Hall and the wildly successful Harvest Long Lunch. Coming up are a weekend of short plays in late May, and an evening in Antarctica with Roger Lusby, both at the village hall. Watch out for bookings and promotions.
- We are talking to potential sponsors and donors, and plan a major sponsors launch event in late April
- We've been in discussion almost since the project began five years ago with major grant funders, Lottery and Rātā, and aim to have the project at a stage this year to make applications to these funds.

How can I help?

You can:

- Email, phone or talk to our local Councillors - Dean McNamara, Mike Kininmonth, Dave Woods and John Gully. Encourage them to support the project around the Council table.
- Make a brief online submission to the TDC's Annual Plan consultation. Not sure how? Phone the Council office for information: 03 543 8400
- Talk to a member of the Hub steering committee, or invite us to your next group meeting or coffee morning. Contact us via www.waimeasouth.org.nz or phone 021 047 1092.
- Make a donation. You can do this online at our website: www.waimeasouth.org.nz/donations/

What's on Top at Wakefield School

The Governor General visits Wakefield School



On 27th March, the Governor General, Her Excellency The Rt Hon Dame Cindy Kiro, visited Wakefield School. She wanted to visit the oldest school in continuous use in New Zealand.

Our school was founded by Mary Ann Baigent in mid-1843. Mary Baigent is represented in a carving on our waharoa, our traditional Māori ornamental entranceway.

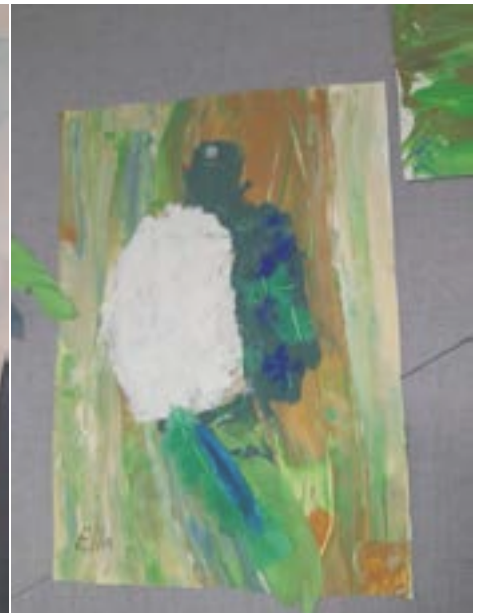
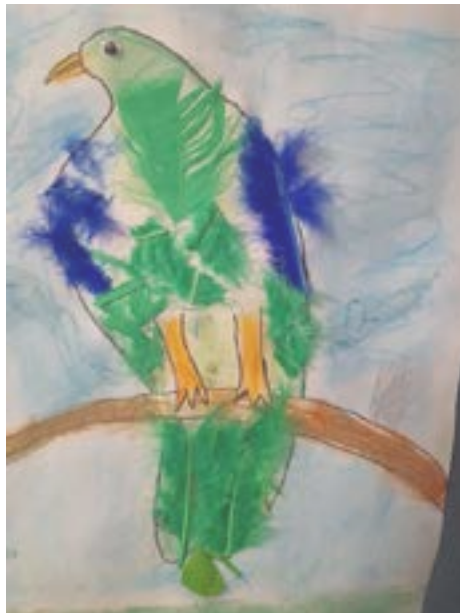
We had a mihi whakatau, a traditional Māori welcoming ceremony, to welcome the Governor General. It was raining, so we held it in the hall. We sang

our own school song as part of the mihi whakatau. Her Excellency loved our singing.

Kereru Team Art Work (Years 1 and 2)

Our two classes have been creating mixed media artwork about our namesake, the Kereru (wood pigeon). We have also learnt about this special bird that visits Faulkner Bush.

Room 12 shared writing:
All about the Kererū
Its feathers are colourful, beautiful, blue, white, purple and green.
It is 51 centimetres long.
The Kererū eats fruit and poops the seeds out, spreading them through the forest!



Waimea South Historical Society

by Yo Tye

Darryl Gallagher, the senior curator of the photography section of Nelson Provincial Museum was our guest speaker for the first meeting in 2026. It was held in the supper room of Holy Trinity Anglican Church supper room in Richmond on 26 February. Darryl accompanied his oral presentation with a power point display. He informed us that the Nelson Museum has the largest and most accessible photographic collection in New Zealand with the oldest photographs being 165 years old including two which are 'daguerrotypes', a process invented by Louis Daguerre in 1839.

Nelson's plate 'glass plate collection' consists of two different types. The first are 'collodian wet plates', invented in 1851 and the second are 'gelatin dry plates', invented in 1871. The dry plates allowed exposures to be made onto pre-prepared plates so photographers then could move away from a studio situation. Original photographic studios were located upstairs in buildings so there was better access to light. As exposures were a minute or so long, subjects had to remain still for that length of time. Printing of photos has also evolved and the early ones using albumen from egg whites mixed with salt to create a binder, which was then applied to paper, had a yellowish tinge.

The following are some of the collections:

- The Tyree collection began in 1880 comprising 90,000 glass plate negatives and 11,000 others. The index boxes often only have a surname and occasionally an initial, making precise identification difficult.
- W.E. Brown collection complete with a catalogue.
- F.M. Jones collection of 5,000 negatives. Fred supplied local newspapers with photographs and also made them into postcards.
- Reg Kingsford collection of 200,000 glass plate negatives.
- Ellis Dudgeon collection. Ellis was well known for his colourisation of prints.
- Geoffrey C Wood collection of 246,000 negatives, mainly of those supplied to the Nelson Mail. There are proof sheets, glass plate negatives and 35mm films.
- The Nelson Mail collection. This is mainly from 1979-2000 and comprises 35mm film and proof sheets up until 1982.
- Many collections of amateur photographers such as Percy Baigent from Wakefield, as well as a collection of colour slides from the 1950's to the 1980's.

Darryl then proceeded to demonstrate how to access the collections online and provided a 'take home' page of the Boolean Search Terms which are used in this process. Photos can be ordered by filling out an online order form. Darryl explained how the collections will be difficult to access until the new facilities are completed in Richmond West off McShane's Road. Building will begin on 1 April 2026 as the current facilities at Isele House will be closed.

Darryl emphasised the importance of naming and dating all photographs by laying the photographs on a hard surface and using a soft pencil to record the information on the back of each photograph. This presentation was appreciated by everyone in the audience and we hope it enables more people to utilise the extensive collection of our local history in photographic form.



Wakefield Playcentre

by Amy Devlin

The mornings are cooler, and the dew is beginning to settle on the grass. Our tamariki are always out there making the most of their environment and the magical space we have at Playcentre. It is heartwarming to see our older tamariki moving through their learning journeys and heading off to school. Lots of through the fence conversations between those who have gone on to Wakefield School and those at playcentre. It is great to see their connections continue to develop.

We had a very fun messy play week, where a change of clothes was well needed each day. What a way to develop our children's curiosity.

We are open Monday to Friday 9am – 12noon with Tuesdays and Thursdays open until 1pm
All welcome.



Live Well Stay Well

by Sonja Lamers

Live Well Stay Well group visited the garden of Yvonne Moore in Richmond and the sensory garden nearby on 24 March 2026.

Observations of attendants were:

Yvonne has achieved so much in only 9 months, her garden looks lush and full of lots of colour.

Even the garden shed looks attractive, with a mirror on the outside that looks like a window, but cleverly reflects the shrub in front of it. A great idea.

The sensory garden was very nice and great to know where to get fresh herbs for neighbours.

We identified a pretty and unusual plant – Chinese indigo or Summer Wisteria.

Comments ranged from delightful garden to lovely garden and house. Loved the colourful flowers.

Yvonne surely has green hands.

Great to see that you can make the garden your own in a short period of time. Got some great ideas for my own garden.

Thanks Yvonne for showing us around.



Hair Raisers
Magic Can Happen
Ph 541 8312

Dry Hire Spits, Meat Supplies and Catering



Smoke'n And Spits

027 299 0342
www.smokenandspits.com

Community Yoga

Monday Evening Flow

Wakefield School Hall
All levels, gentle flow yoga class
Casual, \$15 per class, BYO mat
6.30pm - 7.30pm

Friday Morning Flow

Wakefield Village Hall, Supper Room
All levels, gentle flow yoga class
\$100 for Term Two, BYO mat
9.30am - 10.30am

Chair Mobility Yoga

Wakefield Village Hall,
Supper Room

\$100 for Term Two
Friday mornings
10.45 - 11.30am

Contact Jess 0223252481



HIDDEN HEART OF JAPAN

Join us on this 14 day fully-inclusive group tour
from 27 March to 9 April 2027

\$13,480 per person, twin share
(includes economy class airfares ex Auckland)



CALL 021 545 799

EMAIL sue@nelsontravelbroker.co.nz



Hosted by Sue Ketel



Nelson Travel Broker
your journey starts here

Have an idea for an article or something you have written that you would like to submit?

Email us at [windowonwakefield@gmail.com](mailto>windowonwakefield@gmail.com)

***Arborist work**
***Tree felling**
***Hedge trimming**
***Tree stump removal**
***Wood chipping**
***Planting and re vegetation projects**
***And much more green care of your property**

This is done by a trained arborist and nurseryman with many years of experience in plant production and the landscape business

Full insurance cover while all work is being done
contact MORTEN for a free quote
Ph: 021 206 9914 or 541 86 85
email: mortenlausen@gmail.com
www.nelsonlandscaping.co.nz
www.facebook.com/supergreencare/

Pets Ever After

After Death Pet Care

Cremations

Memorials

Urns

Poster & Canvas Prints

Phone 027 247 8883

Locally owned and operated



www.petcremations.co.nz

Wakefield Village Kindy

by *Maretta Burbidge*

We continue to provide incredible experiences and learning for the tamariki at Wakefield Village Kindergarten. A recent bus trip to Nelson City proved to be both memorable and inspiring, especially through the eyes of our four-year-olds.

Our visit began at the Cathedral gardens, where the children were captivated by the trees and the cicadas. Finding cicada skins—and even live cicadas—sparked excited conversations about life cycles and the natural world.

The true highlight, however, was our time at the Nelson Museum. There, we explored Te Ao Kanapa: The Wonder of Light, Colour and Pattern—a vibrant and immersive exhibition where science, art, and play come together in the most magical way.

From the moment we entered, the tamariki were engaged. Light bent and shifted before their eyes, patterns pulsed across the walls, and each corner revealed a new surprise. The children delighted in creating stories using silhouettes and shadow puppets they had made, letting their imaginations run wild.

An experience that sparked awe in both children and adults alike. The kaleidoscope space invited us to step inside a world of reflections and refractions, where every surface seemed alive and ever-changing. The reflection room was another favourite, filling the space with laughter as we watched ourselves multiply in unexpected ways.

More than just an exhibition, Te Ao Kanapa encouraged us all to touch, move, and experiment.

It opened up a playful understanding of how light and colour shape the way we see the world.

A joyful day for all, and a reminder that meaningful learning happens best through exploration, curiosity, and shared experiences.



Live Well Stay Well

by Sonja Lamers

Upcoming meetings:

Tuesday 7 April 2026: coffee meeting at The Villa in Wakefield, 9.45am onwards

Tuesday 21 April 2026: Rym Lamrani, Community Partnerships Lead Wakefield School and Board member Multicultural Nelson Tasman, venue Wakefield Fire Brigade, 9.45am-11am.

Tuesday 12 May 2026: coffee meeting at The Villa in Wakefield, 9.45 am onwards

Live Well Stay Well is a local health and social group that meets twice a month in Wakefield. Our goal is to keep well and healthy, by encouraging good health practices and exercise, but also by having a positive social connection with others in our community.

Maybe you are new to the area, or feeling a little isolated, and would like to meet and get to know others who live locally, within a friendly environment. Or would you like to learn more about our community? Then our group could be for you.

Our group meets twice a month in Wakefield, mostly on a Tuesday morning from 9.45am to 11am.

Live Well, Stay Well

Tuesday 7 April and 12 May 2026 coffee and a chat at Café The Villa, Wakefield at 9.45am

Tuesday 21 April 2026 9.45am–11am

Speaker

Rym Lamrani

Community Partnerships Lead Wakefield School and Board member Multicultural Nelson Tasman

**Venue: Wakefield Fire Brigade,
Pigeon Valley Road, Wakefield.**

**For information contact Sandra 027 6099202,
Sonja 027 3740500 or Christine 027 677 0080**

One Tuesday we will meet in a local cafe for a coffee and chat, and the other Tuesday we have a guest speaker focussing on health knowledge or who can help us understand and learn more about our community. This could also be a visit to a local business of interest. We aim to arrange a varied and interesting programme.

The group is run on an informal basis and there is no joining fee. However when we have a guest speaker or go out for a visit we do ask for a \$2 gold coin donation to help us cover the hire of the hall facilities and tea and coffee and/or a small gift for our speaker.

We advertise our programme in "Window on Wakefield", your local news magazine, plus on the Community noticeboard in Wakefield.

We also communicate what is happening each month by an email group. You are very welcome to join us. We would love to meet you!

If you would like to be on email list, please contact one of the convenors:

Sandra 027 609 9202, Sonja 027 374 0500, Christine 027 677 0080

**Can we celebrate your special event or help
remember someone dear to you?**

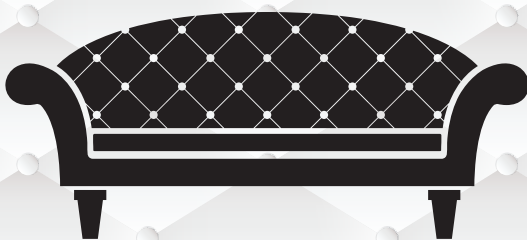
**Please send your obituaries, birth announcements,
wedding stories, other important notices to us**

at

windowonwakefield@gmail.com

or phone 021 221 1009

VILLA UPHOLSTERY



Craig 022 351 5989 Cherie 022 352 5991

**CUSTOM DESIGN & BUILD CHAIRS, SOFAS, OTTOMANS
RECOVERY & REPAIR**



f facebook.com/littlesprigwakefield
i instagram.com/littlesprigwakefield
@ sprigandfem.co.nz/wakefield
✉ wakefield@littlesprig.co.nz
☎ 03 922 9910

OPEN TUESDAY - SUNDAY

6 EDWARD STREET, WAKEFIELD

Wellbeing Workshop at Wakefield Health Centre

Getting Your Spark Back

Feeling a bit flat, stuck, or overwhelmed? You're not alone.

Join Dr Wayne Hurlow and Nicole Willcox (Health Improvement Practitioner) for this FREE one-hour wellbeing workshop.

We will explore how things like social media, busy minds, and everyday pressures impact how we feel — and share simple, realistic ways to improve energy, motivation, and overall wellbeing.

No pressure, no judgement — just practical ideas you can use in real life.



 **Thursday 30th April**

 **5:30pm (approx. 1 hour)**

 **Wakefield Health Centre**

Open to all patients enrolled with Wakefield Health Centre.

Ask at reception or speak with your GP or nurse to register.

+
WAKEFIELD PHARMACY
the caring pharmacy

FAST EFFECTIVE
24 hour relief for Hayfever
& Itchy Skin
+ NASAL DECONGESTANT



Levrix

Shop hours -
Monday 8.30am to 5.30pm - Tuesday 8.30am to 5.30pm - Wednesday 8.30am to 6pm
Thursday 8.30am to 5.30pm - Friday 8.30am to 5.30pm - Saturday 10am to 12pm
4 Edward Street, Wakefield - Phone 03 541 8418 - Fax 03 541 9100
www.wakefieldpharmacy.co.nz



Wakefield Plumbing

Wakefield Plumbing & Gas Fitting
With over 30 years' experience.

For all your Plumbing & Gas Fitting needs
including repairs & maintenance.

Califont & water cylinder installs & replacement.

Ph Les 0220787322
www.wakefieldplumbing.co.nz

Wakefield Health Centre

Flu Vaccinations and Covid Boosters

by Gavin Drummond

The colder mornings are a reminder that winter is on its way and with it comes the Flu Season. Your best defence against the flu is to get a yearly flu vaccine. Flu vaccines are available for anyone aged over six months.

The nurses will have several clinics coming up so give us a call and we can book you in.

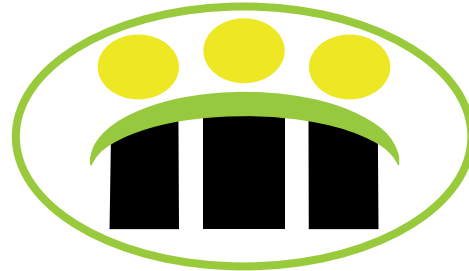
People with the following conditions are eligible for a free vaccine:

1. Children aged 6 months to 12 years with chronic conditions
2. Children 4 years and under who have been hospitalised for respiratory illness or have a history of significant respiratory illness
3. People 65 years of age or older
4. Māori & Pacific peoples aged 55-64
5. Refugee who have been through the quota programme 55yrs +
6. People under 65 years of age who:
 - have some types of cardiovascular disease;
 - have either of the following chronic respiratory diseases:
 - o asthma, if on a regular preventative therapy, or
 - o other chronic respiratory disease with impaired lung function; or
 - have diabetes; or
 - have chronic renal disease; or
 - have any cancer, excluding basal and squamous skin cancers if not invasive; or
 - pregnant women (any trimester); or
 - some other rare conditions may also be eligible

If you think you may be eligible, please discuss with one of our Nurses or Doctors.

Non funded flu vaccines will be available at the same time. FLUAD@Quad is a non-funded flu vaccine available to the over 65's. This vaccine has additional ingredients that helps create a stronger immune response and costs \$50.

There is a new Covid vaccine available for people over 30 yrs that have not had a booster or covid illness for six months or more. This can also be used as a primary course for people who have never had a covid vaccine. Flu and covid vaccines can be safely given at the same time.



Wakefield Health Centre

Surgery hours:

Monday to Friday 8.30am – 5:30pm

Wednesday 8.30am – 7pm

Phone 541 8911

12 Edward St Wakefield





"...for all creatures great & small..."

HOURS:

Monday 8.30 – 5.00 with Brenda consulting all day
Tuesday 8.30 – 5.00 with Brenda - morning consults only
Wednesday 8.30 – 12 Nurse only
Thursday 8.30 – 5.00 with Paula – morning consults only
Friday 8.30 – 12.00 Nurse only

Ph 541 8974

info@tcvet.co.nz * www.tcvet.co.nz
Edward Street, Wakefield

Head office 35 McGlashen Avenue, Richmond



544 1200 24 hours

Shone & Shirley
FUNERAL DIRECTORS
EST 1862
FAMILY OWNED & OPERATED



Goodbyes are different for everyone
Waimea Menzshed built our trailer hearse from recycled rimu. This can be towed by any vehicle with a towbar. One of the many options which can make a final farewell unique.

Our family caring for your family

03 546 5700 - 24 hours

shoneandshirley.co.nz

Wakefield
ELECTRICAL LTD

We Do All Electrical Work (incl. Caravans WoEFs)

Andrew Smith - Electrician/Inspector

Est. 2013

03 541 8797 - 027 441 8797

"Your Local Electrician"



Tasman Bay Chiropractic

Open six days 64 Oxford St, Richmond

Referrals, families and
all new patients welcome



Visit our website or call us **03 544 4554**
tasmanbaychiropractic.co.nz Find us on

Keeping you in the game since 2002

FENCE WORX

FOXHILL

- Rural and Residential Fencing • Decks •
- Sheds • Pergolas • Retaining Walls •

Call or email today for a free quote

021 193 6331

info@fenceworxfoxhill.com

www.fenceworxfoxhill.com



Nelson Travel Broker

your journey starts here

Locally Owned & Operated in Wakefield

Sue Ketel - Travel Broker

Phone: 021 545 799

Email: sue@nelsontravelbroker.co.nz

Check out what my clients have to say at
www.nelsontravelbroker.co.nz

A proud member of Travel Connections NZ Limited.



Community Classifieds

FOR SALE

F & P wash smart auto washer top load
5.5kg.
Immaculate cond \$325.
Ph 021862276

NEW GROUP FORMING

E Bike or Biking group
meeting at the
4 Square supermarket
on the first Thursday of the month
starting in May
leaving at 10.00 am.

if any one is keen to join us and
bike to the Cafe in Brightwater and back.

Contact Tom Champoin
021 1550 665

WAKEFIELD ANGLICAN PARISH

COMMUNITY LUNCHES

These are held at the Anglican Worship Centre
on 3rd Thursday of the month
and everyone is most welcome to attend.

A donation to assist with purchasing the food would be appreciated.
If attending, and it's possible, please call Liz Massey
by the Monday 021 1850 168.

April 16th
May 21st
June 18th
July 16th
August 20th
September 17th
October 15th
November 19th



Wakefield Community Toy Library

WAKEFIELD TOY LIBRARY

We want to remind everyone that we are always interested to hear about what
toys you think we should add to our collection.

You can share your ideas by emailing us on wakefieldtoylibrary@gmail.com
or pop in and see us during our opening hours,
Saturday 10:00am-11:00am and Mondays 3:15pm-4:30pm

The Wakefield Community Toy Library is for everyone!



Wakefield Craft Group

Come and join the ladies Craft Group
held on Wednesday mornings
in the Fire Brigade Supper Room
Pigeon Valley Road
9.00am - 12pm

Bring any project - sewing, knitting, crochet.
Learn to knit or crochet or just come for a look
and join us for tea, coffee and company.
Small donation

For more information phone Judy on 5418342

MEALS ON WHEELS - VOLUNTEER DRIVERS NEEDED

Meals on Wheels are delivered from the Wakefield Homestead rest home
to people in the Belgrove to Brightwater area

Monday to Friday (excluding Public Holidays) by a team of volunteers.

This service enables elderly and unwell people
to remain in their own homes longer.

We currently have a vacancy for a volunteer delivery driver
on alternate Mondays starting on December 15th.
Each delivery duty takes 1.5 to 2 hours.

We also need a pool of relief delivery drivers
to do occasional fill in on a casual basis.

If you are interested in helping your community in this way,
please phone or text Ian Nicholas (roster organiser) on 027 766 6937
or email on iannicholas.hr@gmail.com

Spring Grove Church of Christ Main Rd Spring Grove



Worship and Communion Sundays 10am
You are welcome to attend.

"Christ bore our sin"
Isiah ch 53 vs 12 N.I.V

"For he bore the sin of many and made
intercession for the transgressors! "

Community Directory

Rutherford Memorial Hall
658 Wakefield-Kohatu Highway, Foxhill
Sue White 027 474 6324
www.lordrutherfordhall.org.nz

Higgins Heritage Park & Community Fair
info@higginsheritagepark.co.nz

Post Memory NZ
Sarah Arnold 072 341 7820
postmemorynz@gmail.com

Spring Grove Drill Hall
C Stratford 021 0268 5176

Totaradale Golf Club
Catherine or Ali 541 8030
totaradalegc@gmail.com

Wakefield Anglican Church
St Johns on the hill
Traditional Service: 9.00am
1st Sunday of each month

The Worship Centre
Service: 10.30am every Sunday
Food & Faith: 5.00pm every 2nd & 4th Sunday
Ph 541 8883 wakefieldanglican@xtra.co.nz

St Johns Worship Centre
Bookings Nigel Massey 027 243 1207

Wai Iti Workshop:
5pm - 7pm, 1st and 3rd Monday of month
@ Toy Library, 61 Edward St
waiitiworkshop@gmail.com 021 757 753
For electrical repair inquiries
please text 021 148 9854

Wakefield Football Club
wakefieldfootballclub@gmail.com
www.wakefieldfc.nz

Wakefield Health Centre
541 8911

Wakefield Pharmacy
541 8418

Wakefield Playcentre
541 7097
Mon & Wed 9:30am - 12noon
Tue, Thurs & Fri 9am - 1pm
wakefield@playcentre.org.nz

Wakefield Volunteer Fire Brigade
CFO Wattie Mortimer 022 492 8841
DCFO Alana Shields 027 309 2953

Willowbank Heritage Village
willowbank2002@gmail.com

Country Players (Drama)
Jen Amosa 541 8139
enquiries@countryplayers.org.nz
www.countryplayers.wordpress.com

Nelson Vintage Engine &
Machinery Club
Allan 027 319 7427

Faulkner Bush Kindergarten
24 Treeton Place
029 040 10518

Rural Women
Diane Higgins 03 542 4388

St Joseph's Catholic Church
Mass - 5pm 2nd Saturday of each month
027 337 4622
office.admin@parish.org.nz

Waimea Sheepdog Trial Club
Sally Powell 021 773 461
Email: sally@tcvet.co.nz

Waimea Area Quilters
Kay Norgate 021 0811 4860
Marilyn Gibbs 03 541 8435
marilyncolingibbs@gmail.com

Wakefield Book Group
Mahala White - 541 8933 or
Chrissy Harris - 541 9596

Wakefield Bush Restoration Soc Inc
Evie South 541 8980 or 027 907 2879

Plunket Nelson Area Office
For appointments etc 539 5200

Target Shooting Wakefield
targetshootingwakefield@gmail.com
Holly Gibbons 022 406 1674

Wanderers Sports Club
027 714 6160
jimmy@wandererssports.co.nz

Wakefield Toy Library
Saturday 9.30-11.30am
wakefieldtoylibrary@gmail.com

Wakefield Art Group
Thursdays 9.30am - 12pm
Alison 541 8822

Wakefield Website
www.wakefield.org.nz

Marlborough Nelson Marine
Radio Assn
Adrian Mullan 021 118 4832
www.mmr.org.nz

NZ Postcard Society Inc
Evie South 541 8980 or 027 907 2879

Spring Grove Church of Christ
Meet Sundays 10am
info.springgrovechurch@gmail.com

Waimea South Historical Society
Yvonne Tye 021 542 338

Wakefield Bowling Club
Phone club rooms on 541 8556
(Please leave message if
answerphone comes on).
www.wakefieldbowls.co.nz

Wakefield Brightwater Book Club
Sue McAuley 027 343 2410
vsmcauley@gmail.com
Meets last Tues of every month

Wakefield Community Council
Nathan Dunn 0210 869 0807
wcc.chairperson@gmail.com

Wakefield Village Kindergarten
20 Whitby Way
Phone 021 0227 1762
or 03 5418086

Wakefield School PTC
ptawakefield@gmail.com

Wakefield School/ Community
Swimming Pool
C/- Wakefield School

Wakefield Tennis Club
Ngairie Calder 027 279 9938
www.caldertennis.co.nz

Wakefield Village Hall
Sarah Ching 03 541 9046
ambynz@hotmail.com

Window on Wakefield
Articles & Content
Sonia Emerson 021 221 1009

Window on Wakefield
Advertising - 027 306 4237
Genie & Lindsay Bradley

Wakefield School
Edward Street - 541 8332

Justice of the Peace
Katie Greer - Ph 021 547 756

AED DEFIBRILLATOR LOCATIONS - AVAILABLE 24/7

Wakefield Four Square, Wakefield Bowling Club, Wakefield Football Club, Highfield Farm, Kohatu Flat Rock Cafe, Old Tadmor Store, Dovedale Hall, 29 Moonlight Road Glenhope, Corner of Totara View Road and Kilkenny Place, Corner of Martin Ave and Lord Auckland Road, Southfuels Spring Grove, Belgrove Cafe and Bar [what was], Lake Rotoiti Fire Station, Golden Downs Golf Club, Totaradale Golf Club.

CIVIL DEFENCE - WAKEFIELD AREA COMMUNITY RESPONSE

In the event of an emergency, your first task is to ensure the safety of your own home, family and neighbours. Once you have attended to this, if you have specialised skills/ equipment, and/or feel you can assist others; or require assistance yourself, please make your way to the Welfare Centre which will be at the St Johns Worship Centre in Edward Street [unless notified otherwise].

Please note that the existence of a Welfare Centre does not absolve each individual from their responsibility to be personally prepared. You should ensure that you have your own survival kit in place, and that you are able to be fully self sufficient for at least three days.

In the event of an emergency, for urgent public messages, tune in to:
More FM 94.1, Classic Hits 89.8, Fresh FM 95.4



SOLD

RECENTLY
IN WAKEFIELD & BRIGHTWATER



9 Hunt Terrace



18 Hunt Terrace



147 Whitby Road



5 Stagg Place



38 Hollybush Drive



195 Whitby Road

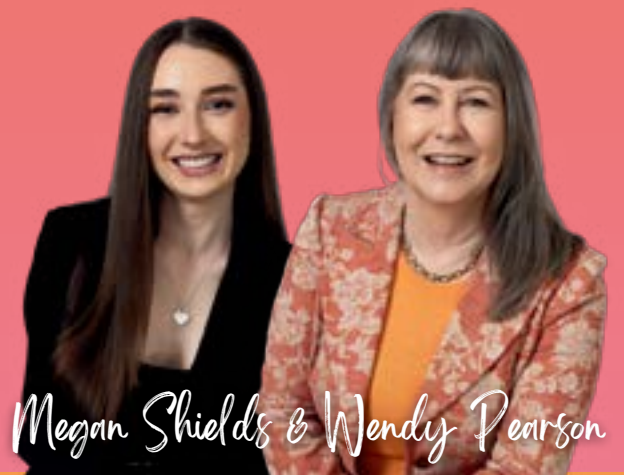
It's not a straight forward market, but Wakefield houses are selling. Please give me a call for an honest, no pressure market assessment of your property.

Wendy
021 567 722



elcome

wendy@welcomerealestate.co.nz



Megan Shields & Wendy Pearson

PROUDLY SUPPORTING:

Wakefield Community
Toy Library



Totaradale
GOLF CLUB INC



Powered by Ownly Ltd, Licenced REAA 2008