



window on wakefield

Your Local News

Community News for the Wakefield Area

Wakefield School Gala 2025

by Charlotte Thynne

Wakefield School Gala 2025, **what a sensational time with a profit of \$32,251** it was quite simply a triumph of community! The gala is driven by the parent and teacher community (PTC) of Wakefield school (which consists of every parent/caregiver with an enrolled child at the school as well as the teachers and support staff), but is dependent on a much much wider network for its success. Incredible sponsorship and donations from businesses, the sharing of expertise and skilled labour by the kindest of talented people, and the wider community in general stepping up to be at the gates, cook sausages or to just come spend money and have a good time connecting with neighbours and strangers alike, everyone really does play their part.



This year the food returned to the shaded area alongside the field at the suggestion of a visionary mum who has only been a parent at Wakefield school for one year.

This parent stepping up to "lead the food" was actually the deciding moment that the gala was going to go ahead.

With the flooding events over the mid year, the question had been asked as to whether parents and the surrounding community had the bandwidth to make a gala happen and without someone to lead the food, a major area, the gala this year quite simply would not have been.

Tanya, stepping up despite feeling "new" is testament to the fact that the moment you step foot into Wakefield School you are part of the Whanau, and valued as a contributing member of the school community (and also testament to her can do attitude and organisation!).

Other parents', "new" to the school who really gave it their all and deserve huge thanks were Amy who got on the phones and secured sponsorship deals (so that our costs remained low) and Elise who had chillers, contacts, ice cream scoops, you name it, Elise can help. So thanks to these "new" parents for getting involved and bringing a fresh perspective and enthusiasm to the gala :-)

The other incredibly special triumph of the gala this year was the return of the petting zoo, run by Fleur and Brad and their two girls. This area absolutely enchanted humans of all ages and for a gold coin donation entry it really was the bargain of the gala. This area takes a huge amount of work and care and we are so lucky that a local school family has both a wide array of pets and a can-do-get-into-it attitude, happy to share the joy with everyone :-)

...contd on P3



WINDOW ON WAKEFIELD

How it works...

Window on Wakefield is produced and published by Waimea South Community Facility Charitable Trust. All businesses advertising in this publication incur a cost for the advertising space allocated, depending on the size and location of the advertisement. The funds raised from this advertising are used to cover the costs of printing Window on Wakefield. No parties are paid for the time involved with editing, coordinating and publishing this paper. It is the intention that if surplus funds are raised from advertising, that these will be held to be used for other community projects. The bank reconciliations and financial reports related to this account will be made available to any person who wishes to view them.

Content...

Window on Wakefield is a community newspaper, and as such, we look forward to having articles and content contributed by our community. If you wish to submit a one off article, or suggest some regular content, please make contact with Sonia on 541 9005 or email windowonwakefield@gmail.com and read the Terms and Conditions below.

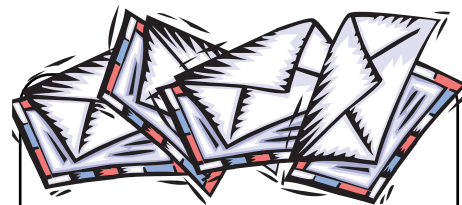
We try to ensure information published is truthful and accurate, but do not check the facts of the articles and therefore cannot attest to their validity. While all reasonable care is exercised, we do not accept liability for any loss whatsoever incurred through our errors, acts or omissions in relation to the content of an article, or for any consequences of readers relying on the information published. Opinions expressed by contributors do not necessarily represent the views of the Waimea South Community Facility Charitable Trust, nor are they necessarily endorsed by the Editor or Publisher.

Advertising...

If your business wishes to advertise in Window on Wakefield, please make contact with Genie on 027 306 4237 or email info@promoteyou.co.nz and a rate card will be sent.

TERMS AND CONDITIONS REGARDING PUBLISHING OF CONTENT

- a. All articles and other content submitted for publishing must disclose the author's name or where the article/content is contributed by a community group, then that community group's name.
- b. All images should be provided to us in a high quality PDF format. We take no responsibility for the quality of reproduction for images that are not supplied to us in this format.
- c. If you wish to make changes to an article or content already submitted, please ensure these are communicated to us before the relevant deadline date.
- d. When you submit an article or other content for publishing you:
 - agree that the submitted material and/or images can be reproduced by the Editor or Publisher at any time without your prior approval
 - agree that all photographs submitted for publishing are provided free of charge, and the approval to print has been obtained from any persons shown in the photo - this is the responsibility of the person submitting the photo
 - acknowledge that all material is held by us at your risk and is not insured by us. Material will only be returned on request and may otherwise be destroyed by us
 - warrant and undertake that no statement, image, representation or information contained in your supplied article or content:
 - * is or is likely to be misleading or deceptive;
 - * is at all defamatory, in breach of copyright, trademark or other intellectual or industrial property right;
 - * is otherwise in breach of the Copyright Act 1994, Defamation Act 1992, or any provision of any Statute, Regulation or rule of law.
- e. We reserve the right to decline the publication of any article or any content whatsoever on any grounds that we in our absolute discretion see fit.



Jill O'Brien

R D 1 Wakefield
Rural Mail Contractor
**FOR ALL YOUR
MAIL NEEDS**

Stamps, Parcels, Freight
Phone 541 8963
Mobile 027 324 2126

**DID YOUR BUSINESS
MISS OUT THIS TIME**



**DON'T DESPAIR
WE HAVE SAVED
A SPOT FOR THE NEXT
PUBLICATION
JUST FOR YOUR BUSINESS**

Give us a call
027 306 4237
or
Email
info@promoteyou.co.nz

NEXT EDITION

We do our best to have it out the first full week of each month
All Advertising to be submitted by the 20th of the Month prior
All Content to be submitted by the **23rd** of the Month prior
For Advertising please contact Promote You 027 306 4237

For Content please contact All Accounts Matter Ltd 541 9005 or 03 541 9055 if calling from a cellphone



Wakefield School Gala [Contd...]

The Gala is the main fundraiser for Wakefield School and provides much needed funding for crucial support and projects that fall outside of government funding. This year the gala fund will be split between teacher aide support inside class rooms and a property project around our sandpit and picnic area. Both these projects will allow Wakefield School to continue to provide a rich school experience for all our tamariki.

The impressive amount raised by our gala is thanks to those that attended and the volunteer hours put in as well as the incredibly generous support of our sponsors - 3 Bee, Manuka Honey & Natural Skincare, Abel Tasman Centre, Advance Cleaning, All About You, All Accounts Matter, Appleby Fresh, Appletons, Aquaflow, Armageddon Paintball/Redstone Golf, Armstrong Tasman Bay, Azwood, Bay Landscapes and Garden Centre, Big Barrel, Big Plant Depot, Bluebridge Cook Straight Ferry, Blooming Good Gardens, Brightwater Storage, Brookside Nursery, Brown and Associates, Bruce Puklowski, Bunnings Nursery, Calder Tennis Training, Cam and Emma Wilson, Cancer Society Nelson Tasman, Chethams & Co Drainlaying, CLM Richmond, Colonial Landscapes, Complete Kitchens, Connings, Dave MacKenzie, Deans Nursery, Dougs Motocycle Workshop, Ed Thynne Hearing, Enhance with Plants, Ewing Poultry, Fairfield Berries, Farmlands, Fence-Worx, Fleur Creedmore, Flower Farm, Fraemohs Homes Tasman, Franks Trees, Freeman Roofing, GC Builders, Goldpine Industries, Greenwaste to Zero, Guytons, Havendale Logging, Heatherdale Orchards, Hoddys Orchard, Hill Top Native Nursery, ITM, Jacks Tyres, JAE Tasman, James Cambridge Law, Kiwi Journeys (Mapua Ferry), J S Ewers Produce, La Niche Hair, Lions Foundation, Little Sprig Wakefield, Loggers Shop Brightwater, Lowes Orchard Fruit 4U, Mainly Natives, Make a Knife, Mitre 10 Mega Plant department, Mountain Valley Honey, My Place, MTF Vehicle Finance, Nelmac, Nikau Gardens, Nurture at Home, Onus Construction Management, Paper Plus, Pat Cahill, Penny Lane Plants, Petmart, PGG Wrightson, PJZ House of Fades, Pip and Richard de Hamel, Place for Plants, Placemakers (Saxton Road), Plant and Share, Potton & Burton Publishing, Programmed Property Maintenance, PYO @ 185 Hope, Quail Valley Eggs, Quinneys Bush, Ravensdown Fertiliser, Repco, River Terrace Nurseries, Rowan Dron Electrical, Sanitarium Weet-bix Kids TRYathlon, Sealord Group, Seifried Estate, Sexy Beasts, Stihl Shop Richmond, Stoke Garden Landscapes, Stoph Riedel, Tasman Bay Chiropractic, Tasman Honda, Tasman Pine Forests, The Apple Shed Cafe and Bar, The Butcherette, The Copier Company, The Villa, The Wakefield Hotel, Thirkettle Nurseries, Titoki Nursery, UDC Finance, Veronica Miller, Vibrant Earth, Wai-iti Estate Apiary, Waimea Nurseries, Wakefield 4Square, Wakefield Auto Services, Wakefield Bakery, Wakefield Community Council, Wakefield Community Swimming Pool, Wakefield Health Centre, Wakefield Playcentre, Wakefield Quarry, Wakefield Community Toy Library, Wanderers Rugby Club, Wendy Pearson - Welcome Real Estate, Will Prouting, William Waldron, Willow Bank Heritage Village, Wilsons Able Tasman, Woolworths Richmond, Young Swimmers, Xscape Space, Zealandia. Thank you to our sponsors, we know that you are weighing up a lot when we approach you for sponsorship and we so appreciate what you do for our school.

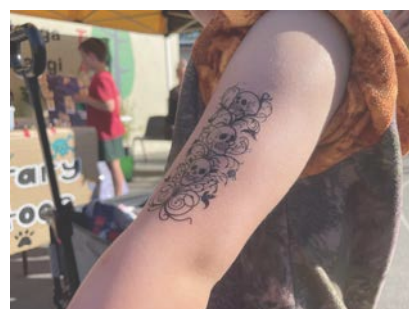
From the mouths of babes:

"the gala just has a really good feel to it"

"I liked the chocolate wheel, even though I didn't do it I really liked seeing who would win"

He aha te mea nui o te ao? He tangata! He tangata! He tangata!

What is the most important thing in all the world? It is people! It is people! It is people!



8 & Under Dance Class

Get your little one moving early!



6 week
Ballroom & Latin
course, for
children 8 &
under

Contact Hazel
to register:
022 351 2849



Town and Country Vet

by Brenda Halliwell, Vet

Getting pet-prepared for summer!

Yippee, summer is here! Here are some things to think about for our pets to avoid any unexpected complications and enjoy the summer:

- If you are going away, are your pets' vaccinations up to date? Vaccinations for respiratory viruses in cats and for dogs Parvovirus plus Canine Cough must be up to date in order to stay in boarding facilities. Call us for advice if you're not sure and don't leave it until the last minute!
- If you are going away leave contact numbers for your vet as well as your mobile phone number with your pet carer. Have a chat so it's clear what your expectations are for your pet if something goes wrong, especially if you are not able to be contacted. Phone us if you would like to add any details to your client record. If you are taking your pet with you, remember all their bits and pieces including any medication.
- Most of us know that chocolate is poisonous for dogs. If your dog eats chocolate, phone us promptly for advice. Toxicity depends on the size of the dog and the amount and type of chocolate eaten so your dog might be ok but it's better to act at the time than have a very sick dog later. Remember dogs are very good at finding the wrapped chocolate under the tree!
- Beware of novel objects which could be swallowed by your pets such as Christmas tinsel, strings from the roast, kebab sticks from the barbecue, fish hooks/fishing line (+/- fish) and potentially obstructive food such as chop bones, corn cobs and peach stones.
- Take care giving your dog leftovers from the BBQ or roast – bones, large amounts of fat and onions can all cause serious internal problems for dogs.
- Grapes, raisins and sultanas can be poisonous for dogs so no Christmas cake either!
- Another food-related hazard is old food that your pet might find in compost heaps, rubbish bins and out on walks. There are millions of weird microbes growing in these places that if eaten by your pet (especially dogs) can cause all sorts of symptoms from tummy upsets through to poisoning and seizures.
- Toxic algae are a warm weather hazard in our rivers. It's safest to avoid the rivers in summer and head to the beach instead.
- Heatstroke is common over summer especially in short-nosed dogs. NEVER leave dogs in the car on a hot day, even in the shade with windows down. Offer frequent drinks/stops on journeys. Restrict exercise to cooler parts of the day. Limit the length of walks especially for young energetic dogs, old dogs and dogs with medical problems. Provide shade for dog kennels and rabbit/guinea pig hutches.



"...for all creatures great & small..."

HOURS:

Monday 8.30 – 5.00 with Brenda consulting all day

Tuesday 8.30 – 5.00 with Brenda - morning consults only

Wednesday 8.30 – 12 Nurse only

Thursday 8.30 – 5.00 with Paula – morning consults only

Friday 8.30 – 12.00 Nurse only

Ph 541 8974

info@tcvet.co.nz * www.tcvet.co.nz

Edward Street, Wakefield

Head office 35 McGlashen Avenue, Richmond



544 1200 24 hours

• Clipping long haired pets can prevent problems such as overheating, soiling, skin infections and grass seed problems. We often clip the underside/belly of long-haired cats, and advise clipping under ears, around the feet and between the toes of long-haired dogs. Some long-haired dogs that aren't traditionally clipped (eg Border Collies) are much more comfortable and active, even if they do look a bit odd!

• Check your dog's paws, ears, 'ampits' and groin daily for grass seeds. This is particularly important for fluffy dogs especially spaniels, poodles and all their crosses. It may seem a hassle to do this but it can be an expensive, time-consuming and painful process to find grass seeds once they penetrate through the skin and are inside your dog!

• Warm weather accelerates development of flea eggs and larvae so flea prevention is important. We have many products available to suit your pets and their lifestyle. Some products now last six months or more so it's easy to keep your pet and house flea-free.

**MERRY CHRISTMAS AND
A HAPPY NEW YEAR
FROM ALL OF US AT
TOWN AND COUNTRY
VET**





LANDSCAPE ROCK
& GRAVEL

WE CAN DELIVER TO YOU

Drainage metal | Hard fill
Basecourse | Topcourse
Landscape rock | Lime

566 CHURCH VALLEY RD, WAKEFIELD
Ph: 541 9093 wakefieldquarry.co.nz



Wakefield Quarry
Getting it right on the ground.

**FIX UP
SET UP
BACK UP
CLEAN UP
TABLETS &
COMPUTERS**

**mobile
computing**

In Nelson
since
1997

**548 1787
027 224 0955**

Fran's the Man!
fran@mobilecomputing.co.nz

**Still no call-out fee &
we still come to you.**

mtf 

Your local money experts

NELSON

Saskia is local to the Wakefield region. With a deep understanding of the local area and a commitment to personalized service, Saskia is here to help you navigate your financial journey.

Get in
touch
today.



027 819 3167
saskia.roeske@mtf.co.nz
175 Haven Road
mtf.co.nz/nelson

Responsible lending criteria and checks,
terms and conditions apply. See mtf.co.nz/terms



PROPERTY MAINTENANCE



Enviro Horticulture
Grafting & Property Maintenance

Services include:

Old man's beard & passionfruit control
Re vegetation projects • Planting and plant advice
Professional grafting • Specialist fruit tree pruning
Scrub cutting • Expert weed control
Lawn mowing • Soft landscaping

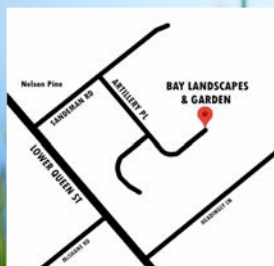


Phone Rob Ketel
021 294 2788

35 Pigeon Valley South Branch Rd,
RD2, Wakefield 7096

National certificates in Amenity Horticulture
& Nursery production. 33 years experience,
self employed for 18 years.

Bay Landscapes & Garden Centre



- Topsoil
- Compost
- Potting mix
- Gravel
- Rocks
- Bark
- Fertilisers
- Pavers
- Vegetable Seedlings
- Shrubs
- Perennials
- Natives
- Fruit Trees
- So much more!
- Locally bought, grown, made, and sourced.

Open 7 Days. Courtesy trailers and deliveries available.

38 Artillery Place, Richmond

Ph: 03 5442 076

Email: office@baylandscapes.co.nz

www.baylandscapes.co.nz

Higgins Heritage Park Happenings

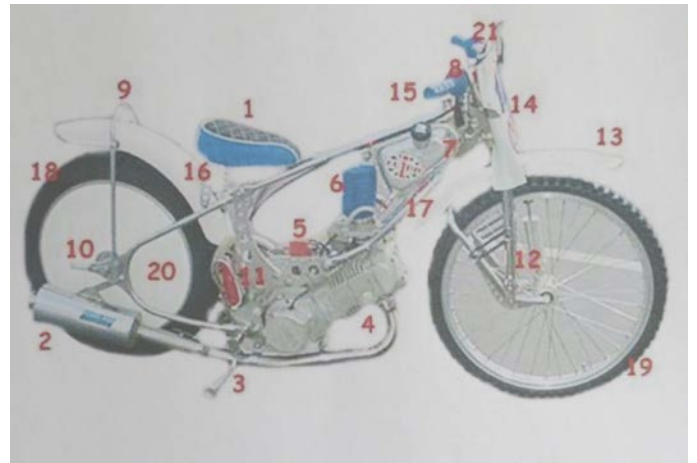
by David Win

The year is fast disappearing! We have had a lot happening at the park recently including visits from Tapawera Kindy, Richmond Cubs, the Nelson Vintage & Machinery Club 50 years celebration, along with our Historic Transport, Vintage Machinery & Pigeon Valley Steam weekly members' working bee days, and also Xmas functions @ the Park. Our Steam-UP and Craft Fair preparations for Sunday 4 January are well underway with a neat variety of new stalls (including food) along with your longtime favourites. Check them out on our Facebook page! And we look forward to seeing you on the 4th.

To our Park Volunteers, our great Park Supporters, the Wakefield and wider Tasman Community Services, Police, Fire and Ambulance personnel, a big thanks for your efforts throughout 2025. We wish you all a blessed and joyful Christmas and a safe and Happy New Year.

PART TWO – "Speedway bikes have no brakes, just one gear, a clutch and full noise" the continuation from last month's article of the Speedway Bike components:

10. Rear wheel adjustment: For adjustment of the slide and traction while racing, 2 adjustment nuts are attached to the centre wheel bolt.
11. Clutch adjustment: Correct adjustment is crucial for getting an optimum start.
12. Leading link front forks: Modern day bikes have adjustable front forks and shock absorbers.
13. Front Mudguard: Plastic or fibreglass with a simple 2 bolts for a quick change if damaged.
14. Front handle-bar cover: Covers handlebar and frame and some protection to the riders hands from air-borne dirt.
15. Throttle: A spring-loaded cable linked to the carburettor. Shutting the throttle down during a slide can seriously hurt the rider!
16. Seat brackets: Correct seat height is critical for safety.
17. Fuel Taps: The tank has 2 outlets with on/off taps that release a flood of fuel to the hungry carb. The 2nd tap is opened immediately prior to the race start.
18. Rear wheels: Are the drive and control of the bike. The tyre is screwed to the rim to stop it moving.
19. Front wheel: Is held in place by one long through bolt and spokes are finely tuned to keep the wheels straight & aligned.
20. Rear wheel spoiler: It produces "down-force" as the bike is thrown sideways.
21. Clutch lever: Is on the left-hand side of the handlebars and is fully adjustable.



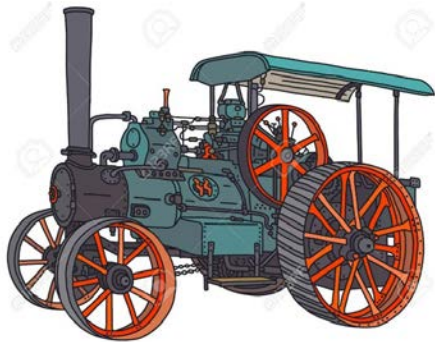
Dates to remember:

Sunday 7 December – Steam Up & museum sheds open, coffee cart, Mountain Valley Honey barrel and jigger rides

Sunday 21 December – museum sheds open day

Sunday 4 January – Craft Fair & Steam Up –
craftfair@higginsheritagepark.co.nz

Follow us on Facebook. www.higginsheritagepark.co.nz



Piano and Keyboard Lessons

Dave Hallam PDM (UCT) South Africa

Traditional Classical Piano at Grade Level

Jazz & Contemporary Keyboard Styles

Beginners to Advanced- all ages

Mobile: 021 0319288

E-mail: davehal@xtra.co.nz

Website: www.davehallam.co.nz

Teaching Studio in Wakefield Nelson





"...for all creatures great & small..."

HOURS:

Monday 8.30 – 5.00 with Brenda consulting all day

Tuesday 8.30 – 5.00 with Brenda - morning consults only

Wednesday 8.30 – 12 Nurse only

Thursday 8.30 – 5.00 with Paula – morning consults only

Friday 8.30 – 12.00 Nurse only

Ph 541 8974

info@tcvet.co.nz * www.tcvet.co.nz

Edward Street, Wakefield

Head office 35 McGlashen Avenue, Richmond



544 1200 24 hours

Shone & Shirley FUNERAL DIRECTORS

EST 1862

FAMILY OWNED & OPERATED



Goodbyes are different for everyone

Waimea Menzshed built our trailer hearse from recycled rimu. This can be towed by any vehicle with a towbar. One of the many options which can make a final farewell unique.

Our family caring for your family

03 546 5700 - 24 hours

shoneandshirley.co.nz

Wakefield ELECTRICAL LTD

We Do All Electrical Work (incl. Caravans WoEFs)

Andrew Smith - Electrician/Inspector

— Est. 2013 —

03 541 8797 - 027 441 8797

"Your Local Electrician"



Tasman Bay Chiropractic

Open six days 64 Oxford St, Richmond

Referrals, families and
all new patients welcome



Visit our website or call us **03 544 4554**
tasmanbaychiropractic.co.nz Find us on

Keeping you in the game since 2002

FENCE WORX

FOX HILL

- Rural and Residential Fencing • Decks •
- Sheds • Pergolas • Retaining Walls •

Call or email today for a free quote

021 193 6331

info@fenceworxfoxhill.com

www.fenceworxfoxhill.com



Nelson Travel Broker
your journey starts here

*locally Owned
& Operated*

Phone: 03 541 8417 or 021 545 799
Email: sue@nelsontravelbroker.co.nz

Check out what my clients have to say at
www.nelsontravelbroker.co.nz

A proud member of Travel Connections NZ Limited.



Live Well, Stay Well

It only seems a very short time ago in February this year, that Christine, Sonja and I got together to plan the programme for the year for Live Well Stay Well. And now here we are fast approaching the end of 2025.

Live Well continued in the same format this year, with two get togethers a month, the first for a coffee catch up early in the month, usually at the Villa who always makes us so welcome. And later in the month for either a visit to a local place of interest or a meeting at the Fire Station premises with a guest speaker. We are very fortunate, and very grateful to the Wakefield Volunteer Fire Services for letting us use their supper room for our meetings. It is a well set up facility which suits our group well.

This year our guest speakers have given us interesting presentations on a variety of topics, including keeping us informed about scams, the alpine fault, the textile rescue collective, tramping in the back country and 'the three steps for life' from St Johns.

We have also made visits to a beautiful old home and garden up Eighty Eight Valley Rd, and the historic Top House near St Arnaud.

Both outings well attended by our members, with car-pooling from the village to make it possible for everyone who wished to go.

During the year some members of the group have moved on, but we have welcomed new members, so our group continues to have a healthy membership.

Our final outing for the year will be to Mapua early in December, for morning tea together followed by a look around the area.

Our group will begin meeting again in March next year and we look forward to seeing everyone then to join us for another interesting and varied Live Well Stay Well programme.

(We always welcome any ideas for visits or speakers!).

We thank you all for your support, and wish you a very happy Christmas and all the best for 2026.

Kind regards

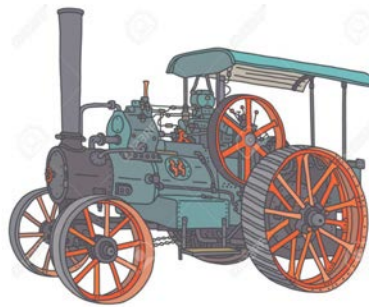
Sandra, Christine and Sonja

HIGGINS HERITAGE PARK

CRAFT FAIR & STEAM UP

SUNDAY 4TH JANUARY 2026

9AM – 3PM



All the fun of the fair, craft stalls, food & drinks, sausage sizzle, coffee cart, Ice-creams, face painting, balloon twisties,

Honey barrel rides, bush rail jigger rides, model trains, old school bus rides, museum shed displays open

222 PIGEON VALLEY ROAD, WAKEFIELD

E: craftfair@higginsheritagepark.co.nz FB: [higginspark](https://www.facebook.com/higginspark)

Kindly Supported By



Dry Hire Spits, Meat Supplies and Catering



027 299 0342
www.smokenandspits.com



HARVEST LONG LUNCH

PREPARED BY
LEADING CHEF

Volker Marecek



3PM SUNDAY 29 MARCH 2026 | WAKEFIELD SCHOOL

Join us in the heart of Wakefield Village for a long-table luncheon celebrating the Nelson-Tasman harvest, and the people who bring it to life.

Set beneath the autumn sky and prepared by a leading chef using the finest local produce from our regional artisan growers, this shared feast will be a tribute to the land, the season, and the flavours that define our region - rustic yet refined, honest yet elegant.

Enjoy an afternoon of delicious food, live music, and good company - all in support of a cause that matters. Every ticket sold contributes directly to the Wakefield Community Hub fundraising effort, supporting a space for connection, learning, and community growth.

LOCAL WINE, BEER, AND NON-ALCOHOLIC BEVERAGES AVAILABLE FOR PURCHASE ON THE DAY.

Price from \$99pp

Various ticket options available.

TICKETS INCLUDE

A full harvest-inspired lunch prepared by local chefs and a welcome drink.

R18

Seats limited - Book now!



JOIN THE HARVESTTABLE

Fundraiser for Wakefield Community Hub

In The Bush

In The Bush

Reporting in From Evie South – President



OUR CHRISTMAS PARTY GET TOGETHER THE EDWARD BAIGENT MEMORIAL SCENIC RESERVE SATURDAY 13TH DECEMBER

From 10am to 11am light maintenance THEN party time in appreciation for all the efforts of our many volunteers, which I think many would admit, has weather wise been a most difficult year.

WE also do take a break from our maintenance days in January and then recommence fully charged in February 2026.

However, some “dedicated” volunteers, will be doing walk arounds and small maintenance jobs when and where we see them.

If you have any concerns/issues over this holiday period do also feel free to also telephone the Tasman District Council offices, who do have a telephone answering system in place, OR if more urgent dial 111 for the emergency services that may be required.

Remember if you do see wilful damage in any of our Scenic Reserves, primarily do keep yourself safe, if a registration plate number of vehicles(s) could be obtained then this can be extremely helpful, for any further inquiries.

BUT fingers crossed that most folks will just enjoy their idyllic surroundings, with family and friends, which is what our incredible Scenic Reserves, open spaces are all about.

SPECIAL THANKS

To many in our community that assist us, WE so appreciate, not only the monetary donations, but your input and appreciation of our Society and our aims.

***We are simply Guardians -
Protectors, Custodians for our
“local” Scenic Reserves.***

On behalf of myself, our Volunteers and supporting members of our Society, enjoy a well-deserved Christmas Season and our very Best Wishes for a fabulous New Year 2026.



JOIN OUR TEAM – NEW YEAR RESOLUTION ?? any spare time?? How about joining up to our telephone tree to let you know when we are out and about maintaining our Scenic Reserves.

Kind regards, Evie for the Volunteer Team Phone or txt 027 907 2879 Landline 03 541 8980

no message minder or **Email** tuiville@xtra.co.nz

Wakefield School

Athletics Day

On Thursday, November 6, Year 3 and 4 students from Brightwater School joined Wakefield School for an Athletics day. Children from both schools enjoyed sprints, relays, high jump, long jump, throwing activities and making new friends.

Here are some comments from the Tūi team about the day:

The relay races were lots of fun because we got to pass the batons on. Sometimes it was easy to drop them - **Xanthe**

I loved the hurdles because we got to jump over hurdles and do an obstacle course. The obstacle course had a tunnel, balance beams and some tyres - **Sadie**

The long jump was amazing. It was hard to do because you had to jump off a board at a perfect time. I think I went pretty well - **William**

I found the high jump tricky because you had to do a scissors jump and it was easy to knock over - **Asher**

I loved the sprints because I am fast. I won a few times even against Year 4s from Brightwater - **Angus**

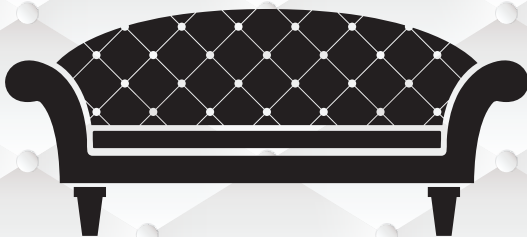
I liked eating food with the children from Brightwater School. It was good to have Brightwater here, and see friends that I know from motorbiking and rugby - **Bodhi**

I made new friends from Brightwater School when we walked around with our groups - **Millen**

For the throwing activities one person had to hold up a hoop and we had to throw a bean bag to go through the hoop and land in a circle on the ground. It was easy for me - **Kade**



VILLA UPHOLSTERY



Craig 022 351 5989 Cherie 022 352 5991

CUSTOM DESIGN & BUILD CHAIRS, SOFAS, OTTOMANS
RECOVERY & REPAIR



facebook.com/littlesprigwakefield
instagram.com/littlesprigwakefield
sprigandfern.co.nz/wakefield
wakefield@littlesprig.co.nz
03 922 9910

OPEN TUESDAY - SUNDAY

6 EDWARD STREET, WAKEFIELD

Wakefields Harvest Long Lunch

Wakefield's First Harvest Long Lunch Set to Bring Community Together

This autumn, Wakefield will come together for something truly special. Our village is set to host the inaugural Wakefield Harvest Long Lunch at Wakefield School at 3pm on Sunday 29 March 2026. The communal long-table lunch will bring neighbours, friends and visitors together to celebrate the Nelson Tasman harvest, all while raising funds for the Wakefield Community Hub project.

Featuring a shared table set up, live music, and a relaxed afternoon atmosphere, this is the first event of its kind in Wakefield, and the team of local organisers say they're excited to see the community come together around great food and a good cause.

The menu will be prepared by two highly esteemed New Zealand chefs, Volker Marecek (formerly Executive Chef at Cordis Auckland) and Des Harris (formerly of Clooney), supported by a passionate team of local volunteers. Together, they will showcase the very best of seasonal, locally grown produce, creating a harvest-inspired feast to remember.

Guests will be welcomed with a drink on arrival, with additional local wine, beer, and non-alcoholic beverages available to purchase. Organisers say they are hugely appreciative of the early supporters who have already backed the event and the Wakefield Community Hub fundraising effort. Their generosity has helped get this first-time event off the ground, and the organisers hope it will inspire many more locals to attend, donate, or help to spread the word.

Tickets are from \$99 and include a harvest inspired lunch and welcome drink. With all proceeds going directly to the Wakefield Community Hub, organisers encourage residents to book early and be part of an afternoon that celebrates local food, local people, and the future of Wakefield.

The link for ticket purchases will be shared on the Our Place, Wakefield Community Hub Facebook page and on the Wakefield Community Hub website:
<https://www.waimeasouth.org.nz>

For any questions, email harvestlonglunch@gmail.com



LIFESTYLE TRIMMING SERVICES
HORTICULTURE • AGRICULTURE

Servicing the Top of the South
Small to Medium
Shelterbelts & Hedges
Purpose Built Tractor Mounted
Shelterbelt Trimmer

 **KURT - 022 599 4069**
OBLIGATION FREE QUOTE



Our Place
Wakefield Community Hub
he whenua ātaahua

Brings you another FUNdraising event
Long table feast, harvest style, showcasing local food.

Save the date!

29th March 2026

Craig Smart CONTRACTING LTD DIGGERS & TRUCK WORK

- Landscaping - Topsoil Screening
- Root Raking - Site Clearing
- Driveways - Gravel Supplies
- Trenching - Posthole Boring

541 9626 or 0274 440 441
craigandcath@xtra.co.nz



Sticks 'n' Stones
TREE CARE & LANDSCAPE SERVICES

- *Arborist work
- *Tree felling
- *Hedge trimming
- *Tree stump removal
- *Wood chipping
- *Planting and re vegetation projects
- *And much more green care of your property

This is done by a trained arborist and nurseryman with many years of experience in plant production and the landscape business

Full insurance cover while all work is being done

contact MORTEN for a free quote
Ph: 021 206 9914 or 541 86 85
email: mortenlausen@gmail.com
www.nelsonlandscaping.co.nz
www.facebook.com/supergreencare/

Waimea South Historical Society

Pulse from the Past

by Yo Tye

On Thursday 30th October about 35 people gathered on the village green to participate in the historic walk around Wakefield that revealed the history about the medical, midwifery, nursing and other health services from the 1850's to 1999. A large photographic display was set up in the long room beside the Villa which showed most of the buildings and Doctors that were spoken about.

Margaret Clark outlined the development of midwifery from largely untrained midwives to them required to be registered post 1907 after the passing of the Midwives Registration Act. This was followed by the Social Security Act in the 1930's which ensured mothers and babies had free maternity care which led to most nursing homes closing down with most babies then being born in hospitals instead. The Plunket Society was established in 1913 which provided home visits for mothers and babies. Wakefield had its purpose built Plunket Rooms opened in 1955 which were built as a War Memorial. The War Memorial statue was relocated beside it in 1994. Bill Hall opened his chemist shop in 1951 and this was purchased by Brian Gibb in 1981. The chemist and the Doctors worked together as a team.

At 6 Clifford Road the history of Felbridge Hospital was explained. The house began as a home for James & Sarah Hooper from Hooper's Store. Dr Hugh Pearless purchased it in 1925 and established it as a Hospital where small operations were performed and where women could give birth. It was purchased by Dr Alex Caselberg in 1926 and when he left for Australia in 1927 it was purchased by Dr James Closs in 1928 who ran it with the help of Sister McMoreland until 1931.

The next stop was at Painton House where Maurice Wratt, a grandson of early settlers William and Ellen Painton, ran a Chiropractic business from 1945 to 1965. Opposite Wakefield School had been Mena House, a private hospital and nursing home run by Sister Nellie Lines. However this burnt down in 1926. It was re-established in Whitby Road with a different name. Dr Walter Relf Pearless had his home and surgery at Felbridge House on Pitfure Road. When he retired he swapped houses with his son Walter Hugh Pearless who lived in Brightwater. Other Doctors were also able to use this surgery after Hugh moved to Golden Bay to take up farming.

13 Arrow St was the home and surgery of Dr Curt Sally Meyer. He arrived during WWII having escaped persecution in his home country of Germany because he was Jewish. The home was originally built for Ernest and Alice Hodgson to retire into in front of the original 'Ellerslie Cottage' built in the 1870's for Alice's grandparents James and Mary Wallace. This older cottage served as Dr Meyer's surgery.

Stopping at 76 Whitby we heard how this home was initially thought to be Oranga Nursing Home. However this turned out to be behind Wakefield Service Station and across what were once the railway lines. It was run by Leila Russ, known as Lily after her husband Charles had died in 1901 leaving her with eight children and no means of support. Her daughter Martha was able to assist her. Lily died in 1917 and the Oranga Nursing Home was run for another two years by Nurse Edith Webster before being purchased by Lily's son Stanley and his wife Alice nee Wadsworth.

Dr Ted Bassett had his house and surgery further along Whitby Road. He was a Wakefield GP for 38 years from 1857 until 1995. He also served on the Nelson Hospital Board for 15 years and received an OBE for his services. He is known as the father of Abbeyfield retirement homes in New Zealand.

74 Whitby road was where Nurse Nellie Lines (now Everett having married Herbert Everett) started up her new Nursing Home called Bethesda. The house had originally been built in 1908 for Carl Telenius from Spring Grove and run as a shop by his second wife Elizabeth. In 1953 Dr John Davis purchased the property then demolished the old two storied building and erected another house with a surgery in front in 1964.

In 1988 Dr Peter McKenzie purchased the house opposite at 77 Whitby Road. As Dr Davis had retired, he was able to use the surgery across the road until the Wakefield Health Centre was opened in 1990. Aliwai Nursing Home was further along at 169 Whitby Rd. It was run by Nurse Susannah Franklin, a midwife from Karamea, who had married Harold Franklin, the son of Major William Norris Franklyn from 145 Whitby Road. Willow Bank Nursing Home was in the house situated to the south of the bowling club in another old Hooper Home. Alice Mockett took in expectant mothers from outlying areas into her cottage at 46 Whitby Way.

Other nursing homes in the district outside of Wakefield village were Whitefriars and White Pine at Wai-iti run by Violet Wadsworth and her mother Alice Watson and Cleveland Nursing Home also at Wai-iti run by Elizabeth Watson, daughter-in-law of Alice Watson. Dr James Hudson set up a practice in Tapawera in 1907 which was of great assistance to the Wakefield doctors as he could service all the outlying districts. Unfortunately he was killed in a car accident on Spooner's Range in 1912.

The Wakefield Rest Home was established in 1995. It is now called Wakefield Homestead and is run by Hilary and Margaret Bird.

In 1990 the Wakefield Medical Centre was opened and the Wakefield Doctors and supporting services such as practice nurses, Plunket and Public Health all operated from this one base.

This very interesting and fact filled walking tour was concluded at the Villa where the photographic display was enjoyed by many before sitting down to a delicious lunch.



WAKEFIELD PHARMACY

the caring pharmacy

FAST EFFECTIVE
24 hour relief for Hayfever
& Itchy Skin
+ NASAL DECONGESTANT



TAPS PP2809

Levrix

Shop hours -

Monday 8.30am to 5.30pm - Tuesday 8.30am to 5.30pm - Wednesday 8.30am to 6pm
 Thursday 8.30am to 5.30pm - Friday 8.30am to 5.30pm - Saturday 10am to 12pm

4 Edward Street, Wakefield - Phone 03 541 8418 - Fax 03 541 9100

www.wakefieldpharmacy.co.nz

Pets Ever After

After Death Pet Care

Cremations

Memorials

Urns

Poster & Canvas Prints

Phone 027 247 8883

Locally owned and operated



www.petcremations.co.nz



SIX SIGNS OF BAD WHEEL ALIGNMENT



Vehicle pulling to the left or right



Vibration in the steering wheel



Uneven or rapid tyre wear



Steering wheel is crooked



Poor fuel economy



Unusual tyre noise when travelling



BENEFITS OF REGULAR WHEEL ALIGNMENTS



Increased fuel efficiency



Smoother driving



Improved vehicle safety



Extended tyre life



Reduced need for repairs

Has it been a while since your last alignment?

Give us a call and we'll make sure you're good to go.

STARTING FROM ONLY \$85



Wakefield Auto Services Ltd

67 Whitby Road, Wakefield 7025
 Phone 541 8121 www.wasl.co.nz



ENJOY THE JOURNEY  **CALTEX**

Wakefield Health Centre

CHRISTMAS AND NEW YEAR

As in previous years we will only be closed for the statutory holidays. During the short week between Christmas and the New Year we will be running a skeleton staff at reduced hours and will only be accepting urgent appointments on the day.

Repeat Prescriptions – Christmas and New Year

With Christmas approaching, it is a good time to double check you have your long-term medications ordered in good time. Give us a call or order through MyIndici.

Health Improvement Practitioner

✨ **FREE HOLIDAY HEALTH SUPPORT** ✨

Feeling overwhelmed this Christmas?

You're not alone — the holiday season can be stressful, exhausting, and emotionally draining.

🎄 **FREE CONSULTATIONS AVAILABLE** 🎄

Our Health Improvement Practitioner offers supportive, confidential sessions to help you:

- Manage stress and overwhelm
- Improve sleep and energy
- Build healthy routines (without perfection!)
- Navigate holiday pressures
- Feel grounded and in control

○ Short, practical sessions focusing on what you need *right now*

🌱 No judgment — just support and tools that work!

Book at reception. On the day appointments may also be available.

Take care of yourself this season — you deserve it.

Your wellbeing matters.

A note of thanks

Thanks to all who have responded with feedback in our prediabetes survey and our feedback form at the Tapawera Spring Show. It is really helpful in planning our services and making sure we are meeting health needs in the community best we can. For those who have requested support through those surveys we will be in touch shortly. Ngā mihi nui, Dr Kim Hurlow



The team here at Wakefield Health Centre wish you a healthy

and peaceful Christmas and New Year.



space at Playcentre

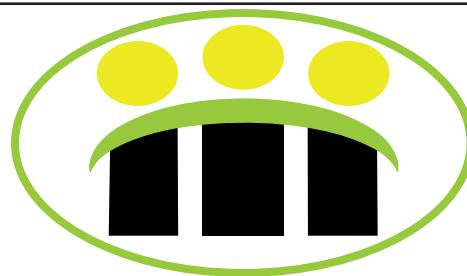
Learn, play and grow with your baby

Space for you and your baby is facilitated by Playcentres across Aotearoa. You'll meet weekly to explore parenting topics and your baby's development. Discussion topics include sleep, attachment, movement, brain development. Also opportunities to enjoy music, books and play experiences with your baby, while getting to know other new families in your local community.

Space at Wakefield Playcentre
Wednesdays from 12.30-3pm
For babies born from October 2025
Contact Fiona on ph: 027 808 6797

Enrol now at playcentre.org.nz/space

"Whānau tohu ngāfahi - families growing together" Playcentre



Wakefield Health Centre
Surgery hours:

Monday to Friday 8.30am – 5:30pm
Wednesday 8.30am – 7pm

Phone 541 8911
12 Edward St Wakefield

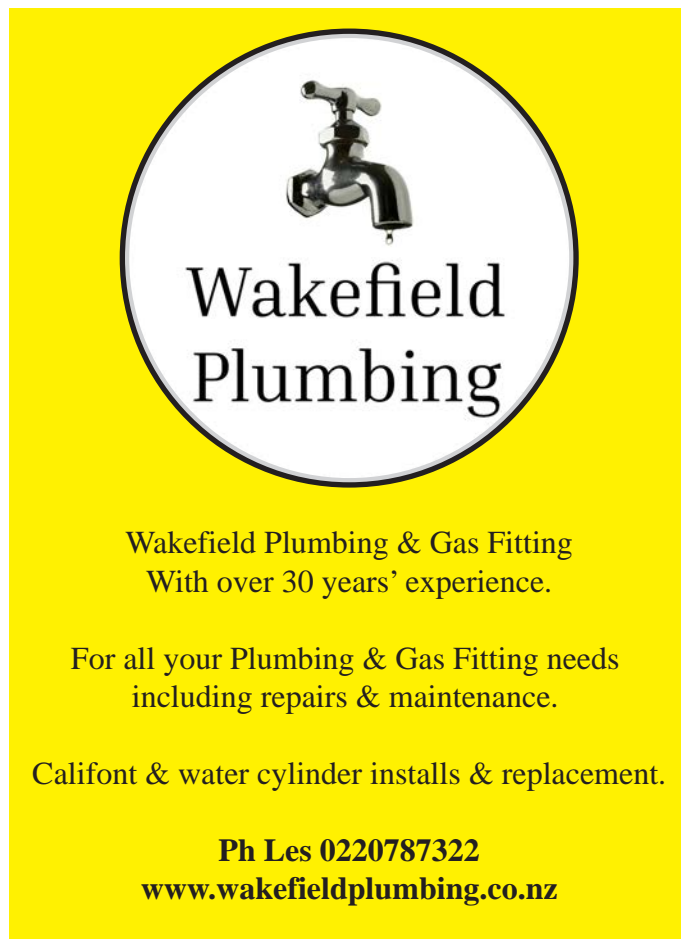



Redstone
GOLF PARK

**Golf
Disc Golf
Paintball
Licensed Cafe**

Family Fun for All
Redstone Golf Park & Armageddon Paintball
334 Wai-iti Valley Rd, Wakefield

f Tel: 03 541 8452 / 027 448 9367 **ig**
redstonegolfpark.co.nz / armageddonpaintball.nz




**Wakefield
Plumbing**

Wakefield Plumbing & Gas Fitting
With over 30 years' experience.

For all your Plumbing & Gas Fitting needs
including repairs & maintenance.

Califont & water cylinder installs & replacement.

Ph Les 0220787322
www.wakefieldplumbing.co.nz



The choice is yours



**When it comes to hearing aids,
one size does not fit all**

Let Ed, your local, independent hearing specialist,
help you find the hearing aid that's **right for you**



 **Call: (03) 526 8221**
Visiting Wakefield Health Centre fortnightly
admin@edthynnehearing.co.nz
edthynnehearing.co.nz

 **ED THYNNE
hearing**

Your Flood Stories

As part of the recovery after the floods we are keen to collect your thoughts and experiences about the events of June/July 2025. We have created a short questionnaire, click on the Flood Stories link below.

The questionnaire gives you the opportunity to reflect not only on your own circumstances, but those of your wider area, networks, communities of concern, social groups, workplaces, schools and so on.

The responses to the questionnaire will be collated into a book, which will be a tangible reminder of how the wider community came through one of the biggest weather events in 150 years.

Your answers can be as brief as you like, or longer if you have more to say. I hope you will take a few minutes to complete the questionnaire. If you prefer pen and paper you can ask at your local library for a printed copy.

<https://www.tasman.govt.nz/my-region/flood-recovery/share-your-storm-stories>, or go to the Focus Wakefield page and click on the link in the article, or use the QR code below.

And a little more story-telling...

As we move into the last days of spring, we have been told by a few people that they would like to write down their own story of the floods, maybe for themselves, or for their children and grandchildren, or to add to the historic record.

We know there are many stories to be told, some small snippets, some longer and more involved – all important. But how to start? The blank sheet of paper, the blank screen, can be pretty intimidating.

Come along to Motueka Library on Friday November 28th from 10am-12pm for a chat about stories, have a cuppa and biscuits with Janine (Motueka Librarian) and Katie (Flood Navigator), and get some tips to help get you started with your writing.

You can bring a laptop or tablet, or pen and paper, and begin your story writing in the session if you feel like it. If you prefer to just chat and pick up ideas, that is fine too. It will be a calm, safe, and friendly space and everyone is welcome.

Do you have photographs to share?

I will have more information about where and how to send any photographs you may wish to share in a couple of weeks' time.

Ka kite koutou, keep well everyone.

Katie Sellars
Flood Navigator

Manaaki whenua, Manaaki tangata, haere whakamua
Care for the land, care for people, go forward.



Cafe Conversation

by Petros

Two peckachinos?

Over here, Ducky, thanks.

Blackbird was at the Birds and Bees Café, meeting up for a coffee with an old pheasant colleague. He pushed past a table of young bumbles, sipping their fluffys, and greeted his friend.

Hi there. Say, you've kept your bright colours! I'm half grey feathers these days.

Good to see you, replied Pheasant. How's retirement going? What are you doing with yourself?

I'm writing stories.

You? You're kidding me, chortled Pheasant.

No I really am, Blackbird insisted. It's a selection of chatterings and goings-on among the humans in the village. Lots of nonsense, of course, but sometimes interesting and informative things come up. It's something to do.

Yes, there's not much on TV nowadays, Pheasant observed, and lots of it's without captions.

Without what?...oh, captions. Yes, and they don't make sense half the time.

Well, they agreed, wiping their beaks, we old fellas do need to keep our brains alive somehow, don't we?

Nothing wrong with our brains, chipped in a couple of cockroaches (who certainly shouldn't have been on the premises.) We've been around for a long time and plan to stay alive for a good while yet.

Stayin' alive, yes - isn't there a song about that somewhere? wondered Pheasant.

Any number of songs, agreed Blackbird. We're singing them all the time.

Community Classifieds



Spring Grove Church of Christ
Main Rd Spring Grove
Worship and Communion Sundays 10am
You are welcome to attend.

"Gods Gift is Eternal Life"
Romans Ch 3 vs 23 NIV

"But the gift of God is eternal Life in
Christ Jesus our Lord."



**Wakefield Community
Toy Library**

WAKEFIELD TOY LIBRARY

We want to remind everyone that we are always interested to hear about what toys you think we should add to our collection.

You can share your ideas by emailing us on
wakefieldtoylibrary@gmail.com
or pop in and see us during our opening hours,
Saturday 10:00am-11:00am and Mondays 3:15pm-4:30pm

The Wakefield Community Toy Library
is for everyone!



Wakefield Craft Group

**Come and join the ladies Craft Group
held on Wednesday mornings
in the Fire Brigade Supper Room
Pigeon Valley Road
9.00am - 12pm**

**Bring any project - sewing, knitting, crochet.
Learn to knit or crochet or just come for a look
and join us for tea, coffee and company.
Small donation**

For more information phone Judy on 5418342



Wakefield Art Group Est 2012

Sessions: Thursday Mornings 9:30-12:00 @ Wakefield Hall

The 2025 year will end 11th Dec having completed 47 session and will recommence 15 Jan 2026

The participation at sessions has grown in 2025 with 47% of participants travelling to Wakefield to create art and support our local business community.

We wish to thank Michael & his staff @ the Villa Café for displaying our Art Works, this is much appreciated by the members.

We will be displaying artworks for sale @ Oakwoods Retirement Village, Richmond from 1st November to 31st January.

You are most welcome to join our weekly sessions or simply pop in to see 'Art in Action'

MEALS ON WHEELS - VOLUNTEER DRIVERS NEEDED

Meals on Wheels are delivered from the Wakefield Homestead rest home to people in the Belgrove to Brightwater area

Monday to Friday
(excluding Public Holidays)
by a team of volunteers.

This service enables elderly and unwell people to remain in their own homes longer.

We currently have a vacancy for a volunteer delivery driver on alternate Mondays starting on December 15th.

Each delivery duty takes 1.5 to 2 hours.

We also need a pool of relief delivery drivers to do occasional fill in on a casual basis.

If you are interested in helping your community in this way, please phone or text Ian Nicholas (roster organiser) on 027 766 6937 or email on iannicholas.hr@gmail.com.

FOR SALE

Range of good boat fishing rods and reels.
No price set but open to sensible offers. Ph 03 541 8363

FOR SALE

Hyline Brown hens- available
Laying. Great layers and lovely temperament.
Msg Alison 0211680324 for more details.

FOR SALE.

FIREWOOD available. Very dry. If you've run short or want to stock up early for winter, this is available now.
Can be delivered. Ring Doug 0278465220 for details.

FOR SALE

EGGS. Free range, fresh, farm eggs. Great taste.
Available at 3 Clifford Road, Wakefield, between the Chemist and the police station.

Community Directory

Rutherford Memorial Hall
658 Wakefield-Kohatu Highway, Foxhill
Sue White 027 474 6324
www.lordrutherfordhall.org.nz

Higgins Heritage Park
info@higginsheritagepark.co.nz

Higgins Park Community Fair
info@higginsheritagepark.co.nz

Post Memory NZ
Sarah Arnold 072 341 7820
postmemorynz@gmail.com

Spring Grove Drill Hall
C Stratford 021 0268 5176

Totaradale Golf Club
Catherine or Ali 541 8030
totaradalegc@gmail.com

Wakefield Anglican Church
St Johns on the hill
Traditional Service: 9.00am
1st Sunday of each month

The Worship Centre
Service: 10.30am every Sunday
Food & Faith: 5.00pm every 2nd & 4th Sunday
Ph 541 8883 wakefieldanglican@xtra.co.nz

St Johns Worship Centre
Bookings Nigel Massey 027 243 1207

Wakefield Football Club
wakefieldfootballclub@gmail.com
www.wakefieldfc.nz

Wakefield Health Centre
541 8911

Wakefield Pharmacy
541 8418

Wakefield Playcentre
541 7097
Mon & Wed 9:30am - 12noon
Tue, Thurs & Fri 9am - 1pm
wakefield@playcentre.org.nz

Wakefield Volunteer Fire Brigade
CFO Wattie Mortimer 022 492 8841
DCFO Alana Shields 027 309 2953

Willowbank Heritage Village
willowbank2002@gmail.com

Country Players (Drama)
Jen Amosa 541 8139
enquiries@countryplayers.org.nz
www.countryplayers.wordpress.com

Nelson Vintage Engine & Machinery Club
Allan 027 319 7427

Pinegrove Kindergarten
03 542 3447

Rural Women
Diane Higgins 03 542 4388

St Joseph's Catholic Church
Mass - 5pm 2nd Saturday of each month
027 337 4622
office.admin@parish.org.nz

Waimea Sheepdog Trial Club
Sally Powell 021 773 461
Email: sally@tcvet.co.nz

Waimea Area Quilters
Kay Norgate 021 0811 4860
Marilyn Gibbs 03 541 8435
marilyncolingibbs@gmail.com

Wakefield Book Group
Mahala White - 541 8933 or
Chrissy Harris - 541 9596

Wakefield Bush Restoration Soc Inc
Evie South 541 8980 or 027 907 2879

Plunket Nelson Area Office
For appointments etc 539 5200

Wakefield School/ Community
Swimming Pool
C/- Wakefield School

Target Shooting Wakefield
targetshootingwakefield@gmail.com
Holly Gibbons 022 406 1674

Wanderers Sports Club
027 714 6160
jimmy@wandererssports.co.nz

Wakefield Toy Library
Saturday 9.30-11.30am
wakefieldtoylibrary@gmail.com

Wakefield Art Group
Thursdays 9.30am - 12pm
Alison 541 8822

Wakefield Website
www.wakefield.org.nz

Marlborough Nelson Marine
Radio Assn
Adrian Mullan 021 118 4832
www.mmr.org.nz

NZ Postcard Society Inc
Evie South 541 8980 or 027 907 2879

Spring Grove Church of Christ
Meet Sundays 10am
info.springgrovechurch@gmail.com

Waimea South Historical Society
Yvonne Tye 021 542 338

Wakefield Bowling Club
Phone club rooms on 541 8556
(Please leave message if
answerphone comes on).
www.wakefieldbowls.co.nz

Wakefield Brightwater Book Club
Sue McAuley 027 343 2410
vsmcauley@gmail.com
Meets last Tues of every month

Wakefield Community Council
Nathan Dunn 0210 869 0807
wcc.chairperson@gmail.com

Wakefield Village Kindergarten
20 Whitby Way
Phone 021 0227 1762
or 03 5418086

Wakefield School PTC
ptawakefield@gmail.com

Wakefield Tennis Club
Ngaire Calder 027 279 9938
www.caldertennis.co.nz

Wakefield Village Hall
Amby Cowe - 541 8869
ambynz@hotmail.com

Window on Wakefield
Articles & Content
Sonia Emerson 021 221 1009

Window on Wakefield
Advertising - 027 306 4237
Genie & Lindsay Bradley

Wakefield School
Edward Street - 541 8332

Justice of the Peace
Katie Greer - Ph 021 547 756

AED DEFIBRILLATOR LOCATIONS - AVAILABLE 24/7

Wakefield Four Square, Wakefield Bowling Club, Wakefield Football Club, Highfield Farm, Kohatu Flat Rock Cafe, Old Tadmor Store, Dovedale Hall, 29 Moonlight Road Glenhope, Corner of Totara View Road and Kilkenny Place, Corner of Martin Ave and Lord Auckland Road, Southfuels Spring Grove, Belgrove Cafe and Bar [what was], Lake Rotoiti Fire Station, Golden Downs Golf Club, Totaradale Golf Club.

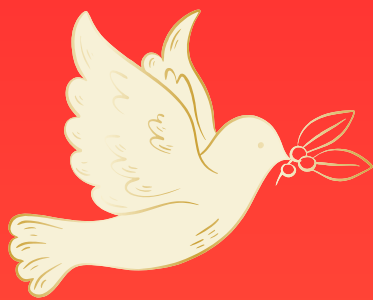
CIVIL DEFENCE - WAKEFIELD AREA COMMUNITY RESPONSE

In the event of an emergency, your first task is to ensure the safety of your own home, family and neighbours. Once you have attended to this, if you have **specialised skills/ equipment**, and/or feel you can assist others; or require assistance yourself, please make your way to the Welfare Centre which will be at the St Johns Worship Centre in Edward Street [unless notified otherwise].

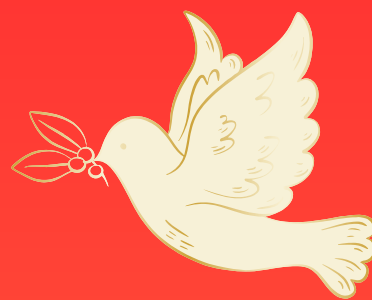
Please note that the existence of a Welfare Centre does not absolve each individual from their **responsibility to be personally prepared**. You should ensure that you have your own **survival kit** in place, and that you are able to be **fully self sufficient for at least three days**.

In the event of an emergency, for urgent public messages, tune in to:
More FM 94.1, Classic Hits 89.8, Fresh FM 95.4





Merry Christmas



Thank you for your support of Welcome
Real Estate this past year

When you support me I can pay it back into the
community 😊 Megan and I hope you find time to
have a rest over Christmas & New Year.

Please contact me with any real estate queries
over the holiday period.



Megan Shields & Wendy Pearson

021 567 722



elcome

