



window on **wakefield**

Your Local News

Community News for the Wakefield Area

Wakefield Country Players Celebrates a Successful Year

by Peter Verstappen

The recent annual general meeting of the Wakefield Country Players celebrated a highly successful year of local theatre. Country Players has been part of our village's rich community spirit for over 60 years and is enjoying a resurgence, with growing membership and a wide range of activities.

In the past twelve months the group performed nine plays over three productions. The first production in July 2017 was An Evening of Short Plays, featuring;

- Husband Murderer's Support Group
- In the Tank
- I Never Saw Another Butterfly
- The Gingerbread Girl

This was followed in November 2017 by Robert Lord's excellent kiwi Christmas play, Joyful and Triumphant, and a Variety Show in June this year that included music, dance and four short plays;

- A Talk in the Park
- The Kennel Club
- Molly and the Magic Phone
- First Light

In August 2017 Country Players hosted the district's Theatrefest (One Act Play) festival, with two of our short plays, In the Tank and I Never Saw Another Butterfly, going on to the regional finals in Christchurch, and In the Tank making it to the national finals in Wellington.

Altogether, these productions provided opportunities for 63 people from our community to be involved in performing arts; 52 on the stage and 11 assisting behind the scenes. Country Players is all-inclusive; the youngest performer during the year was four years old, the oldest 60+.

In her report to the AGM, chairperson Jen Amosa noted: 'this inclusiveness and community spirit is our company's strength and that's why our membership continues to grow. This community minded outlook stems from the people who make up our committee (and membership) and I thank you all.'

The AGM awarded the annual Don Ramsay Trophy for the best performance during the year to Rae Strasser for her ability to capture a diverse range of characters and create compelling performances in three plays during the year; I never Saw Another Butterfly, Joyful and Triumphant and A Talk In the Park.

Other nominees for the award were Hana Sinclair for her role as a Holocaust victim in I Never Saw Another Butterfly, and Cheryl Rozga as a hilarious and poignant nosy neighbour in Joyful and Triumphant.

Country Players' next production is the highly acclaimed and challenging musical play, Nell Gwynn, about the life and times of King Charles II of England's bawdy mistress. Auditions will be held on 22 July and the show will be on stage in November. The company is looking for a capable pianist to join the band for this production. If you are interested please contact Jen Amosa 027 334 1114.

At a time when community theatre groups are dwindling we can be proud that in Wakefield the Country Players continues to provide an outlet for local theatre enthusiasts and live entertainment for local audiences.



WINDOW ON WAKEFIELD

How it works...

Window on Wakefield is produced and published by Focus Wakefield, a subcommittee of the Wakefield Community Council. All businesses advertising in this publication incur a cost for the advertising space allocated, depending on the size and location of the advertisement. The funds raised from this advertising are used to cover the costs of printing Window on Wakefield. No parties are paid for the time involved with editing, coordinating and publishing this paper. It is the intention that if surplus funds are raised from advertising, that these will be held in a separate bank account to be used for other community projects. The bank reconciliations and financial reports related to this account will be made available to any person who wishes to view them.

Content...

Window on Wakefield is a community newspaper, and as such, we look forward to having articles and content contributed by our community. If you wish to submit a one off article, or suggest some regular content, please make contact with Sonia on 541 9005 or email windowonwakefield@gmail.com and read the Terms and Conditions below.

We try to ensure information published is truthful and accurate, but do not check the facts of the articles and therefore cannot attest to their validity. While all reasonable care is exercised, we do not accept liability for any loss whatsoever incurred through our errors, acts or omissions in relation to the content of an article, or for any consequences of readers relying on the information published. Opinions expressed by contributors do not necessarily represent the views of the Focus Wakefield group, nor are they necessarily endorsed by the Editor or Publisher.

Advertising...

If you wish to advertise in Window on Wakefield, please make contact with Genie or Lindsay on 541 9641 or email enquiries@wakefieldprint.co.nz and read the Terms and Conditions that will be provided on the rate card.

TERMS AND CONDITIONS REGARDING PUBLISHING OF CONTENT

- a. All articles and other content submitted for publishing must disclose the author's name or where the article/content is contributed by a community group, then that community group's name.
- b. All images should be provided to us in a high quality PDF format. We take no responsibility for the quality of reproduction for images that are not supplied to us in this format.
- c. If you wish to make changes to an article or content already submitted, please ensure these are communicated to us before the relevant deadline date.
- d. When you submit an article or other content for publishing you:
 - agree that the submitted material and/or images can be reproduced by the Editor or Publisher at any time without your prior approval
 - agree that all photographs submitted for publishing are provided free of charge, and the approval to print has been obtained from any persons shown in the photo - this is the responsibility of the person submitting the photo
 - acknowledge that all material is held by us at your risk and is not insured by us. Material will only be returned on request and may otherwise be destroyed by us
 - warrant and undertake that no statement, image, representation or information contained in your supplied article or content:
 - * is or is likely to be misleading or deceptive;
 - * is at all defamatory, in breach of copyright, trademark or other intellectual or industrial property right;
 - * is otherwise in breach of the Copyright Act 1994, Defamation Act 1992, or any provision of any Statute, Regulation or rule of law.
- e. We reserve the right to decline the publication of any article or any content whatsoever on any grounds that we in our absolute discretion see fit.



Jill O'Brien

R D 1 Wakefield
Rural Mail Contractor
**FOR ALL YOUR
MAIL NEEDS**

Stamps, Parcels, Freight
Phone 541 8963
Mobile 027 324 2126

**DID YOUR BUSINESS
MISS OUT THIS TIME**



**DON'T DESPAIR
WE HAVE SAVED
A SPOT FOR THE NEXT
PUBLICATION
JUST FOR YOUR BUSINESS**

Give us a call
541 9641
or
Email
info@wakefieldprint.co.nz

NEXT EDITION

Due out the first full week of each month

All Advertising to be submitted by the 20th of the Month prior

All Content to be submitted by the 23rd of the Month prior

For Advertising please contact Wakefield Print Ltd 541 9641

For Content please contact All Accounts Matter Ltd 541 9005



The Way We Were

EARLY SETTLERS IN WAIMEA SOUTH

FAMILY HISTORIES HELD IN THE RESEARCH ROOM TASMAN DISTRICT LIBRARY

Prepared for the Waimea South Historical Society by Roger Batt

It will soon be family history month and for anyone setting out on the journey of tracing their ancestors it is useful to know what resources are held in the Tasman District Library.

The catalogue is always the place to start and if you have no particular title to search for, the surname of the person and where they lived are two necessary key words. You may be lucky to find a book in the general collection in the Biography (920) section which you can borrow. However, there is every possibility that information on the person you are searching for can be located in the Research Room which holds items which are no longer in print, are scarce in number and not easily replaceable. It also holds one copy of any book published in or about the Nelson/Tasman region.

These are held in locked cupboards in two separate collections: Waimea South books (held by the library under a special arrangement) and Local History books - reference books considered valuable enough for one copy to be accessed under controlled conditions as well as other copies which may be in the main library for general borrowing. Waimea South also has general local history books such as JNW Newport's Footprints.

To access these collections, just tell the library staff what you are looking for after you have checked the main catalogue. You will be able to access the material in the library, make notes or obtain copies of selected pages for a small fee. Copyright conditions will apply which library staff will tell you about. This generally relates to the number of pages which may be copied and the need to acknowledge the title and author of the resource.

Waimea South also has a filing cabinet of material which is not in bound book form available for public access under the same conditions. You can, of course, access the Tasman District Library collection from home if you have internet access.

Waimea South Collection.

For a complete list simply select Richmond Library from the first drop-down box, and then Waimea South Collection which is the bottom category under that. Select All Fields from the second drop-down box and the resulting list of 228 titles will appear. The following is a list of some book titles held in the Waimea South Collection:

Better prospects: the Parkes family history

Country ways in two countries: Jonah Russ from Somerset and his New Zealand descendants: a family history written by the family

Rosemains: the family history and tree of Thomas and Jane Hopgood and their children

History of the Drummond family of Dehra Doon, Riwaka

Some Knyvett papers. 2: Knyvetts in New Zealand

Thistles and roses: the ancestors of Donald Steward and Harriet Johnson, and their New Zealand descendants

Isaac & Mary Ann Gibbs and their related families Volume 1- 6 Chapters 1-5 Bromell, Trower, Cole, Fenemor, Quinney, Stringer, Hodgkinson, Ilton, Elvines, Mead

The Readers: of Dorset, New Zealand and Yorkshire 1660-2003 (Reeder family)

Andrews family tree: with emphasis on the ancestor's family and descendants of Ann Elizabeth Andrews

The Cropp family from 1780 in England to 1998 in New Zealand

These are the memories of early Wakefield of Keneth Carrol Frater: who attended Wakefield School from July 1925 to December 1931, with time in Standard 7 in 1932

Rutherford: the early years

Below deck: an account of the ancestors and descendants of James Burn and Bessie May

The Burbush family in England and New Zealand

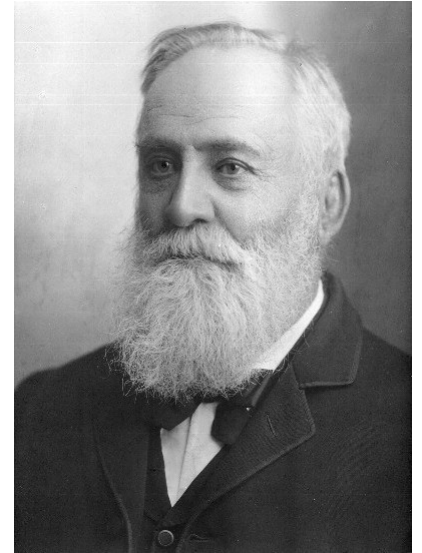
A history of the Fowlers: Gloucestershire – New Zealand, 1520-1986

The Hills in order: an account of Thomas and Ann Hill and their family in Gloucestershire and Nelson

Stratfords: from Preston Capes, Northamptonshire England to Richmond Nelson New Zealand

London to lonely Rai (Turner family)

A link with the past (Davis family)

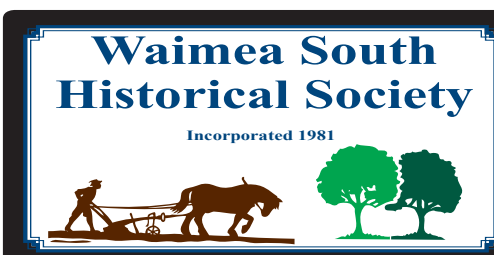


John Martin Croucher - Mayor of Richmond (April 1903 - 1907)



*Eddie Miller and Grace Newport
Married in Takaka October 10th 1940*

... continued on page 4



Explore the
past with us
www.waisouth.wordpress.com

Art Group

by Sonja Lamers

The Wakefield Art Group hosted a workshop with Des Whyman on Drawing Portraits on 31 May 2018.

It was well attended with a full house and several participants from outlying areas.

Thank you Des for your tutoring and the helpful hints given throughout the course.

Our art group meets Thursdays at the Wakefield Village Hall, starting at 9.30am.



The Way We Were [Continued]

Local History Collection

The following is a list of some titles in the Local History collection which you can select from the first drop down box. Select All Fields again to discover a list of 830 titles:

To seek my fortune: Bruning family history: from Mecklenburg to Moutere

Between the Sheates: the families of Sheates, Bells, Higdon's, Grahams, James's & Lusby's in early New Zealand

Mary's two grandmas, part 1: Mary's grandma Bryant

Mary's two grandmas, part 2: Mary's grandma Wallis

Growing up in old Richmond

Claude Reilly and his valley of enchantment

Mt Arthur looms large: Wiltshire to Motueka: stories of the Heath settlers

Happy hunting everyone!

Acknowledgements:

Waimea South Historical Society Kete Collection Tasman District Library



Lyall Newport in School Uniform Golden Bay 1925-26



BERNE'S BODY FIT REACH YOUR FITNESS GOALS!

WANT TO BE FITTER? FEEL STRONGER? JUST FEEL HEALTHIER?

- Personal Training for all fitness levels
- Weight loss and management
- General fitness
- Strength training
- Event and sport specific training
- Nutrition advice and cooking tips
- Free initial consultation

Berne McNaughton -Diploma in Applied Fitness

Phone or text 021 1391 694

Email me at bernesbodyfit@gmail.com

120 Eighty Eight Valley Rd Wakefield, Nelson 7025



Kate West NZRP, BPhy

Accident & Sports Injuries
Neck & Back Pain
Vestibular Rehab

All Sprains & Strains
Pre/ Post Surgical rehab

ACC & PRIVATE TREATMENTS

03 541 8911

At the **WAKEFIELD HEALTH CENTRE** 12 Edward Street, Wakefield

info@wakefieldphysiotherapy.co.nz

www.wakefieldphysiotherapy.co.nz

Health

SCREENING FOR BOWEL CANCER

Bowel cancer is the second highest cause of cancer death in New Zealand. The earlier it is detected, the more likely it is that treatment will be successful.

From August 2018 Nelson Marlborough DHB will be starting a bowel cancer screening programme. This is a free programme for anyone aged 60 – 74 years.

What do I need to know about screening?

- You will automatically receive the testing kit in the post if you are between the ages of 60 – 74
- It won't cost you anything!
- You will be invited to complete the screening every two years
- You don't need to eat – or not eat – anything special before doing the test
- You can do the test in the privacy of your own home



How will I get the result?

Positive results will be sent to your GP Practice and they will let you know. If the test is negative, you will be sent a letter from the National Bowel Screening Centre.

What happens if I get a positive result?

The most important thing to remember is that a positive result does not necessarily mean you have bowel cancer.



The test looks for small amounts of blood. Sometimes blood can be present from piles, or small polyps in the bowel.

If your result is positive, you will be offered a referral for a colonoscopy. This involves putting a thin tube into your anus. The tube has a small camera and is used to see if there are any issues inside your bowel.

Possible signs of Bowel Cancer can include:

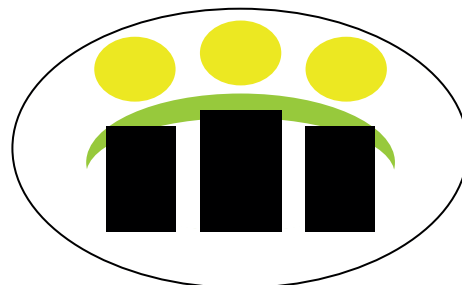
- a change in your normal bowel habit that continues for several weeks
- blood in your bowel motion.

Although these symptoms are usually caused by other conditions, don't wait for the screening kit to arrive in the post – come and see your GP!

Want more information?

There is some good information about the screening programme and how to do the test on this website:

www.timetoscreen.nz/bowel-screening/



Wakefield Health Centre

Surgery hours:

Monday to Friday 8am – 5:30pm

Wednesday 8am – 7pm

New Enrolments Welcome

Phone 541 8911

12 Edward St Wakefield

AFTER SCHOOL ART CLASSES

Wakefield Classes beginning 12th February

Mondays or Thursdays
3.30 - 4.30pm (ages 6 - 8)
4.45 - 5.45pm (ages 9 - 11)

Contact Amanda for more information:

amandaledger@xtra.co.nz
021 055 0161 or 541 8877



Wakefield ELECTRICAL LTD

We Do All Electrical Work (incl. Caravans WoEFs)

Andrew Smith - Electrician/Inspector

— Est. 2013 —

03 541 8797 - 027 441 8797

"Your Local Electrician"

Hazelbrook

The home of PHI Hazelnuts
2018 season nuts now available
See us at the Nelson Saturday Market
or Door Sales at...
126 Wakefield-Kohatu Hwy, Tasman



Be quick to beat the squirrel's ☺



(PHI) Ph: +64 03 541 8901
www.phi-hazlenuts-nelson.co.nz

PGG Wrightson Real Estate

Mark Terry

**Rural, Viticulture
and Lifestyle Sales**

Whether you are buying or selling lifestyle,
residential or rural property, contact me for
an honest and fresh approach to all your
Real Estate needs.

No.1 Residential/Lifestyle Sales
TASMAN REGION 2017

M 0275 722 559 | H 03 5722 559
E mark.terry@pggwrightson.co.nz



www.pggwre.co.nz

PGG Wrightson Real Estate Limited, licensed under the REAA 2008.

Helping grow the country

WAKEFIELD AND DISTRICTS HEALTH TRUST

AGM

Wednesday 25th July

7.30pm

Wakefield Medical Centre

Practical legal advice in Richmond

Kaye Taylor & Jennifer Penny
are available at 66 Oxford
Street, Richmond, to
assist new and existing
clients with all aspects of
property and business
law and the many
issues related to
relationship property.



03 548 8349
www.pittandmoore.co.nz

PITT & MOORE
LAWYERS AND NOTARIES PUBLIC

Live Well Stay Well Group

by Margaret Clark

“Live well Stay well” is a health and social group that meets two weekly in Wakefield or Brightwater from 9.45-11am. A varied programme is organised which is informative and fun plus regular coffee and chat sessions.

The group is often followed by a walk (and talk) around Wakefield or Brightwater for those who feel like being more energetic. All interested are welcome to attend especially if you are new to the village or want to meet some local people.

Over the last weeks we had a visit to “Plant and Share”, an organic handcrafted skincare business in Pigeon Valley, where we learnt a lot about how the products were made and distributed. We saw and sampled Calendular Balm made and packaged in the workshop (see photos).

Also last month we heard from Gary Dunn with a “Safe Driving” short course (most worthwhile) and learned a lot about being the best driver we can be on today's roads.

What's coming up for July?

July 10 - Meet at the Wakefield Bakery 9.45am for coffee and a chat. After this we look into one of New Zealand's oldest churches, St Johns Anglican, where we will learn about its history with Caroline Gibbs.

July 24 - Wakefield Hall 9.45 - 11am. Speaker will be Judge Oke Blaikie who will talk about the life and experiences of a retired Judge.

August 7 - Meet at Cafe Rhubarbe 9.45am for coffee and a chat, and then off for a walk somewhere.

Anyone is welcome to attend.

Any enquiries for transport or to go on our email list to let you know what's happening, please call Margaret 541 9693 or Yvonne 542 2235 or Sandra 541 8124.



Painter



Interior, Exterior & Wallpapering

For a Free Quote
Phone Peter Thompson
027 444 93 64
A/H 03 541 9678

62 Whitby Rd Wakefield

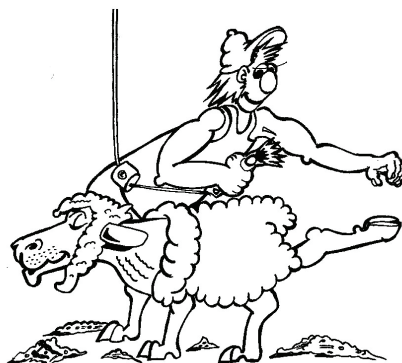
Mike Lewis Shearing

Lifestyle block shearer
available

Sheep/Alpacas

All areas covered

Ph 03 541 9794



WAKEFIELD COMMUNITY COUNCIL

AGM

Monday 16th July

7.30pm

St Johns Worship Centre

Looking to get more involved
with your community, please
come along to our AGM and
share your skills and have
input into your community

Wakefield Volunteer Fire Brigade

Good morning to you all, I hope you are all keeping warm and driving carefully especially with our icy road conditions we are having.

At the start of this month we went to three separate bad MVA calls in a time span of only 90 minutes and then we went for 21 days without a call which is one of our longest periods without a call I can remember. So there is some bad news as well as good news this month.

On June the 9th we held our honours night evening which recognises the time and service our volunteers put into the Fire and Emergency NZ as well as the community which I would like to share.

Currently our average length of service is 19 years which is great because of the experience and depth the brigade has but at the same time we can see our new members are coming through as well.

The other interesting stat is the average age for this young brigade is 46 years which is good news for some of us.

Question - so how old is Euan who has completed 44 years service?

Service Completed

Euan Lawson	44 years
Peter Holland	40 years
Kevin Douglas	38 years
Peter Ladley	37 years
Blair Hall	28 years
Fritz Buckendahl	27 years
Robert Neame	27 years
John Ross	25 years
Simon Ladley	23 years
Martin Harrison	21 years
Dot Ashton	17 years
Dean Ashton	16 years
Andrew Lane	14 years
Karen Peters	8 years
James Rees	6 years
Roger Duncan	5 years
Daniel Boustridge	5 years
Brent Eggers	3 years
Lee Wiren	1 year
Stuart MacDonald	1 year

Fritz Buckendahl
CFO Wakefield
027 22 44 162



Live Well, Stay well

Speaker

Judge Oke Blaikie

On the Life and experiences of a retired Judge



On Tuesday July 24th 9.45am–11am

at the Wakefield Village Hall

Followed by Wakefield Walkers 11-12md

Contact Margaret 5419693, Yvonne 5422235 or Sandra 5418124 for information



Call outs for June

MVA	Car vs ute	Hope Saddle
MVA	Car vs tree	Lamb Valley
MVA	Motorbike vs bridge	St Arnaud
Fire	Fire in kiln	Eves Valley Sawmill
Medical		Spring Grove

Total calls for the year so far = 67

(PFA = Private Fire Alarm
MVA = Motor Vehicle Accident)

Total calls for the year 2017 = 132

Wakefield Bowling Club

by Tony Eames

The Queens Birthday weekend tournament sponsored by Wendy Pearson, Tall Poppy Real Estate was held over two days. It is a very popular event with teams travelling from around the region and players from as far away as Greymouth and Taupo.

After Saturday's play, teams were placed in two divisions for the second day final rounds based on the first day's results.

Winner overall was the Takaka team of Murray Foskett, Gary Richards and George McGeady, second was Wakefield's Margaret and Tony Eames and Julie Hall and third was the Fowler family team from Motueka.

The second division was won by Wakefield's Chris Longman, Yvonne and Alan Robertson.

The Winter Championship 2-4-2 Pairs was won by Kevin Galvin and Margaret Eames. It was a very competitive event with close games all round and requiring a count back for the final places.

The Club's AGM was held on 24 June. Julie Hall was elected President for the year ahead, David Cartwright Vice President, Alan Robertson Treasurer and Margaret Eames Secretary. Board members Chris Longman and Tony Eames.

Bowls continues throughout the winter months with social roll ups on Wednesday and Friday afternoons with a social time after play and various events on other days.

Anyone interested please call into the club or phone the rooms on 541 8556 (leave a message if the answer phone is on).



Top Right:
Winner of the Club Championship 2-4-2 Pairs:
Kevin Galvin and Margaret Eames.

Right:
Winner of the Queens Birthday weekend tournament:
Murray Foskett, George McGeady and Gary Richards.




Jason Preller A.N.C.H
Tel: 03 526 6095 Mob: 021 167 3803
Email: kernow4construction@gmail.com



DOES YOUR BODY NEED A BUILDER???

Bob the builder I am not but BODY REALIGNMENT I have got
Aches, pains, sports injuries, sore knees, back and neck
Give me a go what the heck
Comfortable and non intrusive is my way
working with you to make head way
With years of training under my belt
I will give you my best to help you out
Text or Call Bob 0275 150 928
bobsaunders@email.com
minimum session time 30mins (\$30)
First session is one hour \$60

Special offer for Window on Wakefield readers
First session \$40 for the hour

In the Bush

A sincere thank you to the many hardy souls who joined us for the society and public planting at Faulkner Bush on Saturday 9th June. We got approximately 400 natives planted with a further 350 needing to be planted out at our next get together on Saturday the 14th July 2018 from 10am until noon. DO join us – meet at the Scout Den.

Thank you to the TDC for providing these plants, also to Evie-Joy South and Avis Blowers for setting up the delicious brunch and for those who also provided some much appreciated home baking.

Sirett Family

It was indeed our privilege to have a visit on the 2nd June from Pamela Sirett's family. Pamela had been a founding member of our society and our Vice President for many years until her passing in August last year.

Pamela now has her own "memory seat" put together by our society members, Eric Palmer and Chris Tonkin.

A plaque in her memory will also be placed on the seat, with a verse which so typifies our dear Pam and was provided by her family. "Friendships formed and good times shared".

The photograph on the seat - left to right son Dale, husband Cliff and son Glenn.

Pamela's family have also given a very generous donation to our society to continue our "bush" work in the years to come.



Update on the Edward Baigent Memorial Scenic Reserve

Most of the topsoil has now been delivered and extra special thanks to Fulton Hogan for their input in this process. Also again to Craig Smart (Craig Smart Contracting Ltd) who not only provided some more topsoil but spent time giving his knowledge, expertise/opinion for when we do the spreading etc. We so appreciate all the companies and our new "friends" who have come out of the woodwork, to get things moving in restoring this Scenic Reserve back to an eventually pristine community picnic area.

WHY NOT JOIN US – New members always welcome – Do give us a call.

Thank you
Regards Doug South
President Wakefield Bush Restoration Soc Inc. (since 2000)
Telephone 541 8980 Mobile 027 907 2879
Email tuiville@xtra.co.nz

WAKEFIELDQUARRY

Drainage metal : Hard fill : Basecourse 70mm : Topcourse 40mm & 20mm
Landscape rock : Lime

**Sorry no more trailers or utes may be loaded because of the safety risk.
We do have a 2.5t tiptruck available.**



566 Church Valley Road, Wakefield

Ph: 5419093

Mon - Fri 7.30am - 5pm

Please send your
obituaries,
birth announcements,
wedding stories,
other celebration
notices
to us at
windowonwakefield
@gmail.com
or ring 541 9005

Craig Smart

CONTRACTING LTD

DIGGERS & TRUCK WORK

- Landscaping - Topsoil Screening
- Root Raking - Site Clearing
- Driveways - Gravel Supplies
- Trenching - Posthole Boring

541 9626 or 0274 440 441
craigandcath@xtra.co.nz



**SPECIALISING IN
SOLUTIONS FOR ALL
BUDGETS AND NEEDS**

Give Sam from Carter & Sons
Concrete a call for a free Quote
and Assessment
on 0275-811-621.

CALL TODAY!!

Proud to Sponsor
Wakefield Football Club



- *Arborist work
- *Tree felling
- *Hedge trimming
- *Landscaping projects
- *Shrub cutting and gorse control
- *Planting and re vegetation projects
- *And much more green care
of your property

This is done by a trained arborist
and nurseryman with many years of
experience in plant production and the
landscape business

contact MORTEN for a free quote
Ph: 021 206 9914 or 541 86 85
email: mortenlausen@gmail.com
www.nelsonlandscaping.co.nz

We have a Vermeer s800tx,
a multi purpose landscaping and
property maintenance machine.
It's small, powerful and versatile.
It can get into tighter areas and
is property friendly leaving little
impact on the ground

- Lawn preparation and laying
- Spreading of loose material (stones, bark, etc)
- Hole drilling/Auger work (planting, post holes etc)
- Stump removal
- Earthwork (small)
- Section clean up
- Landscape work
- Trenching
- Rock-work



Full insurance cover while all work is being done

FIX UP
SET UP
BACK UP
CLEAN UP
TABLETS &
COMPUTERS

**mobile
computing**

In Nelson
since
1997

548 1787
027 224 0955

Fran's the Man!
fran@mobilecomputing.co.nz

Still no call-out fee &
we still come to you.

Whats on at your local in...

JULY

- .3rd Quiz Night 7.00
- .5th Darts Night 7.00
- .6th Social Pool Comp 7.00
- .7th Live Music from Kramit
- .12th Darts Night 7.00
- .13th Social Pool Comp 7.00
- .19th Darts Night 7.00
- .20th Social Pool Comp 7.00
- .21st Live Music from Bex & Kingz
- .26th Darts Night 7.00
- .27th Social Pool Comp 7.00

LIVE MUSIC 7TH JULY



Saturday 21st July

The Wakefield Hotel

Your Local...Where good times begin...



48 Edward Street
Wakefield
03 541 8006

Info@thewakefieldhotel.co.nz



Wakefield Playcentre

by Liz Ashburner

“To appreciate the beauty of a snowflake it is necessary to stand out in the cold” - unknown

While we might not get much snow in Wakefield, we certainly get some decent frosts and it has been lovely arriving in the morning to a beautiful frosty playground. Although it is often tempting to stay inside until it warms up, the tamariki get so much joy out of playing with the frost and ice and don't seem to mind the cold nearly as much as the adults do. We try to encourage our children to explore the outdoors regardless of the weather – there is no such thing as bad weather, only bad clothing.

This month we really enjoyed walking down to Faulkner's Bush to support our graduates and older siblings in the Wakefield School cross-country. Our tamariki enjoyed it so much we held a Playcentre cross-country the following week. Some of our older children set up a track using cones around the outskirts of the centre and we supported each other to run all the way around. It was a lovely example of child-led learning that included the whole centre.

Our Matariki celebration was another highlight of the month. We met on a Friday evening to share kai, stories and candlelight around an open fire. It was a magical evening that really celebrated winter and our wonderful whanau. Thanks everyone who came along and made it so special.

Wakefield Playcentre is a fully registered Early Childhood Education provider and follows Te Whariki, the NZ ECE curriculum. If you are interested in finding out more, call in Monday to Friday (term time only) between 9.30 and 12.00.





Damien O'Connor

MP for West Coast-Tasman

Minister of Agriculture, Biosecurity and Food Safety

Minister for Rural Communities

Minister of State for Trade and Export Growth

234 High St, Motueka | phone 03 528 8190

208A Palmerston St, Westport | phone 03 789 5481

181 Tainui St, Greymouth | phone 03 768 7189

Freephone 0800 326 436



 [damienoconnormp](https://www.facebook.com/damienoconnormp)



Authorised by Hon Damien O'Connor, Parliament Buildings, Wellington



TOWN & COUNTRY

VET

"...for all creatures great & small..."

Open Monday - Thursday 8.30-5pm

Consulting Hours

Monday afternoon with Brenda

Tuesday morning with Brenda

Thursday morning with Paula

Ph 541 8974

info@tcvet.co.nz * www.tcvet.co.nz

Edward Street, Wakefield

Head office 35 McGlashen Avenue, Richmond



544 1200 24 hours

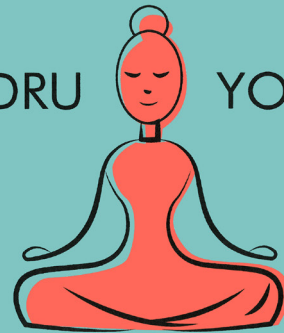
Quiz Questions

by Derek Evans

1. What kind of weapon is a falchion?
2. Which word goes before vest, beans and quartet?
3. Which English town was the first city in Europe to have a street tram system?
4. Where would you find the world's most ancient forest?
5. Which kind of bulbs were once exchanged as a form of currency?
6. Name the only heavyweight boxing champion to finish his career of 49 fights without ever having been defeated?
7. What does the term 'piano' mean?
8. Who invented TV?
9. How many crocus flowers does it take to make a pound of saffron?
10. What is sushi traditionally wrapped in?



DRU YOGA



Dru Yoga is a graceful and potent form of yoga, based on soft flowing movements, directed breathing and visualisation. With its foundations set firmly in ancient yogic tradition, Dru works on body, mind and spirit to rejuvenate your whole being

Designed to be practised by people of all abilities, all fitness levels and all age groups

If you want to physically strengthen your body and emotionally enhance your mind, Dru Yoga will give you the tools to take into your daily life and help you cope with the stresses of modern living

Mondays 9.30 - 11am
Tuesdays & Wednesdays 6.30 - 8pm
Saturdays 10am - 11.30am
RSVP your interest

\$12 per class, 1st class **FREE!**

Classes up to 9 students, RSVP to book a space

Karen Petrie 027 917 3504

Email: tandkpeters@xtra.co.nz

47 Telenius Road, Springrove

Find me on Facebook: The Yoga Room



Wakefield School 175th Anniversary

Event Address: Edward Street, Wakefield School

Contact us on 03 541 8332 or email 175wakefield.school@gmail.com

For the Wakefield School 175th Anniversary Celebration, a varied weekend is planned for the pleasure and enjoyment of attendees. **PLEASE SPREAD THE WORD NEAR AND FAR!!** Here is a bit of an outline of what we have planned.

SCHOOL OPEN AFTERNOON AND ASSEMBLY - Friday 9 November

You are welcome to come and join us at Wakefield School for the afternoon. The school will be open for viewing from 1.15pm with a special 175th assembly led by some of our students to take place at 2.00pm.

WINE AND CHEESE EVENING - Friday 9 November

Our official welcome to attendees will take place on Friday evening from 7.00pm at the Wakefield School Hall. This will comprise of a welcome from the current Principal, some brief entertainment, wine and cheese and the opportunity to mix and mingle with old friends.

BUS TOURS - Saturday 10 November

Bus tours will be running from the Wakefield Village Hall visiting multiple sites including Willowbank Heritage Village, Higgins Heritage Park, and the sites of a number of former schools. The buses will leave at 10.00am and return in time for attendees to make their way back to Wakefield School for the photos.

DECADE AND SPECIAL PHOTOS - Saturday 10 November

Photos provide a great historical record for the school, so we will take this opportunity to take photos of past pupils and staff.

SCHOOL GROUNDS FESTIVAL - Saturday 10 November

Wakefield School PTA will be organising entertainment, stalls and a variety of food options at the Wakefield School grounds, starting at 3.00pm. We invite everyone to take part, enjoy the entertainment, take part in the activities and purchase food of your own choice from the stalls for your dinner.

SATURDAY NIGHT SOCIAL EVENT - Saturday 10 November

Starting at 7.00pm we have local band Boogie Train playing until 10.00pm in the Wakefield School Hall. A cash bar will be operating and a light supper will be served. Doors will be open from 6.30pm. In addition we will be providing a "breakout" space in two classrooms to allow those who wish to mingle with old friends in a quieter space to do so, away from the music and dancing.

WAKEFIELD SCHOOL 175th ANNIVERSARY CELEBRATION BOOK

We are very fortunate that Arnold Clark has continued the work done in the past by writing a book covering the last 25 years of Wakefield School. This book will be launched on the Friday night and available for order before, and during the event, and after subject to availability.



**The
Elegant
Frog**
VINTAGE & CURIOS

Beautiful, Distinctive and
Exclusive Vintage and
New Giftware
& Specialising in Up
Cycled Vintage Furniture



Charlie is wrapped in our new range of winter scarves and gloves

Store hours through Autumn & Winter
Thursday - Friday 10am - 5pm
Saturday - Sunday 10am - 4pm

Be inspired, Our store is dedicated to all things pre-loved, unique and beautiful.

Loads of treasures and bargains to be had for the thrift thrill seeker. Furniture, china, crystal, soft furnishings and a unique range of new & pre-loved giftware to suit everyone.

10 Clifford Road, Wakefield Nelson Ph 541 9559
www.elegantfrog.nz
Facebook – the elegant frog – for weekly updates of stock



**Pretty Crafty
Winter Market**
Stoke Memorial Hall
Sunday 22nd July
10am - 2.30pm

Co-Ordinators: Kala 027 224 1001 & Sally 027 307 7410

Waimea Plunket Playgroup

by Amby Cowe

These cold mornings have us all rugged up inside in front of the heaters at Waimea Plunket Playgroup! That is until the children lead us outside to play in the sunshine.

In recent weeks we have had lots of new families join us. It has been wonderful to get to know other local mums and grandparents.

When I joined up with playgroup over six years ago in Wakefield, I found it to be very welcoming and I made many friends who I am still close with today as our babies go through school together.

In June Waimea Plunket Playgroup families were offered a mini photoshoot for a donation to Heart Kids. This was popular and lots of fun for the children and mums playing in the last of the autumn leaves.

Waimea Plunket Playgroup will be closed during the school holidays but will restart on the first Wednesday of Term 3 (can you believe we're up to Term 3 already?!), 25th July.

Waimea Plunket Playgroup is run every Wednesday morning (during term time) from 9am - 12noon in the crèche behind St Paul's Anglican Church hall, beside Snowden Bush. It's FREE to come along and we provide morning tea to children and caregivers.

We look forward to seeing you in Term 3!





The Vet Centre

Whether you have cattle, horses, dogs or cats, the staff at the Vet Centre always endeavour to treat each animal as an individual for personal patient care. Let us help you to treat your animals with the quality care they deserve.

For a happier, healthier animal, family and lifestyle come see us at The Vet Centre Richmond.

Our services include

- Large animal and Equine services
- Small animals furry and feathered
- Surgery and dental procedures
- Digital x-ray and Ultrasound
- Free Travel to Tapawera on Thursdays
- Puppy Classes and nutrition consults and so much more!



24 hour emergency 03 544 5566

www.vetcentre.net.nz

Richmond Clinic - Gladstone Road 03 544 5566

Motueka Clinic 03 528 8459 and Mapua Clinic 03 540 2329

Keep an eye on our promos on Facebook

PROMOTEYOU

Design, Brand, Print, Promote

Same Business

Same Team

Same Service

Brand New Name to

PROMOTE YOUR BUSINESS

www.promoteyou.co.nz

Your Local Team: Genie & Lindsay

Ph: 03 541 9641 E: info@promoteyou.co.nz

Wakefield Print Ltd Trading as Promote You



WINTER DRIVING



We'll make sure you're good to go!

Book in and get your WINTER SAFETY CHECK



Heater & Demister



Tyre Tread & Condition



Antifreeze



Battery



Lights



Fluid Levels



Wipers & Washers



Brakes

We'll make sure your vehicle is **safe and ready** for winter driving.

Did you know we accept these cards?

Farmlands
Caltex Starcard
CardSmart



AND NOW ACCEPTING Z CARDS!



WAKEFIELD AUTO SERVICES LTD

67 Whitby Road, Wakefield 7025

Phone 541 8121 www.wasl.co.nz

ENJOY THE JOURNEY  **CALTEX**

A Matter of Accounts

GST - How Do I Register and What Do I Do Next?

by Sonia Emerson, CA, BBus

In order to register for GST, you need to know what structure you are going to use, and then ensure that you have an IRD number for the applicable structure. This might mean that you need to apply to the IRD for a number if you have just set up a company or partnership. The IRD have application forms on their website for applying for an IRD number, and also for registering for GST, or you can do it through your myIR logon.

To be able to complete the application form, you will need to think about the following things:

Your Business Industry Classification code - you need to search this on the ACC's website www.businessdescription.co.nz. This tells ACC what type of business you are in, and enables them to create an ACC invoice applicable to your business type in due course.

An Accounting Basis - there are three options;

o **Payments** - The payments basis is only available if your annual turnover is under \$2 million. When using the payments basis, you account for GST in the taxable period in which you actually make or receive the payment. This basis is suitable for small businesses as it more closely aligns the GST to be paid/refunded to the IRD with the cashflow of the business. A cashbook can provide a sufficient method of recording transactions, and there is less need for a "financial system".

o **Invoice** - When using the invoice basis, you claim GST when you receive or issue an invoice, or receive and make a payment, whichever comes first. This therefore may not align with the actual cash in/out of the business. At the end of each period, you need to be able to identify invoices you have raised but have not yet been paid for, and bills that you have received but not yet paid, in order to account for these items as well. A computerised accounting system can come in handy for this purpose, but is not compulsory as there are other ways to track these items.

o **Hybrid** - You claim GST on your expenses using the payments basis and account for GST on your income using the invoice basis.

A Taxable Period - there are three choices of taxable periods:

o **Monthly** - If your taxable supplies in a 12 month period are more than \$24m, you must use this period. You may also choose to file GST returns every month if you expect to receive regular GST refunds, eg as an exporter, or find it easier to work out your GST for a shorter period.

o **Two Monthly** - This is the standard taxable period and there are two different filing frequencies ie the two month period ending on the last day of Jan, Mar, May etc, or the two month period ending on the last day of Feb, Apr, Jun etc.

o **Six Monthly** - only available for small businesses and you can select the months in which the taxable periods end. If your turnover is greater than \$500,000, the IRD may allow you to stay on a six monthly basis in certain circumstances.

Obviously every business is different but upon discussion with clients, the combination that I would recommend the most frequently would be Two Monthly Payments basis. This is because it aligns most closely with the cashflow of the business. The reason I generally don't recommend the six monthly frequency is that if there is GST to pay, after six months the amount is a bit more significant and unless the business is very good at setting aside the funds each month, it will be harder to find the money to pay the IRD. If there is a GST refund, then you have to wait six months to get the funds refunded to you from the IRD.



WHAT YOU NEED TO DO AFTER YOU HAVE REGISTERED FOR GST

Once you have registered for GST it is compulsory to:

- Charge GST at 15% on all your sales [except if you are making exempt supplies]
- Give tax invoices to GST registered persons within 28 days
- Keep GST invoices and receipts when you buy goods or services for your business
- Keep any other documents which support the figures shown on your GST returns
- File your GST returns by the due date and pay any GST to be paid to the IRD by the due date

This information is intended as a guide only - it is not intended as specific legal or accounting advice. For more detailed information please refer to the legislation or seek legal and or accounting advice.

All Accounts Matter Ltd

For All Your Accounting and Tax Needs



Sonia Emerson
Chartered Accountant

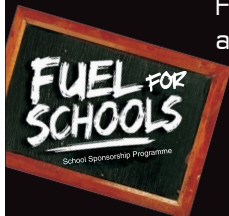
Mobile: 021 221 1009
74 Whitby Road, Wakefield 7025
Phone: 03 541 9005 Fax: 03 541 9305
Email: allaccountsmatter@gmail.com

southfuels

Spring Grove

Check our board – we're 6c cheaper everyday – no voucher or card required, no minimum spend

Fuel up at Southfuels Spring Grove and help support Wakefield School.



Every time you fuel up 1 cent for every 2 litres purchased goes back to the school by way of a Southfuels Donation

24/7 Outdoor Payment Terminal

Available with all eftpos, z card, major credit cards



Ph **541 8444**

Fax 541 8445

Main Rd North

Wakefield, Nelson

springgrove@xtra.co.nz



*FOR A PROFESSIONAL, DEDICATED BUILDING SERVICE
"FROM BEGINNING TO END"*

- All Building Projects Undertaken from Large to Small
- Licensed Building Practitioner and Trade Certificate Qualified
- Site/Project Management
- Over 35 Years Industry Experience



*WE ARE A REPUTABLE AND PROUD FAMILY OWNED
AND OPERATED BUILDING COMPANY*

ROWAN READER

M: 021 154 6040

E: redwoodbuildingservicesltd@gmail.com

It's all about teamwork!

Working together and supporting each other to ensure great results



Lydia Heyward

M: 027 432 8532 B: 03 928 0469

E: lydia.heyward@bayleys.co.nz

 www.lydiaheyward.co.nz

 LydiaHeywardBayleys

Jo Hender

M: 021 264 7559 B: 03 928 0469

E: jo.hender@bayleys.co.nz

BAYLEYS

VINING REALTY GROUP LTD, BAYLEYS LICENSED UNDER THE REA ACT 2008

Wakefield School

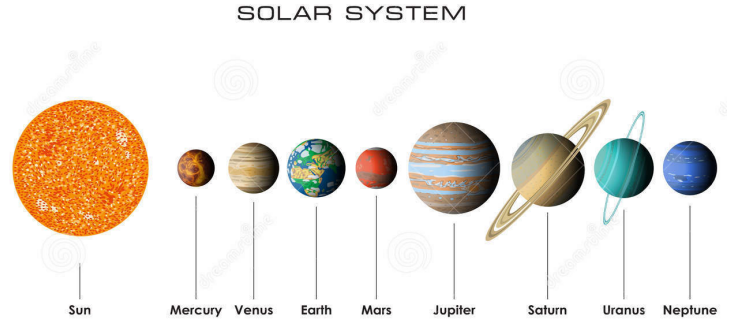
Toroa in Space

by Toroa, Wakefield School

Our literacy focus is space. We are asking questions that we are curious about and then researching answers using books and websites. We are learning how a contents page, glossary and index can help us quickly work out if the book has any information that might be helpful.

These are some of the questions we are curious about:

Why do we see stars in the shape of a star? *Alice*
What are stars made of? *Ryan*
How many moons are there? *Ella*
Why is Pluto the smallest planet? *Nevaeah*
How long does it take to fly around the Earth? *Jude*
How many planets are there in space? *Josh*
How do galaxies form? *Cooper*
Where do black holes come from and go to? *Jet*
Are there different dimensions in space? *Jack*
Why do you float in space? *Beth*
Why does the Earth spin? *Regan*
How did people first find out about space? *Phoebe*



We have the answers to some of our questions.

Are any planets made entirely of ice?

No, the planets in our solar system are made out of different things. The inner planets (Mercury, Venus, Earth and Mars) are small, rocky planets mostly made up of minerals. The outer planets (Jupiter, Saturn, Uranus and Neptune) all have solid cores of rock, metal and maybe ice, but they also have a thick layer of gas around them.

Morgan

What are shooting stars?

Shooting stars are not real stars, they're just small, hot, fiery rocks in the atmosphere. They burn up as they shine and fall, but for a moment, they look like stars flying across the sky.

Emma

How did the solar system begin?

The solar system began as a vast cloud of gas and dust.

Callum



Why do people call Pluto a planet?

People used to call Pluto a planet. In 2006, scientists stopped calling it a planet and called it a dwarf planet because scientists decided that it was too small.

Neviah

How come you cannot breathe in space?

There is no air in space. The higher you go, the less air there is to breathe. The temperature can be low enough to freeze a person to death.

Andre

How fast does light travel?

The speed of light is 299,792 kilometres per second. Nothing can travel faster than light. If you could travel at the speed of light you could go around the Earth 7.5 times in one second!

Aiden





FRIDGES • FREEZERS
WASHERS • DRYERS
DISHWASHERS • OVENS
RANGEHOODS

WHITEWARE SOLUTIONS LTD

For all your whiteware repairs in Wakefield, Richmond and the surrounding areas.

TIM LLOYD
79 Treeton Place,
Wakefield.

For service call: **027 685 5777** or **541 8877**



WAKEFIELD PHARMACY

the caring pharmacy



Join us on our **FACEBOOK** page and be in the draw to win our monthly prize.

Shop hours -

Monday 8.30am to 5.30pm - Tuesday 8.30am to 5.30pm - Wednesday 8.30am to 7pm
Thursday 8.30am to 5.30pm - Friday 8.30am to 5.30pm - Saturday 10am to 12pm

4 Edward Street, Wakefield - Phone 03 541 8418 - Fax 03 541 9100

www.wakefieldpharmacy.co.nz

Delicious Honey straight from the valley

Mountain Valley Honey brings you award winning honeys, harvested from the beautiful Marlborough Sounds and stunning remote areas of the top of the South Island. Our bees forage to bring you Manuka, Native Bush, Autumn Gold, Honeydew and Kamahi honeys to enchant your tastebuds.

Find us at: www.mountainvalleyhoney.co.nz

Email: info@mountainvalleyhoney.co.nz

Visit us: Every Saturday at the Nelson Market



Holistic Bowen

What is Holistic Bowen?

by Tanya Davey

Bowen is a gentle yet effective form of physical manipulation which can be done on a lightly dressed person.

It's name comes from the inventor Tom Bowen who practised for 35 years in Australia. When asked by a government inquiry about his success rate Tom estimated it to be 88%. Bowen is a rolling technique that activates the body to heal itself.

It was common in Tom's clinic for a person to leave the clinic in the same pain they came in with but he never worried as he knew the body would sort the problem itself.

Bowen works on the fascia which is throughout the body and runs over nerves, muscles and bone. The fascia supports and allows movement and reduces the impact on muscles doing everyday tasks.

Fascia imbalances can lead to a host of physical problems from chronic pain to a limited range of movement. It is only in recent years that they have realised how important the role fascia has in our bodies.

So if you have an injury or pain that nothing seems to improve, you may need fascia releasing.

Bowen is helpful for a wide range of conditions such as frozen shoulder, RSI and lower back problems.

Give me a ring to discuss your problem at 027 522 4390 or email me at tanyadavey44@gmail.com

RURAL POST

Contact Nick & Jackie Costley

For all your RD2 Wakefield postal needs, including

- Prepaid Bags
- Stamps
- Local freight from Wakefield, Dovedale and Tapawera.

Prescriptions from Wakefield.

Nick - 027 541 8581
Phone 541 8581

Target Shooting Wakefield



Contact : targetshootingwakefield@gmail.com
If you require any further information about coming shooting.

CONTACT : Dot Ashton 5418989 or 0275430529
If you require further information about coming shooting.

Club Night ~ Mondays from 7pm, range next to soccer rooms. Kids shoot first so they can get home on a school night. \$7 a card, all gear supplied and completely supervised. Come on down and give it a go, age 10yrs and beyond. Great sport for all ages that you can carry on with throughout your life. Even though winter is biting, the club room is warm and the humours hot. If you would like some more info or have any questions just contact us on the above contacts top of the page. Would be great to see some old faces back in the club as well as some new ones. Target shooting isn't only for the young ones us older ones can do it too. If it's something you would like to have a go at and become part of our little club please come along or give me a ring, details at the top of the page.

- Events June**
- 2nd Marlborough champs
 - 3rd Nelson open champs
 - 4th Champs on Saxton
 - 6th Association meeting
 - 7th NDC rd. 3
 - 13th 3rd divisional match
 - 16th Canterbury champs
 - 17th Coronation champs
 - 23rd South Island champs

- Events July**
- Ellesmere champs
 - 4th Association meeting
 - 7th Seddon district match
 - 14th Berthelsen
 - 14th Town v country
 - 19th NDC rd.5
 - 27th South Island AGM
 - 28th A & F match

ASHLEY CHAMPS 19TH MAY IN RANGIORA

MASTER GRADE:
Ian Inwood 95.2, 98.5, 97.4
A GRADE:
Sheryl Guyton 95.1, 95.0, 95.4
B GRADE:
Livy Guyton 96.3, 94.2, 97.4
David Baigent 96.4, 96.5, 95.4
Scott Green 90.2, 98.2, 94.4
C GRADE:
Dot Ashton 97.3, 94.3, 96.2
Clayton Anderson 91.1, 95.3, 95.3
Barry Green 94.3, 97.3, 94.4
BENCH REST :
Bev Inwood 190.12

Interschool competition:
2nd Waimea College Scott, Livy, Clayton

NORTH CANTERBURY CHAMPS 20TH MAY

MASTER GRADE:
Ian Inwood 96.4, 97.3, 97.3
A GRADE:
Sheryl Guyton 97.4, 94.4, 98.5
B GRADE
David Baigent 96.5, 98.3, 98.6
Livy Guyton 94.1, 93.2, 94.2
Scott Green 92.2, 96.3, 97.2
C GRADE
Clayton Anderson 84.0, 93.3, 94.3

Interschool competition:
2nd Waimea College Scott, Livy, Clayton

Nelson Champs Cont'd

D GRADE
Tony Carter 91.1, 90.1
John Mace 84.0, 86.0, 83.0
Athena mace 88.2, 85.0, 93.2
BENCH REST
Bev Inwood 96.4, 97.5

CHAMPS ON SAXTON 4TH MAY

MASTER GRADE:
Ian Inwood 195.13, 197.11
A GRADE
Sheryl Guyton 194.08, 191.04
B GRADE
Ricky Hovenden 196.10, 195.11
David Baigent 192.06, 196.11
Livy Guyton 192.07, 192.03
Scott Green 192.07, 190.08
C GRADE
Barry Green 95.03, 96.03, 95.04
Dot Ashton 96.04, 92.01, 96.02
D GRADE
Tony Carter 92.01, 96.02, 95.03
BENCHREST Bev Inwood 98.08, 100.04

NELSON CHAMPS 3RD JUNE

MASTER GRADE:
Ian Inwood 98.4, 96.5, 98.7
A GRADE:
Sheryl Guyton 96.3, 97.5, 95.4
B GRADE:
David Baigent 95.1, 97.3, 98.4
Livy Guyton 96.5, 91.1, 95.3
Scott Green 92.2, 96.3, 96.3
Ricky Hovenden 98.5, 99.5, 100.5
C GRADE
Clayton Anderson 94.1, 94.1, 93.2
Dot Ashton 94.1, 89.0, 96.4
Holly Gibbons 96.3, 94.2, 92.3
Barry Green 92.3, 96.2, 91.0

As you see we have all been super busy with shooting over the past few weeks, lots of travel up and down the country too.

We had good success with our open day, which continued on the Monday night with those that couldn't make the Sunday. We have a great group of school kids that are coming along regularly and sharpening up their shooting skills.

We also have a few adults that are giving it a go too and making great progress from sandbag into jacket and sling 😊

Welcome back to Shooting Ricky Hovenden, who lucky for us is now Wakefield based and with our club, you will see by his scores he's going to be a great asset to our little club.

Until next time

HAPPY SHOOTING

Town and Country Talk

Arthritis and Metabolic Diseases

by Brenda Halliwell, Vet

Does your pet have arthritis?

This cold time of year is when those stiff old joints can become more obviously painful. Sometimes we see stiffness especially after rest, difficulty on steps and getting into/out of the car, slowing down on walks. But often pets just do less – dogs will watch you go to the washing line rather than go with you and cats will stop jumping up to the windowsill or other favourite high spots.

NB Animals with arthritis almost never whimper, whine or complain about being in pain, so don't rely on this as a symptom. If your pet is limping, it is usually due to pain.

There is no cure but arthritic pain and inflammation can be minimised by managing your pet's weight, exercise and treatment.

Weight control – one of the most important things you can do for an arthritic animal is maintain their optimum weight. Extra kilograms are just more load on struggling joints.

Exercise management – Short, frequent walks on flat, soft ground will help maintain muscle mass and strength without high impact on joints. Swimming is great if it's not too cold!

Treatment options – there are many! A warm, comfy, well-padded bed away from draughts can make a huge difference. Massage, gentle flexion/extension of arthritic joints, acupuncture, good nutrition such as Hills j/d, nutraceuticals such as 4cyte and fish oils are all helpful. And of course, we can give anti-inflammatory medication and pain relief – these can transform an old pet's life. If you have a pet that's struggling on its legs, bring them in for a checkup and we can help you help them to have an enjoyable, pain-free life.

Winter and spring are the seasons when we see **metabolic disease** in our farm animals. This is a group of diseases which are caused by abnormal metabolism or an imbalance of essential nutrients in the body. Metabolic disease is serious and medical attention needs to be prompt.

Milk Fever

This is caused by low blood calcium. We can assume the majority of down cows encountered around calving are likely to have a Milk Fever component. Treatment is calcium borogluconate solution and is very effective if given promptly and correctly dosed. In ewes, outbreaks are often precipitated by sudden changes in feed, yarding or driving.

Grass Staggers

Is due to low blood magnesium and often occurs in combination with Milk Fever. Cows are usually down but more alert than Milk Fever cases, sometimes even aggressive. Cows should be treated with metabolic solutions containing magnesium and provided with ongoing oral magnesium supplements. In ewes it can be difficult to distinguish from other metabolic disease.

Ketosis or Sleepy Sickness

This is an imbalance between energy supply and demand. Cows having twins, in poor condition or with other complications such as mastitis are most at risk. Affected cows are often dull and weak, with an acetone smell on their breath. We give dextrose solution into the vein as it is not absorbed well under the skin. Oral drenching with Ketol twice daily for several days is also recommended. Sleepy sickness is very common in ewes and is seen as dullness, inappetance, apparent blindness, unusual posture, progressing to coma and death. Early treatment with Ketol is vital.

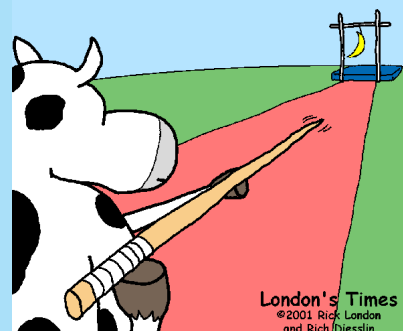
Important Tips for Giving Metabolic Solutions

There are many different solutions available and they are available to buy over the counter in the vet clinic. It is worth having a couple of bags or bottles at home in case you need them urgently. However, please familiarise yourself with how they work and only administer them if you have been taught how. Vets give some solutions directly into the vein but this is dangerous even fatal if you don't know what you are doing. Ideally metabolic solutions should be warmed to body temperature to aid absorption and reduce shock.

If you are in any doubt about why your animal is unwell or which treatment to use, it is best to call us ASAP on 5441200 at Richmond or 5418974 in Wakefield.



At the cow olympics ...



"...for all creatures great & small..."

Open Monday - Thursday 8.30-5pm

Consulting Hours

Monday afternoon with Brenda

Tuesday morning with Brenda

Thursday morning with Paula

Ph 541 8974

info@tcvet.co.nz * www.tcvet.co.nz

Edward Street, Wakefield

Head office 35 McGlashen Avenue, Richmond



544 1200 24 hours

Last Months Quiz Answers

by Derek Evans

1. What is the most common food allergy?
Nuts
2. What ancient roman buildings name means 'place for a giant'?
Coliseum
3. What game of chance is physically the most demanding for the loser?
Russian Roulette
4. In chess the opening move can be made by either a pawn or which other piece?
Knight
5. At what age can you officially marry in France?
Fifteen
6. Which country has mounted the most challenges for the America's Cup?
Great Britain
7. What animal is King Louie in The Jungle Book?
Orang-utan
8. Which sea creature sometimes eats itself if it becomes unduly stressed?
Octopus
9. What is this report pertaining to? ["A new study published in Proceedings of the Royal Society shows that females who eat their male partners after sex produce more eggs than those who don't".]
Praying Mantis
10. The blue cornflower is the French equivalent to what in England?
The Red Poppy (Remembrance Day)

Tasman Bay Chiropractic
www.tasmanbaychiropractic.co.nz

REACH YOUR HEALTH GOALS
Help your family move well, feel well and live well



Monday-Saturday
03 544 4554
64 Oxford St, Richmond



Nelson Travel Broker
your journey starts here

*locally Owned
& Operated*

Phone: 03 541 8417 or 021 545 799
Email: sue@nelsontravelbroker.co.nz

Check out what my clients have to say at

www.nelsontravelbroker.co.nz

A proud member of Travel Connections NZ Limited.



all about you
BEAUTY THERAPY

Stockist of
dermalogica[®]
Skin Treatments

dōTERRA[™]
AUTHORISED RETAILER

dōTERRA[™]

Support your health the natural way as nature intended with these essential oils, health supplements, hair, skin care and household cleaning products.

CPTG Certified Pure Therapeutic Grade



CPTG Certified Pure Therapeutic Grade

dōTERRA[®] CERTIFIED PURE THERAPEUTIC GRADE ESSENTIAL OILS are 100% pure, natural, aromatic compounds carefully extracted from plants. They do not contain fillers or artificial ingredients that would dilute their active qualities and are free of contaminants such as pesticides or other chemical residues.

As important as it is to keep contaminants out of our oils, assuring the presence of their active compounds at the right levels is necessary to guarantee safety and effectiveness. Many oils claim to be therapeutic grade, and some may be pure, but few are subjected to rigorous testing standards for chemical composition. dōTERRA[®] Certified Pure Therapeutic Grade essential oils are cross tested using Mass Spectrometry and Gas Chromatography to ensure both the extract purity and composition potency of each batch.

dōTERRA[®] works closely with a global network of leading essential oil chemists and growers to select botanicals of the correct species, grown in the ideal environments, and carefully harvested at the right time. The aromatic compounds of the plants are skillfully extracted by experienced distillers and subjected to chemical analysis to ensure purity and composition. dōTERRA[®] CPTG Certified Pure Therapeutic Grade essential oils represent the safest and most beneficial oils available in the world today.

1 Bird Lane, Wakefield
www.allaboutyoubeauty.co.nz

Phone: 541 9510
Mobile: 027 6143 298

Certified Pure Therapeutic Grade

Community Notices

WILLOW BANK HERITAGE VILLAGE

Willow Bank Heritage Village is open the first Sunday in the month (September - May)

FREE ENTRY

The Victorian Cafe, Burger Bar and Milkshake Bar are fundraisers for the Willow Bank Heritage Village project.

We are serving food from different time eras and dress-up accordingly.

We encourage people to come dressed-up (Victorian/Steampunk, 1960s...) and have fun.

Stroll along the village street and visit the many different stores and establishments, each one an echo of New Zealand's past.

Willow Bank Heritage Village in Wakefield is part of Destination Wakefield.



WAIMEA AREA QUILTERS

**OUR NEXT MEETING IS OUR
"MID-WINTER RETREAT"**

FROM 5.30pm FRIDAY 13th to SUNDAY 15th JULY
AT

PARETAI LODGE, 129 LEE VALLEY RD, BRIGHTWATER

**OUR TUTOR ON 'SCRAP QUILTS' WILL BE JOYCE MC CULLY
YOU CAN OPT TO DO YOUR OWN THING IF YOU WISH**

IT IS ESSENTIAL YOU BOOK A PLACE AT THE RETREAT

**Contact to book is Margaret Robinson on
547 5036 or 021 058 8216**

Please contact Marilyn for instructions on 541 8435

Please bring the following: Yourself! Your machines and sewing gear, any Show and Tell items you may have, shared supper for Friday and some lunch for Saturday. Dinner is at Wakefield Hotel – Husbands/Partners welcome at your cost.

Cost \$20.00 per night or \$6.50 days only.

New ladies always welcome to our friendly group! Please contact below for information.

Club Contact: Marilyn on 541 8435, email: gibbs@ts.co.nz

KEAS	CUBS	SCOUTS	VENTURERS	ROVERS	LEADERS
------	------	--------	-----------	--------	---------

JOIN THE ADVENTURE NOW!

Join Keas, Cubs or Scouts now!

Boys and girls get together weekly, make new friends and develop new skills in an adventure based programme. It's a fun adventurous challenge that's been going on every week for more than a hundred years.

Want fun & adventure? Come along and get some!

Come for three free introductory sessions.

Keas - Tuesdays 5.30pm-6.30pm
Cubs - Wednesdays 5.15pm-6.45pm
Scouts - Mondays 6.15pm-8.30pm

Wakefield Scout Group
Treeton Place, Wakefield
Email: wakefieldgroupleader@gmail.com
Phone: 027 7593 006

SCOUTS
New Zealand scouts.org.nz

Wakefield School PTA presents

QUIZ NIGHT

FRIDAY 27th JULY 6.30-10.30pm

Wakefield School Hall

\$120 per TABLE of 6

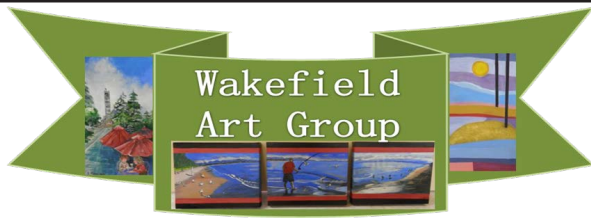
BAR

RAFFLES

PRIZES

**LEAVE THE DATE OPEN
MORE INFO TO COME**

Community Notices



Wakefield Art Group

*Everyone welcome. All levels of interest.
Our group has been meeting weekly since July 2012 during school term.*

Every THURSDAY of the School Term
9.30 am – noon
Wakefield Village Hall – Supper Room
\$4 per session - cup of tea/coffee included

For more information contact:
Fiona Ph: 027 767 7909
E: kahurangicottage@gmail.com
or Sonja Ph: 541 8176
E: sonjal@ts.co.nz

Dates for Wakefield Art Group are:
July 5, 12, 19 and 26
Aug 2, 9, 16, 23 and 30

WAKEFIELD ANGLICAN COMMUNITY LUNCHES

The monthly community lunches will recommence on Thursday February 15th at 12 noon.

They will then be held monthly on the 3rd Thursday of each month until November.

All welcome.

If you wish to attend, please phone Caroline 5418491 by the previous Monday if possible.

Come and enjoy a social hour of chat over a meal.

A small donation is appreciated to cover expenses.

WAIMEA PLUNKET PLAYGROUP

The Brightwater Community Anglican Church,
Waimea West Road, Brightwater

Time: 9.00 – 12.00 noon

Day: Wednesday morning

Cost: FREE

RAW FOODS

Meet up for a monthly shared potluck lunch with people interested in raw food.

Meet like-minded people to learn and encourage ourselves in this lifestyle.

We meet at people's homes.
No cost apart from creating a raw food dish to share.

Ring Sally for details: 021 170 9443 or 548 8403.
Meetings are generally held on the last Sunday of the month, 12.30 to 2.00 pm.

Wakefield Craft Group

Come and join the ladies Craft Group held on Wednesday mornings in the Fire Brigade Supper Room Pigeon Valley Road 9.00am - 12pm

Bring any project - sewing, knitting, crochet. Learn to knit or crochet or just come for a look and join us for tea, coffee and company. Small donation

For more information phone Judy on 5418342

BETTER THAN BEFORE GROUP

Small group, monthly meetings

Aim: to set and review individual goals - also to share useful knowledge to motivate ourselves. In this way, we move towards overcoming negative habits and regret - instead creating habits of health, enjoyment, happiness, with pride in ourselves, our body and mind, and how we spend our precious time.

Enquiries phone Kathy ph 03 265 5066.
No cost. All welcome.

MAINLY MUSIC

Wakefield St Johns Anglican Worship Centre Monday's 10.00am. Cost \$3.00 per family. This is a time for parents and children to enjoy music, song, dance and lots of laughs.

Any queries please phone Wendy Milson 544-5494.

MEALS ON WHEELS DRIVERS WANTED

We need drivers to do deliveries in the Wakefield and Brightwater area on Mondays.

Meals are picked up from The Homestead Rest Home in Wakefield at 11am. Delivery takes approximately 1 - 1 1/2 hours. Drivers are rostered on a fortnightly rotation.

We also have relief drivers to fill in when rostered drivers are unavailable, so if you don't wish to do a regular day, this may be an option for you.

This voluntary service is greatly appreciated by the recipients, supplying them with good, healthy meals, and enabling them to stay in their own homes.

If this sounds like something you would like to do, please contact Heather on 541 8151.

Community Classifieds

WANTED

Large quantity of stone free clay for McGazzaland.
Ph 0272 820 838

FOR SALE

One single bed base, very good condition.
\$30.00 Ph 021 0733 655

FOR SALE

SBL secondary school bus ticket - zone 5, suitable for travel from Wakefield to both Nelson Colleges.
Only 9 trips still available on ticket hence \$25 price - call Mandy 541 8887

GRAZING WANTED

For two ponies.
Very responsible and conscientious owners. Must have good fencing and water. Ponies checked daily and paddocks cleaned and well maintained.
References available if required.

Please contact Candace:
0210 222 4748 or
candace2b4@gmail.com

AVAILABLE

Tennis court astro turf artificial grass rolls in good condition.
Various sized large size rolls.
Removal at own cost.
Phone Karen 541 9242 or text 021 106 5910

WANTED

Spray free straw.
Will buy spoiled straw.
Spray free clover or organic mulch.
Can buy large quantities.
Phone Brooke 03 522 4939

JOBS WANTED

16 year old girl fundraising for Africa school trip with World Challenge.

Available for baby sitting, lawn mowing, dog walking, wood stacking and other odd jobs considered. Quite good at helping assemble flat pack cupboards.

Phone Caitlyn Scott on 541 8867.

WANTED

Single male non-smoker seeking single/double room, bedsit-shared facilities, in Wakefield - Brightwater area.
Contact Andy on 021 0287 2371.

WANTED

Motorbike parts - any parts for 1950 to 58 AJS or matchless 350 to 500 cc singles.
Contact Ross 541 8447 or 027 782 5189.

FOR SALE

Single mattress. Natural Rest brand (made in Nelson) plus Woolrest under blanket. Good condition.
\$50. Ph.541 8950 evgs.

FOR SALE

Baleage, big rounds, this years, well made. One or two unit loads.
Phone Louise Baker 522 4909 - Tapawera

WANTED

Fadge holder/stand for wool fadges
Phone/text Chris 021 90 0832

BABYSITTER

Experienced 14 year old babysitter available after school, evenings and weekends.
Reliable and trustworthy. References available.
Please phone Jessie on 027 358 5049.

WAKEFIELD BOWLING CLUB

Scrap metal.

Wakefield Bowling Club is willing to collect any old metal, wiring, whiteware, car batteries, etc.
Please phone Trevor on 5418855.

WANTED - ROVING REPORTERS

Window on Wakefield are looking for more volunteer roving reporters.
Please contact us on
windowonwakefield@gmail.com



Can we celebrate
your
special event
or
help remember
someone dear
to you?

Please contact us at
windowonwakefield@gmail.com
or ring 541 9005

FOR SALE
WANTED
FREE
HELP

**WE NEED YOUR
FOR SALES
WANTED
OR HELP REQUESTS**

**PLEASE CONTACT
541 9005
SOME LIMITATIONS APPLY
PLEASE ASK**

Community Directory

Citizens Advice Bureau
548 2117 - 0800 367 222

Rutherford Memorial Hall
658 Wakefield-Kohatu Highway, Foxhill
Bookings and enquiries:
Sue White 027 474 6324
Hire Rates & Conditions:
www.lordrutherfordhall.org.nz

Pigeon Valley Steam Museum
Alan Palmer 027 319 7427

Rural Ramblers
Carolyn Mason 541 9200

Spring Grove Drill Hall
C Stratford 542 3992

Totaradale Golf Club
Jacquie 541 8030

Wakefield Anglican Church – St Johns
Meet Sun 9.00am; 10.30am
Rev. Allan Wasley 541 8883

Wakefield Community Library
Wendy Gibbs 541 8490
Pam Dick 541 8392
Hours - Tues 10.30 -11.30am
Friday - 2.30 - 4pm
Excluding Public Holidays

Wakefield Football Club
Chris Olaman 027 541 9029
David Emerson 027 256 0531

Wakefield Medical Centre
541 8911

Wakefield Pharmacy
5418418
doug@wakefieldpharmacy.co.nz

Wakefield Playcentre
Contact: 541 8866

Wakefield School
Edward Street 541 8332

Wakefield Scout Group
wakefieldgroupleader@gmail.com
Louis Hornell 027 759 3006

Wakefield Toy Library
Saturday 9.30-11.30am
Liz Ashburner 541 9453

Wakefield Volunteer Fire Brigade
DCFO Fritz Buckendahl 027 224 4162

Justice of the Peace
Katie Greer
896 Wakefield/Kohatu Highway
Ph 021 547 756

Country Players (Drama)
Jen Amosa 541 8139
enquiries@countryplayers.org.nz
www.countryplayers.wordpress.com

Nelson Vintage Engine & Machinery Club
Allan 027 319 7427

Pinegrove Kindergarten
03 542 3447

Rural Women
Dawn Batchelor 542 3628

St Joseph's Catholic Church
Sun 8am, Thurs 9.30am
Parish Priest Seth Pijfers 544 8987

Taoist Tai Chi
Deb Knapp 022 083 9332

Waimea Sheepdog Trial Club
Colin Gibbs 541 8435
gibbs@ts.co.nz

Waimea Area Quilters
Sue Burrowes 541 9689 or 027 364 0773

Wakefield Book Group
Mahala White - 541 8933 or
Chrissy Harris - 541 9596

Wakefield Bush Restoration Society
Doug South 541 8980

Wakefield Plunket Volunteers Group
Wendy Wadsworth 541 9272

Plunket Nelson Area Office
For appointments etc 539 5200

Wakefield School/ Community Swimming Pool
Karyn Young 021 112 4203
Libby Thomson 027 541 8202

Target Shooting Wakefield
targetshootingwakefield@gmail.com
Contact: Dot Ashton
541 8989 or 027 543 0529

Wanderers Sports Club
542 3344

Focus Wakefield
focuswakefield@gmail.com

NZ Postcard Society Inc.
Doug South 541 8980

Richmond Lions - Wakefield Rep
Ivan Burrowes 541 9689

Spring Grove Church of Christ
Meet Sundays 10am
541 8011

Waimea South Historical Society
Arnold Clark 544 7834

Wakefield Bowling Club
Margaret Eames 541 8316

Wakefield Brightwater Book Club
Sue McAuley 544 7325
sue.mcauley@ncc.govt.nz
Meets last Wednesday evening
of every month

Wakefield Community Council
Sonia Emerson 541 9005

Wakefield Indoor Bowls Club
Ren Olykan 541 8275

Wakefield Preschool
Contact: 541 8086

Wakefield School PTA
ptawakefield@gmail.com

Wakefield Tennis Club
Ngairie Calder 027 279 9938
www.caldertennis.co.nz

Wakefield Village Hall
Rose & Richard Shepard
shepard@thistle.net.nz
027 406 4154

St. John's Worship Centre
Nigel Massey 541 8857

Window on Wakefield
Articles & Content - 541 9005
Sonia Emerson

Window on Wakefield
Advertising - 541 9641
Genie & Lindsay Bradley

AED DEFIBRILLATOR LOCATIONS - AVAILABLE 24/7

Wakefield Four Square, Highfield Farm, Kohatu Flat Rock Cafe, Old Tadmor Store, Dove Nursery, Corner of Thornee Road & Wins Valley Road, 29 Moonlight Road Glenhope, Corner of Totara View Road and Kilkenny Place, Southfuels Spring Grove, Belgrove Cafe and Bar, Lake Rotoiti Fire Station

CIVIL DEFENCE - WAKEFIELD AREA COMMUNITY RESPONSE

In the event of an emergency, your first task is to ensure the safety of your own home, family and neighbours. Once you have attended to this, if you have **specialised skills/ equipment**, and/or feel you can assist others; or require assistance yourself, please make your way to the Welfare Centre which will be at the St Johns Worship Centre in Edward Street [unless notified otherwise].

Please note that the existence of a Welfare Centre does not absolve each individual from their **responsibility to be personally prepared**. You should ensure that you have your own **survival kit** in place, and that you are able to be **fully self sufficient for at least three days**.

In the event of an emergency, for urgent public messages, tune in to:
More FM 94.1, Classic Hits 89.8, Fresh FM 95.4



NELSON TASMAN
EMERGENCY MANAGEMENT

GROUP

I've sent high commissions **PACKING**
with our **UNBEATABLE FLAT FEE**



WAKEFIELD

6 Fenn Place

\$690,000+

Luxurious home that overlooks farmland and enjoys a long view to the Richmond ranges. Special features include a stunning entertainers' kitchen, a cosy pellet fire and HRV for the winter months, LED lighting, underfloor heating in the bathrooms, and an internal vacuum system. 3 bedrooms, 2 bathrooms, an office or 4th bedroom, and 2 living areas are spread over a spacious 230 square meters.



WAKEFIELD

44 Arrow Street

\$587,000+

Quarter acre section beautifully landscaped and fully fenced, with a good sized lawn for the kids to play and established berry and orchard groves. Partly modernised, solid 1960s character bungalow with still some areas to add your touch and add value. A council compliant 20m2 sleepout to use as the 4th bedroom or studio. Outdoor entertaining area. And 125 square meters of garage and workshop space.



WAKEFIELD

10 Mayer Crescent

\$698,000+

5 bedrooms - 4 double and a single/office, 2 sunny living areas heated by a large logburner in winter, with fabulous flow through bi fold doors to a patio that overlooks the garden and through the back boundary fence to the farmland beyond. Twin garaging and extra off street parking, and being tucked away at the end of a quiet cul de sac ensures your privacy.



Thank you for your business, when you support me you are supporting the following local organisations I sponsor:



Wendy Pearson M 021 567 722 P 541 9667 E wendy.pearson@tallpoppy.co.nz

Bulsara Ltd REAA Licensed MREINZ

Licensed Real Estate Salesperson (REAA 2008)