



window on **wakefield**

Your Local News

Community News for the Wakefield Area

Happy Hippies by Caraline Dyson

Did you wear a flower in your hair at Wakefield Market last month? You may have felt out of place if you just went down there wearing your usual clothes. Young people, 'young at heart people' and 'young enough' all gathered on June 14th to celebrate ten years of monthly markets on our village green. The theme was 'Happy Hippies' and with colourful attire, fabulous music and an array of products on sale, it was a wonderful occasion.

Each month the market gives local groups the opportunity to fundraise and showcase their activities to the rest of the community. Individuals are welcome to recycle their unwanted toys, books, garage sale items etc. There is something for everyone and anything can be offered there, either for sale or to share. It is different every month, but the celebratory atmosphere last month was extra special.

Among the peace loving placards people sang along with the live music and filled up on delicious free soup. Regular stall holders chatted with newcomers and everyone seemed to go home with something new. Organiser Jean Southward invited villagers to come along and 'go with the flow' and that is just what people did. Well, Villa Grove olive oil flowed and some people sold us what they had grown, and everyone said how ten years had flown!



Peter Mellor (mandola), Adie Leng and Stephanie Buck (accordions). Guitar, tenor banjo, ukulele and bodhran waiting to be played. Jenni Komarovsky took a break from playing to take the picture! "We used to play in a band called The Scattered Islanders but have become somewhat scattered in recent years. The 10th birthday celebration was a perfect excuse for us to get together and enjoy some music again."



Nelson Travel Broker
your journey starts here

locally Owned & Operated

Sue Ketel - Your Local Travel Expert

Ph: 03 541 8417 or 021 545 799
E: sue@nelsontravelbroker.co.nz

Cycle cruise of Dalmatia - Croatia

TIMES TRAVEL \$999*pp

7 nights onboard a traditional sailing ship

Includes breakfast, 1 lunch and 6 dinners. Professional guide and bicycle rental *Conditions apply.

www.nelsontravelbroker.co.nz

AIR NEW ZEALAND **Holidays** TRAVEL BROKER

WINDOW ON WAKEFIELD

How it works...

Window on Wakefield is produced and published by Focus Wakefield, a subcommittee of the Wakefield Community Council. All businesses advertising in this publication incur a cost for the advertising space allocated, depending on the size and location of the advertisement. The funds raised from this advertising are used to cover the costs of printing Window on Wakefield. No parties are paid for the time involved with editing, coordinating and publishing this paper. It is the intention that if surplus funds are raised from advertising, that these will be held in a separate bank account to be used for other community projects. The bank reconciliations and financial reports related to this account will be made available to any person who wishes to view them.

Content...

Window on Wakefield is a community newspaper, and as such, we look forward to having articles and content contributed by our community. If you wish to submit a one off article, or suggest some regular content, please make contact with Sonia on 541 9005 or email windowonwakefield@gmail.com and read the Terms and Conditions below.

We try to ensure information published is truthful and accurate, but do not check the facts of the articles and therefore cannot attest to their validity. While all reasonable care is exercised, we do not accept liability for any loss whatsoever incurred through our errors, acts or omissions in relation to the content of an article, or for any consequences of readers' relying on the information published. Opinions expressed by contributors do not necessarily represent the views of the Focus Wakefield group, nor are they necessarily endorsed by the Editor or Publisher.

Advertising...

If you wish to advertise in Window on Wakefield, please make contact with Genie or Lindsay on 541 9641 or email enquiries@wakefieldprint.co.nz and read the Terms and Conditions that will be provided on the rate card.

TERMS AND CONDITIONS REGARDING PUBLISHING OF CONTENT

- a. All articles and other content submitted for publishing must disclose the author's name or where the article/content is contributed by a community group, then that community group's name.
- b. All images should be provided to us in a high quality PDF format. We take no responsibility for the quality of reproduction for images that are not supplied to us in this format.
- c. If you wish to make changes to an article or content already submitted, please ensure these are communicated to us before the relevant deadline date.
- d. When you submit an article or other content for publishing you:
 - agree that the submitted material and/or images can be reproduced by the Editor or Publisher at any time without your prior approval
 - agree that all photographs submitted for publishing are provided free of charge, and the approval to print has been obtained from any persons shown in the photo - this is the responsibility of the person submitting the photo
 - acknowledge that all material is held by us at your risk and is not insured by us. Material will only be returned on request and may otherwise be destroyed by us
 - warrant and undertake that no statement, image, representation or information contained in your supplied article or content:
 - * is or is likely to be misleading or deceptive;
 - * is at all defamatory, in breach of copyright, trademark or other intellectual or industrial property right;
 - * is otherwise in breach of the Copyright Act 1994, Defamation Act 1992, or any provision of any Statute, Regulation or rule of law.
- e. We reserve the right to decline the publication of any article or any content whatsoever on any grounds that we in our absolute discretion see fit.



Jill O'Brien
R D 1 Wakefield
Rural Mail Contractor
FOR ALL YOUR MAIL NEEDS
Stamps, Parcels, Freight
Phone 541 8963
Mobile 027 324 2126

DID YOUR BUSINESS MISS OUT THIS TIME



DON'T DESPAIR
WE HAVE SAVED
A SPOT FOR THE NEXT
PUBLICATION
JUST FOR YOUR BUSINESS

Give us a call
541 9641
or
Email
info@wakefieldprint.co.nz

NEXT EDITION

Due out the first full week of each month

All Advertising to be submitted by the 20th of the Month prior
All Content to be submitted by the 23rd of the Month prior
For Advertising please contact Wakefield Print Ltd 541 9641
For Content please contact All Accounts Matter Ltd 541 9005



MOUNTAIN VALLEY HONEY®



Mountain Valley Honey is locally owned by Murray and Nicky. Our bees forage for honey in the Marlborough Sounds and Mt Richmond Forest Park. Try our Manuka, Honeydew, Autumn Gold, Clover, Kamahi and Native Bush Honey's

Find us at
www.mountainvalleyhoney.co.nz

Painter



Interior, Exterior & Wallpapering

For a Free Quote
Phone Peter Thompson
027 444 93 64
A/H 03 541 9678

7 Hunt Tce Wakefield

Wakefield Market Days

"Mid Winter Xmas"
at Wakefield Market
12 July, 9am – 1pm

To sing to the tune of
"Rudolph the Red-nosed Reindeer"

Last one was "Happy Hippies"
local people came in droves
Our Market's for community
And here is how "we knows"

July's Mid Winter Xmas
Father Xmas thinks the same
Come join us on July the 12th
Xmas is our Market's name

Have a piece of Xmas cake
checking out our stalls
Then families for a home so bright
!!!!!! Make your FREE choice
of XMAS LIGHTS !!!!!!! !!!!!!!

All that we are asking
As you shout out with glee
Wakefield's Market on July 12th
going in my diary!



News from Wakefield School

Trip to the Rubbish Dump and Recycling Centre

by Ethan and Paige (Year 5)

Recently, a few lucky people from Totara Rua syndicate went to Eve's Valley Rubbish Dump and the Richmond Recycling Centre. The trip was to help us learn more about rubbish and recycling, and be better Kaitiaki of our environment.

We packed our bags and headed for the recycling centre. In the recycling centre we saw heaps of boxes for different recyclable things. We saw an area of recyclable batteries, recyclable cardboard, recyclable tins and machines squashing large piles of glass. We saw other machines crushing some of the other recyclable things. I thought that it was good that they had a recycling centre because otherwise the massive piles in the dump would increase.

Then we moved on to the Eve's Valley Dump. This isn't open to the public so I guess we were lucky to go there. When we arrived we smelled the smell of horrible methane gas that came out of all the rubbish. It was revolting, (and I am not saying that to make this interesting. It was seriously revolting!), and I could barely breathe. I wondered how the people there could cope with it.

As we walked around we could see a massive pile of rubbish, with birds hungrily diving over the rubbish. As soon as I could make my brain listen and not be too overcome by the rubbish, I heard the hill we were standing on was also made entirely out of rubbish and dirt. The lady told us the methane gas is not good for the environment and we also learned that they flatten some of the rubbish to keep the birds from eating it. She also told us if they continue growing the dump, then they will have to cut down a massive amount of beautiful trees nearby, homes for the birds.

As I walk down the hill I think it's sad and disgusting that all our rubbish is affecting the ozone layer, the air we breathe and heaps of other things that aren't good, I think I should get this message out to other people. That's why I am writing this report; to make people more careful about what they put in the bin that will eventually go to the rubbish dump. So think, can it be recycled or reused before you just throw it in the bin.



Tree Planting

by Aria (Year 5)

On June 20 some of Matai Rua syndicate and the Enviro Committee from Wakefield School went down to Faulkner's Bush. It was to celebrate National Arbor Day.

There were plenty of trees to plant. We managed to plant over 200! Wow! There were mud piles everywhere from people digging holes and trying to fill them in. There were all types of trees eg Pittosporum, Coprosma and Cabbage trees. The reason we planted the trees was to protect the trees that are already there. Now we can watch our trees grow every time we go to Faulkner's Bush.

We all had lots of fun getting covered in mud. It was a great experience for everyone and for some kids their first experience of planting a tree.

New Furniture

by Emma (Year 5)

At Wakefield School Matai Tahī and Rua syndicates have bought some new furniture for their learning spaces. They have ordered it from an online website called "Furnware". Rooms 3, 4, 5, 13, 14 and 15 have bought \$6,000 worth of furniture.

There is an exciting new curved teaching whiteboard table in space 15 that you can write on and it will rub out! Each class has also got two leather, curved, squishy, comfortable seats to sit on, one blue and one green. They also have five different coloured, round cookie pads (that look like pancakes) per class, made out of another leathery material.

Sue McLaren the deputy principal said "I am looking forward to using the whiteboard table to support the students learning." They are so lucky!



News from Wakefield School

Wakefield School Cross Country

by Ava (Year 5)

On June 13, there was a nail-biting and breath-taking event! It was the school cross-country. The whole of Wakefield School participated and it was held in the enormous Faulkner's Bush which is right beside the school.



The races were by year groups. First the youngest kids zoomed off. The easiest track was just one lap going around the field. This was for years two and under. The track for the year 5s and 6s was exciting, but annoyingly hard, because it had some rough ground and steep parts.

One of the problems was that it was really, really hot! There were lots of red-faced children and cheering adults.

The year 5 and year 6 races were the most entertaining. Dayna took out first place for the year 5 girls and Justin was the fastest boy. "I was happy and very proud of myself," commented Dayna, "even though the mud kept splashing on me." Kerby and Dion were the Year 6 winners.

I learned that winning isn't everything. It really only matters if you finish the course and try your best. I felt like I could maybe have done better but I had still tried really hard. Mrs Fensom, one of the organisers, said "I was inspired by all the enthusiastic runners".

We have the regional cross country coming up soon for years 4, 5 and 6. Good luck to all our runners.

Wakefield School PTA

The Wakefield School PTA would like to sincerely thank our fantastic sponsors who helped to make the 2014 Quiz Night such a success. We hope that you will support them in the same way that they support us:

MAJOR SPONSORS

Grant Chaney - Ray White Real Estate

Wendy Pearson - Heyward Realty

Mechanised Cable Harvesting Ltd

PRIZES, PRODUCT AND OTHER SPONSORSHIP

Alpine Lodge, Chateau Rhubarbe, First NZ Capital, Mountain Valley Honey, NBS, Queen St Fruit & Vege, Sarbies, Sprig & Fern Brightwater, Tohu Wines, Town & Country Vet, Wakefield 4 Square, Kono Beverages, Wakefield Auto Services, Wakefield Health Centre, Wakefield Pharmacy, Wakefield Physio, Wakefield Trading, Wakefield Villa Tearooms, Wooden Spoon Café, Moutere Community Centre, Nelson Travel Broker - Sue Ketel, All Accounts Matter, Abel Tasman Sea Shuttles and Wakefield Village Hall.

TABLE SPONSORS

A1 Concrete Pumping, Antidote Appliance Repairs, Carter & Sons Concrete, First NZ Capital, Wakefield Bakery, Lu Mu Ru, Mountain Valley Honey, Nelson Travel Broker - Sue Ketel, Purr-fect Retreat Cat Motel, Queen St Fruit & Vege, Shapers Hair Salon, Slightly Different, Smythes Lawyers, Southfuels Spring Grove, Town & Country Vet, Wakefield 4 Square, Wakefield Auto Services, Wakefield Bowling Club, Wakefield Physio, Wakefield Quarry, Wakefield Villa Tearooms, Wendy Pearson, Wisteria Cottage, You and Your Dog, and Programmed Property Maintenance.

We would also like to thank all those lovely parents who provided a plate for supper, Bruce Puklowski for all your hard work and the 21 teams, or 126 people who turned up on the night and gave it their all. **A huge thank you again to everyone involved in the Quiz Night.**

Lynda's Aerobics/Pilates Classes Term 3, 2014

St John Worship Centre, Edward St, Wakefield.

A new 10-week term starts Thursday July 24th - ends Sept 25th

We're staying with a 9.15am start for the third term.

Thursdays 9.15am - 10.00am

followed by Pilates 10.05 - 10.55am

You can do either or both classes.

Aerobics \$70.00 for the ten-week term.

Pilates \$70.00 for the ten-week term.

Discount for both sessions - \$120.00 (\$20.00 discount)

No special skills, gear or fitness levels required for either class.

New folk are most welcome - we are a friendly bunch and usually head off for coffee after Pilates.

Please phone Lynda 5432268, txt 027 222 1491, email lynda@hht.co.nz to book and for details. Classes are on a per-term basis, no casuals sorry. If you commit for the term (and pay!) you are much more likely to come, then you'll get results. If you have to miss a class you can truck on over to Mapua and make it up on a Wednesday or Friday.

The Adventures of Uncle Harry and Hardtop Farm

by Peter Verstappen

Episode 8: Aaron Cruden Goes Ballistic

Gladys stamped into the kitchen, "those thieving, blimmin' rats have been at my eggs again!" she stormed. "If this goes on they'll be stealing the chooks next."

Harry sighed. "All right, Glad. I'll put some baits out."

"And poison my chooks? You'll do no such thing, Harry Clout! No, it's shooting or traps for those vermin."

"Sounds like a job for young Sam."

The following day Harry was working in the toolshed when he was hit with a sudden spray of cold water. Startled, he spun round and slowly raised his hands above his head. Confronting him was a pocket-sized commando brandishing a pump-action water pistol.

"Sam, you little blighter! That's a poor way to announce yourself."

"That's one-nil to me, Uncle Harry. Anyway, it's the holidays, Mum told you I was coming for the week."

Sam was Harry's great-nephew, ten years old and skinny as a waif. He loved mucking around on the farm but his real passion was hunting.

"We've got a special mission, Sam," Harry lowered his head conspiratorially.

"Cool!!!" Sam's eyes shone.

"Not cool, Sam. Nasty. Rats."

"Tough customers, Uncle Harry?"

"Yep, and lots of them, Sam."

"Then it's a good thing I brought my secret weapon."

Sam hitched a small pack off his back and reached a hand into it.

"Uncle Harry, meet Aaron Cruden."

He pulled out a half-grown ginger cat as scrawny and under-sized as himself. The cat swung in mid-air, his paws swatting at Sam's wrist.

"I brought him as my back up, Uncle Harry."

"He's about as good looking as his namesake, but he'll need to put on some weight before he can take on those rats."

After dinner that evening Harry was in the kitchen loading his .22 when Sam burst in carrying a spear fashioned from a long piece of dowling with a four inch nail stuck in the end. "Those rats won't know what hit them!" he whooped. They set out towards the big old henhouse, Aaron Cruden scampering behind.

In the henhouse the chooks huddled on their wooden perches, muttering in their sleep. Harry shone his torch into the rafters.

"The rats will've made nests in the sarking," Uncle Harry whispered to Sam. "We'll get up there and root them out."

Harry crept past the sleeping chooks and climbed up into the low ceiling space.

He crawled forward on his stomach, following the beam of his spotlight, the air thick with dust and the smell of feathers. Edging along a rafter his spotlight caught a rat dropping from the roof joist. It fled into the darkness before he could take a shot at it.

He was lining up another when Sam's spear whistled past his nose and embedded itself in a rafter. "I got him Uncle Harry!" Sam was bouncing excitedly on the narrow plank.

Harry's torch beam lit up a large rat fastened to the rafter by the point of the still-quivering spear. "Hell, Sam, you just about pinned me! Nice shot, though."

At that moment there was a thud in the darkness ahead and Harry's torch lit up the biggest rat he'd ever seen. Harry was stunned, this creature was enormous, and far from being afraid it actually started towards him as if on attack. "Look at that monster!" yelled Sam. He jumped forward to retrieve his spear, lost his footing on the narrow rafters, crashed through the ceiling and disappeared into the henhouse below, knocking Harry's rifle off the rafter with him. Harry stared into the face of the huge rat and gulped.

Suddenly a small ginger streak shot past him and hurled itself at the monster rat - Aaron Cruden had launched into battle. The tiny cat and the enormous rat wrestled along the narrow rafter until, with a yowl, they followed Sam into the middle of the sleeping hens below.

The hens erupted in an explosion of feathers and squawks but through the chaos Harry watched the battle until the rat, rolling to his feet, shot out the door and into the night with Aaron Cruden clinging to his back.

Harry climbed down and found Sam unharmed. As they walked back across the yard there was a sudden scream from the house and rushing into the kitchen they saw Gladys staring, horrified, at the floor.

There, under the table, was Aaron Cruden, covered in blood and dirt, his fur torn and one ear practically chewed off. Beside him lay the long grey tail of the giant rat, torn off at its root.

"Oh, look at the poor little cat!" exclaimed Aunt Gladys, "he must have a terribly sore ear."

"Never mind his ear," chuckled Uncle Harry, "that rat must have a terribly sore backside."



WAIMEA ANGLICAN SENIOR CARE

by Nicola Berthelsen

Dates to put in your calendar

Not to be missed, the **Mid Winter Christmas Dinner** for seniors.

Friday the 25th July at 11.30am, St Paul's Community Church Hall. Cost is a donation, RSVP by phoning 03 542-3694

St Paul's Community Church Hall, Sunday 27th July at 3pm, invite you to a **special commemorative service** for families that have suffered a loss of a child.

Just a reminder every Thursday at St Paul's Community Church Hall 10am there's **exercise and games for seniors**, followed by morning tea, \$2.00 per session.

If transport required please contact Nicola on 0212778061 or 03 542-3694

St John's community lunch at Wakefield is held every third Thursday of the month. Donation required.

Waimea Senior Care is a community service for Seniors in Wakefield and Brightwater area provided by the Anglican Church.

southfuels
Spring Grove

Proud to be Supporting
Our Community

Main Road North Spring Grove, Wakefield
Ph: 03 541 8444

24/7
Fuel

We are open 7am - 6pm Mon - Fri
8am - 1pm Saturday
Closed Sunday

WAKEFIELD VILLA
Tearooms & Gift Shop

Tearooms Open Tuesday - Sunday
9.00am - 4.00pm
Gift Shop Open Friday - Sunday
10am - 4.00pm



Telephone
541 9168
14 Whitby Way

Stock Clearance in the Shop - be in quick for some bargains

Sale ends 20th July

Online Shopping Now Available

www.wakefieldvilla.co.nz

WAKEFIELD QUARRY



566 Church Valley Road
6km from Wakefield

FOR: Decorative garden cover
Drainage metal
Hard fill
Basecourse 70mm
Topcourse 40mm & 20mm
Landscape Rock
Lime

You Collect or We'll Deliver

Limeworks 541 9093
Tony Dick 541 8392 a/h
Philip Dick 541 8666 a/h



OPEN:
MON - FRI 7.30am - 5pm
No longer open Saturdays

"Who said winter is a bad time to sell!"



NEW PRICE
70 PITFURE ROAD
 \$529,000+
 4 beds, 2 bath, cedar and coloursteel



NEW PRICE
96 HOULT VALLEY ROAD
 \$850,000 + GST if any
 5 beds, 2 bath, 2 living on 8.7ha



OFFERS PLEASE
128 WAKEFIELD-KOHATU HIGHWAY
 \$537,000+
 5 beds, 2 bath home on 1.32ha flat land



UNDER OFFER
43 PITFURE ROAD
 \$399,000+
 3 beds, 2 bath, on 1470m² fully fenced



8 M^cCRAE STREET
 \$469,000+
 Brand new 3 bed, 2 bath home



UNDER OFFER
44 LORD AUCKLAND ROAD
 \$374,000
 3 beds, office, conservatory, logburner



SOLD
146 TOTARA VIEW ROAD

Proud to Sponsor

Wakefield School
 E TU KAHIKATEA
 Performance Music Programmes



SOLD
39 LORD AUCKLAND ROAD



SOLD
391 MAIN RD SPRING GROVE



SOLD
15 WHITING DRIVE



SOLD
46 KILKENNY PLACE



SOLD
5 MAYER CRESCENT

WANTED IN WAKEFIELD
 3 bedroom home up to \$350,000
 for genuine buyer.
 Please call for a FREE appraisal.

WANTED IN WAKEFIELD
 I have genuine buyers who require
 4 bedroom, 2 bathroom homes.
 Please call for a FREE appraisal.



WENDY PEARSON
 544 5488 / 541 8778 hm
 LICENSED REAL ESTATE SALESPERSON (REAA 2008)



Town and Country Talk

THE IMPORTANCE OF DENTAL HEALTH

by Brenda Halliwell

Our pets don't brush their teeth so, unless you do that for them, they are vulnerable to the effects of bacteria, plaque and tartar. In combination these factors cause periodontal disease which is inflammation and infection of the gums and soft tissues surrounding the teeth. Eventually decay around the teeth causes tooth loosening and pain.

But dental health is not just about creating a white smile and pleasant smelling breath in your cat or dog. Bacteria associated with dental disease can cause illness and disease elsewhere in the body, especially if bacteria circulate in the bloodstream and lodge on heart valves or in the kidneys and liver. If this happens in animals with existing health problems such as diabetes or kidney disease, the results can be very debilitating and potentially fatal.

Early intervention is the key to preventing periodontal disease and the risk of heart and kidney disease. We have multiple options available and we offer FREE NURSE DENTAL CHECKS. Don't wait until it's too late - make an appointment for your pet today!



DO YOU HAVE A DOG?

Join us for an informative evening on HOW DOGS LEARN with guest speaker Vikki Pickering from 'You and Your Dog'

Thursday 10th July at 6.30pm
 at Wakefield Methodist Church, corner of Arrow and Edward St, Wakefield
 \$10 per person

including coffee, dessert, gift bags, lucky draw and spot prizes
 For tickets or more info call 03 5419752 or 03 5441200



NITRATE POISONING IN COWS

Nitrate poisoning is one of the major health risks when feeding any winter forage crop to dry cows. Nitrate is most concentrated in lower parts of the stalks and can build up to dangerous levels after excessive fertiliser application or following periods of slow growth eg after drought, frost, overcast days. Poisoning can be seen within a matter of hours of being put onto dangerous feed.

Inside the cow, high concentrations of nitrates are unable to be processed fast enough and ultimately this interferes with the oxygen-carrying capacity of red blood cells. Therefore clinical signs of nitrate poisoning typically reflect lack of oxygen to the tissues.

Clinical signs include cows that go down with apparent milk fever, or if standing, will appear uncoordinated with an increased respiratory and heart rate. They may have blue gums through to chocolate-coloured gums. Cows may simply be found dead. Surviving animals may abort their calves.

There is an antidote but it must be given by slow injection into the vein. This is not always practical when there are a large number of cows affected.

As usual, prevention is a better option. Fill cattle up with hay before letting them onto risky feed. Only let them on for an hour initially and check them regularly. Move cattle to a new break later in the morning when nitrate levels have reduced. Rumen microbes will adapt over a period of weeks to a diet higher in nitrates so cows can cope with it better once they are used to it. Nitrate test kits are available for testing crops.

Contact the Richmond clinic on 544 1200 if you would like more information about nitrate poisoning or testing.



"...for all creatures great & small..."

Open Monday - Thursday 8.30-5pm

Consulting Hours

Monday morning with Brenda
Tuesday afternoon with Brenda
Thursday morning with Paula

Ph 541 8974

info@tcvet.co.nz * www.tcvet.co.nz
 Edward Street, Wakefield

Head office 35 McGlashen Avenue, Richmond



544 1200 24 hours

WAKEFIELD COUNTRY PLAYERS
PRESENT

Cinderella

By Roger Hall

Wakefield Village Hall
25th, 26th July
30th July (show only)
1st, 2nd August
7.30pm

Lyrics by Paul Jenden
Music by Michael Nicholas Williams



A classic tale with a modern twist

IN AGREEMENT WITH



TICKETS:
\$38 DINNER & SHOW
\$15 SHOW ONLY

FOR INFORMATION AND RESERVATIONS:
CALL DIXIE McDONALD ON 541 8862
ENQUIRIES@COUNTRYPLAYERS.ORG.NZ

Wakefield Physio - Health & Wellbeing

The Path To Recovery

by Kate West

On a regular basis I see people who struggle to come to terms with their injury. The impact their injury has on their daily life can make it hard for them to focus on the way forward and the steps they need to take to get over their injury.

Here are a couple of tips to help you move in the right direction:

- * Focus on your improvements and successes, no matter how big or small.
- * Focus on your rehabilitation: do the exercises you are given, and follow the recommendations you receive from your health professional.
- * The more you know about your injury, the causes of it and how the rehabilitation process works will help you to understand what is going on, stay positive and be reassured about your situation.

As a physiotherapist we guide you through this process. We develop an individualised exercise program for you which empowers you to take responsibility and ownership of your rehabilitation. We measure your improvements and help you to continue forward. We educate you on your injury and implement changes that target your entire body rather than a specific injury site.

By taking the focus off your injury you will feel positive, empowered and ready to take the steps needed to move forward to your recovery.



Kate West BPhy

Mary Caldwell Cred MDT

Accident & Sports Injuries
Neck & Back Pain

All Sprains & Strains
Pre/ Post Surgical Rehab

ACC & PRIVATE TREATMENTS ★ ACCREDITED PRACTICE

03 541 8911

WAKEFIELD HEALTH CENTRE 12 Edward Street, Wakefield
info@physiowakefield.co.nz

Womens Biz

WELLS RURAL POST

Contact Matt & Angie Wells for all your RD2 Wakefield postal needs, including

- Prepaid Envelopes
- Stamps • Courier Items
- Local freight from Wakefield, Dovedale and Tapawera.

Prescriptions from Wakefield.
Phone 541 8177

Womens Biz had the pleasure of getting together this last month at the home of Genie and Lindsay Bradley, and the office of Wakefield Print. Thanks heaps guys for hosting us at your place and providing such a warm and inviting atmosphere.

We were lucky enough to have a look around the printing room and see the huge machines that churn out all of the business products that we all need. I must say that the huge guillotine used to cut up business cards and multiple other items, was a real eye opener and in the wrong hands, looks like it could take your arm off very easily.

The big new printer is amazing and we were informed all about the built in functions that help to deliver a quality product to the customer. We also got the opportunity to look at the many promotional products, wedding invites, and examples of other advertising material that Wakefield Print produce. Thanks once again for the tour and information.

In addition, Fiona from Kahurangi Cottage bought along a big selection of her natural skin care products. Kahurangi Natural Skin Care is a range of moisturisers using all natural ingredients. The creams can be used for their healing, as well as cosmetic use.

With everything from Eczema Skin Cream, to Lime Body Butter, and Muscle Ache & Tone Cream, there was a huge range of products for us to test. The smells were delicious and there was something for everyone to try and buy.

Fiona is also able to make up products that suit an individuals requirements and in a product size that suits too, so she is very flexible. Thank you very much Fiona for introducing us to your great range of products. I am sure that you have gained a lot of new clients from our meeting.

Womens Biz is a friendly and informative group who meet on a monthly basis. Formed to provide an informal support and networking group for the very talented ladies in the Wakefield / Tapawera and beyond area. For further info feel free to contact Justyne 522 4488 or Sonia 5419005, and we can also add you to our mailing list.



6 Edward St, Wakefield
Phone: 541 8747

Winter Hours

Sun - Tues	9:00 - 3:00
Wednesday	Closed
Thur	9:00 - 7:00
Fri - Sat	9:00 - 8:00



48 EDWARD STREET, WAKEFIELD
'An Historic Restaurant Under New Management'

You are welcome to come in check out our New Restaurant Menu

Takeaway / Bar Menu Available

Opening Hours 5pm - 9pm
Wednesday, Thursday, Friday
Saturday and Sunday

Kids meals available

Bookings Preferred
Ph: 03 541 8600 or 027 967 3817

We also offer catering services for your next event or function.
Feel free to call if you have any enquiries

KIWICULTURE
CATERING SERVICES LTD

Library News

by Gillian

Last time I wrote about the lovely library in Wakefield I mentioned that it is staffed by volunteers and we hoped to have more volunteers to help.

Yes, four people volunteered and now we have a good list of people on the roster. Thank you to them all.

A reminder that the library is open on Tuesday mornings from 10.30 am till 11.30 am and on Friday afternoons from 2.30pm till 4pm.

If you are unable to return books you have borrowed they can be left at Hairraisers, the hairdresser next to the café on Edward Street.

We do appreciate this service and we mostly remember to collect them when it is our turn to be at the library.

We do have a selection of children's books, and like all the books that we get from the Tasman District Library these are changed regularly.

A new selection of books, both large print and others will be available very soon.

We love to see people who come to borrow or return books, and maybe stop for a chat as well.

(Wakefield Community Library shown on the left of this photo)



Nelson Lakes Nostalgia



Mid-Winter Xmas Events.

TopHouse will be decorated with REAL Xmas trees in the month of July



Saturday 5 & New date 26 July 2014

Xmas Dinners, 4 courses, \$70.00 pp incl. entertainment.
DBB \$150.00 pp twin share.

Sunday 13 July 2014

Christmas in July*

Xmas Market, Family Activities Mulled Wine, Open Fires. 3.00 - 6.30pm
-Xmas Buffet 6.00pm \$45.00per adult Kids <18. \$2.00 per age!
-Stallholders wishing to participate should contact Jennifer a.s.a.p.

Dinner Reservations required.

Check out our website for details on menus, times & to book.

TopHouse Historic Guesthouse, Café & Bar, Nelson Lakes.
www.tophouse.co.nz info@tophouse.co.nz
or phone: 03-5211848/ 0800-544545

WINTER Café Hours Open NOW-OCTOBER

THURS -MON 12.30pm - 6.30pm
for Lunch, Afternoon tea, Apres Ski Meals & Drinks
Dinners by arrangement.
Accommodation (>26p) 7 days

WINTER WEATHER PHOTO
[following last months historical article]



George Godbaz and family making a snowman at Foxhill, 1931.

The Way We Were

The Bridge to Pigeon Valley

Prepared for the Waimea South Historical Society by Roger Batt

Wakefield has always been prone to flooding as has been demonstrated by the heavy rain experienced last month.

Often a felled tree was first used to make a temporary crossing but until more permanent structures were built many lives were lost when settlers attempted to cross rivers.

Two recorded drownings in the early days were William Curling Young, the immigration officer, attempting to cross the Wairoa in 1842 and Ben Lines in the Wai-iti in 1848. Tombstones in local cemeteries often record these tragedies.

The first bridge across the Wai-iti to Pigeon Valley in the 1860's was short-lived. It was swept away in a flood.

The second Pigeon Valley Bridge built in 1885 lasted until a flood washed it away in 1904. It was a white painted construction with wrought-iron handrails. It was 354 feet long and 14 feet wide. The cost was 1,699 pounds. Mr J Shepard MP opened the bridge and the first crossing was made by Mr and Mrs Joseph Baigent who formally cut the ribbon and drove across in a pony cart.

The third bridge was 50 feet longer than the second. It was built on the original piles and had a passing bay in the middle. Kauri and iron-bark timber was used and the iron work needed to hold the structure together weighed more than three tonnes. It was built in only eight weeks and opened with Joseph Baigent and Mr James Thomas doing the honours and riding across it in a sulky or two wheeled carriage.

Over the years the superstructure deteriorated. It was replaced by EG Lines and Sons in the 1960's with steel beams and new decking. In 1983 a survey of the bridge was in progress when a huge flood washed away five of the nine spans cutting off Pigeon Valley. A surf-caster threw a line across the still flooded river and set up a flying-fox which conveyed mail and essential goods. Later a temporary by-pass was constructed from salvageable materials.

The new replacement bridge, still in use today, was opened in August 1985. The ribbon was cut by Mr Ralph Davis senior aged 92 and Mr Noel Baigent, the great grandson of Edward Baigent who had opened the first permanent bridge 100 years before. Mr Davies was the first to cross, driven in a horse and trap accompanied by Mr Fraser Coleman, the Minister of Works and Development.

Acknowledgements:

Just Another Row of Spuds, Stringer, Marion - Copy Press 1999
Waimea South Collection in Kete Tasman



Waimea South Historical Society
Meets Thursday 24th July at 2pm
Constance Barnicoat Room Tasman District Library

Guest Speaker: Diana Clark
who will talk about her great grandfather
Appo Hocton -
the first Chinese immigrant to Nelson in 1842

We hope to have copies of Karen Stade's
book on Appo for sale at \$20.00

Waimea South
Historical Society

Incorporated 1981



Explore the
past with us
www.waisouth.wordpress.com

On The Beat

Yes winter is here, can't wait until our local skifield opens.

You may have heard recently of the law changes around the penalties re "poaching" or to use the correct wording:- "Breach of Wild Animal Control Act".

The penalties are now up to a maximum of \$100,000 and two years imprisonment. This is a massive step up from the \$500 or \$1000 (depending if it was your first or second offence).

Remember the fine and term of imprisonment is only for each individual. The fine for a corporate is \$200,000 plus \$10,000 per day thereafter.

So these penalties are related to "Anyone caught who discharges a firearm into or over or across any land without the permission of the owner or occupier of that land" or anyone who "hunts or kills or have in their possession a wild animal without the authority of the owner or occupier of that land."

This could relate to any forestry land, DOC land, farm land, reserves, bush blocks, rivers, beaches or even roadside verges. You need to get permission or permits.

And this applies not only to day time hunting but also to spotlighting at night.

Remember, if you don't have permission of neighbouring farms or blocks of land then best you don't shoot in their direction or go on their property to uplift killed animals.

I think that's enough to get our heads around.

Take care on the roads, be it driving or walking.

Peter Cobeldick
Wakefield Police



Wakefield Volunteer Fire Brigade

Just another reminder about cleaning out your house and shed gutters, driveway grills and street grills by your house to avoid flooding. A good example of a heavy down pour was June 16th with local flooding happening in our town and outside areas. By taking these simple steps may save you and your neighbors' some heart ache and some hard work later.

We have had a few heavy frosts already this winter but I can be certain there will be more to come so some simple rules to follow to avoid calling your insurance broker:

- Make sure you remove the ice off your windows prior to driving off so you have good vision all around your car or truck
- If you see or feel ice on the road, slow down until you are clear of the ice

Winter is here and so far this winter we have been called out to two chimney fires so if you have a fire have you cleaned it out this year?

- Call outs for June so far
- MVA = Motor Vehicle Accident
 - PFA = Private Fire Alarm
 - PFA Brightwater x 4
 - Medical Assist x 2
 - Chimney Fires x 2
 - MVA x 1
 - Structure fire x 1
 - Oven fire x 1
 - Permitted Rubbish fire x 1
 - Flooding x 3



In total this year 52 calls so far up to 23/6/14. Take care.
Fritz Buckendahl, CFO WVFB

Flying in Wakefield

Last month, whilst my compatriots were playing average football against the Italian team, I flew from Christchurch to Wellington. This may not sound so unusual, but I actually flew - I was in a cockpit that looks exactly like a real Boeing 737-800, actually flying the aeroplane. And I took off from Totara View Road.

Around eight years ago, Wakefield residents Isaac Neuman and Phil Medcalf discussed building a full scale fixed base flight simulator. And now, after substantial investments of time and work, they are finally ready to open their simulator to the public. It has been rigorously tested by real world pilots - and by me.

The computer systems and the authentic cockpit combine to give an amazingly accurate experience, unseen elsewhere in the top of the South Island. With pre and post-flight checks, genuine controls, switches and sounds, from the moment you take your seat (the hot seat), you are piloting the plane. For most of us, it is a rare chance to find out how it feels to fly a mid-haul plane, to apply the rigorous checks and counter checks that are second nature to qualified pilots. To discover how it feels to flick the switches and taxi down the runway. And it feels exciting!

Plotting and following the flight plan, checking the waypoints and keeping an eye on the altitude, it all feels remarkably real. So I was a little surprised to find myself still in Wakefield when I emerged from the cockpit. It seemed more likely I really would be in Wellington, where my landing frankly left a little to be desired. But next time, I'll nail it. Or maybe I'll fly to Auckland instead.

Sim Team Flight Simulation Services, 86 Totara View Road, Wakefield
Phone: 03 541 9533
Trading hours: By appointment

****STOP PRESS: Window on Wakefield readers will receive a 15% discount on a full flight****



WAKEFIELD BUTCHERS

WE ARE NOW OPERATING FROM A NEW LOCATION SITUATED AT
59 EDENS ROAD, HOPE

PH: 544 6880



CELL: 0272 404 979

FOR ALL YOUR WHOLESALE HOMEKILL AND WILD MEAT PROCESSING
HAM AND BACON MADE TO OUR SILVER MEDAL WINNING RECIPE
GLUTEN FREE SMALLGOODS AVAILABLE ON REQUEST
CONTINUING OUR EXCELLENT SERVICE TO YOUR REQUIREMENTS
Email address: wakefieldbutchery@snap.net.nz

WE HAVE A DUAL LICENCE

WE CAN SUPPLY MEAT TO THE PUBLIC AT WHOLESALE RATES.

ENQUIRE ABOUT OUR BEEF SIDES AND BEEF PACKS
PORK SIDES INCLUDING BACON AND HAM
WHOLE LAMB AND SIDES AVAILABLE

ALL TYPES OF SMALLGOODS INCLUDING
BACON, HAM, CHORIZO, BIER STICKS, SALAMIS,
BLACK PUDDING - APPROX 1KG MIN ORDER
FLAVOURED SAUSAGES, SAVELOYS AND PATTIES
MIN 5KG ORDER

PLEASE RING TO PLACE AN ORDER AS WE ARE NOT A SHOP BUT
A WHOLESALE OULET

MIN ORDER \$50 - ALL OF THE ABOVE SUBJECT TO
AVAILABILITY

ALL PRICES EXCLUDE GST

CALL LINDSAY TODAY TO DISCUSS YOUR MEAT PROCESSING NEEDS. WITH 48
YEARS EXPERIENCE IN BUTCHERY, YOUR BUSINESS IS HIS PASSION.

REDWOOD BUILDING Services Ltd
The pathway to your new home

FOR A PROFESSIONAL, DEDICATED BUILDING SERVICE
"FROM BEGINNING TO END"



- All building projects undertaken from large to small
- Trade Certificate qualified
- 33yrs experience
- Building inspections
- Site management
- Project management

REDWOOD BUILDING SERVICES LTD

ROWAN READER

ph 021 154 6040

Email: redwoodbuilding@clear.net.nz

Wakefield PRINT LTD
DESIGN • PRINT • PROMOTIONAL

These Jackets Now \$45.00+gst each

Ripstop & Gravity
These colours only

Be in quick Limited Sizes Available

Men's & Women's X-Trail Jacket
Aluminium/Navy Only

GET ALL YOUR PRINTING, PROMOTIONAL & APPAREL AT ONE CONVENIENT PLACE
4 Harcourt Place, Ph: 03 541 9641 Email: info@wakefieldprint.co.nz

Logos for crt, MasterCard, VISA, eftpos, and Cash or Direct Debit.

Community Fundraiser

Do you have a dog?
Join us for an informative evening on **How dogs learn**
Speaker - Vikki Pickering from 'You and your dog'

Coffee and Dessert
Gift Bags, Lucky Draw and Spot Prizes

10th July at 6.30pm \$10 per person

The event is to be held at Wakefield Methodist Church
Corner of Arrow Street and Edward Street, Wakefield

For more info call (03)5419752 or (03)5441200
or pick up your tickets from Town and Country Vet,

All proceeds will be going to In association with

Wakefield Health Centre

Wakefield Health Centre

Surgery hours:
Monday to Friday 8am – 5:30pm
Wednesday 8am – 7pm
New Enrolments Welcome

Phone 541 8911
12 Edward St Wakefield

FLU VACCINES:
A reminder to everyone that is eligible for funded flu vaccines that the last day for this is 31 July 2014.

Funded includes:
* 65 years+
* Chronic conditions: Diabetes, Chronic Renal, Cardiovascular, Respiratory, X2 Chronic conditions

Vaccines given after 31 July 2014 will be charged.

SMOKING:
It is a requirement by the Ministry of Health that GP surgeries collect Smoking Status on all our enrolled patients from the age of 15 years.

Many of our teenagers do not have a smoking status. Please let the Health Centre know your status and if you are a current smoker we do have our Practice Nurses available to give you Quit Smoking advice and scripts to help you give up smoking.

YOU CAN DO IT – PUT THE MONEY SAVED AWAY FOR THAT HOLIDAY YOU WANT OR MAYBE A NEW CAR!!

Wakefield & Districts Community Health Centre Annual General Meeting TUESDAY 29 JULY 2014 7.30pm at Wakefield Health Centre ALL WELCOME

SINCERE OPTIMISTIC LOYAL DETERMINED

Selling your home is not always easy, however...
Choosing the right agent is!

Call me for a free appraisal and market update and be one of Bayleys next success stories.

John Fitzgerald
Rural and Lifestyle Specialist
B 03 546 9455
M 027 808 1177
john.fitzgerald@bayleys.co.nz
Vining Realty Group Ltd, Bayleys
Licensed under the REA Act 2008

BAYLEYS
Big on NZ

Rural Ramblers

Photos from last months walk at Pepin Island, Cable Bay.

Hair Raisers

Magic Can Happen

Ph 541 8312

Mahoe Hills
Creative Workshops and Alpacas
Mosaics, felting, fibre & fabric dyeing and more craft workshops
Healthy living workshops including natural skincare and healthy eating
www.mahoeHills.co.nz – marion@mahoeHills.co.nz



World Challenge

Hi my name is Nicole Preller and I want to become a challenger for the 2015 world challenge expedition which is held in Costa Rica and Nicaragua. I need to raise \$9800 so I can go on the expedition with a group of students from Waimea College.

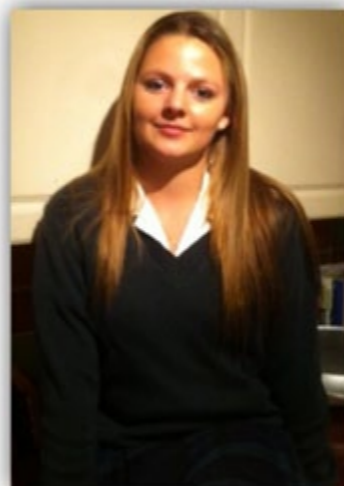
World challenge expeditions are like no other because they are student led. Challengers take on all the day to day responsibilities and manage the budget for the duration of the expedition. The challengers are planning their own itinerary, travelling to another country in the world, spending time volunteering in a developing community and trekking through challenging terrain. World challenge believes the students come back with a different perspective on life.

So far I have been selling fudge and raffles tickets. I joined the Saturday market in Wakefield selling car boot items. I would like to thank everybody who has supported me so far.

If you would like to help me by buying a raffle ticket, \$5.00 per ticket. Raffles will be drawn Saturday 26th July 2014 and there is 1st and 2nd prize.

Or you can purchase a block of boysenberry and white chocolate fudge for \$4.00 a block. These items are found at Wakefield Villa Tearooms & Gift Shop.

I will be coming up with lots more fundraising ideas to achieve my goal.



Mobile Feet Podiatry



Carole Horrell B H Sc (Podiatry)

Now available at Wakefield Health Centre
Phone Carole to book

Mobile: 021 0247 4037 | A/H 03 9275120
Email: carole@mobilefeet.co.nz
www.mobilefeet.co.nz

HOUSE REPAIR

SMALL JOB SPECIALIST

General Carpentry
Plaster Board Stopping
Painting



OVER 20 YEARS
EXPERIENCE

Brian Grant - Owner/Operator
027 541 9250 • 03 541 9250
17 Lord Auckland Rd, Wakefield 7025
gibberjabber@xtra.co.nz

Wakefield Community Council/Focus Wakefield

FOCUS WAKEFIELD

wishes to invite you to
an initial meeting to discuss the establishment of an
Annual Wakefield Event.

The purpose of this event would be to "put Wakefield on the map" as a destination/event not to be missed, provide an opportunity for community groups, sports teams etc to fundraise, and to provide a social opportunity for our community.

If you have some great creative ideas or are keen to be involved either as an individual, or on behalf of your group, then please come along to this meeting. All welcome.

Wakefield Village Hall
Mon 28 July 7.30pm

or for more details email focuswakefield@gmail.com

ANZAC Day 2015 the 100th Year

Wakefield Community Council is planning
for the ANZAC 100th anniversary
in 2015 and we want anyone interested
or having ideas to make this day very special.

We are going to hold a meeting on
**Monday 21st July at the
Wakefield Fire Station at 7:30pm**

If you cannot make this meeting
please give me a ring in the evening
Fritz Buckendahl 541 9061

CENSUS DATA 2013

The census data from 2013 is now available at www.stats.govt.nz. Some of the key points for the Wakefield region are:

Population of Wakefield and Tasman District 2013 Census

Sex	Wakefield
Male	1,038
Female	1,068
Total people	2,106

Source: Statistics New Zealand

- * There are 732 occupied dwellings
- * The median age is 38.3 years
- * 12% of people are aged 65 years and over
- * 25.6% of people are aged under 15 years
- * The most common occupational groups in Wakefield are 'labourers' and 'professionals'
- * The unemployment rate is 3.9% for people aged 15 years and over
- * 39.4% aged 15 years and over have an annual income of \$20,000 or less
- * There were 165 business locations (geographic units) in Wakefield
- * 23.3% of households in Wakefield have access to three or more motor vehicles

* For households in Wakefield who rented the dwelling that they lived in, the median weekly rent paid was \$300.

* 81.9% of households in Wakefield have access to the Internet

For more information and comparisons to the wider Tasman District, and New Zealand, refer to the Statistics NZ website.



**KERNOW
LANDSCAPE
DESIGNS**

Designing and constructing quality
homes and gardens since 1984.

For a free site visit and discussion
phone Jason Preller

**021 167 3803
or 03 541 9141**

email: kernowlandscapes@ihug.co.nz
www.kernowlandscapes.co.nz



ENJO®

CLEAN THE WORLD

Do you want to save time, save money, save the
environment and improve your health?
ENJO cleaning fibres are the answer.
Call me today to book your own in home demo or
for more information.
Linsey Kennard: 022 139 2805

Wakefield Playcentre

by Amby Cowe

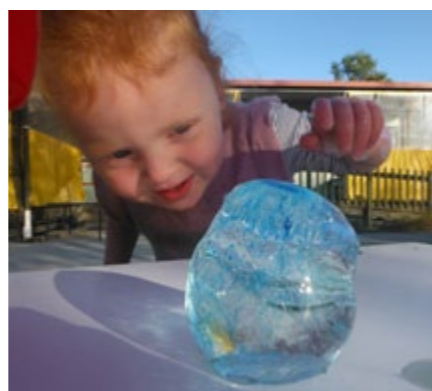
This term Wakefield Playcentre families have been on a few trips out.

We joined Richmond Playcentre on a trip to the Nelson Gym where the children (and grown-ups) had fun using the equipment to balance, swing, jump and climb. It was great to see the children challenging themselves.

We visited the Animal Farm near Mapua where the children got to feed different animals and enjoy a ride on a donkey. The children enjoyed being followed by piglets and being able to see and touch animals that were new to them.

Last week we visited Tapawera Playcentre. The Tapawera families were very welcoming and it was awesome to see the Wakefield children fitting in quickly and exploring the centre with enthusiasm.

Back at the centre we have been experimenting with different textures with a variety of finger paint, slime and coloured ice. It has been very interesting to watch the different ways the tamariki choose to explore these substances, showing great imagination and individualised learning experiences.



- *Planting projects
- *Landscaping projects
- *Arborist work
- *Tree felling
- *Hedge trimming
- *New establishment of lawns & Lawn care
- *And much more green care of your property

This is done by a trained arborist and nurseryman with many years of experience in plant production and the landscape business

contact MORTEN for a free quote
Ph: 021 206 9914 or 541 86 85
email: mortengaylene@aol.co.nz

Full insurance cover while all work is being done

Hon Damien O'CONNOR
MP for West Coast/Tasman

0800 DAMIEN (0800 326 436)
Facebook: damienoconnormp
damien.o'connor@parliament.govt.nz

Authorised by Damien O'Connor MP, Parliament Buildings, Wellington

Silver Summit For all your building needs

- *DECKS
- *JOINERY
- *KITCHENS
- *SLEEPOUTS
- *BATHROOMS
- *RENOVATIONS & Smaller Building Works

For Testimonials and more photos go to <http://www.trademe.co.nz/a.aspx?id=509660415>

Give Simon a call to get your no obligation free quote.
A/H 03 541 8507 Mob 027 541 8507 E-mail silversummit@rocketmail.com

The Glen

MEAT SHED

PROCESSORS OF FARMED AND WILD GAME MEATS

For all your killing and processing requirements

Phone Garry on 027 441 3099 A/H 546 6350
e-mail-garry.vesper@clear.net.nz

Maker of quality smallgoods from farmed animals and wild game.

Processors of cattle, sheep, goat, pork and all farmed animals.

Processed and packaged to your personal requirements.



A Matter of Accounts

FINANCIAL SOFTWARE

In my next series of articles, I will profile a range of financial software products that are available to small businesses at the moment.

Some accountants like to have most of their clients sign up to one particular financial software option which might make it easier for them. I personally don't believe that there is a one solution fits all model, as every business has very different needs and requirements, and the financial software chosen needs to fit within those parameters.

When is it time to invest in or upgrade your financial software?

Some businesses need or would benefit from using financial software from day one. Others may start off with using a very basic manual system or paper based cashbook because that is all they really need. However, often over time your needs will change and grow. If your business has evolved and grown, it may be that you now need more features or functionality ie you need to add invoicing or debtors capability or the ability to track by departments.

Some other key reasons for looking at implementing new software or upgrading are:

- Current system can't cope with the volume of transactions
- Existing processes are slow or if electronic, response times are not good enough
- Staff or business owners are doing repetitive work that could be automated
- You need your financial software to integrate with other modules ie CRM, email or business specific software
- You need to be able to access information on your business that is not currently available due to it not being recorded appropriately or at all

So you've made the decision to invest in a new accounting software package, or upgrade the existing one, and for all the right reasons, so how do you make sense of all the options in the market?

When making a decision you need to consider the following:

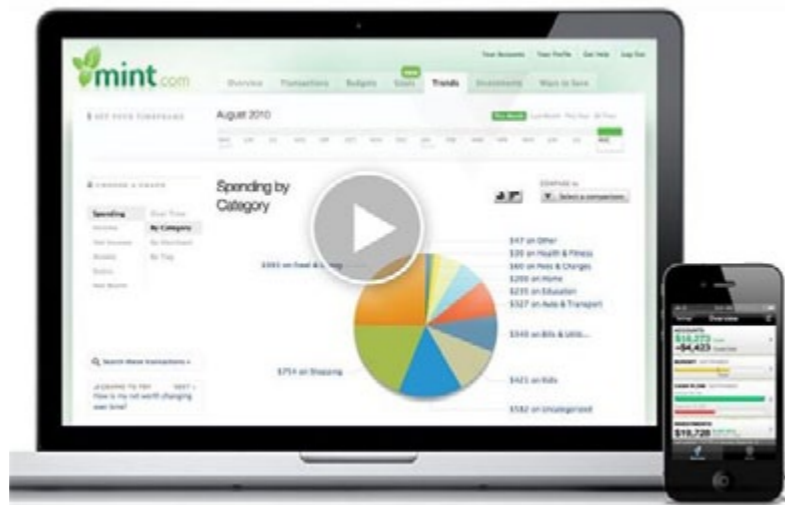
- Do you want to have the software on your desktop only, or available online wherever you are?
- What level of support do you require and can the software provider or perhaps your accountant assist with that? Is it face to face, email, or phone?
- Does the provider include regular updates and improvements to comply with legislative requirements and improved functionality regularly and at what cost?
- Does the software provide the ability to grow?
- What are the upfront costs, as well as ongoing support and maintenance costs over the next five years?
- Do you need to use your financial software across various platforms ie desktop, laptop, tablet and phone?
- When deciding on the best software solutions it pays to think about the problems you are trying to solve rather than just does it do X and Y.
- Make sure you also take into account the things you like about the current system and don't just assume that you will get that with any system.
- The software should be flexible and work the way the business does, not constrain you or your staff to its way of doing things

Finally, in order to make the best decision on software for your business, it is important to shop around, gather information and make an informed decision. It's a good idea to talk to others who are already using it, and to also get advice from your accountant.

There are software products and suppliers that can grow with your business from day one, even when you become an employer and need that add-on payroll support, but there is no point in buying a top end solution with all the bells and whistles if you will never use them and they just add complexity to processes.

Next month, I will outline the first of several software packages available.

This information is intended as a guide only - it is not intended as legal advice. For more detailed information please refer to the legislation or seek legal and/or accounting advice.



All Accounts Matter Ltd

For All Your Accounting and Tax Needs



Sonia Emerson
Chartered Accountant

Mobile: 021 221 1009
105 Whitby Road, Wakefield 7025
Phone: 03 541 9005 Fax: 03 541 9305
Email: allaccountsmatter@gmail.com

Live Local Shop Local

Profiling a Wakefield business - Helping keep the great businesses in our Village

Hill Top Native Nursery

by Caraline Dyson

When I worked in advertising, I took countless briefs from companies who insisted they were 'like a secret waiting to be discovered', and every time I heard it, the client was sure it was true. And very occasionally, it was. But here in our village I have finally found a company that truly epitomises the phrase.

Most people who live in Wakefield know Eighty Eight Valley Road. But how many people have visited Hill Top Native Nursery and taken the special journey to the top of the hill? To do so is to take a magical mystery tour over a narrow bridge, up a steep winding road, past tall eucalyptus trees that stop you from driving off the track, until you reach a secret plateau that reveals an amazing view and 10 acres of native wonderland. Yet you're five minutes from the village green!

And the journey to Hill Top Native Nursery is only the beginning. When you meet owners Bevan and Rachael Hart you can't fail to see the passion they have for their business.

The couple have over twenty years nursery industry experience, and they specialise in NZ natives, especially Nelson eco-sourced plants. They have local knowledge of soil types and micro climates, and they can advise you on the suitability of the plants and trees you love for where you live. As propagators and growers, the combination of their wholesale prices, expertise and enthusiasm makes them pretty much incomparable. Their range starts at \$1.50 root trainer grade plants and goes up to two metre high mature plants, and they have more than 150 different species on site.

It is rare to find a business that offers the same one on one service to every potential customer, regardless of their requirements, but that is what Hill Top provides. Appointments are essential to ensure you receive the Hart's dedicated attention (and to prevent you meeting another car coming in the opposite direction on the marvellous drive!).

It is not unusual for them to spend a couple of hours with customers considering their options, and they also offer free site visits if desired. Once you leave with your plants, shrubs or trees, they also provide planting and maintenance services, and bucket loads of advice, if required.

Over the years, Hill Top has generously donated trees and plants to many community projects, and most local schools and fire stations are stocked with their natives. More recently, the cycle track has benefitted from Bevan and Rachael's benevolence, and Lake Rotoiti also features some of their trees and plants.

Perhaps you are reading this with a nervous smile, because you're one of their regular customers, with a property bursting with Hill Top Natives. Maybe you're worrying that this article has revealed too much, and your secret is out... But don't worry. There will always be some people who prefer to buy plants from the big DIY stores, who don't care where they came from, how much they cost or even how long they'll last. They drive past those places each week and it's convenient to go there.

Hill Top Native Nursery isn't for those people. It's for people who love secrets, who love exhilarating adventures, and who value passion, pride, provenance and prudence... and plants!

Hil Top Native Nursery 74 Eighty Eight Valley Road Wakefield

Phone:
Landline 03 541 8763
Bevan 027 541 8763
Rachael 027 286 7927

Trading Hours:
By Appointment
9.30am - 18.00pm



In Recognition of...

WAKEFIELD'S GOT TALENT

Over Easter, 13 year old Annabelle McMiken and Amy-Rose Berthlesen competed in the Nelson Motueka Dance Competitions.

They both had a successful competition and were invited at the end of the competition to dance in the Champion of Champions Concert.

Annie won the award for the most career potential in Tap, personality in Jazz and a \$200 scholarship for the most potential in dance over 12 years. Annie won the personality award for Tap and Ballet last year, so was aiming for the hat trick winning the Jazz award as well this year.

Amy-Rose also had a great competition. She won the trophy for 'most career potential in Jazz'.

Amy-Rose has just been accepted into Annaliese Gilberd, National Coaching Programme in Christchurch for classical ballet.

Amy-Rose learns Jazz, Ballet and Contemporary with Rebecca Bignall Academy of dance. Annie learns Tap with Tasman Tappers and Jazz, Ballet and Contemporary with Fargher Academy of Dance.

Both girls have been dancing since they were pre-schoolers.

Also invited to dance in the Champions of Champions from Wakefield were Tessa Bashford, who performed a Hip-Hop, and Lily McLean, performing a Demi Character Ballet dance.



WAKEFIELD ROWER REPRESENTING NEW ZEALAND

By Lynne Scanlan

After five years of training and a tough season of competition, Sean Ducray has been selected to row at the 2014 World Rowing Junior Championship at Hamburg in Germany in August.

You may know Sean and his parents, Mike and Julia, and sister Sarah who live in Wakefield. Sean is Year 13 at Waimea College. As well as rowing for the Nelson Rowing Club and representing Waimea College with Sam Johnston (from Appleby), Sean also manages to squeeze in some touch rugby and entrepreneurship.



Sean has been rowing since 2010. During the season he and his teammates will train 11 times a week; on week days they're on the water at 5.30am.

It's been a great season for Sean and his teammates. Highlights include winning the quadruple sculls at the New Zealand Rowing Championships. At the National Secondary Schools competition, Sam and Sean won gold in the under 18 pairs. They took the silver in the double sculls in a fierce competition with their clubmates, Olly Stephens from Tasman and Joe Brady from Nelson College.

This performance had Sean, Sam, and Olly called for the selection trials at Karapiro for the New Zealand Juniors team. After a tough week of erging and seat racing Sean and Olly were selected for the team. Along with the thrill of selection has been the sadness that Sam and Joe, their teammates, are not with them.

Sean and Olly are now training with the 21 members of the junior team at Karapiro and also attending school at St Peters College in Cambridge. They leave for Hamburg on 28 July and have a week to get acclimatised and familiar with the course before the racing starts.

The 2014 World Rowing Junior Championships are for under 18 rowers, and is the first time potential future Olympic rowers represent their country. 600 top junior athletes from 50 nations will be competing at Hamburg. New Zealand is sending four crews. Sean and Olly are rowing in the quadruple sculls.

Sean and Olly's first race at Hamburg is on Wednesday 6th August. All the best Sean! We're cheering you on.

In Recognition of...

by Isla Kennard, Age 9

Hi my name is Isla Kennard and I go to Wakefield School.

On Anzac Day me and my family went to Founders Park Anzac experience and there was a writing competition and I entered.

Last Monday I got a letter back saying that I had won the up to nine year olds.

For my prize I got \$10 for Richmond Night 'n' Day, a free movie ticket, two action indoor sports vouchers and a WOW museum child's admission.



The war

Guns bang,
soldiers walk around the battlefield nervously waiting
for the dreaded battle to begin.
Digging of trenches is happening.
Soldiers hiding from their enemies.
Soldiers wives hoping their husband will survive.
Bombs exploding.
Hear aero planes in the distance.
Dust flying everywhere,
the foul smell fills the air.
Young soldiers frozen with fear shouting I can't get
up, I can't get up.
Shells fly over the place and metal bits kill people.
People fall to the ground gasping for breath.
Soldiers refusing to fight,
shouting of the general can be heard from miles away.
There are no trenches to be seen only dead bodies.
A few years later poppies bloom in the field as
remembrance.

Lest we forget.

Focus Wakefield Recognises...

FOCUS WAKEFIELD UNVEILS YOUTH GRANT PROGRAMME

by Angela McMiken and Caraline Dyson

Last month Focus Wakefield agreed a motion to use funds raised from Window on Wakefield advertising revenue to support youthful endeavour. A total of \$2000 each year will be available to young Wakefield residents who would like to request a financial helping hand in their chosen sport, art, hobby or interest.

Could you shine like an All Black in a pair of new boots? Can you sail with your crew if you can make it to Auckland? Or maybe you could dance in LA if you can raise the funds? The Focus Wakefield Youth Grant Application form will be available from August 1st on the Focus Wakefield facebook page, or can be requested by emailing focuswakefield@gmail.com and later this year it will also be available from the new community website www.wakefield.org.nz.

Applications are welcomed from young people living in Wakefield who attend primary or secondary school, or by their parents on their child's behalf. Applications will be emailed to all members of Focus Wakefield prior to the next scheduled meeting. Members of the committee will review applications and place their vote prior to the meeting, to hasten the voting process. Members do not need to be present at the meeting to place their vote. A vote can be placed at the meeting, but there will not usually be a discussion about the applicant at the meeting unless the individual amount awarded is over \$200.

It is envisaged the sum of money awarded will vary, depending upon the individual situation of applicants. The amounts awarded may change depending on the future financial position of the Focus Wakefield Committee. Any future changes will be discussed at future meetings and publicised in Window on Wakefield.

All successful grant applicants must provide a short follow-up article for Window on Wakefield (including a photograph) to show residents how the programme is helping young people in our community.

Applicants should state:

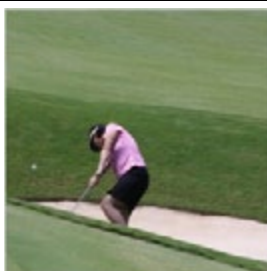
- * What the money is for? (Is it for equipment, music, sport, culture or academia? Tell us about it).
- * What the applicant has done already to raise funds, or any other fundraising activities planned.
- * Did the event they wish to attend require a selection process? Tell us about it.
- * What will they gain from attending the event? (If applicable)
- * Anything further that may support their application.

Village Sports News

TOTARADALE 9 HOLE GOLF CLUB

Another month, another tournament. This time at the Nelson Golf Club. Sixteen of our ladies were keen to attend. This was an amazing showing, more players than the host club fielded!

Once again the day provided a chance to catch up with other ladies from around the region. As Nelson is an 18 hole course the players were divided into two groups, Grade A and Grade B. The A Group playing the "front 9" (1 to 9) and the B Group playing the "back 9" (10 to 18). The weather was good and the day enjoyed by all. Winners and losers alike.



The course at Nelson is a Links course, running along the water edge, very sandy and with some quite long grass in the rough areas. It seems at times like large portions of the beach are lying in wait around the place disguised as very deep bunkers, just waiting for a little white ball to drop into them! As we only have a few easy bunkers at Totaradale we don't get that much practice in them. So the Nelson course can prove quite a challenge. Well done girls for giving it a go.

Unfortunately, I missed the tournament as I am writing this month's offering from my holiday perch on the Thai Island of Koh Samui. However I want to share with you a small observation I made last week. When arriving at the airport following a nine hour flight, to reach baggage collection one is faced with two options; A, the travelator (moving walkway); or B, actually walking on your own two feet.

Now it was very noticeable that the mature fit folks took option B. Having sat down for so long it was great to stride out, getting the circulation moving and all the muscles loosened. You could feel your head clearing and the brain getting into gear. We were actually moving faster than the travelator, which was populated by all the younger passengers from the flight, still half asleep and plugged into various electronic devices. They looked like a conveyor belt of blank robots.

So, what has all this got to do with golf. Someone once said, "Golf is a good walk spoiled". You could add, "but the views were wonderful". Golf is a wonderful, healthy way to keep fit. So if you fancy a good walk in beautiful park like surroundings, with great views, then come and join us at Totaradale Golf Club. Sure, you may have to hit a little white ball from time to time, but, you never know, you could be good at it.

Don't just stand there on the travelator of life, get off and try something new!

Village Sports News

Here are some action shots of the Wanderers Rugby Under Eights night game between Wanderers Stripes (in the gold and blue) and the Wanderers Blue (in the white) played on Friday 16th May.



Pinegrove Kindergarten

Pinegrove Kindergarten Community Celebration

by Naomi Ivala

On Thursday 3rd July we will be having a celebration to mark the beginning of the Maori New Year (which starts on the 28th of June), the blessing of our kindly donated new piece of land in our playground and our 16th Birthday.

We have already started preparing with the children working hard to lay the new bark for the extension, our parent market gardener Dominic Ferretti planting new vegetables for the season in our garden beds and the Community Correction Workers cleaning our shed and weeding our orchard area.

On the night we will have a selection of soups kindly made and donated by the members of our Family Liaison Group, a sausage sizzle and a vegetable soup made by the children and our very own chef, Tim Hodges.



It is sure to be a spectacular evening to celebrate all our wonderful achievements during this past term, this past year, these past 16 years.

These events bring people from all over the community to meet, mingle, relax and just have a good family night out.

The celebrations start at 5pm with a blessing by our very own Kaitohutohu Maori Emma Haruru followed by some yummy scrumptious soup.

Check out our
Focus Wakefield
Facebook page

[www.facebook.com/
FocusWakefield](http://www.facebook.com/FocusWakefield)

Share your stories,
photos, events
with the community.

Post your items wanted,
for sale, help needed etc...

**RURAL
COURIER**
TOP OF THE SOUTH RURAL COURIERS

Now accepting CRT cards

Phone or txt Julie before 10am for same day delivery
03 541 8833 • pickup@ruralcourier.com • 0277 1000 68

"Sorry about your letterbox 13a"

Nelson | Wakefield | Tapawera | Murchison | Daily

General
Freight

Groceries

Whiteware

National
Deliveries

ANTIDOTE APPLIANCE REPAIRS LTD



Servicing all major
brands of whiteware.

TIM LLOYD
79 Treeton Place
Wakefield
antidote@ihug.co.nz

For warranty, service or second hand sales call:

03 541 8877 or 021 1601 004

www.antidoterepairs.co.nz



Felbridge Cottage
6 Pitfure Road, Wakefield

Available through winter for
short or long stays.

Phone Phill and Brenda
03 541 9520

www.felbridge.co.nz

Wakefield Bowling Club

Wakefield Bowling Club achieves Bowls NZ Gold status

Wakefield Bowling Club has recently had its two yearly Bowls NZ "Club Check" assessment by Community Development Officer, Loraine McLeod and has achieved the Gold standard, scoring 104 points from a maximum 105.

Loraine states "this award recognises the emphasis your club puts on maintaining the high standard set". She goes on to say "I commend you for this and also acknowledge the leaders in the club for your drive and dedication".

Loraine is putting Wakefield forward for Bowls NZ Club of the Year award. As a small country club we are very proud of this achievement.



[Photo: members of the Wakefield Bowling Club Board for 2013-2014 with the letter from Bowls NZ confirming the Gold Award.]

Metal Collection: We are still collecting old TV aerials, car batteries, wire and any other scrap metal. Please contact Trevor at 5418855 if you want help with this.

LIVE WELL STAY WELL GROUP

For our June meeting we had a "Paverpol" demo with Gwen Nicholson from "Bee Free Creations". Paverpol is a setting mixture to which you add cotton materials and make ornaments for both indoors and outdoors. It was a great morning with lots of interest shown in attending further workshops especially for making some extra special Christmas gifts.

Live Well Stay Well" is a health and social group meeting Tuesday mornings every two weeks, 9.45am.
 Jul 8 - Meet at Wakefield Villa Tearooms 9.45 - 10.30ish followed by walk around Wakefield area.
 Jul 22 - "Bad to the Bone" speaker Janet Evans, Arthritis nurse, from the NBPPO. Wakefield hall supper room, 9.45-11am
 Aug 5 - Meet at Wakefield Villa Tearooms 9.45 - 10.30ish followed by walk around Wakefield area. Anyone is welcome to attend. Enquiries to Margaret 5419693 or Yvonne 5422235.



Patricia and Richard Greenhough, Lifetime Learning (NZ) Ltd are NLP (Neuro Linguistic Programming) Master Trainers.

- NLP Practitioner Training.
- Feldenkrais® classes
- TRE: Tension releasing exercises classes
- Residential healing retreats
- Coaching, Therapy, and Training.

Contact us on 541 8122, or info@lifetimelarning.co.nz
 Our website is www.lifetimelarning.co.nz
 At 33 Pigeon Valley Road South Branch, Wakefield.

Wakefield ELECTRICAL LTD

We Do All Electrical Work (incl. Caravans WoEFs)
 Andrew Smith - Electrician/Inspector
 Est. 2013
 03 541 8797 - 027 441 8797
 "Your Local Electrician"

New Umpires:

Three Wakefield bowlers have achieved the Bowls NZ Level 1 umpire qualification: Adrienne Waters, John Mills-Ramage & Richard Henley being successful in a recent training course and exam.

Focus Wakefield Reveal New Logo


The eagle eyed among you will notice that Window on Wakefield has a new masthead.

Focus Wakefield is thrilled to reveal the new village logo, designed by Wakefield artist Amanda Ledger. After several months and lots of diverse ideas from the Focus Wakefield committee, we are all so pleased with the clean new design and really appreciate the skill, time and effort Amanda generously donated to help us.

As Abraham Lincoln famously said 'You can't please all the people, all of the time, that's why I hate briefs from committees!' it can be hard to please everyone, but we hope the majority of you like this design most of the time.

It is also evident on our community Facebook page Focus Wakefield, and hopefully you will see it being used in other ways as Focus Wakefield continues to grow.

If you would like to offer your time, skills or two cents to the community, Focus Wakefield meet on the first Thursday of each month. Please email focuswakefield@gmail.com, message us on Facebook or call 541 9725 if you would like to get involved.



Hand Made Natural Skin Care

Face: Cleanser (All Skin Types)/ Dry Skin Cream/ Oily Skin Cream/ Mature Skin Cream/ Sensitive Skin Cream/ Eczema Skin Cream.

Hand & Body: Lavender Cream/ Rose Cream/ Lime Body Butter/ Sweet Orange Body Butter/ Cinnamon Body Butter.

Mum & Baby: AntiStretch Mark Cream/ Rose Cracked Nipple Oil/ Nappy Rash Cream/ Chamomile Tummy Rub.

Other: Chilli & Peppermint Cream for Arthritis/ Anti-Cellulite Cream/ Muscle Ache & Tone Cream or Oil/ Menopause Cream(Hot Flush).

For Him: Spicy Aftershave Lotion/ Shaving Rash Cream or Oil.


Who We Are

About Us

I studied Aromatherapy in Scotland, and use the oils blended into my creams. All the ingredients are 100% natural, and are blended to nourish & feed the skin & body. All face creams can be used on the body, & hand & body creams can be used on the face.

Contact Us

Phone: 03 541 8910
 Email: kahurangicottage@gmail.com
 Web: www.kahurangicottage.co.nz



KAHURANGI COTTAGE
 Natural Skin Care - Art Crafts



Hill Top Native Nursery

Propagators and Growers of New Zealand Native Trees and Shrubs
 Open for sales by appointment

Owners: Bevan & Rachael Hart
 74 Eighty Eight Valley Road
 Wakefield, Nelson 7025

Phone 03 541 8763

Phone: Bevan 027 541 8763
 Rachael 027 286 7927
 Fax: 03 541 8764



Health & Wellness Week 14-19th July

Come in and check out our product displays, Information on Diabetes, Arthritis, Stress and Sleep problems and Weight loss
 Get hot tips from our trained staff.

Get the right advice about your options from our natural health range.

And take the opportunity to get a free blood pressure check.



Wakefield Pharmacy
 4 Edward St Ph 541 8418

Wakefield Townies

Support a Wakefield Family with a Town Business - Chocolate Velvet

by Caraline Dyson

Chocolate Velvet was started in 2004 by Phil and Leanne Lash, specialising in wedding and birthday cakes. Their goal was, and continues to be, a specialised bakery producing top of the line cakes all made from scratch (no pre mixes or packet mixes). Within six months of starting they began wholesaling their cakes to cafes and restaurants, and developed a range of desserts. They quickly earned a reputation for quality along with a commitment to ensure customer satisfaction.


Although they originally operated from a commercial kitchen situated on private property, they quickly outgrew those premises. After a year long search they finally opened their purpose built Nayland Road bakery and retail shop on in December 2007.

Today they employ six staff who create, bake, decorate, develop new products, help customers, answer queries and are very passionate about what they do! Along with their famous fantastic cakes, they also make truffles, slices, cheesecakes, muffins, tarts, pies and a wide range of "ready to go" food for their shop.

Phil and Leanne moved from Richmond to Wakefield in November, and are thoroughly enjoying living here. Winter is generally quieter in their business so they are hoping to have more time to spend landscaping their property.


Chocolate Velvet, 435 Nayland Road, Stoke, Nelson

Open 6.30-16:00 Monday to Friday and 8:00-13:00 Saturday
 www.chocolatevelvet.co.nz
 Phone: 03 538 0515
 Email: enquiries@chocolatevelvet.co.nz



We make cakes for all occasions

- Birthdays
- Weddings
- Anniversaries
- Novelty Cakes
- Any Celebration



435 Nayland Road, Stoke
 Mon - Fri 6.30am - 4pm
 Sat - 8am - 1.00pm
 Ph 538 0515

Are you a Wakefield family with a business in town?

Let us know if you want your advertisement to show here



NELSON REFRIGERATION LTD

Dan Shallcrass
 027 282 0838

General Refrigeration • Heat Pump Installation
 AC Servicing • Automotive AC • 15 Yrs experience
 FUJITSU ACCREDITED INSTALLER FREE QUOTES



Queen Street Fruit & Vege

'Fresh Produce, Friendly Service'

Andrew & Laurel Ketel
 Ph/Fax 544 2633
 219 Queen Street Richmond
 Email lmassey@xtra.co.nz

Easy Parking & Entrance in Warring Carpark



Kelvin & Julie Gordon
 Owner/Operator

FORMER NZ TEAM MECHANIC

109 Rutherford St, Nelson
 Next Door to McDonalds
 Ph/Fax
NN 548 2851
 info@kelvincycles.co.nz

CYCLE & REPAIR SPECIALISTS
 ALL MAKES AND MODELS

Pedego & Smart Motion Electric Bikes




GUTHRIE'S
 collision repair specialists

Ph: 03 548 2454 Fax: 03 548 2456
RICKY HOLMES - 027 447 1407
 116 Vanguard Street - Nelson 7010

Wakefield Guides

GUIDING IN TWIN PEAKS DISTRICT



Term 2 has been a very busy term for all units and a big thank you goes to all our volunteer leaders and their helpers, we really appreciate your help and support; Vin Law, Melissa and Amberlee at Wakefield, Josie Macdonald at Brightwater, Rachel Pilcher, Josie and Sue at Waimea, Lisa Kerr, Jo Hudson-Nelson and Sharon at Waimea.

The region leaders retreat at Paretai Lodge, Lee Valley, Brightwater was a fun weekend and thanks to Josie and Sheree for co-ordinating it. We enjoyed the visit from the Soroptimist ladies and the belly dancer!

Brownie Revels takes place at Paretai on 28th June and should be a great day with nearly 50 Brownies from the region taking part.

All biscuit invoices should now have been paid to Jacqui as well as National fees and term 1 and 2 fees. If not, please contact her as soon as possible.

We will be needing a new Leader and Assistant for Brightwater Guides as Josie will be leaving at the end of the year. So now is the time to come forward if you can help with this unit which meets on Wednesday evenings in Brightwater Scout Den. They are a busy group of 11 girls who really enjoy their Guiding. This is a great opportunity for anyone interested in working with young people. Contact Josie on 544 2660 or macdonald.josie@gmail.com.

Term 3 begins on Monday 21st July with units starting back on the 23rd Wednesday and 24th Thursday. Wakefield Pippins and Brownies will be in winter quarters at the Village Hall for Term 3.

Sue Burrows
 DC Twin Peaks.

Wakefield Venturers

by Justin McRae

Heard of us? You should have. Over the past year or so we've been all over the place doing all manner of things; travelling to Hokitika, paintball, mountain biking, going to Hanmer, paintball and most importantly working through our Queen Scout Award scheme - the highest award in Scouting.



Our programmes, which we make ourselves, are always jam-packed with adventure and good times. Just this last term has been pretty busy. Our annual Rainbow to Hanmer bike ride was a big success (congrats to those that rode all the way) with the help of our new Fullah Simon Busbridge and the mighty 'Big Red Car' (thanks Simon). The highlight of this bike ride was meeting and chatting to Mark Inglis! Last weekend we embarked on a road trip to Hokitika again to visit and congratulate a new Queen Scout. We got our Holden Kingswood (with a Leyland Vanguard engine) running thanks to the time and help of our good friend Garry "the Engineer" Grant. Hopefully we'll be able to take the beast to Mudbash soon.

Small bore shooting at the local domain was great, with some of our Vents performing rather well. The Cooksey/Velocity leadership course in Hanmer was a good time as well with plenty of new friends gained. Julian and Justin led an epic Silver tramp, and Sam with his Silver Duke of Edinburgh tramp. Owen, Culainn and Ashleigh were invested in the St. John's cemetery (by candlelight), Mason invested halfway through the Wai-iti and Daniel invested in the floating trailer in Lake Tennyson. While in the middle of the Wai-iti and with the elusive mudcake finally at our fingertips, we presented Julian Eggers with his Silver Venturer Award. Friday we're staging a gaming night and the next holidays we'll be heading south to the Achievement Camp at Blue Skies in Kaiapoi, and not long after that cycling to Hokitika for Julian's Gold Expedition. Not long after that we'll be returning to Hoki for their Midwinter camp. Then in the October school holidays we'll be putting on a five day residential camp 'Out There' for other Venturers to attend.

So if you're between fourteen and eighteen and you want adventure, fun, a good laugh or just like paintball and mud cake; give our leader Sarah a call on 03 541 9481.



Community Notices

MISSING

We are missing our two cats from Totara View Road and wonder if they were adopted by another family in Wakefield.

The first is **Micky**. He is a black and white cat, short hair. Most of his body is black and he has got white gloves and socks. He disappeared in mid March.

The second one is **Figaro** - also a black and white cat. Some parts of his face are white and also he has got white socks and gloves.

They were both born 21 months ago at our place. Figaro is fixed and Micky not.

Anybody that will help to bring them home will get a home baked cake. Please contact Tami Neuman 541 9533.



FOR SALE

TWO COCKERELS:

Both 9 months old.
One is a Plymouth Barred Rock cross, the other a Light Sussex.
\$5 each.
Ph. 5418856

MISCANTHUS:

"Morning Light" and "Zebra".
1.5m tall. 1m wide.
Use as specimen plants, windbreaks, screening.
Deciduous.
Large amounts available.
Price negotiable.
Ph. 5418856

WANTED

20ft Container or moveable shed, must be water tight.
Contact Sue 5418908 evenings or 5418417 daytime

Double horse float, must be suitable for a large hack and in good condition.
It must be registered and warranted (or able to get one easily).
Contact Sue 5418908 evenings or 5418417 daytime

WANTED - ROVING REPORTERS

Window on Wakefield are desperately looking for more volunteer roving reporters.

Do you have a flair for writing or passion for stories?

Please contact us asap on windowonwakefield@gmail.com

FOR SALE

Mobile egg laying Chicken coop for 30 chickens X 2

Water tank with trailer, 1000 litre

200 litre Water tank with trailer and battery water pump

Mobile animal shelter (cows/sheep/chickens/goats etc)

Hay - lifestyle hay bales

Plastic PVC pipe for irrigation/water supply

Wire

Dairy goats (saanen toggenburg):
Nanny goat approx 5 years old, in kid
Nanny goat 8 mths
Billy goat 1.5 year (sable saanen)

Friesian/ angus cow, been inseminated (4 yrs approx)

Sheep, Suffolk/txel:
In lamb (3x hogget nearly 2tooth)
One Suffolk pure ram (3yrs)
Texel ewes4x in lamb (mixed age)
(from these 4 ewes had 9 lambs two years ago, last year and two years ago 6 lambs)

Hyline brown chickens, 2 yrs old (x30 available)

For more information on all of the items listed above, please phone or text 021 260 9987.

COTTAGE FOR RENT

One bedroom cottage for rent close to Wakefield.

Fully furnished, self contained, delightful area.

Non-smoking, no pets. Suit mature couple or single professional.

Contact: 541 9689

WORK WANTED

Experienced Accounts Person looking for 1-2 days per week office work.

References available.
Phone Claire 541 8686

TO RENT

Modern warm flat (wool insulation, double glazing and built for the sun), 1 bedroom, storage area and a vegetable garden bed.

Private location, one minute by car from Wakefield, no smoking/no pets please.

Suitable for mature person.

Please ph or text 027 3740500.



**WE NEED YOUR
FOR SALES
WANTED
OR HELP REQUESTS**

**PLEASE CONTACT
541 9005
SOME LIMITATIONS APPLY
PLEASE ASK**

Community Diary & Classifieds

WORK WANTED

Sick of doing housework, not got the time?
Give me a call.
\$25 per hr, \$20 p/h senior citizens
Sandra 541 9615

TUTOR AVAILABLE

Experienced primary school teacher, recently retired, is available for after school tuition.
Phone Carol 542 3599.

TUTOR AVAILABLE - SECONDARY

NCA English, History, Geography all levels.
Ph: Tony 541 8481

FREE

Bokashi buckets x 2, to a good home, no charge.
Ring 0272288902

WANTED

Ice-cream containers 2lt, with or without lids.
Drop off at Strawberry Patch Wai-iti or Wakefield Trading.

WANTED

Piano wanted for Wakefield Village Hall because current one has had its day.
If you have something that you think would be suitable, call Caroline 541 8491

WANTED

Wanted clean, empty 25kg feed and fertiliser bags for Wakefield Scouts. Please drop to Debbie at Wakefield Trading.

Sewing Repairs & Alterations

Hemming and Zip replacements etc
Kala Wray, ph 541 9606, 027 224 1001

FOR SALE

A dolls cradle, dolls bassinet plus bedding, dolls knitting and sewing, plus dolls.
Will make to order.
Phone Judy 5418342

FOR SALE

Books (paperbacks). Barbara Taylor-Bradford, Judith Krantz, Phillippa Gregory, Ken Follett, Sidney Sheldon and various others. \$3.00 each. Ph: 5419045.

Jigsaw Puzzles. Wasgij, Christian Riese Lassen and others. \$10.00 each. Ph: 5419045.

TO GIVE AWAY

To give away to suitable rural homes only, beautiful five month old buff bantam roosters, also buff frizzle cross roosters. Ideal for breeding, showing and great as pets. Not for eating. 541 8018

FOR SALE

Mobile sheep ramp 541 8018

FOR SALE

All steel trailer, 4ft x 6ft, new warrant and reg, \$900 ono
541 8018

MONTHLY COMMUNITY CALENDAR

JULY 2014

Tue 1	10.30 am - Wakefield Community Library open 7.15 pm - Indoor Bowls, Wakefield Village Hall 7.30 pm - Wakefield Village Hall meeting
Wed 2	9.15 am - Craft Group, Wakefield Village Hall 9.30 am - Wakefield Plunket Playgroup, Methodist Church Hall
Thurs 3	9.30 am - Wakefield Art Group, Wakefield Village Hall
Fri 4	2.30 pm - Wakefield Community Library open
Sat 5	9.30 am - Wakefield Community Toy Library open
Mon 7	1.00 pm - Indoor Bowls, Wakefield Village Hall
Tue 8	9.45 am - Live Well Stay Well, Wakefield Villa Tearooms 10.30 am - Wakefield Community Library open 7.15 pm - Indoor Bowls, Wakefield Village Hall 7.30 pm - Wakefield Community Council, St Johns Church
Wed 9	9.15 am - Craft Group, Wakefield Village Hall 9.30 am - Wakefield Plunket Playgroup, Methodist Church Hall
Thurs 10	6.30 pm - How Dogs Learn Seminar, Wakefield Methodist Church
Fri 11	2.30 pm - Wakefield Community Library open
Sat 12	9.00 am - Wakefield Market Day, Village Green 9.30 am - Wakefield Community Toy Library open
Mon 14	1.00 pm - Indoor Bowls, Wakefield Village Hall
Tue 15	10.30 am - Wakefield Community Library open 7.15 pm - Indoor Bowls, Wakefield Village Hall
Wed 16	9.15 am - Craft Group, Wakefield Village Hall 9.30 am - Wakefield Plunket Playgroup, Methodist Church Hall
Thurs 17	12 noon - Outreach Lunch, St Johns Worship Centre
Fri 18	2.30 pm - Wakefield Community Library open
Sat 19	9.30 am - Wakefield Community Toy Library open
Mon 21	10.00 am - Mainly Music, Wakefield Village Hall 1.00 pm - Indoor Bowls, Wakefield Village Hall 7.30 pm - 100th ANZAC Service Meeting, Wakefield Fire Station
Tue 22	10.30 am - Wakefield Community Library open 7.15 pm - Indoor Bowls, Wakefield Village Hall 9.45 am - Live Well Stay Well, Wakefield Village Hall
Wed 23	9.15 am - Craft Group, Wakefield Village Hall 9.30 am - Wakefield Plunket Playgroup, Methodist Church Hall
Thurs 24	9.30 am - Wakefield Art Group, Wakefield Village Hall
Fri 25	10.00 am - Modified Tai Chi, Wakefield Village Hall 2.30 pm - Wakefield Community Library open 7.30 pm - County Players Production, Wakefield Village Hall 7.30 pm - Womens Biz, Venue TBA
Sat 26	9.30 am - Wakefield Community Toy Library open 7.30 pm - County Players Production, Wakefield Village Hall
Mon 28	10.00 am - Mainly Music, Wakefield Village Hall 1.00 pm - Indoor Bowls, Wakefield Village Hall 7.30 pm - Annual Community Event Meeting, Wakefield Village Hall
Tue 29	10.30 am - Wakefield Community Library open 7.15 pm - Indoor Bowls, Wakefield Village Hall
Wed 30	9.15 am - Craft Group, Wakefield Village Hall 9.30 am - Wakefield Plunket Playgroup, Methodist Church Hall 7.30 pm - County Players Production, Wakefield Village Hall
Thurs 31	9.30 am - Wakefield Art Group, Wakefield Village Hall
AUGUST 2014	
Fri 1	7.30 pm - County Players Production, Wakefield Village Hall 10.00 am - Modified Tai Chi, Wakefield Village Hall 2.30 pm - Wakefield Community Library open
Sat 2	9.30 am - Wakefield Community Toy Library open 7.30 pm - County Players Production, Wakefield Village Hall

Community Notices

MAINLY MUSIC

Wakefield Village Hall.
Mondays, 10.00am, cost \$3.00 per family.

This is a time for parents and children to enjoy music, song, dance and lots of laughs.

Term time only. Contact Wendy Milson 544-5494.

ADULT CARDIO TENNIS COACHING

If you are keen on learning to play Tennis or brush up on your skills, adult coaching is available through winter, day or night at Wakefield, Waimea, & Hope Tennis Clubs. Racquets are available.

Contact Ngaire
thecalders@xtra.co.nz
0272799938

WAKEFIELD CRAFT GROUP

My craft group is going strong on Wednesdays so still only \$2.00, cozy room with heaters and hot coffee or tea supplied. [See larger ad to the right]

WAKEFIELD INDOOR BOWLS

Weekly new season starting:
Mondays from April 7th @ 1.00 pm, and
Tuesdays From April 8th @ 7.15 pm

At the Wakefield Hall

Roll up, come and have a go. Suitable for young and old, free training, simple rules, enjoyable company

Heated Wakefield Hall for the colder winter nights

For more information please contact :
Ren Olykan on 541 8275

WAKEFIELD PLUNKET PLAYGROUP

Held every Wednesday morning at the Methodist church hall on the corner of Edward and Arrow Street, 9.30am to 11.30am

Everyone welcome to attend for a cuppa, morning tea and a chat.

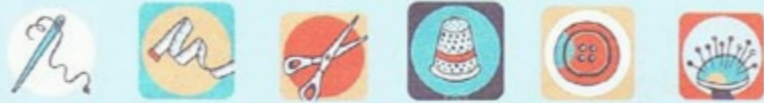
UKELELE PLAYERS

HAVE SOME FUN
Would you like to enjoy playing the ukelele and singing together on a regular basis.

Please contact me on 027 3740500 or email sonjal@ts.co.nz for an initial get together to set up a group.

Wakefield Craft Group

Come and join the ladies craft group
Wednesday mornings in the Village hall supper room
9.15am - 12pm.
Bring any project - sewing, knitting, crochet etc.
and join us for coffee and company
\$2 per morning
Phone Judy on 541 8342



Are you a beginner, or have never drawn or painted before?

Come and give it a go.
Join our very friendly group

Every THURSDAY of the School Term
9.30 am – 12.30 pm
Wakefield Village Hall – Supper Room
\$4 per session/cup of tea included

For more information contact:
Sandra - Phone: 5419 615, or Sonja – Phone: 5418 176

WAKEFIELD MARKET DAY

Saturday 12th 9 to 1pm. Come celebrate mid winter. Free lights and cake. Enjoy the music, good company, plenty of treats to fill in winter days. Plants, books, magazines, large array of goods. For sites ring Jean 5418154.

FOXHILL TENNIS COURTS

658 Wakefield-Kohatu Highway (at rear of Rutherford Memorial Hall).

FREE PUBLIC USE.

Re-painted lines, nets up ready to go, for twilight practices and late summer fitness.

Managed by Rutherford Memorial Hall (Foxhill) Assn Inc. for TDC
Erica Short
Secretary/Treasurer 541 8882

Community Directory

Citizens Advice Bureau
548 2117 - 0800 367 222

Guiding Co-ordinator
Sue Burrowes 541 9689

Lord Rutherford Memorial Hall Foxhill
Helen Pullan 541 8058

Pigeon Valley Steam Museum
Alan Palmer 027 319 7427

Rural Ramblers
Carolyn Mason 541 9200

Spring Grove Drill Hall
C. Pike 542 3904

Totaradale Golf Club
Jacquie 541 8030

Wakefield Anglican Church – St Johns
Meet Sun 9.00am; 10.30am
Rev. Allan Wasley 541 8883

Wakefield Brownies
Veronique Law 541 9190
nvaslaw@gmail.com

Wakefield Community Library
Wendy Gibbs 541 8490
Pam Dick 541 8392
Hours - Tues 10.30 -11.30am
Friday - 2.30 - 4pm
Excluding Public Holidays

Wakefield Football Club
Richard Malcolm 541 9429

Wakefield Medical Centre
541 8911

Wakefield Pharmacy
5418418
wakefield.pharmacy@paradise.net.nz

Wakefield Playcentre
Contact: 541 8866

Wakefield School
Edward Street 541 8332

Wakefield Scout Group
Angela Burke 541 9223

Wakefield Toy Library
Saturday 9.30-11.30am
Chris Gaul 541 8148

Wakefield Volunteer Fire Brigade
DCFO Fritz Buckendahl 027 224 4162

Womens Biz
Justyne McGaveston 522 4488
Sonia Emerson 541 9005

Country Players (Drama)
Philip Calder 541 8442

Junior Country Players
Dixie McDonald 541 8862

Nelson Vintage Engine & Machinery Club
Allan 027 319 7427

Pinegrove Kindergarten
03 542 3447

Rural Women
Dawn Batchelor 542 3628

St Joseph's Catholic Church
Sun 8am, Wed 10am
Fr David Gruschow 544 8987

Waimea Sheepdog Trial Club
Colin Gibbs 541 8435
gibbs@ts.co.nz

Wakefield Book Group
Mahala White - 541 8933 or
Sheila Kennard - 541 8860

Wakefield Bush Restoration Society
Doug South 541 8980

Wakefield Craft Fair
Leanne and Glen Turner
541 8306

Wakefield/Brightwater Guides
Josie Macdonald 544 2660
macdonald.josie@gmail.com

Wakefield Methodist-Presbyterian Church
Meet 1st & 3rd Sundays 11am
Rev Paul Tregurtha 544 8394

Wakefield Plunket
Donna Todd 541 8583

Wakefield School/ Community Swimming Pool
Contact Phill Platt on 027 231 7610

Wakefield Smallbore Rifle Club
Ian Hutchings 541 8342

Wakefield Village Rest Home
Gerri Harvey 541 8995

Wanderers Sports Club
542 3344

Window on Wakefield Advertising - 541 9641
Genie & Lindsay Bradley

Focus Wakefield
Diane Blackburn 541 9725

Just Gymnastics
Linda Mace 546 6013

NZ Postcard Society Inc.
Doug South 541 8980

Richmond Lions - Wakefield Rep
Ivan Burrowes 541 9689

Spring Grove Church of Christ
Meet Sundays 10am
541 8011

Top of the South Rural Support Trust -
gibbs@ts.co.nz
Colin Gibbs 541 8435

Waimea Sth Historical Society
Jeannine Price 542 3033

Wakefield Bowling Club
Margaret Eames 541 8316

Wakefield/Brightwater Book Club
Pauline Coy 542 3994
paulinebc@gmail.com

Wakefield Community Council
Allan Wasley 541 9622

Wakefield Indoor Bowls Club
Ren Olykan 541 8275

Wakefield Pippins
Veronique Law 541 9190
nvaslaw@gmail.com

Wakefield Preschool
Contact: 541 8086

Wakefield School PTA
Sue Ketel
ptawakefield@gmail.com
03 541 8908

Wakefield Tennis Club
Ngaire Calder 541 9419

Wakefield Village Hall
Rob Merillees 541 8598

St. John's Worship Centre
Caroline Gibbs 541 8491

Waimea Plains Junior Football Club
Grant de Joux
542 4452

CIVIL DEFENCE - WAKEFIELD AREA COMMUNITY RESPONSE

In the event of an emergency, your first task is to ensure the safety of your own home, family and neighbours. Once you have attended to this, if you have **specialised skills/ equipment**, and/or feel you can assist others; or require assistance yourself, please make your way to the Welfare Centre which will be at the St Johns Worship Centre in Edward Street [unless notified otherwise].

Please note that the existence of a Welfare Centre does not absolve each individual from their **responsibility to be personally prepared**.

You should ensure that you have your own **survival kit** in place, and that you are able to be **fully self sufficient for at least three days**.

In the event of an emergency, for urgent public messages, tune in to:
More FM 94.1, Classic Hits 89.8, Fresh FM 95.4



IF YOU HAVE A COMMUNITY NOTICE OR UPCOMING EVENT THAT YOU WANT ADVERTISED, PLEASE SUBMIT YOUR MATERIAL BY THE 25TH OF EACH MONTH

EMAIL TO WINDOWONWAKEFIELD@GMAIL.COM OR PHONE 03 541 9005

4



FREE

Celebration Cake Tin
It's cool, it's fun &
it could be yours.

Spend \$30 or more*, and you will receive
our 90 years Celebration Cake Tin.



90 years strong
1924 - 2014

AS WE ALWAYS HAVE, AND ALWAYS WILL BE - NEW ZEALAND'S FAVOURITE GROCER!

*Cake tin promotion runs from Monday 30th June - Sunday 20th July 2014 or while stocks last. One tin giveaway per single transaction spend of \$30 or more (excluding tobacco, cigarettes and Lotto). For full terms and conditions, ask in-store or visit foursquare.co.nz.