



# window on **wakefield**

Your Local News

## Community News for the Wakefield Area

### INTER-REGIONAL PRIMARY & INTERMEDIATE SCHOOLS CROSS COUNTRY CHAMPS 2017

by Anne Malham

On 28th September 2017, three young Wakefield School lads represented "Team Tasman" in the Inter-Regional Cross Country Championships, held at Ashbury Park, Timaru. They were Noah Lausen, Jack Burson and Lucas Malham.

To make it into this "Team Tasman", they each had to first run their hearts out, and place well in three knockout rounds prior. First there was the Wakefield School Cross Country, back in June, followed by Cluster Schools Cross Country against the best from Brightwater, Hope, Appleby, Ranzau and Wakefield Schools. Finally, there was the Inter Schools Cross Country, running against the fastest from the Nelson/Tasman region.

The boys all trained for two months, including two compulsory team trainings per week, coached by Ben Thurlow, Phil Costly, and Jodie and Nathan Fa'avae, at various locations around Nelson/Tasman. This was invaluable to all the kids and they enjoyed it too.

Team Tasman was made up from some 57 kids that placed top ten in their age group at the Inter Schools race, from Year 5 through to Year 8, boys and girls. They each ran two to three kilometres, depending on age. This was the first time the competition had ever been held in Timaru and the trip was fully self-funded, so the boys' parents got together with the Wakefield School PTA and had a BBQ and bake sale to raise funds.

Timaru hosted around 320 pupils from Wellington, Canterbury and Tasman, as well as others from elsewhere around the country. Noah, Jack and Lucas enjoyed the course. The surprise of giant hay bales to jump was at first intimidating but "quite a fun challenge", said the three. "It was really hard, but such a good experience", they agreed. There were many nerves, sickness and vomiting and excitement on race day.



Final placings on the day were: Noah, Year 6 boys 35th out of 48, Jack, Year 5 boys 23rd out of 40 and Lucas Year 5 boys 36th out of 40. They were all very proud of their fantastic achievements, as were all of their parents who were there with them in full support.

They left with new friends made, the "Never Give Up" school value in their hearts, and a shiny new medal for memories.



## WINDOW ON WAKEFIELD

### How it works...

Window on Wakefield is produced and published by Focus Wakefield, a subcommittee of the Wakefield Community Council. All businesses advertising in this publication incur a cost for the advertising space allocated, depending on the size and location of the advertisement. The funds raised from this advertising are used to cover the costs of printing Window on Wakefield. No parties are paid for the time involved with editing, coordinating and publishing this paper. It is the intention that if surplus funds are raised from advertising, that these will be held in a separate bank account to be used for other community projects. The bank reconciliations and financial reports related to this account will be made available to any person who wishes to view them.

### Content...

Window on Wakefield is a community newspaper, and as such, we look forward to having articles and content contributed by our community. If you wish to submit a one off article, or suggest some regular content, please make contact with Sonia on 541 9005 or email [windowonwakefield@gmail.com](mailto:windowonwakefield@gmail.com) and read the Terms and Conditions below.

We try to ensure information published is truthful and accurate, but do not check the facts of the articles and therefore cannot attest to their validity. While all reasonable care is exercised, we do not accept liability for any loss whatsoever incurred through our errors, acts or omissions in relation to the content of an article, or for any consequences of readers relying on the information published. Opinions expressed by contributors do not necessarily represent the views of the Focus Wakefield group, nor are they necessarily endorsed by the Editor or Publisher.

### Advertising...

If you wish to advertise in Window on Wakefield, please make contact with Genie or Lindsay on 541 9641 or email [enquiries@wakefieldprint.co.nz](mailto:enquiries@wakefieldprint.co.nz) and read the Terms and Conditions that will be provided on the rate card.

### TERMS AND CONDITIONS REGARDING PUBLISHING OF CONTENT

- a. All articles and other content submitted for publishing must disclose the author's name or where the article/content is contributed by a community group, then that community group's name.
- b. All images should be provided to us in a high quality PDF format. We take no responsibility for the quality of reproduction for images that are not supplied to us in this format.
- c. If you wish to make changes to an article or content already submitted, please ensure these are communicated to us before the relevant deadline date.
- d. When you submit an article or other content for publishing you:
  - agree that the submitted material and/or images can be reproduced by the Editor or Publisher at any time without your prior approval
  - agree that all photographs submitted for publishing are provided free of charge, and the approval to print has been obtained from any persons shown in the photo - this is the responsibility of the person submitting the photo
  - acknowledge that all material is held by us at your risk and is not insured by us. Material will only be returned on request and may otherwise be destroyed by us
  - warrant and undertake that no statement, image, representation or information contained in your supplied article or content:
    - \* is or is likely to be misleading or deceptive;
    - \* is at all defamatory, in breach of copyright, trademark or other intellectual or industrial property right;
    - \* is otherwise in breach of the Copyright Act 1994, Defamation Act 1992, or any provision of any Statute, Regulation or rule of law.
- e. We reserve the right to decline the publication of any article or any content whatsoever on any grounds that we in our absolute discretion see fit.



**Jill O'Brien**

R D 1 Wakefield  
Rural Mail Contractor  
**FOR ALL YOUR  
MAIL NEEDS**

Stamps, Parcels, Freight  
Phone 541 8963  
Mobile 027 324 2126

**DID YOUR BUSINESS  
MISS OUT THIS TIME**



**DON'T DESPAIR  
WE HAVE SAVED  
A SPOT FOR THE NEXT  
PUBLICATION  
JUST FOR YOUR BUSINESS**

**Give us a call  
541 9641  
or  
Email  
[info@wakefieldprint.co.nz](mailto:info@wakefieldprint.co.nz)**

## NEXT EDITION

**Due out the first full week of each month**

**All Advertising to be submitted by the 20th of the Month prior**

**All Content to be submitted by the 23rd of the Month prior**

**For Advertising please contact Wakefield Print Ltd 541 9641**

**For Content please contact All Accounts Matter Ltd 541 9005**



# In The Bush

First time ever that we have had to cancel our scheduled weeding bee for October. This was mainly due to the school holidays but on the other side of the coin amazing grandparents, taking special time out with grandchildren and family.

Our next weeding/maintenance bee will be Saturday, 11th November, 2017 from 10 am until noon. Give me a call and come join us.

We have been doing some extra fencing around the bush on the lookout hill to protect it from the cyclists tracking it as a downhill "event". The downside they have killed off many of the young seedlings and undergrowth in the areas they rode in.

Spraying has been done along the track edges and drains. We have also finished our track resurfacing for the year and will recommence next winter as we need the overcoat to be wet in order to compact it satisfactorily.

## Update on the Edward Baigent Bush Memorial Scenic Reserve

By the time you receive this the submissions hearings will have been held (Wakefield - Monday, 30th October), so we will wait with interest for the decisions made to come out into the public arena.

I am personally "doubting" a positive outcome for Edward Baigent, mainly due to the fact that even with repeated petitioning from our community before it was entered as part of the submission process of the Freedom Camping Bylaw Submissions and continued petitioning to close this Scenic Reserve, there has been no action taken. The Tasman District Council have totally disregarded, even in very wet weather, and over the winter period to even close their "token" gate to all camping activity.

With the heavy rain it became a bog. Camping numbers are again steadily on the increase and complaints of overflowing rubbish receptacles, food thrown on the ground and the list goes on!

Then to top it all off (and a first for me in all my 17 years as President) around the 13th of October, a trailer load of garden rubbish was dumped in the actual Reserve and an extra large white bag of garden weeds flung into the bush.

Well nothing much left for me to say on that one except "if the Tasman District Council is allowing our Edward Baigent Bush Memorial Scenic Reserve to look like a tip then folks are going to treat it like one."

Damien O'Connor, MP for West Coast Tasman, has written an official complaint in a letter to Full Council regarding their inactivity in responding to the many concerns raised by our community over a great period of time and also the personal meetings and issues he himself has brought to their attention.

With the large increase of campers moving in yet again I have asked all those folks contacting me to telephone their concerns direct to the Tasman District Council. When you reach the receptionist tell her you wish to lodge an OFFICIAL COMPLAINT. This will then be taken seriously. You will be asked the relevant questions and then it will not get lost in any muddy puddle.

The Official Complaint must then be processed and it makes its way much higher up the chain of command.

Thank you for that wee tip from one very concerned village resident.

Regards, Doug South  
President Wakefield Bush Restoration Soc Inc (since 2000)  
Telephone 541 8980 Mobile 027 907 2879  
Email [tuiville@xtra.co.nz](mailto:tuiville@xtra.co.nz)



**Hair Raisers**  
Magic Can Happen  
Ph 541 8312

**+**  
**WAKEFIELD PHARMACY**  
the caring pharmacy

**f** Join us on our **FACEBOOK** page and be in the draw to win our monthly prize.

Shop hours -  
Monday 8.30am to 5.30pm - Tuesday 8.30am to 5.30pm - Wednesday 8.30am to 7pm  
Thursday 8.30am to 5.30pm - Friday 8.30am to 5.30pm - Saturday 10am to 12pm

4 Edward Street, Wakefield - Phone 03 541 8418 - Fax 03 541 9100  
[www.wakefieldpharmacy.co.nz](http://www.wakefieldpharmacy.co.nz)

# The Way We Were

## 175 YEARS OF EUROPEAN SETTLEMENT IN NELSON 1842-2017

### THE VOYAGE OUT: "IT'S ONLY A LITTLE RASH, DOCTOR"

Prepared for the Waimea South Historical Society by Roger Batt

If they are to be judged by the responsibilities which they shared, the two most important people on the emigrant ships were the captain and the surgeon (doctor). Both held the fate of all the passengers and crew in their hands – literally life and death: the captain for their safe passage; the surgeon for their health and well-being.

The duties of the surgeon could be described in detail – as in the case of the unfortunate Dr Bush (see issue 60) who at the age of 37 was given 37 responsibilities – and also in very general terms. It was understood and accepted that any decisions regarding the welfare of the passengers which the captain did not make would become the responsibility of the surgeon. While the captain was employed to sail the ship safely to its destination, the surgeon's role was to ensure that all on board reached that destination alive. The title of Surgeon-superintendent given to Millen Coughtrey on the Chile made it clear that "he was there not merely to cure the migrants of their ills, but also to supervise them. ... the maintaining of discipline among them and consequently with the enforcement of the regulations for securing cleanliness, regularity and good conduct." (Hastings, p.123)

All this sounds fine – but in practice it was not so easy. Life was made particularly difficult for Coughtrey by the slovenly behaviour of some passengers who refused to clean their personal living spaces and who "defecated and urinated in the space around their bunks" (Hastings, p.129) in complete disregard for the health and general well-being of the other passengers – not to mention the bad odours this created for everyone in the confined spaces of steerage. While we all know about the importance of personal hygiene, this was not a "given" in the 19th century.

Surgeons were paid by results and there was a strong economic incentive to keep people alive and well. "The position of surgeon afloat was both responsible and well paid. He got a free passage for himself and his family as well as a fee for the voyage of between \$50 – \$100 plus \$1 for everyone he landed alive over the age of 14 years, 50 cents for those between 7 and 14 years and 34 cents for those between 1 and 7 years old. ... On the other hand his pay was docked by \$2 for everyone who died during the voyage – adults or children." (McLean p.173)

The most common infectious diseases which had low survival rates were: measles, scarlet fever (scarlatina), whooping cough, smallpox and typhus. This is why it was so important for the passengers to be given a medical examination before the voyage began but given the pressures to cope with large numbers in a short space of time and the strong desire of the emigrants to sail ("It's only a little rash, doctor," – McLean p.42) it is unsurprising that outbreaks of disease were common. Between the 1840's and the 1870's death rates did improve – mainly because of a stricter regime of ship cleanliness than any improvements in medicines. (Hastings p.127)

The worst mortality rate on a voyage to New Zealand in the 1870's was on the England in 1871 when 16 percent of the passengers died of smallpox and measles. Doctor Leigh was obviously guilty of incompetence and a dereliction of duty. He was placed under arrest when the ship reached Wellington and handed over to the authorities after specific complaints about the deaths of two children. (McLean p.175)

"Too many doctors on the emigrant vessels were arrogant, incompetent and a little too fond of the bottle. They were obviously failures in their own country for, if a doctor was doing well in Britain, why would he want to emigrate to a colony at the farthest end of the earth?... The doctor on the John Duncan, which brought 229 settlers to Auckland in 1863, tried to cut his throat. He couldn't even do that properly and the captain and one of the passengers had to use a sail needle and twine to sew him up. Two weeks later the doctor was back on duty!" (McLean p.174)

It was in the interests of both the surgeon and the captain to see that the passengers were kept well and happy because they knew that "at the end of each voyage, they could present petitions and complaints to the immigration commissioners. ... aware that they could be censured, have their gratuity cut or even be banned from the New Zealand run if a complaint were upheld." (Hastings p.169)

But there were good doctors such as Frederick Richardson on the Dominion for Canterbury "who, on one time, had 42 children down with measles, chicken pox or whooping cough, all of which were contagious and could be fatal. There was only one death on the voyage." (McLean p.174)

"The Otago Daily Times summed up the qualities necessary for a good surgeon-superintendent: 'The weight of responsibility that devolves upon them is enormous and is not to be borne by any but the strong shoulders of clever men of good administrative capacity, and earnest in the work they consent to undertake.'" This having been said, it must also be noted that given "The degree of difficulty was so high ... it is hardly surprising that a number of men fell short of the mark." (Hastings p.170)

#### Acknowledgements:

Allan, Ruth *Nelson a history of early settlement* AH Reed, 1965  
Hastings, David *Over the Mountains of the Sea – Life on the Migrant Ships 1870-1885* Auckland University Press, 2006  
Simpson, Tony *The Immigrants – The Great Migration from Britain to New Zealand 1830-1890* Godwit Publishing, 1998  
McLean, John *Voyages of the Pioneers to New Zealand 1839-85* Winter Productions 2015  
Buckley, Barry F. *Sails of Suffering - The story of the "Lloyds" an original emigrant ship to Nelson 1841-42* Napier, NZ: B.F. Buckley, 1990



#### Cocaine for children?

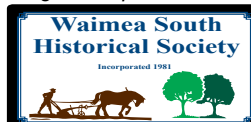
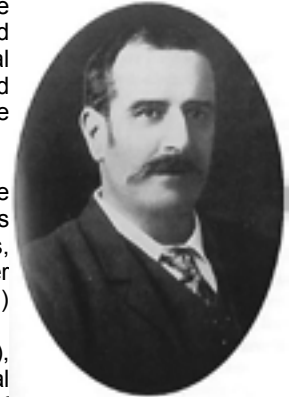
Cocaine was legal, even as late as this ad (1885), and was not considered harmful in moderate doses. Many other drugs, now restricted by law, were also legal then, including opium, which was sold under city permit on the streets of Victoria.

In the nineteenth century many substances were used as medicines, some of which are now known to be harmful over the long term, such as mercury and lead. "Patent medicines", like these Cocaine Toothache Drops, were very popular and required no prescription; they were indeed "For sale by all druggists."



Above: Dr George F Bush of Lloyds

Below: Dr Millen Coughtrey of the Chile



Explore the past with us  
[www.waisouth.wordpress.com](http://www.waisouth.wordpress.com)

# Webby Family Reunion

Media Release September 4, 2017

## Webby Family Reunion Set for March 2018

Members of the Webby family, who trace to original settlers Edward and Mary Webby/Whibbey, will gather in Nelson in March 2018 for a family reunion. Organiser Jacquie Webby, who also wrote the definitive history of the family entitled, "The Webby Family – tracing the history of one of Nelson's founding families", says initial expressions of interest indicate an excellent response to the event, which will be held on March 16, 17 and 18, 2018.

"We sent out initial expressions of interest in a Webby Family Reunion when the book was posted earlier this year and to date, we have family members coming from both North and South Islands, Australia and the USA," Jacquie Webby says.

The event will include visits to properties which are central to the history of the Webby family, a family reunion dinner and two special events in Richmond, one being the unveiling of the headstones on the graves of Edward and Mary Webby, at Richmond Cemetery. "We are just finalising the second big event in Richmond and will release details as soon as they are confirmed," Jacquie Webby says. A visit to Port Nelson, close to where the new settlers first arrived, will conclude the three-day event.

Edward Webby arrived on the *Whitby* in 1841, and his wife, Mary (nee Pike), on the *Lloyds*, in 1842. Although she had left England with two young sons, three-year old John and one-year old George, both died on the voyage. An earlier child, John, had died in England before the pair left Somerset for a new life in New Zealand. After their arrival in Nelson, a further 11 children were born, six sons and five daughters.

Family members are being encouraged to bring family memorabilia, including photographs, to the event, where it will be compiled onto a Webby Reunion DVD. "So far, we have some really interesting items and photographs which will be displayed and recorded at the event," Miss Webby says.

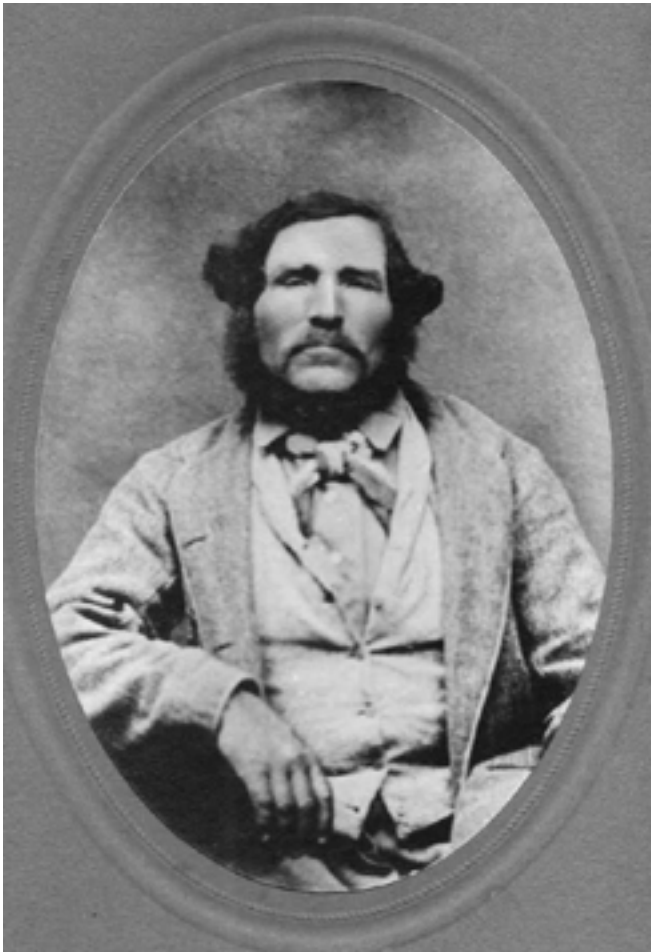
The search is also on for a possible Webby family Bible. "I cannot say for sure that one ever existed, but chances are it did and maybe still does," Jacquie Webby says. "If anyone knows anything about a possible Webby family Bible, I would like to hear from them. It may contain some further information on the lives of these first settlers."

"Family Bibles not only recorded events in the lives of families, including births, deaths and marriages, they were often used to teach reading and writing. Maybe someone knows something about it, I hope so," she says. Edward and Mary Webby emigrated from England with their surname spelt Whibbey. It was changed on arrival in Nelson for unknown reasons, possibly the way it was pronounced.

Anyone who would like further information on the reunion, can contact Jacquie Webby, email [jacquiwebby@gmail.com](mailto:jacquiwebby@gmail.com) or phone 0274 769 750 or 03 434 2530.

*Edward Whibbey Webby*

*Mary Pike*



# Health

## Skin Cancer

by Dr Mark Fry

Summer is coming and while I don't want to spoil the fun I would like to remind people about skin cancer. It is the most common cancer in New Zealand and unfortunately we have amongst the highest rates in the world.

It is largely preventable - over 90% of all skin cancer cases are attributed to excess sun exposure. It is important to detect skin cancer early, especially melanoma. Early detection gives the best chances of successfully treating skin cancer.

### Types of skin cancer:

**Melanoma** - the most serious form of skin cancer, causing over two thirds of skin cancer deaths.

**Squamous cell carcinoma (SCC)** - easily treated if found early but can be fatal if left untreated.

**Basal cell carcinoma (BCC)** - the most common and generally the least dangerous skin cancer. BCC can be serious and require surgery if left untreated.

### Causes of skin cancer:

The most common cause of skin cancer is too much exposure to ultraviolet (UV) radiation from the sun. People of all ages and skin colours can be diagnosed with skin cancer but those at a higher risk are people who have:

- Fair skin or red or fair hair
- Fair skin that burns easily no matter what hair colour
- Had one or more severe sunburns - especially in childhood or adolescence
- Used sunbeds, particularly at a young age
- A family history of melanoma (parent, brother, sister or child)
- Large irregularly shaped or uneven moles
- A large number of moles

### Prevention of skin cancer:

If people protect their skin and avoid sunburn throughout their lives the risk of skin cancer is reduced. It is important to be SunSmart in the months between September and April, especially between the hours of 10am and 4pm when the UV radiation levels are very high. In winter it is also important to be SunSmart at high altitudes and around snow and water.

### Steps to being SunSmart:

Slip - into the shade where possible.

Slip - on some protective clothing, ie shirt with collar and long sleeves and trousers or long-legged shorts.

Slop - on sunscreen that has an SPF of at least 30 and apply 20 minutes prior to sun exposure.

Slap - on a hat that protects your face, head, neck and ears.

Wrap - on some close fitting sunglasses.

### Symptoms and diagnosis of skin cancer:

Finding skin cancer as early as possible is the key to successful treatment. You should speak to your health professional if you have a mole, freckle or spot that:

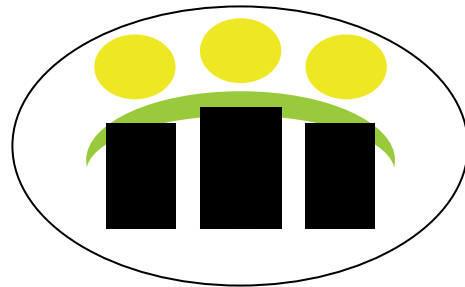
- Is new or changing.
- Does not heal.
- Looks different from others around it.
- Has changed in size, thickness, shape, colour or has started to bleed.

We also encourage regular "skin checks" as an effective way of detecting lesions early and improving outcomes. We ask that these are booked as a dedicated appointment to allow enough time to do this properly.

### Treatment of skin cancer:

This depends on the lesion, location and patient factors. It can include application of special creams, cryotherapy (freezing), shave excisions (without sutures) and full excisions (with sutures). Both Wayne and Mark have done extra training in skin cancer medicine and are now accredited doctors of the Skin Cancer College of Australasia. We are well equipped and can treat most skin cancers at the Wakefield practice. We discuss treatment options and costs with all patients and refer both publically and privately when necessary.

Enjoy summer but be SunSmart and if you are worried about a spot then come and have it checked out.



## Wakefield Health Centre

Surgery hours:

Monday to Friday 8am – 5:30pm

Wednesday 8am – 7pm

**New Enrolments Welcome**

**Phone 541 8911**

**12 Edward St Wakefield**



# Reaping a Harvest

by Ewout Aarsen

We have been asked to write a short article about our children's seedling venture, Rsons Seedlings, for our wonderful local mag.

The seedling business had its genesis six years ago as the children were helping us to get ready for our own vege garden. As we were sowing the seeds, one of the boys had a eureka moment and decided that this would be a fantastic way to earn some extra money, selling them door to door. We now have six children, and although initially it was just a little venture for the two oldest boys they are now all involved. The children generally do most of the work with a bit of prodding and help from Mum and Dad. They have learned over time which seeds take shorter or longer to germinate as this is critical to having them ready to sell at the same time.

In July they start sowing the slower germinating seeds and gradually continue sowing and planting out until the middle of September. By then every available space in the house and on the deck outside is taken up by plants, even our bedroom floor! Many trips are made to the refuse shop to collect and recycle seedling punnets. Thankfully we have kind people who save them up for us too and leave them at our letterbox.

As a home educating family this has been a wonderful exercise for the children to be involved in as it has taught them so many things from practical skills, such as plant husbandry to business skills - calculating costs and profits, planning ahead and making up a budget. Also dealing with crisis situations when things go pear-shaped (this happens more often than you may think, such as when we had an unplanned frost, or the toddler tips over the seed trays!). Then there is learning work ethic - the need to continue and finish the job to its completion - the plants aren't going to walk out the door by themselves!

As a reward the children have been able to enjoy the fruits of their labours, after the mandatory portion going into their savings account and 10% to a charity of their choice they have been able to pay for special treats for themselves such as lego, a swing set and mountain bikes. For the last two years they have been saving all the money raised to help Mum and Dad pay for a family trip overseas to visit their grandparents in the not too distant future, which we are all looking forward to with much excitement.

This little venture could not have worked without the wonderful support from the residents of Wakefield and Brightwater, and on behalf of the children, I would like to thank you all for your support and the many words of encouragement the children have received. They have met many fantastic people over the years which has made it a real joy to be part of this community.

## Mike Lewis Shearing

Lifestyle block shearer  
available

Sheep/Alpacas

All areas covered

Ph 03 541 9794



The children would like to thank all those that have bought plants and hope you all reap an abundant harvest.



Wakefield  
**PRINT** Ltd

DESIGN BRAND PRINT & PROMOTE YOU



Your Local Team: Genie & Lindsay

Ph: 03 541 9641 E: info@wakefieldprint.co.nz

DESIGN BRAND PRINT & PROMOTE YOU!

**southfuels**  
Spring Grove

Check our board – we're 6c cheaper everyday – no voucher or card required, no minimum spend

Fuel up at Southfuels Spring Grove and help support Wakefield School.



Every time you fuel up 1 cent for every 2 litres purchased goes back to the school by way of a Southfuels Donation

**24/7 Outdoor Payment Terminal**

Available with all eftpos, z card, major credit cards



Ph **541 8444**

Fax 541 8445

Main Rd North

Wakefield, Nelson

springgrove@xtra.co.nz

The  
**Vet**  
Centre

Whether you have cattle, horses, dogs or cats, the staff at the Vet Centre always endeavour to treat each animal as an individual for personal patient care. Let us help you to treat your animals with the quality care they deserve.

For a happier, healthier animal, family and lifestyle come see us at The Vet Centre Richmond.

**Our services include**

- Large animal and Equine services
- Small animals furry and feathered
- Surgery and dental procedures
- Digital x-ray and Ultrasound
- Free Travel to Tapawera on Thursdays
- Puppy Classes and nutrition consults and so much more!



**24 hour emergency 03 544 5566**

[www.vetcentre.net.nz](http://www.vetcentre.net.nz)

Richmond Clinic - Gladstone Road 03 544 5566

Motueka Clinic 03 528 8459 and Mapua Clinic 03 540 2329

**Keep an eye on our promos on Facebook**

*Refresh Spa*

QUALITY PRODUCTS  
PASSIONATE PROFESSIONALS  
HAIR | NAILS | BEAUTY

Sharyn Simpson and Shannen Brown would like to announce that Shannen has now taken over Refresh Spa.

Sharyn would like to take the opportunity to thank everybody for their continued support over the last two and half years, and wishes Shannen well as she ventures into business ownership.

Shannen looks forward to seeing you all as the new owner of Refresh Spa.



PH: 541 9099 30 WHITBY WAY, WAKEFIELD

Find us on



# Live Well Stay Well

by Margaret Clark

November is the last month that this group meets for the year. Live Well Stay Well is a health and social group that meets fortnightly in Wakefield or Brightwater from 9.45 - 11 am. All interested are welcome to attend especially if you are new to the village. Coming up this month:

**Tuesday, November 14th** - our last outing for the year visiting Pic's Peanut Butter factory in Stoke followed by a lunch at "Cafe on Saxton" at 12 midday. You will need to have registered for this event so if you have not please get in touch with Yvonne or Margaret.

**Tuesday, November 28th** - last coffee and chat, 9.45 am at the Wakefield Villa, then off for a walk somewhere for the energetic.

For 2018 we plan to start our fortnightly get-togethers after the Easter Break. Any enquiries for transport or to go on our email list to let you know what's happening, please call Margaret 541 9693 or Yvonne 542 2235.

## Waimea South Historical Society

### Visit to the Vintage Machinery Steam Museum/Higgins Heritage Park

by Margaret Clark

Last month the Waimea South Historical Society visited our own local historic Higgins Heritage Park at Pigeon Valley, Wakefield.

Several vintage cars picked up members at the Wakefield Village Green and then proceeded to the museum to take a leisurely look around the exhibits and hear the history from Alan Palmer, one of the dedicated custodians.

The truck museum was of particular interest as were the old farm tractors. Rodger Quinney, our President, was there to give us all the details of his family's first tractor which was over 100 years old. Margaret Clark also saw her dad's first tractor; a John Deere bought about 1950.

We also saw a replica of the Wakefield Johnson Saddler's shop which was sawed in half over a property dispute and featured in the Memories Magazine several months ago. Lots of exhibits were of interest to the group as they showed how our early settlers lived their lives and reminded us how easy we have it today.



All in all this was a very interesting morning which finished with lunch and a return to Wakefield in the vintage cars.

The Waimea South Historical Society meets monthly on the last Tuesday at either the Richmond Library or a local field trip is organised.

Anyone is welcome to join up especially if you have an interest in the local history. Contact the Secretary Arnold Clark, phone 5447834 to find out meeting details.

## WAKEFIELDQUARRY

Drainage metal : Hard fill : Basecourse 70mm : Topcourse 40mm & 20mm  
Landscape rock : Lime : Firewood

**Sorry no more trailers or utes may be loaded because of the safety risk.  
We do have a 2.5t tiptruck available.**



566 Church Valley Road, Wakefield

Ph: 5419093

Mon - Fri 7.30am - 5pm

WAKEFIELD SCHOOL PTA ANNUAL FUNDRAISER

WAKEFIELD SCHOOL

# Twilight Gala



Cakes  
Drinks  
ICES



Live  
MUSIC

BOUNCY CASTLE



Games

2ND  
HAND  
BOOKS

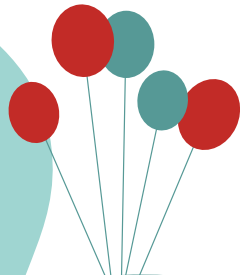


FOOD

Silent  
AUCTION

GIANT WATER SLIDE

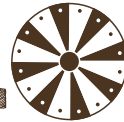
Good Family Fun



RIDES

Plants

CHOCOLATE  
WHEEL



Garage Sale

2ND  
HAND

Duck  
& DOG SHOW



CLOTHING



PETTING  
ZOO

FACE PAINTING

TOYS

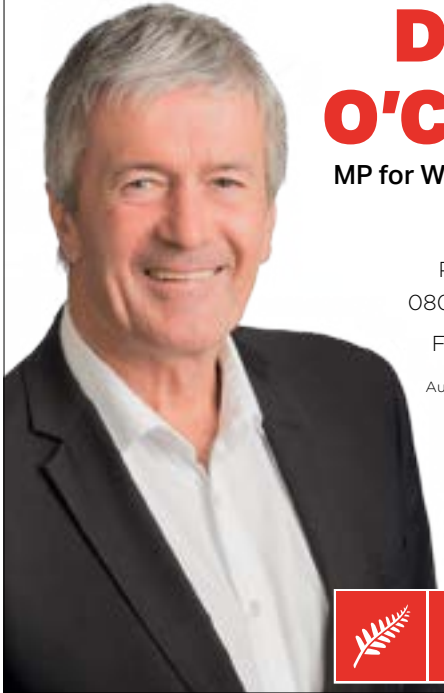


WAKEFIELD SCHOOL

Saturday 4th November 2017 4 - 7.30pm

GOLD COIN DONATION ENTRY • GATES OPEN AT 4PM

# Thanks for your support



## Damien O'Connor

MP for West Coast/Tasman

234 High St, Motueka

Phone: 03 528 8190 or  
0800 DAMIEN (326 436)

FB: damienoconnormp

Authorised by Damien O'Connor  
Parliament Buildings  
Wellington



FOR A PROFESSIONAL, DEDICATED BUILDING SERVICE  
"FROM BEGINNING TO END"

- All Building Projects Undertaken from Large to Small
- Licensed Building Practitioner and Trade Certificate Qualified
- Site/Project Management
- Over 35 Years Industry Experience



WE ARE A REPUTABLE AND PROUD FAMILY OWNED  
AND OPERATED BUILDING COMPANY

ROWAN READER

M: 021 154 6040

E: redwoodbuildingservicesltd@gmail.com



Dru Yoga is a graceful and potent form of yoga, based on soft flowing movements, directed breathing and visualisation. With its foundations set firmly in ancient yogic tradition, Dru works on body, mind and spirit to rejuvenate your whole being

Designed to be practised by people of all abilities, all fitness levels and all age groups

If you want to physically strengthen your body and emotionally enhance your mind, Dru Yoga will give you the tools to take into your daily life and help you cope with the stresses of modern living

**Mondays 9.30 - 11am Tuesdays 6.30 - 8pm**  
**Saturdays 10.30 - 12pm**  
**Starting Monday 25th September**

RSVP your interest

\$12 per class, 1st class **FREE!**  
Classes up to 9 students, RSVP to book a space  
Karen Petrie 027 917 3504  
Email: tandkpeters@xtra.co.nz  
47 Telenius Road, Springrove  
Find me on Facebook: The Yoga Room



## Wakefield ELECTRICAL LTD

We Do All Electrical Work (incl. Caravans WoEFs)  
Andrew Smith - Electrician/Inspector  
Est. 2013  
03 541 8797 - 027 441 8797  
"Your Local Electrician"

**Nelson Travel Broker**  
your journey starts here  
*locally Owned & Operated*

Phone: 03 541 8417 or 021 545 799  
Email: sue@nelsontravelbroker.co.nz

Check out what my clients have to say at  
**www.nelsontravelbroker.co.nz**  
An authorised member of Air New Zealand Holidays Travel Brokers

# Wakefield Bowling Club

by Tony Eames

The first interclub event of the summer was the Fives, teams of triples and pairs playing against the other clubs in the region. Teams were graded into sections and the overall winner was based on total points from all sections.

The Wakefield women's team won section one against the top teams from all the other clubs but was placed second overall. The men's section two team won its section and placed second overall. Please see photos.

The first tournament of the summer season was held on Wednesday, 18 October and was dominated by Wakefield teams: the winning team was Tony Eames, Kevin Galvin and Tom Closey, second place June Lines and Rona Vessey with Tony Fowler from Motueka and third place Chris Longman, Trevor Woodbury and Pam Bonis.

A Wakefield team of Barbara McGregor, Margaret Eames, Julie Hall and Linda Sisterson was runner up from 54 teams entered in the Women's South Island Chartered Clubs event held recently in Christchurch.

Great results to start the season.

## Have a Go Day

This was rained off in October and has been rescheduled for: Sunday, 12 November 2 – 4 pm.  
All welcome. Flat soled shoes please.

## League Bowls:

Starts Thursday 16 November 6 – 8 pm.

The Community Bowls format has been revamped for this year. Teams will play off and points scored by each individual player each evening will be accumulated over five weeks with prizes for the winners each day and the overall winners.

Club members will be available to play with and help non-bowlers.

All welcome. Cost \$5 per player, children free.  
Food and drinks available.

## Other Events:

Social roll ups take place on Monday and Friday afternoons with anyone welcome to come along and play. Be there 1 pm, \$5 green fees for non-members.

There will be club, interclub and centre events on midweek and most weekends from now on so please feel free to call in to see what is going on.

For more information:  
Please contact Tony on 5418316.  
Or check the website: <http://www.sporty.co.nz/wakefieldbowls>



The men's fives team from left: Les McJarrow, Allan Robertson, Harry Beckers (triples). Ron Charles and Don Sixtus (pairs).

The women's fives team from left: Margaret Eames, Linda Sisterson, Yvonne Robertson (triples). Julie Hall and Carolyn Mason (pairs).



## Delicious Honey straight from the valley

Mountain Valley Honey brings you award winning honeys, harvested from the beautiful Marlborough Sounds and stunning remote areas of the top of the South Island. Our bees forage to bring you Manuka, Native Bush, Autumn Gold, Honeydew and Kamahi honeys to enchant your tastebuds.

Find us at: [www.mountainvalleyhoney.co.nz](http://www.mountainvalleyhoney.co.nz)

Email: [info@mountainvalleyhoney.co.nz](mailto:info@mountainvalleyhoney.co.nz)

Visit us: Every Saturday at the Nelson Market



# Wakefield Playcentre

by Liz Ashburner

This month we had an impromptu adventure after Alex and Evie had been playing Forest Boy and Forest Girl on the fort at Playcentre. Since we are lucky enough to have Faulkner Bush right next door, this seemed like the perfect place to extend their play!

We set off on a forest walk and the tamariki had a wonderful time exploring the bush, discovering creeks, skeleton leaves and hidden painted rocks (if you haven't heard of the painted rock phenomenon, check out Nelson Rocks on Facebook). Playcentre parent Charlotte said "They really did roam and explore and it was lovely seeing new friendships developing and the older kids helping the younger ones".

Unstructured play outside provides so many benefits. Children are able to develop physical skills, problem-solving and risk-taking while cultivating an appreciation of the natural world. There is also a growing awareness of the importance of outdoor play in growing resilience in our children as they develop independence and confidence in their ability to overcome challenges.

*It is important to understand that many of the fundamental tasks that children must achieve, such as exploring, risk-taking, fine and gross motor development and the absorption of vast amounts of basic knowledge, can be most effectively learned through outdoor play.* UMKC School of Education



Welcome to Joel who has recently joined Playcentre – we look forward to having you as part of our whanau.

If you are interested in finding out more, call in to see us on Treeton Place, Monday to Friday between 9:30 and 12.

You are guaranteed a warm welcome and the first three visits are free.



## WAKEFIELD BOWLING CLUB



Have a Go Day  
Sunday 12 November  
2 - 4 pm

All welcome  
Flat soled shoes please

Contact: Tony on 541 8316  
Or website: <http://www.sporty.co.nz/wakefieldbowls>

# McGAZZALAN FUNDRAISER

## Saturday 2<sup>nd</sup> Dec

Wakefield Village Hall

Tickets \$40 per person, includes entry, nibbles, one entry into Mystery Raffle, tea/coffee.

Tickets available from Wakefield Four Square, Village Cycles, and Nelson Motorcycle Centre

Get In Early.....Tickets Will Sell out !!!

Doors open 6.30pm.  
Live music from 7.30pm showcasing local Blues legends 'Boogie Train' !!!

Strictly RIG event! Beer, wine and selected RTD's.  
Cash preferred. Limited Eftpos available.



Wendy Pearson



Admire Nails  
&  
Beauty

For all your beauty  
requirements in the heart  
of Wakefield Village

**Cheryl Roach**

Qualified Beauty Therapist  
109 Edward Street  
Wakefield  
Phone 03 541 8345



**Carter**  
& SONS CONCRETE

**SPECIALISING IN  
SOLUTIONS FOR ALL  
BUDGETS AND NEEDS**

Give Sam from Carter & Sons  
Concrete a call for a free Quote  
and Assessment  
on 0275-811-621.

**CALL TODAY!!**

Proud to Sponsor  
Wakefield Football Club



**FIX UP  
SET UP  
BACK UP  
CLEAN UP  
TABLETS &  
COMPUTERS**

**mObile  
cOmputing**

In Nelson  
since  
1997

**548 1787  
027 224 0955**

**Fran's the Man!**  
fran@mobilecomputing.co.nz  
Still no call-out fee &  
we still come to you.

**Craig Smart**

**CONTRACTING LTD**

**DIGGERS & TRUCK WORK**

- Landscaping - Topsoil Screening
- Root Raking - Site Clearing
- Driveways - Gravel Supplies
- Trenching - Posthole Boring

**541 9626 or 0274 440 441**

**craigandcath@xtra.co.nz**



- \*Arborist work
  - \*Tree felling
  - \*Hedge trimming
  - \*Landscaping projects
  - \*Shrub cutting and gorse control
  - \*Planting and re vegetation projects
  - \*And much more green care  
of your property
- This is done by a trained arborist  
and nurseryman with many years of  
experience in plant production and the  
landscape business

contact MORTEN for a free quote  
Ph: 021 206 9914 or 541 86 85  
email: mortenlausen@gmail.com  
www.nelsonlandscaping.co.nz

We have a Vermeer s800tx,  
a multi purpose landscaping and  
property maintenance machine.  
It's small, powerful and versatile.  
It can get into tighter areas and  
is property friendly leaving little  
impact on the ground

- Lawn preparation and laying
- Spreading of loose material (stones, bark, etc)
- Hole drilling/Auger work (planting, post holes etc)
- Stump removal
- Earthwork (small)
- Section clean up
- Landscape work
- Trenching
- Rock-work



Full insurance cover while all work is being done



**Gardiner  
Building**



**Contractors**

**NEW HOMES \* ALTERATIONS**

**gbc.ltd@xtra.co.nz**

**0274 840 719**

**After Hours 03 541 8482**

**www.gardinerbuildingcontractors.co.nz**

# On The Beat

Hi Everyone,

Well it looks like spring is well and truly here and hopefully we will start getting some better weather coming in to summer. I have a fair bit to cover this month so will get straight into it.

We have had an increase in stolen cars being dumped and burned in the Wakefield and Brightwater areas. These are generally dumped in out of the way areas up a valley or forestry roads. Often cars are stolen from other places and they use the rural areas to burn the vehicle. Generally by the time we get there it is often too late to catch the offenders but sometimes timely information can lead to us apprehending them.

I recently had a pursuit with a Toyota Hilux Ute that was stolen from Nelson. Due to quick information passed to Police Communications I was able to locate the ute driving through Wakefield. I pursued the vehicle all the way to the Kawatiri Junction where we ended up using road spikes to stop the vehicle. Despite the driver's best efforts to carry on driving with only rims as tyres we apprehended the offender a short time later. It was awesome to be able to get the vehicle back to the owner minus a couple of tyres, unfortunately. We obviously cannot be everywhere at once and your information, no matter how minor you think it is, can help us catch and prosecute the offenders.

There have also been several forestry burglaries from skid sites in the Golden Downs area where tools and large quantities of diesel have been taken. If you see suspicious vehicles in forestry areas please don't hesitate to call 111 or \*555 and let us know the registration plates. I imagine somebody locally may have an idea who has been involved in these thefts. If you have been offered cheap tools or fuel please let us know about it. It is pretty frustrating for the forestry crews to turn up on Monday to find their machines damaged and tools taken.

It is cannabis growing season again and this could affect you and your neighbours. Cannabis growers won't hesitate to use you or your property for their own means. Along with this, crimes such as theft and burglary are often committed by cannabis growers and users.

If you are a farmer, hunter, trumper or someone who visits rural areas we are keen to hear about anything suspicious you might see. If you see vehicles in rural areas, people entering the bush who do not look like hunters or vehicles loaded with potting mixture or irrigation hoses we want to know about it. If you come across a cannabis plot do not enter it to investigate further as they can often have things in place to prevent people from accessing the plot. If you have access to a GPS recording the co-ordinates can make locating the plots a lot easier for us.



Your information will be treated in complete confidence. You can come and see us at the Wakefield Station or email me at [jamie.white2@police.govt.nz](mailto:jamie.white2@police.govt.nz). You can also call us on (03) 541 8210. You will go through to an automated message but enter the extension 38340 when prompted and you will come straight through to the Wakefield station phone. If you don't get an answer you can leave a message. Alternatively information can be provided anonymously to Crimestoppers on 0800 555 111 or online at [www.crimestoppers-nz.org](http://www.crimestoppers-nz.org).

Well I think that is enough of a novel for this month. Take care of each other and hopefully it won't be too long before we can enjoy those long hot lazy days of summer.

Constable Jamie White, Wakefield Police



**Kate West** NZRP, BPhy

Accident & Sports Injuries  
Neck & Back Pain  
Vestibular Rehab

All Sprains & Strains  
Pre/ Post Surgical rehab

ACC & PRIVATE TREATMENTS

**03 541 8911**

At the **WAKEFIELD HEALTH CENTRE** 12 Edward Street, Wakefield  
[info@wakefieldphysiotherapy.co.nz](mailto:info@wakefieldphysiotherapy.co.nz)  
[www.wakefieldphysiotherapy.co.nz](http://www.wakefieldphysiotherapy.co.nz)

## Digger For Hire



**6 Tonne digger  
Dry hire or with  
Experienced Operator**

**Call:  
Richard Winn  
0274 362 897  
AH: 541 9567**



# Wakefield School

## Toroa Three - Year 3's

Last term after Matariki we were keen to learn more about Maori legends. While we drank our milk after lunch from the 'Milk in Schools' program, we watched Maori legends online.

In the school journals we are reading there are often very interesting articles on the Maori culture, past and present. We want to know more about the past. So we are going on a visit to the museum for a lesson on Maori legends and artifacts later in the term.

Finley, with the help of his mum, entered a project in to the Nelson Children's Science Fair. It was about how spiders are able to float on the water. It led to a discussion on what is lighter than air and how do objects move through air? We plan to investigate this further.

In writing we love to use personification. We wrote about the seasons giving them human qualities.

### Fading Winter

Winter wants me to sit by the fire. He wants me to forget Summer. He is almost invisible and very cold. Winter is fading. Soon he will leave.  
- Ben

### Beautiful Spring

I bike through valleys and fields full of her flower babies. It feels magical as she comes and banishes winter away. I see baby deer frolicking and butterflies fluttering. Flowers are blooming. Beautiful Spring is here and I love her. She is fabulous. Sun shines from her kind heart. Now let's appreciate who she is.  
- Lotte



## WAKEFIELD BOWLING CLUB

61 Whitby Road, Wakefield

### League Bowls 2017

Thursday evenings: 6pm – 8pm

16 November – 14 December

\$5 per player

Children no charge

New format for this year:

Points will be accumulated each week with prizes for the winner on the day and the overall winners over the five weeks

Open to all

Come alone or with a group and teams will be organised

Flat soled shoes please

Bowls and starter advice provided

Club members will play to assist non bowlers

Meet some new people and join in a fun evening

Sausages and drinks available

For more details phone Tony on 541 8316

Wakefield Country Players Presents

# Joyful & Triumphant

by Robert Lord

## WAKEFIELD VILLAGE HALL

Friday 17 | Saturday 18 November BYO Picnic  
Friday 24 | Saturday 25 November BYO Picnic  
Wednesday 22 November Show Only

Show starts 7:30pm  
Tickets only \$20 Adult \$10 Child (18 and Under)

To Book Ring 541 8869 or  
Email [bookings@countryplayers.org.nz](mailto:bookings@countryplayers.org.nz)

By Arrangement With

[www.countryplayers.wordpress.com](http://www.countryplayers.wordpress.com)



**SPRING IS HERE!**  
 Is your outdoor gear in need of some TLC?

**Make sure you're gear is ready for the upcoming mowing season!**

**We offer:**

- Servicing, repair and maintenance of push and ride-on mowers
- Blade sharpening
- Chainsaw servicing & sharpening
- Outdoor equipment & small engine servicing



**WAKEFIELD AUTO SERVICES LTD**

67 Whitby Road, Wakefield 7025  
 Phone 541 8121 www.wasl.co.nz



*"...for all creatures great & small..."*

**Open Monday - Thursday 8.30-5pm**

**Consulting Hours**

**Monday afternoon with Brenda**

**Tuesday morning with Brenda**

**Thursday morning with Paula**

**Ph 541 8974**

**info@tcvet.co.nz \* www.tcvet.co.nz**

**Edward Street, Wakefield**

**Head office 35 McGlashen Avenue, Richmond**



**544 1200 24 hours**

*all about you*  
**BEAUTY THERAPY**

*Christmas Party*

*Come and join me for Xmas drinks and nibbles and get your shopping done at the same time!!*

*Xmas Raffle drawn, great dermalogica gift packs available from \$30, refreshments provided.*

*First 10 people to rsvp get a goodie bag with dermalogica and doterra gifts.*

**Saturday 18th November, 2 - 4pm**

**at All About You, 1 Bird Lane**

phone 541 9510 to RSVP by Nov 11th



Phone: 541 9510

Mobile: 027 6143 298



1 Bird Lane, Wakefield

www.allaboutyoubeauty.co.nz

# Town and Country Talk

by Brenda Halliwell, Vet

Now that we're heading into the warmer months, here is some information about a couple of common poisonings we see in the clinic that not many clients seem to be aware of:

## Mycotoxicosis or Fungal Poisoning

This occurs when animals eat substances containing fungal toxins. Fungi present in food are not necessarily harmful but when fungi produce toxins in food, it can become poisonous to animals.

We see different forms of fungal poisoning in different species due to their different diets. For example, ryegrass staggers is a type of fungal poisoning in cattle, deer, horses and alpacas when they eat toxins produced by fungi in grass. Cats are usually quite particular about what they eat so we don't often see fungal poisoning in this species. However, dogs will eat anything and are very vulnerable.

The biggest risk for dogs is access to mouldy food, eg old bread, rubbish bins, unwashed food containers such as lunchboxes and yoghurt containers, old nuts and fruit, some mushrooms/toadstools. But anything mouldy that your dog has access to is a risk, eg compost heaps, mouldy horse and chicken poo, mould on dead animals... This type of poisoning can be seen any time of year but is more common when conditions are warm and wet, ie spring, autumn and sometimes summer!

Symptoms include staggering/wobbliness, weakness, restlessness, trembling, panting, vomiting, anorexia and seizures. Onset of symptoms is usually rapid. Dogs can be normal when they are let out and come back wobbly within minutes. We have seen dogs seizing after only 10 - 15 minutes. A mild case can last for 12-24 hours, a severe case can last for several days.

Diagnosis is usually made on the information you give us and clinical signs but it is wise to run blood tests to check internal organ function and rule out other possibilities. Treatment varies depending on severity of symptoms. In a very mild case where a dog is able to walk around, eat and drink, treatment may not be needed. However most dogs need supportive care in hospital until the toxin wears off. Obviously no one wants their dog to be poisoned by fungal toxins! It is usually an accidental event such as when a pet dog visits a farm or the lid of the compost bin comes off. As always it's best to know where your dog is or confine them in a safe area if they can't be supervised.



## Ant Bait Poisoning

There are a variety of ant baits available. Some are more toxic to cats and dogs than others. Symptoms are varied but include salivation, vomiting, wobbliness, restlessness, weakness, tremors and convulsions.

Treatment is supportive but can be tailored more specifically if we know which poison it is. If you suspect your pet has ingested ant bait, it is really helpful if you know the product's brand name or active ingredient and concentration.



*"...for all creatures great & small..."*

**Open Monday - Thursday 8.30-5pm**

**Consulting Hours**

**Monday afternoon with Brenda**

**Tuesday morning with Brenda**

**Thursday morning with Paula**

**Ph 541 8974**

**info@tcvet.co.nz \* www.tcvet.co.nz**

**Edward Street, Wakefield**

**Head office 35 McGlashen Avenue, Richmond**

**544 1200 24 hours**



# Wakefield Scout Group

Wakefield Scouts is up and running again for term four. This term we have a great programme planned with many fun and exciting activities.

Our focus for term four is outdoor adventure with several overnight tramps, swimming, kayaking, rock climbing and shooting all coming up before the Christmas holidays. As well as these activities we are still keeping with the fundamental parts of scouting with pioneering, bushcraft and camping this term.

Scouts run from ages 10-15 and at Wakefield we have heaps of room to grow.

We meet on Monday nights from 6.45pm until 9.00pm at the Wakefield Scout Den in Faulkner Bush (Treeton Place).

Through fundraising and community grants we have recently invested thousands in upgrading the scout den and purchasing equipment for the scouts to use including new tents and sports equipment. We are currently working on obtaining new kayaks for the scouts to use during the first term of 2018.

The adventure starts right here on your doorstep so if this sounds like you then don't hesitate to get involved. Contact Louis Hornell – [wakefieldgroupleader@gmail.com](mailto:wakefieldgroupleader@gmail.com).



# Wakefield Art Group

by Sonja Lamers

Here are two photos pertaining to the recently held art workshop with Rose Shepard.

Rose tutored a great workshop on Colour Theory and Colour Mixing at Wakefield Village Hall on 19 October.

We had 15 participants enjoying Rose's teaching. Rose kept participants busy all morning with information, exercises and suggestions.

Photos:

Below - participants at work

Right - Rose Shepard, tutor



## FREE INITIAL CONSULTATION



At All Accounts Matter, all accounts really do matter! Big or small, we are happy to help.

Call us today for a free, no obligation chat about your business!



**SONIA EMERSON**  
CHARTERED ACCOUNTANT  
03 541 9005  
021 221 1009  
[sonia@allaccounts.co.nz](mailto:sonia@allaccounts.co.nz)

## ALL ACCOUNTS MATTER LTD



GST  
Tax Returns  
Payroll  
Bookkeeping  
Cashflow forecasting  
Management reporting  
Rental statements  
Farm accounts

FOR ALL YOUR ACCOUNTING AND TAX NEEDS

## COMMUNITY ORCHARD

My name is Sarah and I am looking to form a group of people interested in starting a community orchard.

The plan is to plant a variety of fruit and nut trees in our community shared areas that are maintained and enjoyed by the community.

As sections get smaller and the next generation is less likely to see where their fruit comes from, a community orchard can be a great solution.

If you are interested in helping or learning more please contact me on 5418117 or email on [andrewbowron@yahoo.com](mailto:andrewbowron@yahoo.com).

## WAKEFIELD SCOUT GROUP AGM

Sunday 19 November

Bar 321  
Richmond

5.30pm

All Welcome

# The Wakefield Hotel

*Your local...Where good times begin...*



48 Edward Street, Wakefield. 03 5418006  
Info@thewakefield.co.nz

Happy Hour	Curry Night	Darts Night
Come wet your whistle and celebrate hump day! You're half way through your week the weekend is in sight	Every Thursday night is Curry night at the Wakefield \$18.50 Dine in or Take Away Bar Meals available Tuesday – Sunday from 5pm	1st Prize \$100.00 2nd Prize \$60.00 Best Woman \$50.00 Men Play 501/Women play 301 \$5.00 Entry Thursdays 7.30pm
<b>Wednesdays 4.30-6.30</b>		

The Wakefield Hotel is the place to be. Feeling like you need some help to get to the weekend? Pop on in to our Happy Hour every Wednesday we'll help make the weekend feel a little closer!!

Don't bother cooking Thursday Night, Let us do it for you. Every Thursday night our chef is making a mouth watering curry for you to dine in or take away, who can't resist a curry!!!

If you rate yourself as a bit of a Darts whizz then Thursdays are for you...come on down and win yourself some cold hard cash. Find us on Facebook to subscribe to our blog where you can keep in the know with your local

# Quiz

## NOVEMBER QUIZ

by Derek Evans

- How did Sir Walter Raleigh die?
- Who was Eric Weiss?
- In the UK during the Second World War, who were said to be "overpaid, oversexed and over here"?
- In which Olympic sport does the biggest jerk win?
- What is the national cheese of Greece?
- Which of Henry VIII's wives gave him the male heir he wanted?
- Which turbo-jet airliner is the most common worldwide?
- What is a young spider called?
- Which is America's oldest soft drink brand?
- Which town in Central Spain is famous for it's swords and knives?

# Quiz Answers

Here are the answers from last months quiz:

1. What material is the painting The Mona Lisa painted on? Wood
2. What colour is the flag flown on a ship where a disease has broken out? Yellow
3. What is the most common food allergy? Nuts
4. Which poem by Rudyard Kipling ends with the line 'And which is more, you'll be a man my son'? If
5. What is the full name of the first man to climb the Matterhorn? Edward Whymper
6. What is the well-known Arabic word for 'The Island' or 'The Peninsula'? Al-Jazeera
7. Dirk, Ka-bar, Sykes-Fairbairn, Kukri and Basilard are all examples of what? Knives
8. Duffel bags and duffel coats. In which EU country is the town Duffel located? Belgium
9. A bicycle manufacturer, a US state capital and a county in West Virginia are all named after which Englishman? Sir Walter Raleigh
10. Alec Guinness, Robert Carlyle, Anthony Hopkins and Ian McKellen have all played which 20th century historical figure? Adolph Hitler



## Practical legal advice in Richmond

Kaye Taylor & Jennifer Penny are available at 66 Oxford Street, Richmond, to assist new and existing clients with all aspects of property and business law and the many issues related to relationship property.



03 548 8349  
www.pittandmoore.co.nz

**PITT & MOORE**  
LAWYERS AND NOTARIES PUBLIC

**Check out our Focus Wakefield Facebook page**

**www.facebook.com/FocusWakefield**

**Share your stories, photos, events with the community.**

**Post items wanted, for sale, help needed etc...**

# The Wakefield Mural Group

## THE WAKEFIELD MURAL GROUP - Needs Community Support

by Evie-Joy South

"Back in the day"... or more precisely, December 3rd, 2000, the Wakefield community celebrated the completion of the historical mural on the chemist shop wall with a Mural Gala Day.

Now 17 years on it is a tad jaded and faded and needs restoration work. So a group of three, long-term Wakefield residents now wish to "save" and restore the existing historical mural, with as much community support as possible.

A little bit of history... In 2000, Stu Watts, Arnold Clark and Evie-Joy South were a subcommittee of the then Wakefield Residents and Ratepayers Association tasked with getting the historical mural completed. Also at that time, Heather Watts hung with us and made light of all the many little jobs that needed to be done. Now Stu, Heather and Evie-Joy have teamed up again to make this restoration work happen. As Stu says, "we are not affiliated to any other organisations or mural projects, this is just the three of us, doing what we do best. Thinking of our village and rolling up our sleeves to just get on and do it."

### NEWS FLASH

Mural and landscape artist Pete Madsen has been contracted to do this restoration work and was in days past a local lad to boot! Perhaps best known to some as one of the Madsen Brothers singing group.

We already have a very generous donation of \$6,000 to get us up and running and need another \$9,000 to complete this work. With these funds we will also be adding an historical description panel to make folks aware of the significance of the individual aspects of our mural.

Your support of our venture to keep our village history alive and well would be sincerely appreciated. A donation box is located at the local chemist shop or if you would prefer to make donations direct to our bank account just give Heather a telephone call for these details.

Stu and Heather Watts, phone 541 8151 or mobile 027 541 8151, email [stuartandheather@live.com](mailto:stuartandheather@live.com)  
Evie-Joy South, phone 541 8980 or mobile 027 907 2879, email [tuiville@xtra.co.nz](mailto:tuiville@xtra.co.nz)



## Mobile Feet Podiatry



**Carole Horrell B H Sc (Podiatry)**

Now available at Wakefield Health Centre  
Phone Carole to book

**Mobile: 021 0247 4037 | A/H 03 9275120**

**Email: [carole@mobilefeet.co.nz](mailto:carole@mobilefeet.co.nz)**

**[www.mobilefeet.co.nz](http://www.mobilefeet.co.nz)**

**Kernow CONSTRUCTION**  
BUILDING & LANDSCAPING  
DESIGN • CONSULTATION • CONSTRUCTION

Jason Preller A.N.C.H  
Tel: 03 526 6095 Mob: 021 167 3803  
Email: [kernow4construction@gmail.com](mailto:kernow4construction@gmail.com)



FRIDGES • FREEZERS  
WASHERS • DRYERS  
DISHWASHERS • OVENS  
RANGEHOODS

## WHITEWARE SOLUTIONS LTD

For all your whiteware repairs in  
Wakefield, Richmond and the  
surrounding areas.

**TIM LLOYD**  
79 Treeton Place,  
Wakefield.

For service call: **027 685 5777** or **541 8877**

## Painter



**Interior, Exterior  
& Wallpapering**

**For a Free Quote  
Phone Peter Thompson  
027 444 93 64  
A/H 03 541 9678**

**62 Whitby Rd Wakefield**

# Live Local Shop Local

by Ciaran Thompson

## UNDERDOG

Canine Retreat is a hotel specifically for small dogs located on Kohatu Highway SH 6 Wakefield. It was recently bought by Terry and Sarah Wilkin who are originally from the UK but have lived in Wakefield for many years. They cater to dogs of all ages and will happily involve dogs with medical problems or physical difficulties.

Terry and Sarah said deciding to buy the Canine Retreat was a spur of the moment thing because Sarah says "We wanted a new adventure". Also, they love dogs, so it worked well.

They can hold up to 20 dogs at a time depending if some want to sleep together or not. They have owned the Canine Retreat since mid-September. The dogs can stay on their own but the retreat can also cater for families of dogs.

The dogs are very well cared for here and have lots of play time; eight hours to be exact, from as soon as they wake up in the day to when they go for a nap. They are exercised by running around a lot, as Sarah and Terry have a very large property for this. The dogs have dog toys to play with and they are constantly among each other so they can make friends as well as have time to snuggle up with loving humans! One dog they look after, Dottie, loves water so they have a small paddling pool for her to use!

One of the things that Sarah thinks is special about their kennels is that the boarding kennels are exclusively for small dogs. Each dog has their own space to sleep and eat in with their name on it. The dogs are all around the same size so they can't be bowled over by larger dogs. Sarah says that they are very proud of the food they have to offer for the dogs. She also says that the Wakefield Vet has given them helpful advice on vaccinations so that the dogs can all stay healthy.

Terry sums up the best thing about looking after the dogs by saying "You've seen the dogs. What's not to love?" Sarah shares this view by saying that they themselves own four English Springer Spaniels (which are too large to stay in the kennels) and that she's always loved dogs. The hardest thing about their new venture, Terry says, is probably the amount of cleaning and sterilising that goes on, as they have to clean floors, windows and doors.

In terms of the future, Sarah says that they probably won't change too much as they are happy with how it is already.

The one thing they have changed was making the car park wider than it had been originally.

So if you want your dog to enjoy all the comfort and care they have at home with plenty of room to exercise, contact Terry or Sarah at their small dog paradise at 027 541 8009.

Your dog definitely won't be the underdog here!



## Collection of Vintage 'Spring Bride' jewelry Colourful Summer just around the corner



we have original, interesting, fun and practical gifts for Dad's of all ages  
Specialising in revived furniture, vintage furniture and furnishing.  
A unique range of vintage and new gifts.  
10 Clifford Rd, Wakefield Ph 541 9559 Open Wed-Sunday check out  for our hours

## Wakefield Toy Library

EDWARD ST, WAKEFIELD



\* Thank you to the Lotteries Community Fund for our wonderful new toys.

\* Our opening hours are:  
Thursday 2.30-3.30pm Saturday 9.30-11.30am  
\* We will be closing for the holiday break this summer on 16 December, 2017. Reopening 1 February, 2018.

\* Contact us on our Facebook page or email [wakefieldtoylibrary@gmail.com](mailto:wakefieldtoylibrary@gmail.com)

Play the sustainable way.  
Join a Toy Library



CHECK OUT YOUR LOCAL TOY LIBRARY

# Community Notices



## WAIMEA AREA QUILTERS

Our next meeting will be  
**Saturday 11<sup>th</sup> November 2107**  
at  
St. John's Auditorium, Edward St, Wakefield  
**9.15am – 3.30pm**

Shared pot luck lunch

Members will be making either a  
or

Candle Mat



Christmas Wreath



If you are interested in taking part in creating either of these items  
Please contact  
Marilyn 03 541 8435 email: [gjbbs@ts.co.nz](mailto:gjbbs@ts.co.nz)  
or Leah 027 685 3237

New members are always welcome

## Wakefield Craft Group

Come and join the ladies Craft Group  
held on Wednesday mornings  
in the Fire Brigade Supper Room  
Pigeon Valley Road  
**9.00am - 12pm**

Bring any project - sewing, knitting, crochet.  
Learn to knit or crochet or just come for a look  
and join us for tea, coffee and company.  
**Small donation**

For more information phone Judy on 5418342

## WAKEFIELD BOWLING CLUB

Wanted scrap metal, appliances,  
old wiring, old car batteries, etc

Wakefield Bowling Club is willing  
to collect any items.

Please phone Trevor on 5418855

## TE REO MAORI

Learn Te Reo Maori with Âni Davey.  
Âni is a Tutor of Te Reo Mâori,  
with over 22 years experience  
in tutoring groups from beginner to advanced level.

Would you like to learn Te Reo in a fun,  
non threatening environment?

Classes are for two hours, during day time  
in Brightwater in school term,  
small group (4 to 6 people).

For more information contact Sonja Lamers:  
[sonjal@ts.co.nz](mailto:sonjal@ts.co.nz) or txt 027 374 0500.

## Lutheran Church Ranzau Road Cemetery

Wanted, any information, maps,  
register names,  
since first burial for perusal.

Webby family burials in particular.

Phone MaryAnn Mann,  
granddaughter of Stanley Webby,  
03 544 4556 or  
027 548 9948

## Country Players Present 'JOYFUL AND TRIUMPHANT' By Robert Lord

**Friday 17 and Saturday 18 November: BYO PICNIC THEATRE**  
Bring your own cutlery, crockery, wine glasses and food. We provide coffee and tea.  
**Show starts at: 7.30pm.** Doors open at 6.30

**Wednesday 22 November – SHOW ONLY**  
We provide coffee, tea and cake.  
**Show starts at: 7.30pm.** Doors open at 7.00pm

**Friday 24 and Saturday 25 November: BYO PICNIC THEATRE**  
Bring your own cutlery, crockery, wine glasses and food. We provide coffee and tea.  
**Show starts at: 7.30pm.** Doors open at 6.30

Adults \$20 per ticket/Child (18 years & under) \$10 per ticket.

Looking to get into the Christmas spirit? Come join Country Players in  
a celebration of kiwi Christmas in the award winning and much loved  
play 'Joyful and Triumphant'.

### HOW TO BOOK

Phone 541 8869 or Email [bookings@countryplayers.org.nz](mailto:bookings@countryplayers.org.nz)  
Please note: We do not issue tickets. Your name will be on a seating plan revealed at  
the door.

### HOW TO PAY:

Post a cheque made out to: Country Players Inc  
PO Box 13  
Wakefield

Or our internet banking number is: 03-0751-0274256-00. Please put your first initial and  
surname as reference.



# Community Notices



## Wakefield Art Group

*Everyone welcome. All levels of interest.  
Our group has been meeting weekly since July 2012 during school term.*

Every THURSDAY of the School Term  
9.30 am – noon  
Wakefield Village Hall – Supper Room  
\$4 per session - cup of tea/coffee included

For more information contact:  
Fiona Ph: 027 767 7909  
E: [kahurangicottage@gmail.com](mailto:kahurangicottage@gmail.com)  
or Sonja Ph: 541 8176  
E: [sonjal@ts.co.nz](mailto:sonjal@ts.co.nz)

## WAKEFIELD MARKET DAY

Saturday 11th November

9am to 12pm

Come down for pre Xmas bargains.  
Stock up on all those garden plants and shrubs  
before summer really arrives. Large variety of stalls.  
For sites ring Jean 541 8154

## MAINLY MUSIC

### Wakefield St Johns Anglican Worship Centre

Monday's 10.00am. Cost \$3.00 per family.

This is a time for parents and children to enjoy music, song, dance and lots of laughs.

Any queries please phone Wendy Milson 544-5494.

## WAIMEA PLUNKET PLAYGROUP

The Brightwater Community  
Anglican Church, Waimea West Road, Brightwater  
Time: 9.00 – 12.00 noon Day: Wednesday morning Cost: FREE

## PERMACULTURE GROUP

Our group meets informally on the 4th Saturday of the month.  
If you are interested in joining us to share knowledge  
or learn to start growing food organically,  
then ring Diana and Iain on 5418950 for the venue.

## FOXHILL TENNIS COURTS

658 Wakefield-Kohatu Highway  
(at rear of Rutherford Memorial Hall)  
**FREE PUBLIC USE**

Re-painted lines, nets up ready to go, for twilight practices and fitness.

Managed by Rutherford Memorial Hall (Foxhill) Assn Inc. for TDC  
Erica Short Secretary/Treasurer 541 8882

## WAKEFIELD ANGLICAN COMMUNITY LUNCHESES

The monthly community lunches recommenced for the  
year on Thursday February 16th at 12 noon  
in the lounge at the Worship Centre.

All welcome third Thursday each month.  
If you wish to attend we prefer that you  
let us know by phoning Caroline 5418491  
by the previous Monday if possible.

Come and enjoy a social hour and chat over a meal.  
A small donation is appreciated to cover expenses.

## NELSON / WAIMEA ANGLICAN SENIOR SEMINARS TICKING THE BOXES

This is the last in the Ticking the Boxes Seminars for 2017, information for seniors and it is on  
Getting a Promotion - Death from a Christian Perspective, presented by Rev Martin Harrison.

Death is not an easy subject for anyone but eventually it happens to us all. If you would  
like to ask questions, hear some near death experiences, find out why the Christian  
faith has a hope in death, or you are going through an experience at this very moment  
and need support / some understanding, then please come to St Paul's Community  
Church, Brightwater on Wednesday the 15th of November, at 12pm starting with lunch.

Free of charge.

## RURAL POST

Contact Nick & Jackie Costley

For all your RD2 Wakefield postal  
needs, including

• Prepaid Bags • Stamps • Local  
freight from

Wakefield, Dovedale and Tapawera.

Prescriptions from Wakefield.

Nick - 027 541 8581  
Phone 541 8581

## RAW FOODS

Meet up for a potluck lunch with  
people interested in raw foods.

Sunday 29th October 12.30 - 2.30 pm

Meet like minded people and  
learn more about this lifestyle.

We meet at people's homes so ring Sally  
for details: 021 170 9443 or 548 8403

**Can we celebrate your  
special event or  
help remember  
someone dear to you?**

**Please send your obituaries, birth  
announcements, wedding stories,  
other celebration notices to us at  
[windowonwakefield@gmail.com](mailto>windowonwakefield@gmail.com)  
or ring 541 9005**

# Community Classifieds

## FOR SALE

July

Hi-line brown pullets, excellent layers, vaccinated and guaranteed.  
Ph Alison White 021 168 0324

## FOR SALE

July

This years hay, small size bales, \$8 a bale  
Phone Rosalee 541 8270 or 021 176 1357

## WANTED

August

Old computer discs, cds, dvds for craft project. If you have a stash you need to clear out I would love to have them. Will collect. Please email ylash@xtra.co.nz or call 541 9757. Thanks.

## LAND WANTED

October

2-4 acres of flat land in Brightwater, Wakefield, Eighty Eight Valley, Pigeon Valley areas wanted. Services not required as we have a newly built full solar powered two bed home to relocate.

Private block only, not in a subdivision.

Cash buyers.

Do you have a small parcel or lot you want to sell?

Please contact Rachel 021 227 7950.

## FOR SALE

October

Children's sunhats. Various sizes and colours. \$12.50 each. Phone Deborah on 541 9045.

## FOR SALE

October

Babies booties/slippers, woollen.

\$3.00/pair.

Phone Deborah on 541 9045.

## FOR SALE

November

Ford Ka 1300cc hatchback car.

Known as Blues Clues - this car has been owned by my wife since new. Unfortunately it is now time to sell it as my wife is unwell.

Year 2000, NZ new, 109,000k's on clock.

WOF July 2018, Registration Feb 2018

Price \$3,200, also listed on Trade Me

Ph 541 8146 or 027 283 3842, ask for

Derek

## SEEKING

October

Seeking 5 to 10 hectares grazing land to lease. Contact Callie via text at 022 645 3971.

## FOR SALE

October

12 angora goats, mostly females of various ages. All males are neutered. \$25 each.

Contact Callie via text at 022 645 3971.

## WORK WANTED

October

Child care/school holiday care available. 50 year old woman with care tickets. Private home, huge section, close to school and parks. Please phone Carleen on 541 8567.

## FOR SALE

November

Camp bed single with mattress, three fold type for easy storage. As new \$50, phone 541 8363.

## MONTHLY COMMUNITY CALENDAR

### NOVEMBER 2017

Thur 2	9.30 am	Wakefield Art Group, Wakefield Village Hall
	2.30 pm	Wakefield Toy Library open, Edward St
	6.00 pm	Tai Chi, Wakefield Village Hall
Fri 3	2.30 pm	Wakefield Community Library open
Sat 4	9.30 am	Wakefield Toy Library open, Edward St
	4.00 pm	Wakefield School Twilight Gala
Mon 6	10.00 am	Mainly Music, St Johns Worship Centre
Tues 7	10.00 am	Tai Chi, Wakefield Village Hall
	10.30 am	Wakefield Community Library open
Wed 8	9.00 am	Waimea Plunket Playgroup, B/water Anglican Church
	10.00 am	Wakefield Quilters, Wakefield Village Hall
Thur 9	9.30 am	Wakefield Art Group, Wakefield Village Hall
	2.30 pm	Wakefield Toy Library open, Edward St
	6.00 pm	Tai Chi, Wakefield Village Hall
Fri 10	2.30 pm	Wakefield Community Library open
Sat 11	9.00 am	Wakefield Market Day, Village Green
	9.15 am	Waimea Area Quilters, St Johns Worship Centre
	9.30 am	Wakefield Toy Library open, Edward St
Sun 12	2.00 pm	Wakefield Bowling Club Have a Go Day
Mon 13	10.00 am	Mainly Music, St Johns Worship Centre
Tues 14	9.45 am	Live Well Stay Well, Pic's Peanut Butter Stoke
	10.00 am	Tai Chi, Wakefield Village Hall
	10.30 am	Wakefield Community Library open
Wed 15	9.00 am	Waimea Plunket Playgroup, B/water Anglican Church
Thur 16	9.30 am	Wakefield Art Group, Wakefield Village Hall
	2.30 pm	Wakefield Toy Library open, Edward St
	6.00 pm	Tai Chi, Wakefield Village Hall
Fri 17	2.30 pm	Wakefield Community Library open
	6.30 pm	Joyful & Triumphant, Country Players production opens
Sat 18	9.30 am	Wakefield Toy Library open, Edward St
Mon 20	10.00 am	Mainly Music, St Johns Worship Centre
	7.30 pm	Wakefield Community Council, St Johns Worship Centre
Tues 21	10.00 am	Tai Chi, Wakefield Village Hall
	10.30 am	Wakefield Community Library open
Wed 22	9.00 am	Waimea Plunket Playgroup, B/water Anglican Church
	10.00 am	Wakefield Quilters, Wakefield Village Hall
Thur 23	9.30 am	Wakefield Art Group, Wakefield Village Hall
	2.30 pm	Wakefield Toy Library open, Edward St
	6.00 pm	Tai Chi, Wakefield Village Hall
Fri 24	2.30 pm	Wakefield Community Library open
Sat 25	9.30 am	Wakefield Toy Library open, Edward St
Mon 27	10.00 am	Mainly Music, St Johns Worship Centre
Tues 28	9.45 am	Live Well Stay Well, Wakefield Villa
	10.00 am	Tai Chi, Wakefield Village Hall
	10.30 am	Wakefield Community Library open
Wed 29	9.00 am	Waimea Plunket Playgroup, B/water Anglican Church
Thur 30	9.30 am	Wakefield Art Group, Wakefield Village Hall
	2.30 pm	Wakefield Toy Library open, Edward St
	6.00 pm	Tai Chi, Wakefield Village Hall

### DECEMBER 2017

Fri 1	2.30 pm	Wakefield Community Library open
Sat 2	9.30 am	Wakefield Toy Library open, Edward St
	6.30 pm	McGazzaland Fundraiser, Wakefield Village Hall
Mon 4	10.00 am	Mainly Music, St Johns Worship Centre
Tues 5	10.00 am	Tai Chi, Wakefield Village Hall
	10.30 am	Wakefield Community Library open
Wed 6	9.00 am	Waimea Plunket Playgroup, B/water Anglican Church
	10.00 am	Wakefield Quilters, Wakefield Village Hall
Thur 7	9.30 am	Wakefield Art Group, Wakefield Village Hall
	2.30 pm	Wakefield Toy Library open, Edward St
	6.00 pm	Tai Chi, Wakefield Village Hall

## FOR SALE

November

Chicken eggs \$5.00 per dozen

Pekin duck eggs \$4.00 1/2 dozen or \$8.00 dozen

Great for baking, can deliver Wakefield area, phone Teresa 541 8668

## WORK WANTED

November

Do you need your lawns mowed, firewood cut, or any other jobs that you don't have time to do. Phone John 541 9233 or 027 469 0964.

# Community Directory

**Citizens Advice Bureau**  
548 2117 - 0800 367 222

**Rutherford Memorial Hall**  
658 Wakefield-Kohatu Highway, Foxhill  
Bookings and enquiries:  
Sue White 027 474 6324  
Hire Rates & Conditions:  
www.lordrutherfordhall.org.nz

**Pigeon Valley Steam Museum**  
Alan Palmer 027 319 7427

**Rural Ramblers**  
Carolyn Mason 541 9200

**Spring Grove Drill Hall**  
C Pike 542 3904

**Totaradale Golf Club**  
Jacquie 541 8030

**Wakefield Anglican Church – St Johns**  
Meet Sun 9.00am; 10.30am  
Rev. Allan Wasley 541 8883

**Wakefield Community Library**  
Wendy Gibbs 541 8490  
Pam Dick 541 8392  
Hours - Tues 10.30 -11.30am  
Friday - 2.30 - 4pm  
Excluding Public Holidays

**Wakefield Football Club**  
Chris Olaman 027 541 9029  
Ian Radcliffe 021 0244 6459

**Wakefield Medical Centre**  
541 8911

**Wakefield Pharmacy**  
5418418  
doug@wakefieldpharmacy.co.nz

**Wakefield Playcentre**  
Contact: 541 8866

**Wakefield School**  
Edward Street 541 8332

**Wakefield Scout Group**  
wakefieldgroupleader@gmail.com  
Louis Hornell 027 759 3006

**Wakefield Toy Library**  
Saturday 9.30-11.30am  
Liz Ashburner 541 9453

**Wakefield Volunteer Fire Brigade**  
DCFO Fritz Buckendahl 027 224 4162

**Justice of the Peace**  
Katie Greer  
896 Wakefield/Kohatu Highway  
Ph 021 547 756

**Country Players (Drama)**  
Jen Amosa 541 8139  
enquiries@countryplayers.org.nz  
www.countryplayers.wordpress.com

**Nelson Vintage Engine & Machinery Club**  
Allan 027 319 7427

**Pinegrove Kindergarten**  
03 542 3447

**Rural Women**  
Dawn Batchelor 542 3628

**St Joseph's Catholic Church**  
Sun 8am, Thurs 9.30am  
Parish Priest Seth Pijfers 544 8987

**Taoist Tai Chi**  
Deb Knapp 022 083 9332

**Waimea Sheepdog Trial Club**  
Colin Gibbs 541 8435  
gibbs@ts.co.nz

**Wakefield Book Group**  
Mahala White - 541 8933 or  
Chrissy Harris - 541 9596

**Wakefield Bush Restoration Society**  
Doug South 541 8980

**Wakefield Plunket Volunteers Group**  
Wendy Wadsworth 541 9272

**Plunket Nelson Area Office**  
For appointments etc 539 5200

**Wakefield School/ Community Swimming Pool**  
Phill Platt 027 231 7610

**Target Shooting Wakefield**  
targetshootingwakefield@gmail.com  
Contact: Dot Ashton  
541 8989 or 027 543 0529

**Wakefield Rest Home Ltd**  
Lowreen Mani - Facility Manager  
Navya Solomon - Clinical Manager/RN  
541 8995

**Wanderers Sports Club**  
542 3344

**Wakefield Physiotherapy**  
Kate West 03 541 8911

**Focus Wakefield**  
focuswakefield@gmail.com

**NZ Postcard Society Inc.**  
Doug South 541 8980

**Richmond Lions - Wakefield Rep**  
Ivan Burrowes 541 9689

**Spring Grove Church of Christ**  
Meet Sundays 10am  
541 8011

**Top of the South Rural Support Trust**  
gibbs@ts.co.nz  
Colin Gibbs 541 8435

**Waimea South Historical Society**  
Arnold Clark 544 7834

**Wakefield Bowling Club**  
Margaret Eames 541 8316

**Wakefield/Brightwater Book Club**  
Pauline Coy 542 3994  
paulinebc@gmail.com

**Wakefield Community Council**  
Sonia Emerson 541 9005

**Wakefield Indoor Bowls Club**  
Ren Olykan 541 8275

**Wakefield Preschool**  
Contact: 541 8086

**Wakefield School PTA**  
ptawakefield@gmail.com

**Wakefield Tennis Club**  
Ngaire Calder 541 9419

**Wakefield Village Hall**  
Rob Merilees 541 8598

**St. John's Worship Centre**  
Nigel Massey 541 8857

**Waimea Plains Junior Football Club**  
Debbie and Grant de Joux  
541 8307

**Window on Wakefield**  
Articles & Content - 541 9005  
Sonia Emerson

**Window on Wakefield**  
Advertising - 541 9641  
Genie & Lindsay Bradley

## AED DEFIBRILLATOR LOCATIONS - AVAILABLE 24/7

Wakefield Four Square, Highfield Farm, Kohatu Flat Rock Cafe, Old Tadmor Store, Dove Nursery, Corner of Thornee Road & Wins Valley Road, 29 Moonlight Road Glenhope, Corner of Totara View Road and Kilkenny Place, Southfuels Spring Grove, Belgrove Cafe and Bar, Lake Rotoiti Fire Station

## CIVIL DEFENCE - WAKEFIELD AREA COMMUNITY RESPONSE

In the event of an emergency, your first task is to ensure the safety of your own home, family and neighbours. Once you have attended to this, if you have **specialised skills/ equipment**, and/or feel you can assist others; or require assistance yourself, please make your way to the Welfare Centre which will be at the St Johns Worship Centre in Edward Street [unless notified otherwise].

Please note that the existence of a Welfare Centre does not absolve each individual from their **responsibility to be personally prepared**. You should ensure that you have your own **survival kit** in place, and that you are able to be **fully self sufficient for at least three days**.

In the event of an emergency, for urgent public messages, tune in to:  
More FM 94.1, Classic Hits 89.8, Fresh FM 95.4



I've sent high commissions **PACKING**  
with our **UNBEATABLE FLAT FEE**



## WAKEFIELD

11 Mayer Crescent

\$479,000+



Open plan living with a large deck and a park next door.

## RICHMOND

21 Aston Place

\$549,000+



3 bedrooms, 2 bathrooms, close to central Richmond.

## STOKE

68 Kingsford Drive

\$549,000+



Enjoy all day sun, covered patios and a glorious garden.

## THE WOOD

24 Atawhai Drive

\$669,000+



5 bedrooms, 2 bathrooms, 2 living spaces, views of the Bay.

## WAKEFIELD

15 Bastin Terrace

\$469,000+



4 bedrooms, lounge with logburner, chippee on wetback

## WAKEFIELD

10 A Windlesham Place

\$335,000+



2 double bedrooms, internal access garage & heatpump

Thank you for your business, when you support me you are supporting  
the following local organisations I sponsor:



Wendy Pearson

M 021 567 722

P 541 9667

E [wendy.pearson@tallpoppy.co.nz](mailto:wendy.pearson@tallpoppy.co.nz)

Bulsara Ltd REAA Licensed MREINZ

Licensed Real Estate Salesperson (REAA 2008)