



window on **wakefield**

Your Local News

Community News for the Wakefield Area

Disneyland and Princesses

by Annabelle McMiken

Hi my name is Annie. Some of you may remember me from an article in Window on Wakefield two years ago when I received a \$200 Focus Wakefield Youth Grant to help with a dance scholarship nomination to Auckland.

Since then I have continued to have a great time dancing. My most exciting trip was this July, when I went to America. After 18 long months of fundraising - sausage sizzles, selling clothes pegs, cups, pinecones, raffles, extra shows and anything else we could think of - eighteen of us flew to LAX.

Our first stop was Disneyland, where we danced in the Disneyland and California Land parades. It was 30 minutes of nonstop dance routine around the streets; we had to maintain a full stage face, full energy the whole time in the really hot afternoon sun. After the final parade they threw us a Disney Princess party with the Disney princesses, ice-cream and snow (you are never too old for Disney princesses). We did a small dance competition on one of the Disneyland stages before heading to Las Vegas.

We had a great time in Las Vegas; we stayed at Bally's on the Strip, which was great as the competition was in one of the famous ballrooms. We all danced well and came away with lots of badges and trophies. A highlight from Las Vegas was being selected to do daily workshops with a choreographer from New York.

Next we headed back to Los Angeles to do two more competitions; one at the Disneyland resort and one at the Hilton in Anaheim. We won some more trophies, and US trophies are huge compared to the ones we win in NZ so we were starting to wonder which ones we would have to leave behind as our bags were getting full!

We did lots of other great things; we were part of a studio audience in So You Think You Can Dance in Hollywood. We did a workshop at Abby Lee Dance Company, the home of Dance Moms. We went to Santa Monica pier and yes, did lots of shopping. I tried as many American lollies as I could, and decided my favourite restaurant was the Cheese Cake Factory. Many thanks to my dance teacher Trudy Fargher for organising the trip.

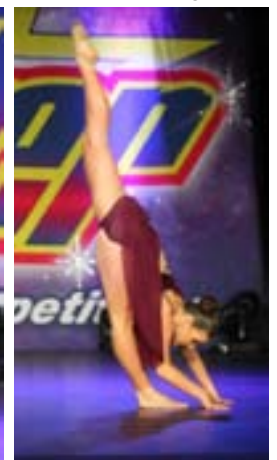
This month I am away again, to scholarship nominations in Lower Hutt, and this time I have five nominations; Tap, Ballet, Jazz, Contemporary and Hip Hop.

I would encourage anyone to apply for a Focus Wakefield Youth Scholarship; you can download the form from the Facebook page.

Lastly - if anyone would like to buy some more fundraising clothes pegs from me, text me on 0273608097.

It is only \$10 for 50 Yellow Sunshine pegs; and I can deliver.

Thank you.



HEDGES NEED TRIMMING? CALL ME!

malcolm property maintenance

Richard Malcolm
cell 021 02 545 565
a/h 03 541 9429
email malcolmpropertymaintenance@gmail.com
395 eighty eight valley road
WAKEFIELD



- ⇒ LAWN MOWING
- ⇒ GARDENING SERVICES
- ⇒ HEDGE TRIMMING
- ⇒ WINDOW CLEANING
- ⇒ KITCHEN JOINER
- ⇒ PAINTING - INT + EXT + GIB STOPPING
- ⇒ PRE SALE HOUSE CLEAN
- ⇒ RENTAL PROPERTY CLEANING
- ⇒ NEW FENCE & HOUSE REPAIRS
- ⇒ FURNITURE REPAIRS

WINDOW ON WAKEFIELD

How it works...

Window on Wakefield is produced and published by Focus Wakefield, a subcommittee of the Wakefield Community Council. All businesses advertising in this publication incur a cost for the advertising space allocated, depending on the size and location of the advertisement. The funds raised from this advertising are used to cover the costs of printing Window on Wakefield. No parties are paid for the time involved with editing, coordinating and publishing this paper. It is the intention that if surplus funds are raised from advertising, that these will be held in a separate bank account to be used for other community projects. The bank reconciliations and financial reports related to this account will be made available to any person who wishes to view them.

Content...

Window on Wakefield is a community newspaper, and as such, we look forward to having articles and content contributed by our community. If you wish to submit a one off article, or suggest some regular content, please make contact with Sonia on 541 9005 or email windowonwakefield@gmail.com and read the Terms and Conditions below.

We try to ensure information published is truthful and accurate, but do not check the facts of the articles and therefore cannot attest to their validity. While all reasonable care is exercised, we do not accept liability for any loss whatsoever incurred through our errors, acts or omissions in relation to the content of an article, or for any consequences of readers' relying on the information published. Opinions expressed by contributors do not necessarily represent the views of the Focus Wakefield group, nor are they necessarily endorsed by the Editor or Publisher.

Advertising...

If you wish to advertise in Window on Wakefield, please make contact with Genie or Lindsay on 541 9641 or email enquiries@wakefieldprint.co.nz and read the Terms and Conditions that will be provided on the rate card.

TERMS AND CONDITIONS REGARDING PUBLISHING OF CONTENT

- a. All articles and other content submitted for publishing must disclose the author's name or where the article/content is contributed by a community group, then that community group's name.
- b. All images should be provided to us in a high quality PDF format. We take no responsibility for the quality of reproduction for images that are not supplied to us in this format.
- c. If you wish to make changes to an article or content already submitted, please ensure these are communicated to us before the relevant deadline date.
- d. When you submit an article or other content for publishing you:
 - agree that the submitted material and/or images can be reproduced by the Editor or Publisher at any time without your prior approval
 - agree that all photographs submitted for publishing are provided free of charge, and the approval to print has been obtained from any persons shown in the photo - this is the responsibility of the person submitting the photo
 - acknowledge that all material is held by us at your risk and is not insured by us. Material will only be returned on request and may otherwise be destroyed by us
 - warrant and undertake that no statement, image, representation or information contained in your supplied article or content:
 - * is or is likely to be misleading or deceptive;
 - * is at all defamatory, in breach of copyright, trademark or other intellectual or industrial property right;
 - * is otherwise in breach of the Copyright Act 1994, Defamation Act 1992, or any provision of any Statute, Regulation or rule of law.
- e. We reserve the right to decline the publication of any article or any content whatsoever on any grounds that we in our absolute discretion see fit.



Jill O'Brien

R D 1 Wakefield
Rural Mail Contractor
**FOR ALL YOUR
MAIL NEEDS**

Stamps, Parcels, Freight
Phone 541 8963
Mobile 027 324 2126

**DID YOUR BUSINESS
MISS OUT THIS TIME**



**DON'T DESPAIR
WE HAVE SAVED
A SPOT FOR THE NEXT
PUBLICATION
JUST FOR YOUR BUSINESS**

**Give us a call
541 9641
or
Email
info@wakefieldprint.co.nz**

NEXT EDITION

Due out the first full week of each month

All Advertising to be submitted by the 20th of the Month prior

All Content to be submitted by the 23rd of the Month prior

For Advertising please contact Wakefield Print Ltd 541 9641

For Content please contact All Accounts Matter Ltd 541 9005



In the Bush

VANDALS COME FACE TO FACE WITH THE LONG ARM OF THE LAW AT WAKEFIELD

...Namely Police Constable Jamie White

We have had a fantastic result in locating the offenders who vandalised around 24 trees of various sizes at Faulkner Bush as reported in Issue 48 (October 2016) of Window on Wakefield.

Both the Wakefield Bush Restoration Society Inc and the Reserves Department of the Tasman District Council formally laid a complaint with the Police in regards to the worst vandalism seen in any of our Scenic Reserves for well over 17 years.

A very sincere thanks to Constable Jamie White for his supreme efforts in tracking the offenders down and for all those members of the community who gave us such support at this very difficult time. The five young men have admitted their offending and the matter is now for the police to deal with.

Hopefully this will send a message that any form of vandalism within our scenic reserves is totally unacceptable and will not be tolerated.

Many thanks also for those folks who took the time to contact me regarding our rabbit problem in our scenic reserves and for their suggestions to deter these pests. Your help is really appreciated.

On a lighter note and an additional attraction at the moment - you may notice the tuis doing all sorts of mid-air aerobatics as they catch insects on the wing to feed their young. A joy to watch.

One can also hear the shrill call of the shining cuckoo as it returns to our reserves from its "Island Holiday" and of course they will be looking out for any grey warbler nests in order to deposit their egg for the surrogate parents to foster and feed!

As with our home gardens this weather has certainly kept us busy weeding and doubly so in the bush. So if you ever feel like "heading bush" from your own gardens do feel free to join us every second Saturday in the month from 10am until noon - get your name on our telephone tree and we will remind you - or at least Evie will.

Regards Doug South, President Wakefield Bush Restoration Society Inc
Telephone 541 8980, email tuiville@xtra.co.nz





REDWOOD BUILDING Services Ltd
The pathway to your new home

FOR A PROFESSIONAL, DEDICATED BUILDING SERVICE
"FROM BEGINNING TO END"

- All building projects undertaken from large to small
- Trade Certificate qualified
- 33yrs experience
- Building inspections
- Site management
- Project management

REDWOOD BUILDING SERVICES LTD

ROWAN READER
ph 021 154 6040

Email: redwoodbuilding@clear.net.nz



Jason Preller A.N.C.H
Tel: 03 526 6095 Mob: 021 167 3803
Email: kernow4construction@gmail.com

Wakefield Health Centre

Good News!

Doctors and nurses get excited about strange things and this might be one of them, but don't stop reading because this is worth knowing about, especially if you are, or have kids who are 12-26 years old or a bit younger.

So, what are we going on about? Well, there's a virus with the catchy name of HPV (Human Papilloma Virus) which can cause genital warts, cervical, anal and even throat cancers.

Clever scientists have developed a vaccine that has been used safely, worldwide and in New Zealand for several years now. Imagine that – we can vaccinate against these cancers!

In New Zealand only girls from age 12 – 20 have been offered this free up to now – which, if you are a boy, could be seen as unfair.

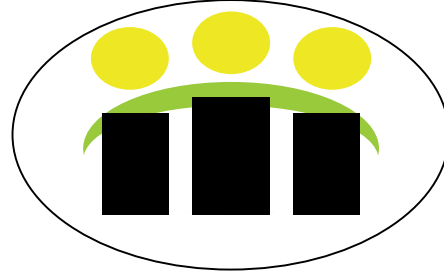
Now the government has said that from 1st January 2017 boys and girls from 12 – 26 years of age will be offered the vaccine, called Gardasil, FREE!!! It covers nine strains of the HPV virus.

Now because this virus is easily transmitted sexually, it makes sense to get it before someone becomes sexually active – but better late than never!

We will be making contact with those who are eligible in the New Year, or you may contact the Practice Nurses for more information on 541 8911.

For those of you off to university in the new year, you might want to consider getting vaccinated against meningitis, which is recommended for students who will be living in halls.

Unfortunately this vaccination is not free, but it's a really good idea - give the nurse a call to discuss any queries you may have, or to make an appointment.



Wakefield Health Centre

Surgery hours:

Monday to Friday 8am – 5:30pm

Wednesday 8am – 7pm

New Enrolments Welcome

Phone 541 8911

12 Edward St Wakefield



WAKEFIELD QUARRY

Drainage metal : Hard fill : Basecourse 70mm : Topcourse 40mm & 20mm
Landscape rock : Lime : Firewood

You Collect or We'll Deliver



566 Church Valley Road, Wakefield

Ph: 5419093

Mon - Fri 7.30am - 5pm

DESTINATION

Wakefield

COME AND EXPLORE WAKEFIELD

Wakefield has much to offer within a small area and so we have come up with the Destination Wakefield days.

The first Sunday in each month (from Sept to May) will be a happening time in Wakefield.

Pigeon Valley Steam Museum will be on steam, **Willow Bank Heritage Village** will be open to the public and **Villa Grove Estate** will be offering their special olive oils for sale.

Have a coffee and try the finest baked goods at **Wakefield Bakery** or have lunch at the **Wakefield Bistro** located in the Historic Wakefield Hotel.

Carol's Emporium, **Thistle Gallery**, **Armageddon Paint Ball**, **Wakefield Bike Hire**, **Barbars** and **The Village Gallery** are among other Wakefield businesses open - make a day of it!

All these activities will be open from 10am - 3pm.

**SUNDAYS: 4.9.2016 | 2.10.2016 | 6.11.2016 | 4.12.2016
2.1.2017 | 5.2.2017 | 5.3.2017 | 2.4.2017 | 7.5.2017**





LYNX MARTIN
Stonemason

All types of
Stonework

Quality
Workmanship
FREE QUOTES

Lynx Martin
Ph: 0274 383 227

SPORTS APPAREL

**Team Wear
Touch Shirts
Hoodies
Jackets
Branding**





Ph: 03 541 9641 E: info@wakefieldprint.co.nz
WEBDESIGN · PRINT · APPAREL




Nelson Travel Broker
your journey starts here

*locally Owned
& Operated*

Phone: 03 541 8417 or 021 545 799
Email: sue@nelsontravelbroker.co.nz

AIR NEW ZEALAND  **Holidays** TRAVEL BROKER

Check out what my clients have to say at
www.nelsontravelbroker.co.nz

Refresh Spa

QUALITY PRODUCTS
PASSIONATE PROFESSIONALS

**Christmas Gift Packs
Instore Now!**





PH: 541 9099 30 WHITBY WAY, WAKEFIELD Find us on 

Wakefield ELECTRICAL LTD

We Do All Electrical Work (incl. Caravans WoEFs)
Andrew Smith - Electrician/Inspector
— Est. 2013 —

03 541 8797 - 027 441 8797

"Your Local Electrician"

HotWash

SANDBLASTING & PAINTING

→Septic Tanks →Soak Pits →Grease Traps

Disposal Of All Liquid Waste
Draincleaning - Unblocking • Video Inspection
For Farming / Commercial / Domestic

John Ross 021 245 0550 Email hotwash@xtra.co.nz
Phone 03 541 9209

The Way We Were

Houses with History - Part 3 - 111 Felbridge - "The Doctor's House"

Prepared for the Waimea South Historical Society by Roger Batt

Every community has its local hero, someone who through their exceptional personal qualities, heroic endeavours and consistent concern for their fellow residents becomes part of local folklore. Dr Walter Relf Pearless was one of these. Apart from Edward Baigent he is probably the most honoured and respected citizen of Wakefield's past. His skills as a doctor, his war service and his love of cricket were all aspects of his nature which endeared him to the local people.

Born in East Grinstead, Sussex, England in 1854, he had gained a pass to Cambridge University at the age of 15. He continued his medical education at St Bartholomew's Hospital, London and then emigrated to Australia where soon after his arrival he married Marianne Raikes with whom he would eventually have eight children – four boys and four girls.

In 1884 the whole family moved to New Zealand where he set up his Wakefield practice. In 1885 Walter was appointed Surgeon-Major of the Waimea Rifles, a volunteer organisation for training territorial soldiers. On 1 March 1911 he was appointed Principal Medical Officer to the Canterbury Military District.

His military career began when he was one of the 200 men who enlisted to fight for the empire in South Africa in 1900 but he was recalled home early when his son Monty became seriously ill. Sixty years old when war broke out in Europe in 1914, he enlisted on 17th August and turned 61 on 19th March 1915, just over a month before the landing at Gallipoli where he was the oldest man to step ashore at Anzac Cove.

When Dr Pearless and his family first came to Wakefield in March 1884 he stayed in several places, eventually renting the former home of Henry Baigent in Edward Street until his large, imposing house built by McPhersons of native timber with all the latest improvements, was ready to be occupied sometime after 1885. Named Felbridge after the settlement bordering East Grinstead, his home parish, it still stands today on a much smaller parcel of land at the corner of Edward Street and Pitfure Road. Upstairs were six bedrooms and one bathroom while downstairs was a drawing room, dining room, study, kitchen, walk-in pantry, together with a surgery and a dispensary. A sunny conservatory was attached on the northern side.

Until the Murchison earthquake the brick chimneys had ornamental tops - now replaced with metal cowlings. There were extensive sheds and a stable with a loft for hay and groom's quarters. The carriage shed for the trap later became a garage. The grounds were beautifully laid out with tennis courts near the street corner, a summer house next to them and iron gates giving access to Pitfure Road and Edward Street. There was also a waiting room attached to the house for patients.

The local correspondent of the Nelson Evening Mail was so impressed that on September 25th 1895 he offered this comment:

'Among improvements to property, in our already neat looking village, I note an asphalt tennis court at the residence of Dr Pearless. The advantages of an artificial lawn are obvious, even to the uninitiated, in this fashionable and healthful recreation. The floor is always negotiable summer or winter and a heavy shower of rain falling previously does not interfere with the play as in the case of grass. Mr Plum of Nelson was engaged for the work, which has evidently been done in a workmanlike manner'.



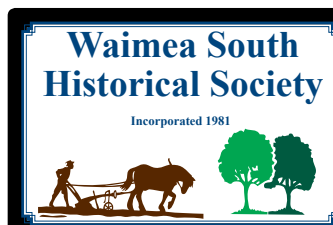
House soon after construction in 1885



Dr Pearless in the sitting room at Felbridge with his wife and five of their children. Note the fern patterned carpet.



Dr Pearless ready to visit patients



**Explore the
past with us**
www.waisouth.wordpress.com

The Way We Were [Continued]

We would expect nothing less - but that was not all. On May 6th, 1899, the reporter from The Colonist had this to say: Our doctor, Dr. W. R. Pearless, is progressive. He has telephonic communication with his partner at Brightwater and Richmond already. Now he has just had his residence fitted up with acetylene gas. The light is brilliant and clear. The jet in his surgery is hung very ingeniously. It may be raised and lowered, moved backward and forward, and round and round, throwing the light in any direction desired. This must greatly assist the rapid performance of operations, which naturally is a boon to the sufferer".

Walter's son Hugh decided to follow his father in the medical profession. When he graduated he joined his father in partnership. Hugh owned a house on the corner of Ellis Street and Lord Rutherford Road in Brightwater. Later, when Walter retired they swapped houses.

After Walter died on 23rd December, 1924, aged 70 and was buried with full military honours, the people of Wakefield erected an elaborate stone archway over the entrance to the Wakefield Domain as a memorial to him. The inscription reads: Erected by the people of the Waimeas in recognition of the service of Surg. Lieut. Col. W. R. Pearless V D (Victorian Decoration) in this district for 41 years and in the Boer War and Great War.

In 2009, Felbridge was offered for sale. The following is an extract from the real estate description of the property:

"Felbridge House and Cottage - 2 Homes and a World of Opportunity. Offers over \$585,000 considered. As you enter this private domain you will be struck by the pride and passion that has gone into recreating this beautiful historical dream. Set on a private and tranquil 1656m2 section this fabulous property combines 2 stunning residences that offer a world of opportunity. The fabulous Victorian homestead has been lovingly restored combining wonderful character features with unsurpassed taste and quality. The beautiful home offers 5 large double bedrooms and 2 bathrooms including a stylish ensuite. The living areas are perfectly positioned for all day sun with formal dining and 2 separate lounges featuring high ceilings, wonderful indoor outdoor flow and fabulous heating with 2 wood burners and a heat pump. The designer kitchen will capture your heart with wonderful space, quality appliances, a walk in pantry and a butlers sink. A private deck area is perfect for entertaining or relaxing in the outdoor spa.

Felbridge, "the doctor's house", was always a house of quality. I think that 131 years later Dr Pearless would be pleased to know that his house has stood the test of time.



View of Felbridge from NW



The lounge, bathroom and a bedroom in Felbridge today



Left: A Wakefield cricket team about 1895

Acknowledgements:

Stringer, Marion - Just Another Row of Spuds
The Copy Machine, Nelson, 1999
Stringer, Marion - More Wakefield Spuds The Copy Machine, Nelson, 2006
Nelson Provincial Museum website for background information and permission to use the photograph of Dr Pearless and family, Tyree Studio Collection no. 179507
Grant Chaney and Ray White Real Estate, Richmond, for photos of Felbridge today - courtesy of the current owner
Kete Tasman, Waimea South Collection - photo early Wakefield cricket team



FRIDGES • FREEZERS
WASHERS • DRYERS
DISHWASHERS • OVENS
RANGEHOODS

WHITEWARE SOLUTIONS LTD

For all your whiteware repairs in Wakefield, Richmond and the surrounding areas.

TIM LLOYD
79 Treeton Place,
Wakefield.

For service call: **027 685 5777** or **541 8877**

Wakefield Volunteer Fire Brigade

October already and we are now heading for the warmer and drier weather now as summer is just around the corner. Please remember if you want to light a small or large fire in the rural areas of the Tasman District you must get a fire permit from Rural Fire Network in Richmond. They can be contacted on 544 2441.

If we are called out to a fire and you don't have a permit, we have to extinguish the fire, even if it is safe and you may also be sent a bill for the call out costs and time involved. The Rural Fire Network permits are free and they give you good advice on how to manage your fire.

Also we must think about Guy Fawkes and fireworks. Please ensure you are around to help your precious children when playing with fireworks as scars can be a life time reminder.

Lighting your fireworks

- Read the fireworks' instructions. Be careful to follow the manufacturer's instructions when using them.
- Light your fireworks in a wide open area. Keep away from anything that could catch fire.
- Fireworks and alcohol/drugs are a dangerous combination.
- Always let an adult light the fireworks.
- Keep a bucket of water or a hose handy.
- Keep all unlit fireworks in their box or bag until you are ready to light them.
- Leave dud fireworks alone. Trying to relight them is unsafe.
- If you do get burned, hold your burn under running water for 20 minutes.

Callouts this month

Totaradale Golf Club	Structure fire
House truck on fire	Foxhill
Vegetation fire	Foxhill
Caravan fire	Wakefield

Total for the year - 73 calls

Think about others

- Put away the fireworks after 10:30pm.
- Keep your pets inside on Guy Fawkes Night.
- Point fireworks at the stars, not at your mates

As always take care and be safe

Fritz Buckendahl
CFO Wakefield

Mobile Feet Podiatry



Carole Horrell B H Sc (Podiatry)

Now available at Wakefield Health Centre
Phone Carole to book

Mobile: 021 0247 4037 | A/H 03 9275120

Email: carole@mobilefeet.co.nz

www.mobilefeet.co.nz

RURAL POST

Contact Nick & Jackie Costley

For all your RD2 Wakefield postal needs, including

- Prepaid Bags • Stamps • Local freight from

Wakefield, Dovedale and Tapawera.

Prescriptions from Wakefield.

Nick - 027 541 8581
Phone 541 8581

Delicious Honey straight from the valley

Mountain Valley Honey brings you award winning honeys, harvested from the beautiful Marlborough Sounds and stunning remote areas of the top of the South Island. Our bees forage to bring you Manuka, Native Bush, Autumn Gold, Honeydew and Kamahi honeys to enchant your tastebuds.

Find us at: www.mountainvalleyhoney.co.nz

Email: info@mountainvalleyhoney.co.nz

Visit us: Every Saturday at the Nelson Market



MAUREEN PUGH
NATIONAL LIST MP BASED IN
WEST COAST-TASMAN



I am always happy to help

p. 0800 MAUREEN | w. www.maureenpugh.co.nz
 e. maureenpughmp@parliament.govt.nz

Funded by the Parliamentary Service and authorised by Maureen Pugh, Parliament Buildings, Wellington



SPECIALISING IN
SOLUTIONS FOR ALL
BUDGETS AND NEEDS

Give Sam from Carter & Sons Concrete a call for a free Quote and Assessment on 0275-811-621.

CALL TODAY!!

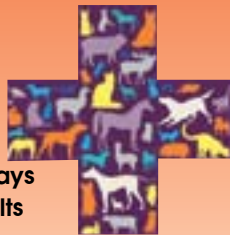
Proud to Sponsor Wakefield Football Club



Whether you have cattle, horses, dogs or cats, the staff at the Vet Centre always endeavour to treat each animal as an individual for personal patient care. Let us help you to treat your animals with the quality care they deserve. For a happier, healthier animal, family and lifestyle come see us at The Vet Centre Richmond.

Our services include

- Large animal and Equine services
- Small animals furry and feathered
- Surgery and dental procedures
- Digital x-ray and Ultrasound
- Free Travel to Tapawera on Thursdays
- Puppy Classes and nutrition consults and so much more!



24 hour emergency 03 544 5566

www.vetcentre.net.nz

Richmond Clinic - Gladstone Road 03 544 5566

Motueka Clinic 03 528 8459 and Mapua Clinic 03 540 2329

Keep an eye on our promos on Facebook



Bolitho
 Property Management
management for your peace of mind

LANDLORDS
We pay your Rent
 If your tenant doesn't.
Guaranteed!

Annitta Hodgkinson
your local property manager
 03 544 1782 - 022 021 1661



Diane Clare
Consultant Clinical Psychologist
& Psychotherapist
Mind Business Consultancy
 Tel 021 237 8660

Wakefield Health Centre Wednesdays
 Nelson Tuesdays and Thursdays
 Self refer or ask your GP to refer you
 Collecting names for Mindfulness Groups

www.mindbusinessconsultancy.com mindbusiness21@gmail.com
 PHO, WINZ, ACC & insurance funding accepted

Can we celebrate your special event or help remember someone dear to you?

Please send your obituaries, birth announcements, wedding stories, other celebration notices to us at

[windowonwakefield@gmail.com](mailto>windowonwakefield@gmail.com)
or ring 541 9005

A Matter of Accounts

by Sonia Emerson, CA, BBus

So far we have focused on Xero and MYOB, but of course there are a multitude of other accounting software providers as well. Here are just a few more of them with the key features:

Infusion Software

Infusion specialise in the development of accounting and business management software solutions providing a range of packages from the financials package through to a completely integrated job costing and service workshop solution. For those with slightly larger businesses or businesses with more complexity and greater reporting requirements, Infusion might be the answer as it offers a modular approach. You can pay for as many or as few modules as you need including:

- Financials – takes care of the financial reports, staffing, and cashbook areas. It has a date sensitive ledger system with extensive, multi-level reporting.
- Point of Sale – for use in the retail sector, this module allows you to track and manage your customers, their spending and purchasing habits and manage your inventory. The POS lane provides a user friendly solution allowing for sales to be processed quickly and efficiently.
- Fixed Assets - enables effective control and reporting of business assets. Track the purchasing and sale of all assets, and depreciate your assets.
- Service Manager - the software solution for those in the trade or servicing industry. From the staff on the road to the workshop and back office accounts Infusion Service Manager will look after it all. You can schedule jobs, manage your staff, send SMS reminders to your customers and staff. Email invoices and statements, electronically import your supplier invoices and pricebooks.
- Job Management - create and manage jobs, allocate labour, products, disbursements, and track job.

Saasu

- Saasu lets you quickly create transactions at any stage of the sales cycle. You can easily create personalised invoices, with or without accompanying payments, all from the same screen. Start with sales opportunities and estimates, and escalate them as they progress to orders and sales.
- Stop debtors falling behind with Saasu's schedule statements and reminders. Automatically prompt, follow up and enquire about overdue accounts without giving it a second thought. Customise the style of each statement to best represent your brand, and appear all the more professional... effortlessly.
- Multiple currencies – Saasu allows for trading in over 50 different foreign currencies. Run and operate foreign currency accounts, creating sales and purchases which are automatically converted back to your base currency for easy reporting.
- Attach receipts, warranties, serial numbers and other documents to each transaction, so they're always on hand when you need to refer back to them.
- Monitor the beat of your business with Saasu's bank account management tools. Link to dozens of online banking formats, and capture transfers between credit cards, director's loans and other bank accounts. Online merchants will love being able to connect their PayPal account to Saasu.
- Inventory Management – trade in virtual items with variable volumes, run voucher promotions across limited time frames and quickly perform business-wide stocktakes. Auto flag refill levels so supplies are always optimised, and connect to your e-commerce website through our flexible API. Serialise by product build or license number, to make tracking individual items easy. You can even monitor stock across multiple locations. Saasu also helps keep tabs on expiry dates, so you always know which product needs to go out the door first.
- Keep your e-commerce website up-to-date by synchronising it with your Saasu inventory.
- E-bay and Trademe - Connect to popular online auction sites, and automate the trading process.

Banklink

BankLink provides accounting practices with reliable, timely, and accurate client transaction data from over 100 financial institutions along with a range of software tools tailored to the needs and accounting abilities of small businesses. When you're running your own business, it's important to keep your mind on the job. You don't want to waste time crunching the numbers and completing your bookwork when you could be spending that time on your business. Banklinks range of simple solutions let you easily provide your accountant with the information they need. It means you can stay focused on building your business.

BankLink automates and simplifies your accounting by virtually eliminating manual data entry and the collection of receipts and bank statements. You'll no longer have to spend hours doing your books with software that is often complex and expensive to use. And, BankLink makes it easy for your accountant to send you regular financial information so you can make well-informed business decisions.

This information is intended as a guide only - it is not intended as legal advice. For more detailed information please refer to the legislation or seek legal and/or accounting advice.

All Accounts Matter Ltd

For All Your Accounting and Tax Needs



Sonia Emerson
Chartered Accountant

Mobile: 021 221 1009
74 Whitby Road, Wakefield 7025
Phone: 03 541 9005 Fax: 03 541 9305
Email: allaccountsmatter@gmail.com

Town and Country Talk

by Brenda Halliwell

Fleas - again!

Spring has arrived! Unfortunately spring also brings those nasty little pests we know as fleas. Though fleas can survive the winter under the right conditions, there is no doubt that the increased temperature in spring causes an increase in the numbers of these pesky insects.

Prevention is better than cure when it comes to fleas. If you wait to see fleas on your pet then there is already an established population of fleas (and eggs and larvae) in your house and garden. Remember when you treat a pet for fleas, the product is not only killing any fleas on them but prevents more fleas jumping on board. We now have flea products for cats and dogs that last for three months and even longer, so it's easy to keep pets protected and your house flea-free throughout the year with very little effort.

Getting the right treatment for your pet is best sorted at your vet clinic. We can help you understand the flea life cycle and give you the best advice regarding the various different products. There are many products available including topical drops, oral tablets, sprays and collars. So we can provide the best product for you and your pet, whatever your lifestyle.

There are lots of different reasons why pets itch and scratch. If your pet is still scratching despite flea treatment, make your pet an appointment for a checkup or pop in for some advice – there's a lot we can do to make them more comfy.

Drenching

On the farm, springtime also provides the perfect conditions for parasites to flourish. So it's the time of year when having a good drenching program for your stock is essential.

There are many factors that influence drench choice and frequency such as the species being treated, age, lactation, stocking density, weather conditions....Blanket drenching everything increases the chance of drench resistance as well as possibly being unnecessary and therefore a waste of time and money. So we advise doing faecal egg counts to determine parasite numbers and whether you need to drench. And we can do larval cultures to diagnose the parasite species present so you drench with the most effective product.

Drenching and parasite control is a massive subject that can't be covered in a couple of paragraphs. For more information and advice specific to your situation, talk to Mike, Danny or Roger in our Richmond Clinic.

A couple of reminders!

Summer holidays are coming up soon – if your pets stay in kennels or catteries, now's the time to check if their vaccinations are up to date – don't forget!

On November 12 come and enjoy the fun at the Wakefield School Gala. There'll be loads of entertainment, food and goodies to buy, and cute furry critters to cuddle at the Petting Zoo.



**TOWN & COUNTRY
VET**

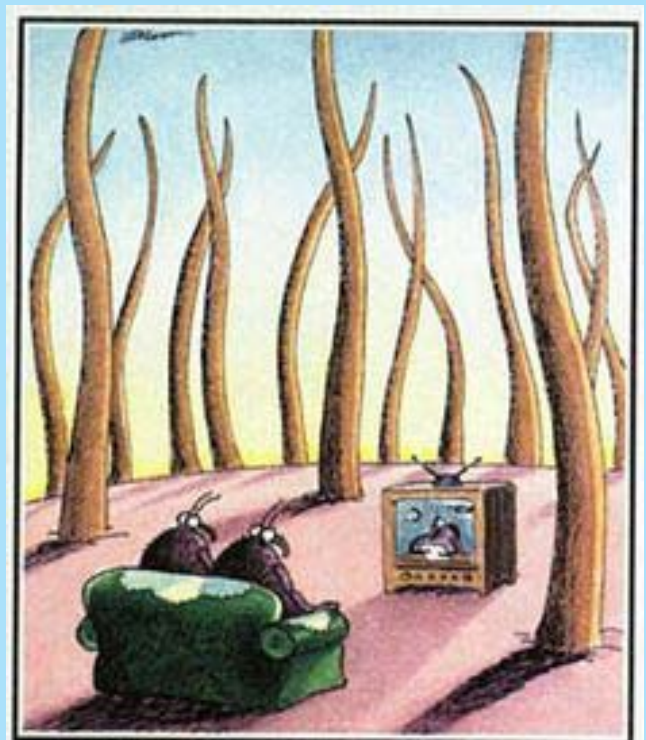
"...for all creatures great & small..."

Open Monday - Thursday 8.30-5pm

Consulting Hours

Monday afternoon with Brenda
Tuesday morning with Brenda
Thursday morning with Paula

And the following weekend we'll be at the A+P show in Richmond. Come and see us at the Town and Country Vet Animal Experience!



"Several more deaths have been reported in the neck area, and although the authorities won't comment, residents are blaming the new collar."

Ph 541 8974

info@tcvet.co.nz * www.tcvet.co.nz

Edward Street, Wakefield

Head office 35 McGlashen Avenue, Richmond

544 1200 24 hours





P.O. Box 62,
Brightwater, 7051

2016/17 SEASON EVENTS.

"On Steam" first Sunday monthly, September to May. (January on the 2nd day of the month.) These days are also part of Destination Wakefield where many attractions and lunch venues around the Village are all open together for a great day out. Higgins Heritage Park sheds are open on the 3rd Sundays monthly until winter.

Sunday 4 th September:	On Steam, and Classic & Collectable Car Show.
Sunday 2 nd October:	On Steam.
Sunday 16 th October:	On Steam for Touring Classic Trucks. All welcome.
Sunday 6 th November:	On Steam.
Sat. & Sun. 12 th & 13 th November:	On Steam and Logging Weekend.
Sunday 4 th December:	On Steam.
Monday 2 nd January:	On Steam, coincides with Wakefield Craft Day.
Sat. & Sun. January:	On Steam and Vintage Machinery Club Show.
Sunday 5 th February:	On Steam.
Sat. & Sun. 4 th & 5 th March:	On Steam and Transport Museum Show
Sunday 2 nd April:	On Steam.
Sunday 7 th May:	Last Steam Day, and Military Re-enactment Action Day.

Sheds will be open only on first Sunday of June, July and August for winter. Special visits may be arranged with Park Manager. (Allan, 027 319 7427)

Quiz

THIS MONTHS QUESTIONS

1. Who wrote Frankenstein back in 1818?
2. In Stephen King's 1986 novel It, what human form does the predatory monster most often take?
3. Name the Charles Dickens short story about a haunted railway junction.
4. Who wrote the novel The Phantom of the Opera?
5. Who created the evil wizard whose name must not be mentioned?
6. In which year did Boris Karloff make his screen debut as Frankenstein's monster? Was it a) 1942, b) 1926, c) 1931?
7. On which historical figure was Bram Stoker's Dracula said to have been based?
8. In which city did the two Williams, Burke and Hare, murder 17 people to sell their corpses for medical dissection?
9. Which deadly practice was last carried out in England in 1684?
10. What is the name of the legendary ghost ship that can never make port, doomed to sail for ever with its cursed crew?

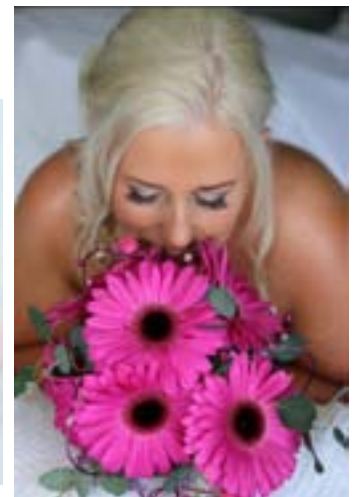
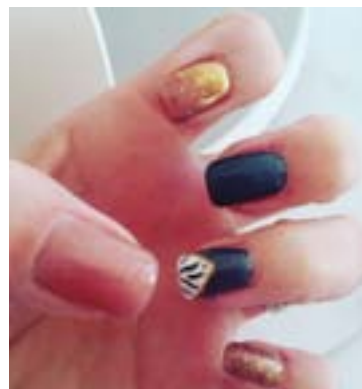
Admire Nails & Beauty

Admire Nails & Beauty has a new location in the heart of Wakefield village. This peaceful new room lets you escape from everyday life and indulge yourself with some pampering.

Open Tuesday - Friday 9 am - 2:30 pm; Tuesday & Wednesday 6pm - 8pm; and Saturday 9:30am - 12 noon.

As stockists of NZ made body products 'Bonbon Vegan', Admire is proud to make available this beautiful range of body scrubs, body washes, bath salts, cleansers and even products for the hardworking man. These make great gifts, or treat yourself!

With wedding season almost upon us, the diary is filling up quickly. Christmas appointments are already being booked, so call now and make a date for special occasion makeup or everyday beauty requirements.





**We'll make sure
you're good
to go!**

BEAT THE RUSH!

Book your vehicles in now and make sure they are **ready for all those summer road trips!**

- **WOF'S** (Cars, Caravans, Motorbikes, Trailers & Tractors)
- **Wheel Alignments & Tyres**
- **All Vehicle Servicing & Repairs**
- **Petrol, Diesel & LPG**



WAKEFIELD AUTO SERVICES LTD

67 Whitby Road, Wakefield
Phone 541 8121



Admire Nails & Beauty

The days are longer
The weather is getting warmer
Now is the time to come in and pamper those feet

With plenty of beautiful new season colours
you will be spoilt for choice

Express Pedicure \$45

Deluxe Pedi \$60

Shellac toes \$40

Polished toes \$20

For all your beauty requirements located
in the heart of Wakefield Village

Cheryl Roach Phone 03 541 8345
Qualified Beauty Therapist or 027 537 9600



"...for all creatures great & small..."

Open Monday - Thursday 8.30-5pm

Consulting Hours

Monday afternoon with Brenda

Tuesday morning with Brenda

Thursday morning with Paula

Ph 541 8974

info@tcvet.co.nz * www.tcvet.co.nz
Edward Street, Wakefield

Head office 35 McGlashen Avenue, Richmond



544 1200 24 hours

Wakefield School

Toroa's Litter Inquiry - Our journey so far...

As told by the Year 3 and 4 students of Toroa, Wakefield School

Way back in term two, our teachers asked us if there were any problems around the school that we would like to take charge of and fix. We talked and settled on the litter problem at our school. This is an ongoing problem that has been around for ages. We brainstormed a heap of reasons why litter around the school grounds was a bad thing and we were confident that we could fix this problem without too much trouble, after all the only thing that we really needed to do was pick it up, wasn't it?!

When we talked about what sort of things we had done to solve the litter problem in the past, we realised that we really needed to come up with some new solutions because the things that we'd been doing for years just weren't working; the litter kept coming back. We eventually decided that we needed to begin by finding out where all the litter around our school was actually coming from. So we asked the other classes to help out by delivering all the litter they collected during an end of term school tidy up to us. We sorted it all into piles and counted every piece of rubbish in each pile. There were 73 lunch bags, 205 pieces of paper and cardboard, 56 food scraps, 140 chippie packets, 156 old bottles and containers, 212 pieces of Gladwrap, 228 food wrappers and 102 odds and bods. In total there were 1172 pieces of rubbish and, sadly, we think that 968 of those pieces of rubbish probably came from our lunch boxes.

We knew we had to do something different from the usual plan of just picking the litter up but we decided that we needed to do a little bit more research in our class first. We came up with some crazy solutions to our litter problem and had a lot of fun imagining the possibilities; most of our crazy ideas were going to cost way too much money and wouldn't actually stop more litter from arriving.

Then someone suggested 'nude food' also known as a 'naked lunch'. What is this? we hear you ask. Well, a nude food lunch box has no rubbish in it, your food is totally unwrapped meaning it is naked. We thought if we don't bring any rubbish to school then it can't be dropped or escape to become litter! So one morning, after deciding this was an idea worth more investigation, we all looked at our own lunch boxes and counted up all the pieces of rubbish in them. We had an incredible total of 187 pieces of rubbish in our lunch boxes and only three people had a nude lunch. We knew we could do better than this but we needed some help.

So our principal Mr Verstappen visited us and explained he could share some information that may help with our nude lunch idea. He told us that the first step towards our plan would be to get other people thinking the same way as us - we would have to convince them of our good idea. He told us we needed to convince the Student Council, the Enviro Committee, the Board of Trustees, the PTA, the parents, the rest of the children at Wakefield School and the staff. We decided we needed to write letters to these people to see if they would help us on our mission as well as including Chateau Rhubarbe and Subway on the letter-writing list as they provide some children with their lunch.

After sending out the letters, we had replies from classes at school telling us they were really keen to get on board, as well as the Enviro Committee and the Board of Trustees. A big achievement for us was getting Subway to make a change to the way they supply our lunch orders. In our letter we asked them if they would consider replacing the plastic bags the sandwiches arrive in, for paper bags. Well, they went one step further - after saying yes, they also suggested that they would reuse the paper bags if they were clean enough. Subway, thank you for listening to us - you convinced us that all the hard work we have been doing trying to convince everyone to have nude food has been totally worth it. You have also shown us that our eight and nine year old ideas are just as important as any from an adult. Subway, you get a big thumbs up from us!!

This term we will continue along our journey in persuading all the children at school to have nude or nearly nude lunch boxes and we are looking forward to working with the Enviro Committee, and any other people who are willing, to help us take the big steps towards reducing the amount of litter at Wakefield School.

We sorted the litter that we picked up and discovered that most of it was food wrappers from our lunch boxes.



Felbridge Cottage
6 Pitfure Road, Wakefield

Available throughout the year
for short or long stays.
Phone Phill and Brenda
03 541 9520

www.felbridge.co.nz



we're not out to change **THE GAME**
we just **REFUSE** to **PLAY** it



**Thinking
of Selling in the
Summer?**

**Want to help your
Community?**

We do too!

You're Invited

to join us in our support of the Business Breakfast Club Charitable Trust by bidding
for our professional real estate services (reserve set at \$1,000)

**Big Brekkie Charity Event at Trailways
Tuesday, 15 November 2016**

For tickets & info <https://novemberbigbrekkie.eventbrite.co.nz>

**All proceeds from this auction will go to
the Nelson Marlborough Rescue Helicopter Trust**

First step is easy... just phone us on

0508 767 796



Wendy Pearson
021 567 722
03 541 9667



Debbie Watson
021 462 629
03 543 2629



Hayden Stevenson
020 468 7348
03 544 9632



Avner Nahmias
021 265 8668
03 545 2398



Zoe Godfrey-Payne
021 233 2439
03 547 3117



Owen Tasker
021 047 6352
03 5380 768



Did you know that Wakefield 4 Square check the public AED (Automated External Defibrillator) daily?



The battery has already been replaced since it was installed.

all about you
BEAUTY THERAPY

Christmas Party

Come and join me for Xmas drinks and nibbles and get your shopping done at the same time!!
Xmas Raffle drawn, great gift packs available, refreshments provided.
Bring a friend and pull a Xmas cracker to see what treatment special you win!!!

Saturday 3rd December, 3 - 5pm
at All About You, 1 Bird Lane
phone 541 9510 to RSVP by Nov 26th

New to the Salon

Phone: 541 9510
Mobile: 027 6143 298

1 Bird Lane, Wakefield
www.allaboutyoubeauty.co.nz

one for **them**
one for **you**

healthy skin is a gift set away.

dermalogica

Wet 'N Wild Weekend

Wakefield School
& Community
Swimming Pool

DOOR
SALES

6th of November

\$2 per person general entry.
\$5.00 per family.
Non-swimming caregivers free!

Opening day discount—family
season key \$115 if purchased on the
day.

\$125 per family before
1 December.

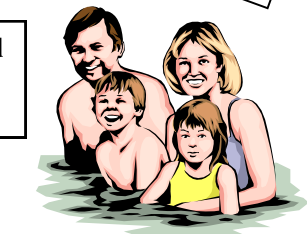
(\$135 if bought after 1 December)
\$90 for Senior Citizens (65 yrs & over)

All prices include a \$20 refundable
bond.

Sausages, Tea, Coffee &
Soft Drinks will be
available for purchase.

Heated
Pool
26°C

Fully Supervised
Under 8 years **MUST BE**
ACTIVELY supervised by
parent/caregiver
Giant Inflatable Obstacle in
main pool



For more information ph:
Karyn Young 021 112 4203

Sunday 6th November
10.00 am—2.00 pm



WAIMEA QUILTERS

OUR CHRISTMAS 'SEW DAY' 2016 WILL BE ON

SATURDAY 12th NOVEMBER FROM 9.30am – 3.30pm

At

ST JOHN'S CHURCH AUDITORIUM

120 EDWARD STREET, WAKEFIELD

There will be two tutored sessions

1) Needle Case Kit

2) Specialty Christmas Cards (\$5.00 for this session)

Or

Bring your own Christmas Project or UFO to work on.

You will also need the completed Block Challenge from last Christmas and

Show & Tell items, Pot Luck Shared lunch. Tea and Coffee & chat
provided! New Members/Visitors Welcome!

Contact Marilyn on gibbs@ts.co.nz by October 30th for numbers to take
part in the sessions as kits will be made for you. Otherwise just come
along!

Wakefield School Twilight Gala

Saturday 12 November 3:00 - 6:30pm

Donation entry gives you a map and a chance to win!

Catch up with the locals ● Enjoy tasty treats

West Coast whitebait ● Wild pork sandwiches ● Hot spit roasted mutton

Silent Auction ● Community and school cookbook on sale

Toys ● Plants ● Clothing ● Books ● Garage Sale

Live entertainment ● Something for everyone

SEE YOU THERE!

THE CAKE BAKE COMPETITION

Kindly sponsored by Wakefield 4 Square



1st Prize:
\$100 4 Square Voucher
2nd Prize:
\$50 4 Square Voucher
3rd Prize:
\$25 4 Square Voucher

Free entry. Amateur bakers only. Bring your cakes to the school office by 12pm
Friday 11 November (day before the gala) to be photographed and judged by
Chris Jack & Jacqui Hore. Your cake is judged on presentation AND taste.
Photographs of cakes will be displayed on the day of the gala at the cafe in Room
9. Winners will be announced at the gala. To enter you agree that your cake is a
donation to the Wakefield School gala and will be sold in slices in the cafe.

2016 Wakefield School Gala Kids Competitions

Free for all school-aged children to enter

Kindly sponsored by Programmed Property Maintenance

The Coolest Cupcake



Each Wakefield School student is allowed to
enter one cupcake in the competition,
decorated in whatever manner they wish.
They will be judged on decoration, not taste,
although all decorations should be edible.

The Best Vegetable Creation



Each Wakefield School student is allowed to
enter one vegetable creation in the
competition. The vegetable creations must
have fruit and/or vegetables as the main
component of its construction. These will be
judged on creative flair, innovative use of
materials, and overall presentation.

Important Stuff:

Cupcakes and vegetable creations should be presented on a clean, flat surface such as a plate
or tray and should be clearly marked with the students team (Piwakawaka, Kereru, Tui, Toroa or
Karearea) written somewhere on the top, and student's name written underneath.

Bring your creations to Room 10 on Saturday afternoon before 3pm at which time the doors will
be closed for judging. Following judging, the doors will be opened again so that everyone gets
a chance to see the fabulous creations. Certificates will be awarded and placed on the entries,
but prizes will be given out at an assembly after the gala. Creations must be removed at the
end of the gala.

ANSWERS FROM THE QUIZ FROM LAST MONTH

- When did the Falklands War start?
1982
- The old halfpenny had a ship on the reverse side - Name the ship which inspired the design.
Francis Drakes Golden Hind or Pelican
- What flower connects a novel by Victor Hugo and an opera by Verdi?
Camellia - La Dame aux Camellias and La Traviata
- Which play is said to make Gay rich and Rich gay?
The Beggars Opera - John Gay wrote it and John Rich was the Director and Theatre Manager
- What is a jury mast on a ship?
An improvised mast made to replace one lost or broken
- What is progeria?
Premature aging syndrome
- What was Chief Sitting Bull's original name?
Jumping Badger
- Who was the last woman to be executed in the UK?
Ruth Ellis in 1959
- What is a Zebroid?
A cross between a Zebra and any other equine
- Which sport can only be played by right handed players?
Polo



Kaimira
ESTATE

YOUR LOCAL CELLAR DOOR IS NOW OPEN FOR THE SUMMER SEASON

WE OFFER A WIDE RANGE OF WINES TO SUIT EVERY OCCASION PLUS CLEARANCE LINES AND MIXED CASES AT GREAT PRICES

CALL IN BEFORE 8 NOVEMBER TO GET 10% OFF REGULAR PRICES

HOURS: 10AM - 4PM MON-SAT
CLOSED SUNDAY

THE SECRET OF ENJOYING A GOOD WINE:

1. Open a bottle and allow it to breathe.
2. If it does not look like its breathing give it mouth-to-mouth.



KAIMIRA WINERY, 97 LIVINGSTON ROAD, BRIGHTWATER

PH - 542 3491

WWW.KAIMIRAWINES.COM

Craig Smart

CONTRACTING LTD

DIGGERS & TRUCK WORK

- Landscaping - Topsoil Screening
- Root Raking - Site Clearing
- Driveways - Gravel Supplies
- Trenching - Posthole Boring

541 9626 or 0274 440 441

Now available: MOBILE TOPSOIL SCREENER

We will screen your topsoil on site.

FIX UP
SET UP
BACK UP
CLEAN UP
TABLETS &
COMPUTERS



In Nelson
since
1997

548 1787
027 224 0955

Fran's the Man!

fran@mobilecomputing.co.nz

Still no call-out fee &
we still come to you.







Contractors

NEW HOMES * ALTERATIONS

gbc.ltd@xtra.co.nz

Dailyl

0274 840 719

After Hours

03 541 8482

www.gardinerbuildingcontractors.co.nz

Wakefield Bowling Club

by Tony Eames

The summer season is now well underway with social bowls on Monday and Friday afternoons, Club Championships and Interclub all getting started. We welcome several new members for the start of the season.

Community Bowls starts on Thursday evenings from 10 November 6 - 8pm.

Bowls and instruction provided.

Food and drink available.

Come alone or with friends and family and we will organise teams.

Adults \$5, children free.

For more information: phone Tony on 5418316.

Club Championships.

The first championship to be played was the Men's Junior Singles with Steve Goodfellow beating John Oakley 21 - 19 in the final, John taking an early lead but Steve fighting back well.

The Men's Open Pairs was won by Peter Sisterson and Tony Eames beating Stu Peterson and Kevin Galvin 14 - 13 in the final, with Peter playing some phenomenal shots to clinch the game.


In the Interclub 5s the Men played in the Premier Reserve division, one Wakefield team won its section with the Triples of Gordon Hope, Peter Sisterson and Tony Eames being undefeated over five games with four wins and a draw and the Pairs of Stu Peterson and Kevin Galvin winning three games. The other Wakefield team finished 4th in section B, the Triples of Ron Charles, Peter Fitzwater and Trevor Woodbury and Pairs of Les McJarrow and Graham Burrows both with two wins and one draw. Both teams go forward to the playoffs. The Women's team of Margaret Eames, Julie Hall, Carolyn Mason, Linda Sisterson and Pam Bonis played in the Premier Division against the top players in the region, the Triples winning one game and the Pairs drawing one.

Metal collection.

The Club will be pleased to pick up your scrap metal, dismantle TV aerials, car batteries, old wiring, etc. Phone Trevor on 541 8855.


New players welcome at anytime as above or phone Tony on 5418316. There are opportunities to cater for all from social bowls through Club competitions to top level play against international players.





Master Trainers in NLP
(Neuro-linguistic Programming)

- NLP Practitioner Training
- Feldenkrais® Method
- Coaching, Therapy & Supervision
- Residential healing retreats



Patricia and Richard Greenhough, Lifetime Learning (NZ) Ltd

33 Pigeon Valley Rd South Branch
RD2 Wakefield, Nelson
Ph: 03 541 8122
Email: info@lifetimelearning.co.nz
Web: www.lifetimelearning.co.nz



Hair Raisers
Magic Can Happen

Ph 541 8312

Health & Wellbeing - Physio

R.I.C.E Explained

By Kate West, Physiotherapist (BPhty) at Wakefield Physio

Rest, ice, compression and elevation are commonly known as R.I.C.E and should be your first response after a sprain or strain. R.I.C.E is a simple and easy way to help reduce your pain, swelling and recovery time following an injury. R.I.C.E should be started within the first 24 hours of an injury and the reasons for doing so and what you should do are outlined below.



Rest

- * Rest is important especially for the first 24-48 hours following an injury. This doesn't mean you have to be completely immobile but you need to take things easy. If you continue to exercise then you will cause more damage to the affected area.
- * With an injury your blood vessels are also affected. By resting you are trying to reduce the amount of blood flow to the injury site.
- * As more bleeding = more swelling = more tissue damage = longer time to heal.



Ice

- * Ice is used to constrict the blood vessels. This decreases the flow of blood to the damaged tissue, and therefore minimises the amount of swelling and further tissue damage. Ice can also help to reduce pain.
- * Ice for 10-20 minutes every 2-4 hours for the first 24 hours. After 24 hours you can reduce the frequency to every 3-6 hours. Continue this for the next 24-48 hours where possible.
- * Use crushed ice in a damp tea towel, a purchased ice pad or home-made ice cup by filling a styrofoam cup three quarters full and then put it in the freezer.
- * Be aware that ice can burn, so do not put directly on your skin.

Compression

- * Compression limits and delays swelling and can give you the feeling of support which is good for pain.
- * Use either a compression bandage, a crepe bandage or sports tape.
- * If you don't know how to apply sports tape then see your physiotherapist who can apply as well as teach you how to do correctly.
- * Be aware that most sports tape are made with latex. If you have a skin allergy to latex it is best to avoid. However the good news is that there is now a latex free sports tape available.



Elevation

- * Elevation reduces swelling and can help to reduce pain.
- * Try and raise your injured area above your heart eg for an ankle injury prop your foot up on the sofa with some pillows whilst you lie down.

Sometimes you will also see R.I.C.E.D. The 'D' stands for diagnosis. If you are concerned about pain or the amount of swelling of your injury then please seek the advice from a doctor or physiotherapist. If this continues for more than 48 hours come and see your physiotherapist who can recommend strategies to get you back on track. And remember no referral is necessary to see a physiotherapist.



HOUSE REPAIR

Small Job Specialist From Start to Finish

OVER 25 YEARS EXPERIENCE

Carpentry | Stopping | Painting | Maintenance

Brian Grant

027 541 9250 | brianwindhamgrant@gmail.com



Kate West NZRP, BPhty

Accident & Sports Injuries

Neck & Back Pain

Vestibular Rehab

All Sprains & Strains

Pre/ Post Surgical rehab

ACC & PRIVATE TREATMENTS

03 541 8911

At the **WAKEFIELD HEALTH CENTRE** 12 Edward Street, Wakefield

info@wakefieldphysiotherapy.co.nz

www.wakefieldphysiotherapy.co.nz

Wakefield Toy Library

What's Happening at Wakefield Toy Library?

by Liz Ashburner

We have new toys! Thanks to funding from the Lotteries Community Grant we have been able to buy \$400 worth of new toys (as well as covering our insurance for the year).

We have new wooden food, an awesome glow-in-the-dark city set, chunky CAT diggers and much more.

Come in and check out the new toys - we are open the first and third Saturday of the month, 9:30 till 11:30, opposite the school on Edward St.

We aim to keep hire fees as low as possible and standard membership starts from just \$25 a year. This means you can provide the variety and stimulation your children need without breaking the bank or filling your house with toys!



Digger For Hire



**6 Tonne digger
Dry hire or with
Experienced Operator**

Call:

**Richard Winn
0274 362 897
AH: 541 9567**

This month we will be holding our AGM. We have a passionate team but are always looking for new committee members to help share the load and ensure the sustainability of this great community resource.

If you are interested, come to our AGM on Wednesday 23rd Nov, 7:30pm.

Lynda's Aerobics/Pilates Classes Term 4, 2016

St John Worship Centre, Edward St, Wakefield.

A new 7-week term starts Thurs November 3rd, ends Thurs December 15th.

**Thursdays 9.05am - 9.55am
followed by Pilates 10.05 - 10.55am**

You can do either or both classes.

Aerobics \$60.00 for the term.

Pilates \$60.00 for the term.

Discount for both sessions - \$100.00 (\$20.00 discount)

No special skills, gear or fitness levels required for either class.

New folk are most welcome - we are a friendly bunch and usually head off for coffee after Pilates.

Please phone Lynda 5432268, txt 027 222 1491, email lynda@hht.co.nz to book and for details. Classes are on a per-term basis, no casuals sorry. If you commit for the term (and pay!) you are much more likely to come, then you'll get results. If you have to miss a class you can truck on over to Mapua and make it up on a Wednesday or Friday.

Painter



**Interior, Exterior
& Wallpapering**

**For a Free Quote
Phone Peter Thompson
027 444 93 64
A/H 03 541 9678**

62 Whitby Rd Wakefield



Christmas is coming



Santa Claus
instore on the 2nd,
9th, 16th Dec
Free photo with Santa
3pm to 4:30pm

Watch out
for the January
colouring
competition



Spend \$30
and go in the
draw for
two cape cod chairs
and a table.
Drawn on 23rd Dec
at 3pm

See
our Secret
Santa under
\$10 gift table



WAKEFIELD PHARMACY
the caring pharmacy

Join us on our FACEBOOK page
and be in the draw
to win our monthly prize
www.wakefieldpharmacy.co.nz



- *Planting and re vegetation projects
- *Landscaping projects
- *Arborist work
- *Tree felling
- *Hedge trimming
- *Shrub cutting and gorse control
- *And much more green care of your property

This is done by a trained arborist
and nurseryman with many years of
experience in plant production
and the landscape business

contact MORTEN for a free quote
Ph: 021 206 9914 or 541 86 85
email: mortenlausen@gmail.com

Full insurance cover while all work is being done

Fighting for a fairer future.



Damien O'Connor
MP West Coast/Tasman



free phone 0800 326 436

234 High Street, Motueka | Phone 03 528 8190
208A Palmerston St. Westport | Phone 03 789 5481

 **damienoconnormp**

Authorised by Damien O'Connor. 208A Palmerston St, Wsp.



Live Local Shop Local

Thistle Gallery, Higgins Road, Wakefield

by Rose Shepard

For twenty years Richard, Scott, Jonathan, Laura and I lived in the commercial building between the Wakefield Hotel and the village supermarket. We moved to Wakefield in 1987 following the share market crash which saw the disappearance of our money saved for tax. One of the curses of being self-employed is that you never know how much you need put aside, and we always saved into a superannuation scheme which 'disappeared' with the '87 financial crisis.

After selling our house in Nelson and paying everything off, we had enough money left to buy the (at that time) very run down commercial building in Wakefield. After a couple of years living in Wakefield we realised it was the best thing that could ever have happened to us! We loved Wakefield, the Playcentre, the business community, the school, and above all else, the people. Richard joined the Wakefield Fire Brigade, I started helping at the Playcentre and once it was known I was 'Arty', helped with school productions and sets for the Wakefield Country Players. Our children grew up in this community, their friends are still our friends, and although we don't live in the heart of Wakefield any more, we still stay connected, going to the Wakefield Country Players productions, attending the Wakefield School Gala and supporting local businesses.

After 20 years of living at 30 Edward Street (and it is great to see it up and running again as a gallery) we wanted a change and decided to buy a piece of land at the end of Higgins Road. It was bare land, no services, no house site or driveway. We started by living in our campervan, but unfortunately it caught on fire and thank you Wakefield Volunteer Fire Brigade for coming to the rescue. Next came a yurt, which we are still living in, followed by the building of the studio and workshop (studio for me, workshop for Richard). We are still saving to build the house... I have been working at Nayland College as their Performance Art Co-ordinator and Jubilee Event Manager. I decided to go back to full time art practice once their school production, 'Annie Get Your Gun', was over and now I have started painting in the studio again.

To show what I am doing, I have the studio open on the first Sunday of each month to coincide with 'Destination Wakefield'. From November I will be setting up the Waimea Sheep Dog Trials rooms at the Wakefield end of Higgins Road as a 'pop-up' gallery once a month in collaboration with Sjef Lamers.

Sjef creates beautiful stone sculptures which are well worth viewing. He has a background in working with nature, trees and soil. His eyes have been trained to observe, understand and appreciate organic shapes, forms and textures. Natural stone is the perfect medium for Sjef's skills, enabling the use of organic compositions in a balanced and rhythmic movement. He says, "I tend to work my stone 'Entaille Directe' (intuitive sculpting). This approach respects the material and the raw form of the stone and leads me to the end result. Every stone puts me onto a new exploration of the inner world. I work from the outer to the inner spheres of the stone: once a piece of the stone is off, it's definitely gone! All decisions you take as an artist need to be well thought through. I use hand tools, therefore, so I can touch the stone whilst working".

Sjef sculpts in the open air in a peaceful valley surrounded by rolling hills, forests and green pastures, which invites and motivates him to make sculptures with meditative qualities.

My paintings are inspired by the environment surrounding Wakefield and Spring Grove as well as the wider Nelson area. The paintings show the relationship between the development of the landscape by farming and the remnants of what was before, the trees such as kowhai and totara.

The pop-up gallery is named 'Thistle Gallery', after the thistles that grew profusely when we first started developing the property, and also in reference to our Scottish ancestry, and will be open from 10am to 4pm on the first Sunday of each month. Call in and talk to either myself or Sjef. You are also welcome to drive up to the studio, take in the view of Wakefield and to see new work in progress.

Rose Shepard

Artist

Thistle Studio

337 Higgins Road

Wakefield

Studio phone 541 8381

Sjef Lamers

Sculptor

Mobile 027 428 9002



Wakefield Playcentre

by Liz Ashburner



It has been a month of birthdays at Playcentre – happy birthday to Isla, Esmae, Phoebe and Alejandro who all turned two in October! Our sessions have been full of energy with so many young children exploring their worlds and challenging themselves physically with lots of climbing, jumping, sliding and swinging.

The changeable Spring weather can be a challenge when you have small children but rainy days are fun at Playcentre. We have ramps, slides and climbing frames that can be set up inside the centre to enable physical play and we often have a small group that venture out to play in the puddles – stomping around or playing with trucks.

Coming up in November we are planning a long awaited trip to Wild Oats Farm to meet the baby animals and enjoy pony rides.

We will also be hoping for some more settled weather so please remember to bring sun hats and sunscreen (and a change of clothes) every day.

Wakefield Playcentre is open Monday to Friday during term time, 9:30 – 12 and you can find us just past the school on Treeton Place.



40th Annual Wakefield Craft Fair Monday 2nd January 2017



Wakefield Village Green
and Wakefield Hall
Over 60 stalls
Drinks and Food available
Rain or Shine!



Dress Up Box
Costume Hire & Gifts

*Kids, Adults
Costume Hire,
Party Accessories
and Gifts*

Shop Hours
Tues, Wed, Friday 10 - 5pm,
Thurs 10 - 6.30pm,
Sat 10 - 1.30 pm

136 Queen Street
Ph 5444 699 or 021 313 140

Live Well Stay Well

by Margaret Clark

Last month we enjoyed a visit to the top of Wakefield. After our coffee at the Chateau Rhubarb, Bob and Lynn Croys garden gave us some great views over Wakefield, and with so many interesting plants and flowers to browse through. Many thanks to our hosts for showing us their lovely property (see photos).

“Live well Stay well” is a health and social group that meets fortnightly in Wakefield from 9.45 - 11 am. All interested are welcome to attend especially if you are new to the village. A varied programme is organised which is informative and fun plus regular coffee and chat sessions. The group is followed by a walk around Wakefield for those who feel like being more energetic.

November 1 - Coffee at Headquarters Brightwater followed by a local walk.

November 15 - We are going to Eyebrights Christmas shop at 10.30 am followed by lunch at the Wakefield Hotel 12.00 noon. Meet outside the Wakefield hall for transport 10.15 am. This is our last planned session for 2016.

Anyone is welcome to attend. Any enquiries or to go on our email list to let you know what's happening, please call Margaret 5419693 or Yvonne 5422235.



AVAILABLE TO RENT

TOTARA VIEW COTTAGE
164 Totara View Road,
Wakefield



Furnished - One bedroom (queen bed) with ensuite shower and toilet.

Living area with heat pump, kitchen with underfloor heating, laundry, study area. Linen and towels included.

Rent - \$250 per week incl electricity and gas

Contact: 03 541 9689 or 027 364 0073

**Check out our Focus Wakefield
Facebook page**

www.facebook.com/FocusWakefield

**Share your stories, photos, events with the community.
Post items wanted, for sale, help needed etc...**



Ladley Contracting

P: 027 606 2767

helping you grow

Enquires:-

Donald: 027 606 2767

Bunty: 03 541 8626

Email: Ladley.Contracting@gmail.com

Ladley Contracting has provided agri-contracting solutions in the Tasman region for over 30 years. Our locally owned and operated family business takes pride in delivering quality work and excellent service - to help grow your business. Trust us with your contracting needs for the coming season. We specialise in:

- ✓ Servicing the Waimea Basin, Nelson, Moutere, Nelson Lakes, and Tapawera areas.
- ✓ Baleage - medium-square / round independent-wrap or combi-wrap.
- ✓ Hay - medium square, round, and conventional.
- ✓ Mower-conditioner, scatter and rake.
- ✓ Cultivation and direct drilling.
- ✓ General and bulk cartage.
- ✓ Portable sawmill, with slabber (taking orders for macrocarpa, lawson-cypress).
- ✓ Excavator (7.5t, split boom).
- ✓ WANTED - standing grass.

Contact us today for a booking or to discuss how we can help you.



Proud members of:



Southfuels Spring Grove

Check out our everyday low fuel prices, no fuel vouchers or reward cards needed.

Fuel up at Southfuels Spring Grove and help support Wakefield School.



Every time you fuel up 1 cent for every 2 litres purchased goes back to the school by way of a Southfuels Donation

24/7 Outdoor Payment Terminal

Available with all eftpos, z card, major credit cards



Ph **541 8444**

Fax 541 8445

Main Rd North

Wakefield, Nelson

springgrove@xtra.co.nz

Le bébé en ligne

Stephanie & Jenny Cooper

Boutique baby & children's wear and accessories



Join Jeanette, Stephanie and Jenny for some Relaxed Christmas Shopping

at

WAKEFIELD
BISTRO

at the Wakefield Hotel, Edward Street
Ph: 027 545 0648 or Hotel: 541 8006

Sunday November 20th 2-4pm

Villa Grove Olive Oil Tasting Wine and Cheese Tasting

Community Notices

Wakefield Craft Group

Come and join the ladies Craft Group
held on Wednesday mornings
in the Fire Brigade Supper Room
Pigeon Valley Road
9.00am - 12pm

Bring any project - sewing, knitting, crochet.
Learn to knit or crochet or just come for a look
and join us for tea, coffee and company.
Small donation

For more information phone Judy on 5418342

Do You Have Photos of Historical Interest That You Would Like to See Preserved For the Benefit of Future Generations?

Waimea South Historical Society would be happy to take care of them for you.

They would be housed in the Tasman District Library and become part of our collection.

Like the George Lawrence Collection they would eventually become digitised and available on-line as part of the Kete Website.

If you wanted to keep them but thought they would be of interest to others they could be copied and dealt with in the same way.

Just make contact with our Secretary: Jeanine Price
Phone 03-542- 3033 or e-mail jandwprice@outlook.com

WAKEFIELD BOWLING CLUB

61 Whitby Road, Wakefield

Community Bowls 2016
Thursday evenings: 6pm - 8pm
10 November - 15 December
\$5 per player
Children no charge

Come alone or with a group and teams will be organized.

Bowls & advice supplied.

Meet some new people and join in a fun evening.

Flat soled shoes please.

Music.

Sausage sizzle & refreshments available.

To enter or for more details
phone Tony on 541 8316



BETTER THAN BEFORE GROUP

Sick and tired of old habits?
Want to keep moving ahead on your values, goals and dreams?
Small group meeting to motivate ourselves, works!
Come and try it out.

Free monthly meetings, starting Wed 7 Dec at 6.15pm at William Higgins Cobb Cottage, 170 Main Road, Spring Grove

Email kathycambridge@yahoo.co.nz
[Put "group" in the subject line]

HOUSE/PET MINDING OFFERED

Do you live in the Wakefield area and will you be going on holiday in December or January?

Do you want someone to pop into your house daily and check up on security / water plants / feed and cuddle the cat / feed the budgie?

We're happy to do that in exchange for showers and use of washing machine. Call Fran on 027 224 0955.

TO RENT

One bedroom self contained cottage, rural farm location, limited cell phone but wifi for permanent rental. \$160 per week. Phone Kirsty 027 212 8021.

BACH FOR RENT

\$140 per night, sleeps five in Pakawau, can be seen on Book a Bach or Air bnb. Phone Kirsty 027 212 8021.

WANTED

Three bedroom house with garage for small family. Anywhere from Richmond to Wakefield. Rural okay. References available.

Phone Regan 021 103 1020 or 543 2570.

Wakefield School Twilight Gala
Saturday 12th November
3.00pm - 6:30pm

Wakefield School
Edward Street, Wakefield

Please note the gala will run wet or fine!

Community Notices



Are you a beginner, or have never drawn or painted before?
Come and give it a go
Join our very friendly group

Every THURSDAY of the School Term
9.30 am – 12.00 pm
Wakefield Village Hall – Supper Room
\$4 per session/cup of tea included

For more information contact:
Fiona - P: 027 767 7909
E: kahurangicottage@gmail.com
or Sonja – P: 541 8176
E: sonjal@ts.co.nz

PERMACULTURE GROUP

Our group meets informally on the 4th Wednesday of the month.

If you are interested in joining us to share knowledge or learn to start growing food organically then ring Diana and Iain on 5418950 for the venue.

POSITION AVAILABLE

Account handler with marketing experience required to execute full service local media campaign.

Suit copywriter or art director with wider agency experience.

Initial twelve month term with potential to continue if considered mutually successful.

Part time contract position, hours and rate to be negotiated.

Please email your CV to wdhealthtrust@gmail.com.

THANKS TO WAKEFIELD BUSH RESTORATION SOCIETY

I would just like to say thanks to the Wakefield Bush Restoration Society for all the great work they do.

Faulkner's Bush is constantly having areas weeded, worked on or planted up and the area along the river is just looking stunning.

From a grateful resident!

STAFF WANTED

Staff needed to pot up hop plant cuttings.
Starting approximately mid to late November
and will go for approximately 6 weeks.
Happy to work around primary school hours.

Phone 541 8607 evenings or
email b.d.ealam@xtra.co.nz

THE NELSON ARK

Foster a dog for free – while it undergoes eight weeks of training at The Nelson ARK! Food and vet care are provided.

The Nelson ARK are desperately seeking foster families in the Tasman/Nelson region.

Fostering an ARK dog is a great idea if you are looking to adopt a new member into your family because it's a bit like 'try before you buy' and you can choose to adopt the dog at the end of the programme.

Or if you are just looking to help out a dog in need, then fostering is a huge help for the ARK.

For more information, please phone the ARK office 542 3866 or www.thenelsonark.co.nz

MAINLY MUSIC

Now meeting at Wakefield St Johns Anglican Worship Centre
Monday's 10.00am. Cost \$3.00 per family.

This is a time for parents and children to enjoy music, song, dance and lots of laughs.

Any queries please phone Wendy Milson 544-5494.

WAKEFIELD JUNIOR TENNIS

Fridays

Term 4 and Term 1

Visit www.caldertennis.co.nz to register

RAW FOOD WORKSHOP

30 November 2016 7.00 - 9.00pm

Raw Party Snacks

Learn how to make eye catching, easy, healthy snacks.
Recipes provided.

170 Main Road, Spring Grove, Cobb Cottage

Bookings Sally 548 8403

WAIMEA PLUNKET PLAYGROUP

The Brightwater Community
Anglican Church, , Waimea West Road, Brightwater

Time: 9.00 – 12.00 noon

Day: Wednesday morning

Cost: FREE

COMMUNITY OUTREACH LUNCHES

The community lunches at St. John's Worship Centre will be the third Thursday of each month. All welcome.

To assist with catering, please phone Caroline, 5418491 by Monday evening preceding, if possible, if you wish to attend.

FOXHILL TENNIS COURTS

658 Wakefield-Kohatu Highway
(at rear of Rutherford Memorial Hall)

FREE PUBLIC USE.

Re-painted lines, nets up ready to go, for twilight practices and summer fitness.
Managed by Rutherford Memorial Hall (Foxhill) Assn Inc. for TDC
Erica Short Secretary/Treasurer 541 8882

Community Diary & Classifieds

PART TIME WORK WANTED

Sept

All the jobs that farmers don't have time to do, such as firewood, lawns etc.
Phone John 541 9233 or 027 469 0964

WANTED

Oct

House sitter wanted for house and two dogs, over Christmas/New Year period 23/12 – 6/1.
Phone Bob 029 777 0052

RURAL PROPERTY WANTED TO RENT

Oct

Due to our current rental being sold, we find ourselves looking for a country house with some land to rent/lease long term, with a view to purchase in the area.

We have a small number of sheep, and wish to run a few calves, chooks and have our own vege garden.

Being a mature, professional couple and son, we are careful, responsible, quiet folk.

We are ex-sheep/cattle farmers. We have NO dogs.

We would be very happy to help out with farm chores if need be.

If you have or know of a property that needs to be looked after, call us on:

03 543 3600 Anne and Grant.

All areas considered.

FOR SALE

Oct

Farm timber new 3.2 treated pine. 100x50 / 150x50 / 200x50

To view phone Allan 027 319 7427 or John 541 8998

LAWNMOWER SERVICING

Oct

Oil change, blade sharpen, spark plug replacement, from \$60.

Wakefield Auto Services
67 Whitby Road, Wakefield
Ph 541 8121

FOR FREE

Nov

Boxes, bubble-wrap and packing paper. Handy for moving house!
Phone: Marten 5419350

FREE

Nov

Hen & Baby chicks to give away to a good home.

Phone Rachel 541 8763 or 027 286 7927

FOR SALE

Nov

Sheep Manure \$8.00 per 25kg bag
Can deliver ph: 541 8488

FOR SALE

Nov

11 hand, 4 year old broken coloured pony. Well handled but not ridden.

Phone Lorna 541 8979.

FOR SALE

Nov

Agapanthus - cheap mature plants. Clearing out section.

Phone 03 265 5066

STORAGE BAYS AVAILABLE

Nov

Great for a Motorhome or Boat, Wakefield area.

Contact: 541 9726 or 0210 833 0261

MONTHLY COMMUNITY CALENDAR

NOVEMBER 2016

Tues 1	9.45 am	Livewell Staywell, HQ Brightwater
	10.30 am	Wakefield Community Library open
Wed 2	9.00 am	Waimea Plunket Playgroup, B/water Anglican Church
	9.00 am	Wakefield Craft Group, Fire Brigade Supper Room
Thur 3	9.30 am	Wakefield Art Group, Wakefield Village Hall
Fri 4	2.30 pm	Wakefield Community Library open
Sat 5	9.30 am	Wakefield Community Toy Library open
Sun 6	10.00 am	Wakefield School & Community Pool Opening
	10.00 am	Destination Wakefield, various locations
Mon 7	10.00 am	Mainly Music, St Johns Worship Centre
Tues 8	10.30 am	Wakefield Community Library open
	7.30 pm	Wkfld Comm Council Meeting, St Johns Worship Centre
Wed 9	9.00 am	Waimea Plunket Playgroup, B/water Anglican Church
	9.00 am	Wakefield Craft Group, Fire Brigade Supper Room
Thur 10	9.30 am	Wakefield Art Group, Wakefield Village Hall
	6.00 pm	Community Bowls, Wakefield Bowling Club
Fri 11	2.30 pm	Wakefield Community Library open
Sat 12	8.00 am	Wakefield Market Day, Village Green
	9.30 am	Wakefield Area Quilters "Sew" Day, St Johns Church
	3.00 pm	Wakefield School Gala
Sun 13		On Steam and Logging Weekend, Higgins Heritage Park
Mon 14	10.00 am	Mainly Music, St Johns Worship Centre
Tues 15	10.30 am	Livewell Staywell, Eyebright
	10.30 am	Wakefield Community Library open
Wed 16	9.00 am	Waimea Plunket Playgroup, B/water Anglican Church
	9.00 am	Wakefield Craft Group, Fire Brigade Supper Room
Thur 17	9.30 am	Wakefield Art Group, Wakefield Village Hall
	6.00 pm	Community Bowls, Wakefield Bowling Club
Fri 18	2.30 pm	Wakefield Community Library open
Sat 19	9.30 am	Wakefield Community Toy Library open
Mon 21	10.00 am	Mainly Music, St Johns Worship Centre
Tues 22	10.30 am	Wakefield Community Library open
Wed 23	9.00 am	Waimea Plunket Playgroup, B/water Anglican Church
	9.00 am	Wakefield Craft Group, Fire Brigade Supper Room
	7.30 pm	Wakefield Toy Library AGM, Wakefield Toy Library
Thur 24	9.30 am	Wakefield Art Group, Wakefield Village Hall
	6.00 pm	Community Bowls, Wakefield Bowling Club
Fri 25	2.30 pm	Wakefield Community Library open
Sat 26	9.30 am	Wakefield Community Toy Library open
Mon 28	10.00 am	Mainly Music, St Johns Worship Centre
Tues 29	10.30 am	Wakefield Community Library open
Wed 30	9.00 am	Waimea Plunket Playgroup, B/water Anglican Church
	9.00 am	Wakefield Craft Group, Fire Brigade Supper Room

DECEMBER 2016

Thur 1	9.30 am	Wakefield Art Group, Wakefield Village Hall
	6.00 pm	Community Bowls, Wakefield Bowling Club
Fri 2	2.30 pm	Wakefield Community Library open
Sat 3	9.30 am	Wakefield Community Toy Library open
Sun 4	10.00 am	Destination Wakefield, various locations
Mon 5	10.00 am	Mainly Music, St Johns Worship Centre
Tues 6	10.30 am	Wakefield Community Library open
Wed 7	9.00 am	Waimea Plunket Playgroup, B/water Anglican Church
	9.00 am	Wakefield Craft Group, Fire Brigade Supper Room



WAKEFIELD MARKET DAY

Saturday 12th November - Summer hours 8am to 12pm

We welcome you to the village, such a lovely time to share those extra things bulging out of the cupboard before the new intake of Xmas goodies.

Remember the locally grown plants, get them in before you get too busy.

See the Scouts BBQ and help them get to their Jamboree.

If you are wanting a site, ring Jean 541 8154

Community Directory

Citizens Advice Bureau
548 2117 - 0800 367 222

Rutherford Memorial Hall
658 Wakefield-Kohatu Highway, Foxhill
Bookings and enquiries:
Erica Short 541 8882 or
rutherfordmemorial.hall@gmail.com

Pigeon Valley Steam Museum
Alan Palmer 027 319 7427

Rural Ramblers
Carolyn Mason 541 9200

Spring Grove Drill Hall
C. Pike 542 3904

Totaradale Golf Club
Jacquie 541 8030

Wakefield Anglican Church – St Johns
Meet Sun 9.00am; 10.30am
Rev. Allan Wasley 541 8883

Wakefield Community Library
Wendy Gibbs 541 8490
Pam Dick 541 8392
Hours - Tues 10.30 -11.30am
Friday - 2.30 - 4pm
Excluding Public Holidays

Wakefield Football Club
Chris Olaman 027 541 9029
Ian Radcliffe 021 0244 6459

Wakefield Medical Centre
541 8911

Wakefield Pharmacy
5418418
doug@wakefieldpharmacy.co.nz

Wakefield Playcentre
Contact: 541 8866

Wakefield School
Edward Street 541 8332

Wakefield Scout Group
wsg4kids@gmail.com

Wakefield Toy Library
Saturday 9.30-11.30am
Chris Gaul 541 8148

Wakefield Volunteer Fire Brigade
DCFO Fritz Buckendahl 027 224 4162

Justice of the Peace
Katie Greer
896 Wakefield/Kohatu Highway
Ph 021 547 756

Country Players (Drama)
Jen Amosa 541 8139
enquiries@countryplayers.org.nz
www.countryplayers.wordpress.com

Nelson Vintage Engine & Machinery Club
Allan 027 319 7427

Pinegrove Kindergarten
03 542 3447

Rural Women
Dawn Batchelor 542 3628

St Joseph's Catholic Church
Sun 8am, Thurs 9.30am
Parish Priest Seth Pijfers 544 8987

Waimea Sheepdog Trial Club
Colin Gibbs 541 8435
gibbs@ts.co.nz

Wakefield Book Group
Mahala White - 541 8933 or
Chrissy Harris - 541 9596

Wakefield Bush Restoration Society
Doug South 541 8980

Wakefield Craft Fair
Leanne and Glen Turner
541 8306

Wakefield Plunket
Donna Todd 541 8583

**Wakefield School/ Community
Swimming Pool**
Phill Platt 027 231 7610

Target Shooting Wakefield
targetshootingwakefield@gmail.com
Contact: Dot Ashton
541 8989 or 027 543 0529

Wakefield Rest Home Ltd
Cath Smart - Manager
Rita O'Neil - Clinical Manager
541 8995

Wanderers Sports Club
542 3344

Wakefield Physiotherapy
Kate West 03 541 8911

Window on Wakefield
Advertising - 541 9641
Genie & Lindsay Bradley

Focus Wakefield
focuswakefield@gmail.com

Just Gymnastics
Linda Mace 546 6013

NZ Postcard Society Inc.
Doug South 541 8980

Richmond Lions - Wakefield Rep
Ivan Burrowes 541 9689

Spring Grove Church of Christ
Meet Sundays 10am
541 8011

Top of the South Rural Support Trust
gibbs@ts.co.nz
Colin Gibbs 541 8435

Waimea South Historical Society
Arnold Clark 544 7834

Wakefield Bowling Club
Margaret Eames 541 8316

Wakefield/Brightwater Book Club
Pauline Coy 542 3994
paulinebc@gmail.com

Wakefield Community Council
Sonia Emerson 541 9005

Wakefield Indoor Bowls Club
Ren Olykan 541 8275

Wakefield Preschool
Contact: 541 8086

Wakefield School PTA
ptawakefield@gmail.com

Wakefield Tennis Club
Ngaire Calder 541 9419

Wakefield Village Hall
Rob Merilees 541 8598

St. John's Worship Centre
Nigel Massey 541 8857

Waimea Plains Junior Football Club
Debbie and Grant de Joux
541 8307

Window on Wakefield
Articles & Content - 541 9005
Sonia Emerson

CIVIL DEFENCE - WAKEFIELD AREA COMMUNITY RESPONSE

In the event of an emergency, your first task is to ensure the safety of your own home, family and neighbours. Once you have attended to this, if you have **specialised skills/ equipment**, and/or feel you can assist others; or require assistance yourself, please make your way to the Welfare Centre which will be at the St Johns Worship Centre in Edward Street [unless notified otherwise].

Please note that the existence of a Welfare Centre does not absolve each individual from their **responsibility to be personally prepared**.

You should ensure that you have your own **survival kit** in place, and that you are able to be **fully self sufficient for at least three days**.

In the event of an emergency, for urgent public messages, tune in to:
More FM 94.1, Classic Hits 89.8, Fresh FM 95.4





I've sent high commissions **PACKING** with our **UNBEATABLE FLAT FEE**



WAKEFIELD

11 Eighty Eight Valley \$395,000+

NEW LISTING



4 bed, 3 bathrooms, single garage and carport.

WAKEFIELD

55 Eighty Eight Valley \$499,000+

NEW LISTING



Beautifully renovated 4 bed, 2 bath home with lovely outdoor areas.

WAKEFIELD

61 Barton Lane \$519,000+

NEW LISTING



Come and renovate this 1960s beauty on 6000m2.

WAKEFIELD

15 Treeton Place \$395,000+

NEW LISTING



3 beds, extra room plus garage downstairs, lovely views.

RICHMOND

36 Taranaki Place



WAKEFIELD

26 Genia Drive



WAKEFIELD

4 Genia Drive



STOKE

1/32 Andrews St



PROUD SPONSOR OF

Totaradale Golf Club Inc / Wakefield Football Club
Wakefield Bowling Club NZ / Wakefield School Music Program



FREE qualified advice about your home's value is only a phone call away
Wendy Pearson M 021 567 722 P 541 9667 E wendy.pearson@tallpoppy.co.nz



Bulsara Ltd REAA Licensed MREINZ

Licensed Real Estate Salesperson (REAA 2008)