

WINDOW ON WAKEFIELD
ONLINE EDITION BROUGHT TO YOU
BY



PHONE 03 541 9641



WINDOW ON WAKEFIELD GETS AN UPGRADE

For those of you who have lived here in Wakefield for some time, you will know that we have been very fortunate to have our own community newspaper for many years. The very first newspaper was produced on 3rd June 1983. For 13 1/2 years or 133 issues, "Village News" was produced by a committee, in association with the Residents' and Ratepayers Association of the time. For many of those years, Donald Hutcheson was the editor, and was supported by a team of collators, typesetters, deliverers and contributors. In December 1996, Don and his team stepped down.



The mantle was then taken up by a new group with Arnold Clark as editor, and Dry Crust Communications undertaking the typesetting, layout and advertising. Hence, the 134th issue of "The Village News" was issued in February 1997. Over the next few years, the scope was expanded to include Brightwater, Wakefield, Tapawera, St Arnaud and surrounding districts. The publication was also renamed "The Village Times" and distribution was expanded to almost 10,000 homes with Mapua, Richmond, Upper Moutere and Murchison being combined in the mix. These changes were due mainly to financial and commercial pressures and were not really where the community wanted to see the publication going. Many felt it had lost the local touch. When the Times folded, Arnold Clark reintroduced "The Village



News" in 2000 on a much smaller, personable scale with the focus again on Wakefield. Arnold remained in his role as editor until September 2003 when he felt it was time to hand over the reins.

In November 2003 Rachel Stokes stepped up and The Village News continued on providing a fantastic communication tool for our community until August 2011. We would like to thank Rachel for the huge effort that she put in as Editor of the Village News. The work that she did in sourcing material, researching stories, and writing articles was a big job and the community thoroughly enjoyed reading the articles that she brought to us.

As a temporary measure, the Wakefield Community Council decided to follow Brightwater's footsteps and run a 2-3 page spread in the Waimea Weekly each month, Window on Wakefield, dedicated to our village. Whilst this has filled a gap, and we are extremely thankful to the Waimea Weekly for all of their assistance with this, it wasn't quite the same as our own newspaper.

I think its fair to say that as a whole, the community felt the loss of the long standing source of information, communication and connectivity that the Village News, in its various forms, had given us over the years. We certainly received that feedback at the public meeting that the Focus Wakefield group held on 23rd August.

Therefore, when Genie and Lindsay from Wakefield Print, approached us with their offer to help launch a new community newspaper, how could we possibly refuse? ... and thus Window on Wakefield is reborn, and we have a community newspaper again.

Window on Wakefield is produced and published by Focus Wakefield, a subcommittee of the Wakefield Community Council, in conjunction with Wakefield Print. We are doing this in response to the feedback at the public meeting and from talking with many locals about what they want to see for their community. We hope that this newspaper will contribute to us engaging and connecting as a community. We would like to see better communication between groups and the community working together with joint focus and resources where possible.

Continued on Page 3

REDWOOD BUILDING Services Ltd
The pathway to your new home

Deal Directly with the Builder

LICENSED BUILDING PRACTITIONER
BUILDING CONFIDENCE

- Affordable Home Building, Additions and Renovation
- Flexible and Free Plan Design Service (Conditions Apply)
- Trade Certificate Qualified
- Personal Service from a Family Owned Local Business

Phone Rowan Reader 021 154 6040

WINDOW ON WAKEFIELD

How it works...

Window on Wakefield is produced and published by Focus Wakefield, a subcommittee of the Wakefield Community Council. All businesses advertising in this publication incurs a cost for the advertising space allocated, depending on the size and location of the advertisement. The funds raised from this advertising are used to cover the costs of printing Window on Wakefield. No parties are paid for the time involved with editing, coordinating and publishing this paper. It is the intention that if surplus funds are raised from advertising, that these will be held in a separate bank account to be used for other community projects. The bank reconciliations and financial reports related to this account will be made available to any person who wishes to view them.

Content...

Window on Wakefield is a community newspaper, and as such, we look forward to having articles and content contributed by our community. If you wish to submit a one off article, or suggest some regular content, please make contact with Sonia on 541 9005 or email windowonwakefield@gmail.com and read the Terms and Conditions below.

We try to ensure information published is truthful and accurate, but do not check the facts of the articles and therefore cannot attest to their validity. While all reasonable care is exercised, we do not accept liability for any loss whatsoever incurred through our errors, acts or omissions in relation to the content of an article, or for any consequences of readers' relying on the information published. Opinions expressed by contributors do not necessarily represent the views of the Focus Wakefield group, nor are they necessarily endorsed by the Editor or Publisher.

Advertising...

If you wish to advertise in Window on Wakefield, please make contact with Genie or Lindsay on 541 9641 or email enquiries@wakefieldprint.co.nz and read the Terms and Conditions that will be provided on the rate card.

TERMS AND CONDITIONS REGARDING PUBLISHING OF CONTENT

- All articles and other content submitted for publishing must disclose the author's name or where the article/content is contributed by a community group, then that community group's name.
- All images should be provided to us in a high quality PDF format. We take no responsibility for the quality of reproduction for images that are not supplied to us in this format.
- If you wish to make changes to an article or content already submitted, please ensure these are communicated to us before the relevant deadline date.
- When you submit an article or other content for publishing you:
 - agree that the submitted material and/or images can be reproduced by the Editor or Publisher at any time without your prior approval
 - agree that all photographs submitted for publishing are provided free of charge, and the approval to print has been obtained from any persons shown in the photo - this is the responsibility of the person submitting the photo
 - acknowledge that all material is held by us at your risk and is not insured by us. Material will only be returned on request and may otherwise be destroyed by us
 - warrant and undertake that no statement, image, representation or information contained in your supplied article or content:
 - is or is likely to be misleading or deceptive;
 - is at all defamatory, in breach of copyright, trademark or other intellectual or industrial property right;
 - is otherwise in breach of the Copyright Act 1994, Defamation Act 1992, or any provision of any Statute, Regulation or rule of law.
- We reserve the right to decline the publication of any article or any content what soever on any grounds that we in our absolute discretion see fit.



Jill O'Brien
R D 1 Wakefield
Rural Mail Contractor
FOR ALL YOUR MAIL NEEDS
Stamps, Parcels, Freight
Phone 541 8963
Mobile 027 324 2126

DID YOUR BUSINESS MISS OUT THIS TIME



DON'T DESPAIR
WE HAVE SAVED
A SPOT FOR THE NEXT
PUBLICATION
JUST FOR YOUR BUSINESS

Give us a call
541 9641
or
Email
info@wakefieldprint.co.nz

NEXT EDITION

Due out the first full week of each month

All Advertising to be submitted by the 20th of the Month prior
All Content to be submitted by the 23rd of the Month prior
For Advertising please contact Wakefield Print Ltd 541 9641
For Content please contact All Accounts Matter Ltd 541 9005



Wakefield Community Council Report

The Wakefield Community Council, as always, received an update on the Focus Wakefield projects which are currently underway. For an update on each of these projects, please see the Focus Wakefield updates in this newsletter.

The WCC also received a letter regarding issues of safety on the Pigeon Valley South Branch Road. The school bus uses this road and it is felt that the narrowness of the road and speed are dangers to children in the area getting on and off the bus. The TDC has done a speed warrant on the road and say it doesn't warrant a reduction in the speed limit. Other ways to improve safety are being investigated. The cycleway is currently being formed past the end of Higgins Road, through the unformed legal road which passes through private land. Landowners have been informed of the issues.

The next meeting of the Wakefield Community Council will be held in the lounge, St. John's Centre, on Tuesday 13th November at 7.30pm. All welcome to attend.

Caroline Gibbs
Deputy Chair

Womans Biz October Meeting

Thanks to all who attended our September meeting at Rachel Costellos fantastic venue and also to the many of you who offered your apologies for not being able to make it.

It was great to get an update from Sonia on the new Focus Wakefield group - they have some wonderful ideas and goals in respect to the Wakefield area and the information generated a lot of discussion.

Sandy and Sandra also took the time to profile to us on "Going to Market". These ladies have attended many markets throughout the area and gave us an insight on what to expect and also valuable tips on what to do and take to market. Sandra Rogan also runs a register on which markets are up and coming in the area and for a minimal fee can provide anyone with this information. These ladies are also responsible for organising and running the Tapawera Christmas market which is at the Hidden Cafe (Motueka Valley Highway) prior to Christmas. It was held for the first time last year and proved very popular and was well attended from people throughout the region. If you are interested in having a stall this year then please contact Sandy on stormrogan@yahoo.co.uk.

Next months meeting, on Friday 30th November, is at Bushwalk B&B, 15 Hunt Terrace, Wakefield. Hope to see many of you there again this month.

Any queries please contact
Justyne on hairfairywholesale@gmail.com or 522 4488 or
Sonia on allaccountsmatter@gmail.com or 541 9005

WAKEFIELD VILLA

Tearooms & Gift Shop

WE SERVE DAILY
FINE COFFEE, TEA'S
DELICIOUS CAKES
& LUNCHES



14 WHITBY WAY, WAKEFIELD

TELEPHONE:
541 9168
7 DAYS A WEEK

Emma Marshall
Solicitor

For all your legal needs.
I can meet you locally by arrangement.

smythes LAWYERS

Emma.Marshall@smytheslaw.co.nz T: 03 546 8750

WELLS RURAL POST

Contact Matt & Angie Wells for all your RD 2 Wakefield postal needs.

Including prepaid envelopes, Stamps, Courier items and local freight from Wakefield, Dovedale and Tapawera. Prescriptions from Wakefield.
Phone 5418177

WINDOW ON WAKEFIELD GETS AN UPGRADE (Continued)

Local business will pay to advertise in or sponsor articles in the Window on Wakefield. The rate card gives two price options, a six month commitment or a casual booking. These advertising funds will be used to pay for the printing of around 2000 copies, enabling community content to be printed free of charge. There will be regular spots for community groups and regular contributors, and space for changing content from one off contributions. No parties will be reimbursed for the time involved with editing, coordinating and publishing this paper. It is the intention that if surplus funds are raised from advertising, that these will be held in a separate bank account to be used for future community projects. The bank reconciliations and financial reports related to this account will be made available to any person who wishes to view them. Initially, the publication will be delivered in hard copy to all mail and post boxes in the Village and on the rural runs in Wakefield and surrounding area. We will be looking to provide an electronic version in the near future.

The Window on Wakefield is a community newspaper, and as such, we look forward to having articles and content contributed by our community. Community involvement is essential as our committee cannot hope to write all of the content. If you wish to submit a one off article, suggest some regular content, or talk to us further, our contact details are on Page 2. We hope that together we can continue to deliver a community newspaper for Wakefield for many years to come. Once again, a huge thank you to everyone who has been involved in the publication, collation and delivery of our community newspaper [of varying names] since 1983. Your efforts are greatly appreciated and we are proud to follow in your footsteps.

Written by Sonia Emerson
Wakefield Community Council

The Wakefield School & Community Swimming Pool

The Wakefield School & Community Swimming Pool opened this year on the 4th November and we held an open day on November 4 from 10.30am until 3pm. We had a huge inflatable for the kids to play on and had a sausage sizzle. Keys were available to purchase at the open day and also through Wakefield School after this date. Our season usually runs from November to end of March depending on the weather. By purchasing a key for the season (\$95 for the family if paid before Dec 1st) you will be able to enjoy a heated and clean pool not far from your door. As always the pool is available for use outside of school hours. We require the assistance of volunteers to help maintain the pool (and therefore keep it open to the community). You can volunteer a day/time each week to assist with checking Chlorine levels. The excellent pool facilities are maintained by the Wakefield School and Community members and to keep the pool open to the community the Chlorine and PH levels must be checked four times a day. It's quick to do and not difficult and you will be given training. You can help as little or as much as you choose. Your help is especially needed during the holidays and weekends when the school is closed. If you are able to volunteer your time please contact

Phill Platt on 027 231 7610
Phillip.Platt@dol.govt.nz

Remember the pool is available to all the community not just wakefield school pupils and families.

A Website for Wakefield

The team at 'Focus Wakefield' have established, from community feedback, there is a need for a user friendly web site for the village of Wakefield. The site name, or 'domain name' has been reserved and will be donated to the village thanks to Stephen Smith of 'Slightly Different'. Stephen has secured, for our use, www.wakefield.org.nz and has also kindly agreed to build the web site. We also have the services of Amanda Ledger, who offered to design the site. Both are residents of the village and are offering their considerable skills for the benefits of all Wakefield residents, thanks guys.

The challenge now is to plan the site and its content. Sounds easy, however there will be a considerable amount of work. The objective is to design a site which services the needs of our community, while offering informative content to anybody wanting to 'research' Wakefield prior to a visit. There is also a great opportunity for local businesses, clubs, community groups, teams etc to showcase themselves. So what do we need? What would you as a resident of Wakefield want on the website? Are you a member of a club, team, community group or business owner who may be interested in a page on the site?

Let us know by emailing Neil, or Sonia at focuswakefield@gmail.com, or ring Diane on 5419725.

We will also need 'information gatherers', and photographers to showcase our village. If you would like to be involved in this exciting opportunity to provide a lasting and evolving facility for the benefit of all, go on get in touch....by email if you can or phone. The limits of this project are literally our imaginations.

EXCITING LOCAL LISTINGS



95 Totara View Road, Wakefield
3 bedrooms, 2 bathrooms, 5627m2 section with beautiful gardens & flowing lawns, double garage + off street parking



1 Waimea West Road, Brightwater
5 bedrooms including master with en-suite, 1027m2 fully fenced section, 9 metre garage all in an excellent location

Call me to view these exciting properties or for free advice on marketing your property including a no obligation appraisal.

Grant Chaney 541 9097 24 hrs

Your Local Real Estate Expert



Ray White

Baldwin & Brown (Richmond) Ltd Licensed (REAA)

Wakefield Beautification Project

The Focus Wakefield team for the Beautification Project have been working behind the scenes collating your ideas and visions for Wakefield that were put forward on 23rd August at our Community meeting. What a fantastic evening that was - the response was huge and there were some very clear trends and ideas expressed in the feedback we received!

Whilst keenly noting all of the ideas you gave us, it was apparent early on that serious prioritising of the many suggestions for beautification of our Village was necessary. Although we hope that this project will continue to develop and grow for years to come, we feel that, in the short term, it is essential to focus on a selection of visible and achievable projects.

The imminent arrival of the Great Taste Cycleway to Wakefield (expected now for February / March 2013) appears to have influenced what many people felt should be a priority in the short term.



This is only an image to give you an idea not necessarily what the finished product will look like

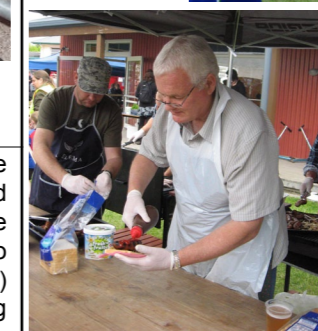
We have taken this on board and have noted the cycleway route which will bring visitors into the Village. As a result we have decided to focus on "beautifying" from the top of Edward Street near the Anglican Church down to the Village Centre, as well as adding to and improving urban infrastructure (rubbish bins, cycle stands etc) particularly in the Village Green area. We have spent time mapping various "sub-projects" on that route and will be announcing these shortly. We are looking forward to getting the community involved to assist in implementation of these great plans.



Wakefield School Gala a huge success.

The Wakefield School PTA along with the staff and children would like to extend a heart-felt thank you to the community for their support of the Wakefield School Twilight Gala. What a fantastic occasion it turned out to be; from the wonderful entertainment, fun children's activities and displays, the raffle & silent auction, stalls full of great bargains and the yummy food much of which was caught locally and processed by Lindsay and his team at Wakefield Butchery.

Thank you to everyone who turned out to support Wakefield School and to contribute to the warm, relaxed, fun filled atmosphere that helped turn the gala into a fantastic community event. Due to all this wonderful generosity and support we were able to raise \$25,500.00 for Wakefield School. An incredible result! This money will be used to purchase new desk top computers for the classrooms and other ICT equipment which provide our children with quality, up to date educational resources to support the classroom programmes and further their learning.



“Our Gala”

I went to the Wakefield School Gala. I went on the horses. It felt hairy! It was fun. I got my nails painted black with glitter. They were as sparkly as the stars at night.

By Emily Walker

It was a cloudy, dull evening... then the gala started! The bands started playing at 4pm. The hot chips were on, the bouncy castle was being blown up. Soon, Wakefield School was alive with the sound of chattering. There were hundreds of exciting toys, masses of gobsmacking chips, hot dogs and nachos. The guns were blasting in the shooting range. Smash! Crack! The sounds of plates being smashed. Two extra cute puppies were in the petting zoo, screams were coming from the haunted house. The coke, milkshakes and lollies, were disappearing at alarming rates.

By Ronan Thompson

On Saturday there was a gala. I went plate smashing which was so amazing. There was shooting that was really fun. I went on the bouncy castle. You do lots of races on the bouncy castle. It is so amazing there. I have been to every single gala. There was a fire brigade display where you could watch them put out fire. Come to the next gala.

By Sam Smith

This year's gala was the best ever! My favourite was the mystery jars. I got 5 of them and they were jam-packed with lollies. I ate them all in a night. Then I went to plate smashing. I smashed at least 8 plates. Then we went to the shooting gallery. I challenged my friend Eamon. He had way more experience. I missed all of the shots so Eamon won. Then at the end of the gala everything left-over from the toy sale was FREE!

By Jared Rogers

I went to the school gala and I got a jelly and ice cream and sprinkles it was yummy I ate it and we went to the plate smashing.

By Madison Taylor

On Saturday Wakefield School had a gala. I had one gingerbread man. Next Shaylee came and said to me “come and have a go on the bouncy castle with me”, so I did. Next Shaylee and I had a tractor ride. Then Shaylee and I shared a fire coat. Next Shaylee's Dad got me a fire mans bottle. I liked it.

By Isabella Doblanovic



On Saturday I went to the Wakefield School Gala. Ruben was going to play that gun thing. After that I went on a tractor and then I went on a horse ride. Then I had a big ice cream. After that I had a sausage in bread from Mr Ross. It was yummy.

By Mya Ketel

On Saturday 27th October I went to the gala. First I got a milkshake. Second I went on the tractor ride. Third I went on the fire truck. 4th I had dinner. 5th I went to the petting zoo. 6th I went to the toys. 7th I went to the horse ride. 8th I went to the shooting. 9th I got a can of coca cola. It was fun.

By Ra Royal

On Saturday I went to the Wakefield School Gala. I did the bungee slide. That was such fun. I really wanted to do that again. I went to the haunted house. You have to try to get through it.

By Rhys Grant

On Saturday I went to the gala and I went in the haunted house. It was not scary but they tried to scare me and they didn't scare me. I got a drink bottle too. It was fun at the gala.

By Kayne Grant

On Saturday I went to the school gala. I got some books and Isabella and I went on the bouncy castle and Isabella and I went on a tractor ride and I did fishing and I got a chocolate.

By Shaylee Manson

On Saturday there was a gala at Wakefield School. First we got a milkshake. Next we went on the tractor ride. Then we went on a fire truck. Then we went to the toys. At the toys I got a bear. I named it Zac. I got a dragon, I named it dragoon. I got an ultimate humungosaur and a batman action figure. I thought it was fun.

By Jett Royal

On Saturday I went to the Wakefield School Gala. I went on the tractor ride toru times. Then I went on the bouncy castle. Then I was going to go in the haunted house but someone had broken it. I felt happy.

By Cameron McLean



Wakefield School PTA would like to acknowledge all the individuals and businesses for their generous support of the Wakefield School Twilight Gala:

Waste Management, Wendy Pearson – Heyward Realty, Bluebridge Ferry, Inter-islander, Totaradale Golf Club, Programmed Property Maintenance, Wakefield Butchery, Smythes Lawyers, Chateau Rhubarbe, Three Rooms Restaurant, The Apple Shed, Shanty Town, Kelvin's Cycles, NZ King Salmon, Petite Fleur, Lone Star, Harte Distributors – Meadow Fresh Milk, Wakefield Quarry, Air New Zealand Mystery Breaks, Nelson Travel Brokers, Kahurangi Estate, Footie Signs, Tasman Bay Food Group, Freeman Roofing, Kudos Food Design, BNZ, Fly Buy, National Bank, Wakefield Storage, Robbie Conning Growers, Red Shed Veges, Westpac Richmond, Cardell's Hair Salon, Rose Shepard, Fine Arts Framing, Kate Yolland, Meg Latham, Royce McGlashen, Bay Landscapes, Deans Nursery, Franks Trees, Hill Top Natives, Place for Plants, Thirkettle Nurseries, Waimea Nurseries, Hoddy's Orchard, ASB, Villa Grove Olive Oil, Hire Quip, New World, Mike Granger, Amanda Ledger, Pure Essential Spa & Beauty Therapy, Countdown Stoke, New World Stoke, Pak'n'Save, Pattison Swim School, Wakefield Print, State Cinemas Nelson, Abel Tasman Wilson Experiences, Richmond Specsavers, Richmond Glass, Packaging House, World of Wearable Art, Jacks Tyres, ASB Aquatic Centre, Seifried's Winery, Richmond Auto Electrics, Morley's Motorcycles, Baku, Richmond Office Products Depot, Tahuna Beach Holiday Park, Firth Concrete, Transit-mix concrete, Eaton Hydraulics, Bell Computers, Anni Eniko Fekete Beautician, Blow Hairdressing, Wakefield Pharmacy, Wakefield Medical Centre, Wakefield Auto Services, Sumaway Holdings, Mapua Ferry, Pomeroy's Coffee, Wakefield Villa Tearooms & Giftshop, Graphic / Usana, Thermal Imaging, Perfect Cat Retreat, Mountain Valley Honey, Arrow International Ltd, Craig Potton Publishing, Tohu Wines, Fresh Choice Richmond, Holistic Health Training, Murchison Transport, Elgas, Wakefield 4 Square, Talley's Fisheries, Sharon Marsden – Sew Goods, Wakefield Bowling Club, Wakefield Fire Brigade.

And a special thank you to everyone who assisted on a stall - staff, parents and community members.

A HUGE THANK YOU FOR YOUR SUPPORT \$25,500 AN INCREDIBLE RESULT FROM WAKEFIELD SCHOOL!



Sheila Kennard cert BRT

- **Bioresonance Therapy**
- **Australian Bush Flower Essences**
- **PSYCH-K**

Bioresonance may help in the following ways:-

- **Boost The Immune System**
- **Assist With Hormonal Balance**
- **Boost Energy Levels**
- **Help With Sensitivity To Allergens**
- **Help Control Nicotine Cravings**
- **Quit Smoking**
- **Help Control Food Cravings**
- **Weight Loss**
- **Boost Metabolism**



Special Introductory Offer:
Come and experience Bioresonance Therapy and find out how it may help you
30 mins for \$30
I look forward to meeting you.

For more information contact
Sheila Kennard
115 Eighty Eight Valley Road
Wakefield, Nelson
Tel: 03 541 8860 or 0273644717
Email: sheila@yworrie.com

FULL TIME POSITION – WAKEFIELD SUPERMARKET

We have an exciting opportunity for you to join our team as a Checkout Salesperson. The successful applicant will be able to demonstrate the following attributes.


- Exceptional customer service and communication skills.
- High standard of personal presentation.
- Organisation skills and good time management
- Have an eye for attention to detail.
- An outgoing, fun personality.
- Demonstrate Initiative, punctuality and reliability.
- Drive to achieve results.
- Be independent, motivated and honest.
- Flexibility with working hours, including days, evenings and weekends.




Starting days and hours of work will typically be during the day and may include evenings, Saturday and/or Sunday shifts.

Applicants for this role will need to be physically fit as some heavy lifting is required, have the ability to work as part of a team and individually. Be honest, reliable, motivated and enthusiastic. Significant experience in the food retail industry is an advantage, however your focus on customers and the commitment to high standards will be key factors attributed to the successful applicant. This is an excellent opportunity to join our busy and successful supermarket, apply in writing or by e-mail, giving details of experience, enclosing copies of references to:

Owner Operator
Wakefield Supermarket
22 Edward Street, Wakefield 7025.
wakefield@foursquare-si.co.nz
Applications close Sunday 11th November 2012



WAKEFIELD PHYSIO
restoring mobility

Kate West BPhy
Mary Caldwell
Credentialed McKenzie Therapist

Back, Neck & Shoulder Pain
Sprains and Strains

ACC TREATMENTS ★ ACCREDITED PRACTICE

WAKEFIELD HEALTH CENTRE
Edward Street, Wakefield Phone 541 8911

**DO YOU HAVE UNTIDY LAWNS?
THEN MOW THEM WITH**



Normally \$3499
On Special
\$2999



Briggs & Stratton 13.5hp
Electric Start
Hydrodrive System
Electromagnetic Blade Engage
Tow Hitch
Side Discharge




Wakefield Auto Services Ltd
67 Whitby Road, Wakefield
Ph: (03) 541 8121




Health & Wellbeing

Heart to Heart

Feelings are personal power
Understanding the power of our feelings gives us personal power that cannot be gained through the mind and intellect. Our feelings come from our emotional body which is of course connected in a dynamic way to our other three bodies, our mind, body and soul.

In every moment our feelings bring us messages about what we are doing, who we are with and how much the situation is in alignment with our soul self. Looking at this simply we can say that when we feel joy we are in a situation that is right for us. When we feel a discomfort the situation is less than good for us. We don't necessarily need to change the situation but we can acknowledge it for what it is. Feelings then are intuitive messages that tell us how much we are in alignment with ourself in the present moment.

Feelings can also arise when we have an interaction that reminds us of something that happened in the past that we have not yet fully integrated; perhaps it was too painful at the time. Acknowledging the feeling will help us remember the original event giving us an opportunity to accept that it has been a part of our life but it is now time to let it go. This brings about healing, a letting go of the held-in energy and an opening of space for new things to come into our life.

Feelings are the language of the soul and they connect us with our heart and love. Here we experience life differently; life slows down and we connect with ourself and make heart connections with others. Somehow, life has more dimensions to it and is more colourful and meaningful. Just imagine if we could live in this space all the time. Oh that's right, we can!

For more information about emotional and spiritual wellbeing see Karen's website www.karenwason.com

Written by Karen Wason



Wakefield Health Centre

"Congratulations" to the Team at "Window on Wakefield" for the start of a new newsletter in Wakefield from the Wakefield Health Centre staff. "Welcome" to the many new residents in the Village of Wakefield and surrounding districts.

We are accepting new enrolments so please consider joining our friendly General Practice close to your home. Either phone for an enrolment form to be sent to you and your family, or call into the Health Centre and complete the form. We need to sight and copy either your passport or birth certificate. (Phone 541 8911, 12 Edward St, Wakefield)

Wakefield & Districts Community Health Centre was purpose built in 1990 with the help of community fundraising and donations. The Centre building is owned by a Trust which comprises of representatives from the Tasman District Council, General Practitioners and community. If you wish to know more about joining this group ask at the Health Centre for information.

The Health Centre staff consist of:


- 6 General Practitioners (Tony Eames, Pip de Hamel, Pete McKenzie, Mark Fry, Audrey Vickerman, Eloise Fry)
- Practice Manager (Jo Francois)
- 4 Practice Nurses (Sue Stevenson, Kay Ford, Lana Hylkema, Jose Spearson)
- Healthcare Assistant (Lyn Moore)
- 5 Receptionists (Marie Gardiner, Sally Ladley, Alana Talbot-Price, Nancy White, Julie Hall)

Also working from the same purpose built building are:

- District Nurses
- Hospice Nurses
- Public Health Nurse
- Plunket Nurse
- Physiotherapist

Other providers who use the rooms:

- Counsellors
- Dietitian
- Asthma Nurse



We are a Teaching Practice for General Practice Registrars, also Trainee Interns and Nursing Students.

The Health Centre has been a Cornerstone Accredited General Practice "Aim for Excellence" since 2009 and have recently completed our third assessment cycle for continued Accreditation until 2016. Cornerstone Accreditation requires the Practice to achieve mandatory New Zealand standards for the delivery of healthcare. We have excelled in the standards required and our goal is to continue to provide excellent healthcare to our patients and deliver our services with empathy and understanding.

Surgery hours:

Monday to Friday	8am – 5:30pm
Wednesday	8am – 7pm

(Phone: 03 5418911)

After Hours Care provided by Medical & Injury Centre, 96 Waimea Road, Nelson.
Phone either 5418911 or 5468881



Wakefield Health Centre

Surgery hours:

Monday to Friday	8am – 5:30pm
Wednesday	8am – 7pm

New Enrolments Welcome

Phone 541 8911
12 Edward St Wakefield

On The Beat

It's been a while since putting pen to paper but judging by the comments and discussions I have had with members of the Wakefield community about a recent article in the local newspaper, I guess I better talk about it's contents. Thanks for your support and I can see that you are very passionate about your local Police which we are really appreciative of but please hold off writing letters or lobbying anyone. Yes, the Nelson Police are in the middle of looking at how to best deliver our services to the community. This process has been occurring all around New Zealand and as you know, the Government isn't giving us any more money to run our business. At the moment the Nelson Police are in the middle of that consultation process. The comments about Wakefield staffing numbers changing are just that; comments. Nothing is set in concrete yet and once the consultation process is finished and the boss has decided on what model he believes is best, then at that stage he will discuss it publicly. So please give us some breathing space and don't panic yet. Your comments have been noted by myself and will be passed on to the boss as part of my submission within this consultation process. Hopefully by next months article we will have a clearer picture. On a final note, with summer just around the corner we are starting to get a lot of suspicious activity in our rural areas. This could be strange motor vehicles or unknown persons wandering about. Please get the rego numbers and any descriptions and pass it on to us. These activities are mostly related to up coming cannabis growing season, but we also have had an increase in stock thefts and reports of scrap metal being stolen. Look after each other
Peter Cobeldick - Wakefield Police



You and Your Dog
Educate • Understand • Bond

Reward Based Training
Kinder for dogs, enjoyable for owner

Group Training Classes
Personal Home Training
Dog Walking
Dog Bite Prevention
- Education For Children

Vikki Pickering
Dip. CBST
03 541 9752
027 513 8879
youandyourdog@hotmail.com

www.youandyourdog.co.nz



Wakefield School & Community Swimming Pool

Now open for the season

Collect your key from the school

\$95 for the family if paid before December 1st



Wakefield Volunteer Fire Brigade Report

Hey everyone, its great to be back in our local newsletter. Well done to all involved with getting the paper up and running again. We are only too happy to keep you all informed of what's happening in our department and I know you love to know what's happening when the siren goes off at all hours.

We have had a couple of lads join the fire brigade in the last few months, Dylan Knott and Brad Reader. At this stage they are going through the process of learning where all the gear is and how to use it before they head off to do their seven day recruit course. Both of these boys work full time; one a bushman and the other a builder so fitting in fire brigade is a big ask and we appreciate the commitment these guys have made to help their community. As we only train once a week on a Wednesday night, trying to get newbie's up to speed can be a challenge as family and work always take priority so we just work in with them with no added pressure to get everything done fast so they can be on the next course.

We are always keen to have new people aboard so even if you would just like some more information to help you decide if its for you or not, you're more than welcome to pop down and see us on a Wednesday night from 6.30pm or contact our chief. Over the past few months we have had a few groups through the station. The kindy kids were here learning about how we get a call and what happens from there - from answering the call, getting dressed in the right gear, to getting on the truck and of course we had to have lights and sirens on which went down a real treat! Due to the changeable weather their plans to go to the park for lunch were squashed as the rain tipped down, but the offer to have lunch at the fire station was welcomed with squeals of delight. It was great to have you at the fire station and no I haven't forgotten those mums that expressed interest in joining. Don't use the kids as an excuse, we have provisions in place for that. You may be quite surprised how we can accommodate you. Come back and see us.

We have also had the local scout group through learning about fire extinguishers and how to use them properly and on what types of fires. These boys and girls did well at putting out a real fire safely. This is a valuable skill and as some of the parents and teachers confessed, you see the extinguishers everywhere as buildings are permitted to have one but do you really know how to use it?

November marks fireworks season again which can also mean a busy time for the brigade as people don't adhere to the safety messages. We often deal with grass and tree fires, damage to houses from fire and worse of all, burns, especially to children. Please take care if you are having fireworks at your place. Please take note if its too windy as your neighbours wont appreciate you setting their property alight. Animals are also very stressed this time of year so make sure the critters are safely inside or well out of harm's way - move stock, horses to a back paddock if possible. The best option is to look out for the public displays, this way you are guaranteed to get more bang for your buck! Below is our call list. As you see we are still quite busy with medical assists now taking up half our calls. The community is very lucky to have the brigade turn out to help them in their time of need. This means you get help fast and the handover with St John is quicker and you're off to where you need to be - hospital.

As we fall back into the routine of reporting within this publication our call details we be on the monthly basis. To date this year the brigade has responded to 126 incidents, ranging from medical assists, structure fires, scrub fires, motor vehicle accidents and of course the odd false alarm. The twelve months of last year saw the brigade respond to 148 incidents. Incidents that we attend for medical support will only ever be listed as 'medical assist' to protect the identity of the person or persons that we assist as many of these incidents can be private medical issues.

- Call 123, Oct 1st 13:13hrs Medical assist, Wai-iti
- 124, Oct 7th 17:10hrs Medical assist, Wakefield
- 125, Oct 8th 21:36hrs Fire in a compressor, Ecopine Eves Valley, fire was extinguished by the sprinkler system by the time we arrived. Some investigation to ensure the fire was out and the plant was in a safe state was required before we could return home. This fire was also attended by crews from the Brightwater Rural Fire Party, and the Richmond and Nelson Brigades.
- 126, Oct 9th 15:48 Motor vehicle accident, Hope Saddle, a truck carrying rubbish from Westport to Nelson over turned on the Hope Saddle, Wakefield crew was turned back en-route.

Until next time, take care out there - Simon Ladley, Chief Fire Officer



Wakefield Volunteer Fire Brigade taking the Wakefield Scouts and parent help through fire extinguisher training

southfuels
Spring Grove

Compare our Battery Prices
You will be SURPRISED



Main Road North Spring Grove, Wakefield

Ph: 03 541 8444

We are open 7am - 6pm Mon - Fri

8am - 2pm Saturday

Closed Sunday



Hill Top Native Nursery

Propagators and Growers of
New Zealand Native Trees and Shrubs
Open for sales by appointment

Owners: Bevan & Rachael Hart
74 Eighty Eight Valley Road
Wakefield, Nelson 7025

Phone 03 541 8763

Phone: Bevan 027 541 8763

Rachael 027 286 7927

Fax: 03 541 8764



Ph 03 541 9641



Making Your
Business
Stand Out
From The Bunch



Design
Printing
Apparel
Branding
Promotional

GET ALL YOUR
PRINTING, PROMOTIONAL & APPAREL
AT ONE CONVENIENT PLACE

WWW.WAKEFIELDPRINT.CO.NZ

CARTER & SON'S Concrete LIMITED

Sam Carter
MANAGER

**General
Concrete Work**

Floor Placing and Finishing
Driveways & Patios
Exposed Aggregate
Professional Service

P: 0275 811 621 F: 03 541 9081

E: carterandsonconcreteltd@gmail.com

www.carterandsonconcrete.co.nz

The Way We Were

In September 1841, Captain Arthur Wakefield left England to search for suitable lands in New Zealand on which to found settlements for British immigrants. The three accompanying ships arrived at the early settlement of Wellington. Wellington was the first settlement founded by the New Zealand Land Company, formed by Wakefield's father and other speculators in England to promote emigration to New Zealand.

Prospective immigrants could enter a ballot to purchase sections of land for 300 pounds per allotment. The first three ships carried surveyors and other skilled workmen with their families. Quickly the three ships again set sail, this time for the top of the South Island, searching for good farming land and a place to found the town of Nelson.

Land was purchased from the current occupiers, the Maori tribe Ngati Toa and their several allied tribes. Their Chief Te Rauparaha from the North Island had only in recent years de-populated the area in a series of wars, leaving only a scattering of fugitives and a few score of his warriors to occupy the land.

Thus, the previous occupiers gone, the conquerors were quite willing to sell the land to the Europeans and return to the North Island.

Exploring the coast line and waterways, parts of Golden Bay looked promising, but the discovery of the entrance through the Boulder Bank to the peaceful haven of water inside excited Wakefield and after a quick exploration, he announced that this site would be the Township of Nelson.

Over a few days from 1st November 1841, the crews and passengers quickly set up a tent town and began to survey the land.

Land purchased from the Maori extended many kilometres from Nelson. Captain Wakefield allotted land to the ballot winners, who promptly proceeded to stake their ownership. Part of this land lay across the Waimea plains. Two of Wakefield's close associates, Captain John Wilson and Captain Richard England were granted sections in what is now Wakefield and their sites covered the area of the existing village.

Many immigrants, who did not own land, found that section owners were willing to sell or lease them a few acres to get established. As the following year went by, land around Nelson was quickly taken up as new immigrants poured in. In 1842, Edward Baigent from Surrey arrived with his wife and five children and initially settled in Nelson. Without any title to land Edward quickly searched for land to rent or buy. Captain Wilson agreed to sell him acres from his own section. He was an 'absentee' landlord as were many others. Edward was quick to settle on this land with his family and imported machinery to construct a saw mill. This same land was farmed by the Baigent family until well after the 2000 and is just over the Pigeon Valley Bridge adjacent to the village centre.

Initially the area was named 'Pitfure' after Captain England's home in the UK. In mid 1843, both Captains Wakefield and England were killed in the 'Wairau Incident' at a site near Blenheim. A number of Maori and British settlers fought over the surveying of land in the area and in what became a great tragedy, a number were killed on both sides.

The tentative title of 'Pitfure' was replaced firstly by the name "Township of Arthur" but this name was soon replaced by "Wakefield" after the much respected leader of the settlement, Arthur.

It is said that Wakefield is the earliest inland settlement in New Zealand and many historic buildings exist in the area. St John's Church was built in 1846 and is the second oldest existing Church, the school was founded in 1843 and the current Wakefield School is still on the same site. Many residential houses date from the 1850's onwards.



Hair Raisers
Magic Can Happen
Ph 541 8312

HOUSE REPAIR

Small Job Specialist

General Carpentry

Plaster Board Stopping

Painting

BRIAN GRANT

Owner/Operator

17 Lord Auckland Road

Wakefield 7025

027 541 9250

03 541 9250

gibberjabber@xtra.co.nz

Over 20 years Experience



Pets & Animals

BUGS!

As summer approaches and the temperature increases, so do the numbers of some of our pesky parasites – fleas and ticks. The NZ cattle tick is badly named as it is happy to attach to your cat, dog, rabbit, sheep, deer and horses as well as cattle and even birds. It is the only species of tick in New Zealand that affects our domesticated animals.

Ticks like warm weather so appear from spring until autumn. The life cycle involves four stages – egg, larva, nymph and adult. Most of the life cycle is spent on pasture but the larvae, nymphs and adults must feed on an animal host's blood for about 5-7 days before dropping off and developing to the next stage. A mature adult female can lay about 2000 eggs over a 2-3 week period. All stages can survive through winter.

Large numbers of ticks can cause animals to become lethargic, dehydrated and off food due to anaemia. Hide damage occurs and young animals may die due to blood loss.

The good news about the NZ cattle tick is that it is not known to carry any blood-borne diseases such as tick paralysis or encephalitis, as ticks do in other countries. Ticks survive best in rough pasture, especially areas of rushes. So tick populations can be influenced by keeping pasture short through good close grazing or topping. Pasture can also be sprayed with insecticide. Bayticol is a pour-on treatment for cattle and deer. It is best to develop a tick control programme to suit your farm system.

Ticks on cats and dogs are reasonably easy to control by using Frontline Plus – a product that also controls fleas.

Horses can be treated with Permethrin spray, mainly focusing on the legs, belly and face. Cattle pour-ons have been used but they are not designed for horses and can be irritant. Removing horses from affected pasture is another option.

Dogs and cats are the preferred host for the common household flea so having pets at home greatly increases the risk of flea infestation.

The fleas that you may see on your pet are adult fleas and are only a small percentage of the total flea population. The rest of the flea population includes eggs, larvae and pupae which are well hidden throughout carpets, bedding and furniture.

With warmth and humidity, the flea lifecycle can be completed in as quickly as 14 days. Flea populations will be relatively low at this time of year but if left uncontrolled, you could have an epidemic by late summer/autumn.

DON'T WAIT TO SEE FLEAS! If you are seeing fleas on your pet, there is already a flea population in your house. And once established it can take months to eradicate. The best way to protect your pet and your house from fleas is PREVENTION.

Successful flea control involves eliminating fleas from your pet(s) and controlling fleas in the environment. Nowadays there are easy-to-use products that do both – simply by putting a few drops of liquid on the back of your pet's neck every few weeks. Thorough vacuuming of carpets, furniture and wooden floors will reduce flea numbers, as does frequent hot washing of pet bedding. But if you have an epidemic, an insecticidal bomb might be necessary!

Freaky flea facts:

- Adult fleas can jump 600 times in an hour. Each jump, in terms of the flea's size is the equivalent of a person clearing a 50-storey building!
- The record long jump for a flea is 33cm.
- In just 30 days, one adult female flea can multiply to 100,000 fleas!
- Worldwide, there are about 3000 different types of fleas, but the cat flea is the most common one to be found on cats and dogs.



TOWN & COUNTRY
VET
WAKEFIELD

Open Hours
Monday to Thursday
8.30am to 5pm

Consulting Hours
Tuesday 9am - 12pm with Brenda
Thursday 9am - 12pm with Paula
(or by arrangement)

541 8974

24 Hour Emergency Vet
544 1200

www.tcvet.co.nz

WEED MATTING!

Should I use plastic woven weed matting?

This is a question that I have been asked continually. When I was fresh out of Technical College, having studied at the Welsh College of Horticulture in the UK, I promoted the use of woven plastic matting. This was because it was easy to use and very effective at preventing weeds from becoming established and could be concealed with a covering of bark, shells or stones. However, being slippery, sometimes the mat would become exposed.

Now, after many years of designing and constructing gardens, I have learnt that this is not a beneficial method for the promotion of a rich friable soil with high worm activity. Upon inspection of earlier projects, I discovered that the matting was in fact depriving the soil of oxygen, becoming compacted and with little or no worm activity.

Since the matting is there only to provide a short term measure for preventing weed growth until a dense plant growth permanently takes over that role, I have found it is preferential to either use a biodegradable form of matting, or as I prefer, to apply a deeper mulch of bark of between 50–75mm. This not only suppresses the weeds but allows the soil to be enriched as the lower layers of bark will naturally compost down. Obviously an annual top up is required but this has the benefit of keeping the garden looking fresh and tidy. It also allows for the introduction of seasonal corms, bulbs and tubers.

So next time you are planning a new garden or replanting an existing area, it might be worth giving some consideration to the long term effects. A healthy soil means healthy plants.

Written by Jason Preller of Kernow Landscape Designs



Designing and constructing quality homes and gardens since 1984.

For a free site visit and discussion phone Jason Preller

021 167 3803
or 03 541 9141

email: kernowlandscapes@ihug.co.nz
www.kernowlandscapes.co.nz



Lay of the Land



Tasman Skate Park Tour coming soon...



The Tasman Skatepark Tour is coming to town....The legendary SK8 and BMX tour returns to the Tasman region this summer, expanding to include a Wakefield stop over on the seven date circuit. Made possible thanks to the Cheapskates mobile skatepark, Whitby Way Carpark will host the tour on the morning of Saturday 12th January 2013, with age group competitions in skate and scooter disciplines commencing at 10.30am and running through to 12.30pm. The Tasman Skatepark Tour is a free community event. Complementing the smoking hot thrills and spills of the portable park, will be pumping tunes and live music from Mix Masta Mootree. Entries taken on the day, with a swag of cool prizes and promo give-a-ways up for grabs.

For more information, please contact Paul McConachie, Tasman District Council, 543 8525

WAKEFIELD QUARRY

Pig Valley, 6km from Wakefield



FOR: Basecourse 70mm
Topcourse 40mm
Topcourse 20mm
Drainage metal 40mm
Landscape Rock
Lime

Truck Available

Limeworks 541 9093
Tony Dick 541 8392 a/h
Philip Dick 541 8666 a/h



OPEN:
MON - FRI 7am - 5pm
No longer open Saturdays

Live Local Shop Local

Profiling a Wakefield business - Helping keep the great businesses in our Village

'Cheaper than the town supermarkets', but right here in the village

Lindsay Alderson and his team at Wakefield Butchery have recently been celebrating their silver medal in the 100% NZ Ham of The Year competition. Surprisingly, it was the first time Lindsay had entered a ham, despite his 48 years of experience. His additive and gluten free secret recipe happily impressed the judges just as much as it impresses shoppers at his Clifford Road store. Ham sales have tripled since Lindsay bought the business almost two years ago, and along with pork pies, bacon and salamis, they are some of his most popular products. If you would like to order one of his prize winning hams for Christmas, he is taking orders now. He will only have a limited supply, so don't leave it too late or you'll have to listen to people telling you what you missed out on all next year!

Whilst there has been a butchery in Wakefield since 1909, early shoppers would no doubt be amazed if they could call in today. Alongside the choice cuts of beef, lamb, pork, chicken, duck and venison, the new range includes local eggs, fresh vegetables, smoked fish and hazelnuts. Tapawera's Wangapeka Dairy now supplies whole milk and their delicious range of cheeses, adding to the established range of jams and chutneys from Kevi's Kitchen and Villa Grove Estate Olive Oil. Lindsay is keen to support local suppliers and make sure their tasty goods are readily available to Wakefield Villagers.



He is also a well known supporter of community events, supplying the school quiz and gala too. Many people enjoy Wakefield Butchery's home kill processing, but for those of us who buy all our meat, the value right here in the village can't be beaten. Lindsay is confident that his everyday prices are consistent or better value than those at town supermarkets, and often the big brands 'special offers' are comparable to his regular prices. So take advantage of the wonderful fresh range that is five minutes from your door and visit Lindsay and his friendly team today. Alternatively, if you live within five kilometres of the store, phone or email in your order and have it delivered to your door FOR FREE each Thursday*. Can you think of another village with such a great local butcher? No, nor can we!



Wakefield Butchery
10 Clifford Road, Wakefield

541 8137

wakefieldbutchery@snap.net.nz

Open Monday – Friday 8am – 6pm, Saturday
9am – 2pm

*Free Thursday home delivery subject to \$20.00
minimum order value

Christmas Fair at Tapawera

Planning is well underway for the second Tapawera Christmas Fair which will be held in the grounds of the Hidden Gallery, 4854 Motueka Valley Highway on Sunday 9 December 10am – 3pm

Come and relax under the trees. There will be lots of stalls, all with a Christmas theme, loaded with goodies for you to enjoy and hopefully help with your Christmas shopping.

There are still some spaces left if you are interested in having a stall, but you need to act quickly.

For further information contact
Sandy Rogan on 03 522 4617 or
Sandra Nicholls on 03 522 4560

Mark Sunday the 9th of December on your calendars now.

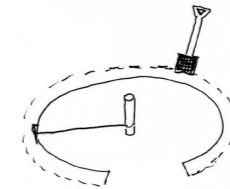
If you are interested in having a stall at the fair, please contact Sandy on 03 522 4617 or email stormrogan@yahoo.co.uk for an application form.

BEAN TIPI

Provided by Christine Grieder

What you need:

- Compost
- 7 bamboo sticks about 2m long
- String to tie them together
- 14 climbing beans
- Spade



You could try using purple pod climbing beans. These are purple beans which turn green when cooked. They are a very tasty bean variety. Leave a few beans to grow to maturity [till they are brown] and keep them for next years seeds.

To make the tipi:

1. Draw a large circle about 1.2m. It needs to be large enough for you to sit in.
2. Use the spade to dig the ground around the circle about 20cm and mix in plenty of compost.
3. Tie the bamboo sticks together at one end and spread them out the other end
4. Push the spread out ends firmly into the ground around the dug out side of the ground. Leave a larger space for the entrance.
5. Weave string around the poles to make a 'net' for the beans to climb on.
6. Sow the beans around the bottom of the tipi in the dug up ground. Don't forget to water them.



Wakefield Playcentre

For the month of November the Sprig & Fern Tavern on Ellis St, Brightwater are hosting Quiz nights every Thursday at 7.30pm with the funds raised going to Wakefield Playcentre. It would be great to have a good turn-out these nights to support Wakefield Playcentre. So if you are looking for something to do on a Thursday night head down to the Sprig & Fern in Brightwater. We would like to say a big thank you to Carters for supplying us with timber to make our new vegetable garden. Playcentre sessions are run Monday to Friday from 9.30am to 12pm. You have the option to stay with your children or leave them to it. The first three sessions are free, so that you can really trial Playcentre and see if it works for you. WINZ subsidies are available.

If you want to come and have a look at Wakefield Playcentre give Wendy or Jen a call on 5418866.



Mountain Valley Honey is locally owned by Murray and Nicky.

Our bees forage for honey in the Marlborough Sounds and Mt Richmond Forest Park.

Try our Manuka, Honeydew, Autumn Gold, Clover, Kamahi and Native Bush Honey's

Find us at
www.mountainvalleyhoney.co.nz

Country Players

Country Players return to the stage of Wakefield Village Hall with another hilarious end of year show,

"My Husband's Nuts"

by acclaimed NZ comic playwright Devon Williamson. Set in a rural South Island farmhouse, Farmer Jack disappears... and returns as someone else. How will his wife cure him? Or 'them'? Can the audience connect a banana to a bayonet?

A quad bike to a quack? Or a fart to a fort?

Following last year's sell out season of Agatha Christie's "Mousetrap"

expect more brilliant dinner theatre performances on 30th November, 1st, 7th & 8th December, with a BYO Picnic night on 5 December too.

Tickets \$36 (Dinner Theatre) or \$15 (Picnic Show) from

Dixie on 03 541 8862 or email enquiries@countryplayers.org.nz - be sure to include your name, the date of the show you wish to attend and number of seats.

Doors open at 6.30pm. Meal served at 7pm. Show begins at 8pm for the Dinner Theatre. Doors open 7pm and show begins at 8pm for the WPicnic Theatre.



Wakefield Trading

Its All About Locals Looking After Locals

Stock Feed for All Animals & Poultry

Pet Food for All Animals & Birds

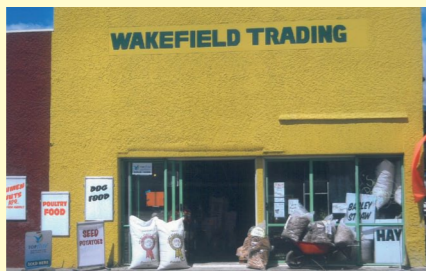
Gardening Requirments

- Seed Potatoes
- Vege plants
- Fertilisers

Wool Ready for Spinning and Gotland Sheep Skins

Dry Pine Firewood and Kindling

And Much Much More.....



Talk to us about how we can help you

**62 WHITBY ROAD
WAKEFIELD
541 8415**

Wakefield Plunket Playgroup

Wakefield Plunket runs a free playgroup for all families in the Wakefield and Brightwater area. Playgroup is held on every Wednesday morning from 9.30am to 11.30am at the Methodist Church on the corner of Edward and Arrow Street.



Over term three the children have been involved in different activities they have been interested in. Some of the things the children have made are; caterpillars, masks and at the end of term, everyone who attended on the last day, planted a potato in a bucket to take home and watch grow, to be able to eat at Christmas time.

We visit the Wakefield School library and take books home to read, to name some of the things we do. Come along to meet other mums and children from around the area and enjoy a friendly chat and cuppa. The children get to play with all the resources we have available for their learning and developing through playing.

Everyone is welcome to attend.

- *Planting projects
- *Landscaping projects
- *Arborist work
- *Tree felling
- *Laying of pavers
- *Backpack spraying
- *Hedge trimming
- *New establishment of lawns & Lawn care
- *And much more green care of your property



This is done by a trained arborist and nurseryman with many years of experience in plant production and the landscape business

contact **MORTEN** for a free quote
Ph: 021 206 9914 or 541 86 85
email: mortenlausen@gmail.com

Full insurance cover while all work is being done

Community Diary & Classifieds

MONTHLY COMMUNITY CALENDAR

NOVEMBER 2012

Thurs 1	9.00 am - Art Group, Village Hall
	10.00 am - Music & Movement, Methodist Church
	6.00 pm - Circuit Class, Village Hall
Sat 3	9.30 am - Logging Weekend, Pigeon Valley Steam Museum
Sun 4	10.30 am - Wakefield School & Community Pool Opening
	9.30 am - Logging Weekend, Pigeon Valley Steam Museum
Mon 5	9.00 am - Mainly Music, Village Hall
Tues 6	7.30 pm - Village Hall Committee, Village Hall
Wed 7	9.00 am - Sewing Group, Village Hall
	9.30 am - Wakefield Playgroup, Methodist Church
Thurs 8	9.00 am - Art Group, Village Hall
	10.00 am - Music & Movement, Methodist Church
	6.00 pm - Circuit Class, Village Hall
	6.00 pm - Community Bowls, Wakefield Bowling Club
Mon 12	9.00 am - Mainly Music, Village Hall
Tues 13	7.30 pm - Wakefield Community Council, St Johns Church
Wed 14	9.00 am - Sewing Group, Village Hall
	9.30 am - Wakefield Playgroup, Methodist Church
	7.30 pm - Nelson Vintage Engine & Machinery Club
Thurs 15	9.00 am - Art Group, Village Hall
	10.00 am - Music & Movement, Methodist Church
	6.00 pm - Circuit Class, Village Hall
	6.00 pm - Community Bowls, Wakefield Bowling Club
Mon 19	9.00 am - Mainly Music, Village Hall
Wed 21	9.00 am - Sewing Group, Village Hall
	9.30 am - Wakefield Playgroup, Methodist Church
Thurs 22	9.00 am - Art Group, Village Hall
	10.00 am - Music & Movement, Methodist Church
	6.00 pm - Circuit Class, Village Hall
	6.00 pm - Community Bowls, Wakefield Bowling Club
Mon 26	9.00 am - Mainly Music, Village Hall
Tues 27	Waimea South Historical Society
Wed 28	9.00 am - Sewing Group, Village Hall
	9.30 am - Wakefield Playgroup, Methodist Church
Thurs 29	9.00 am - Art Group, Village Hall
	10.00 am - Music & Movement, Methodist Church
	6.00 pm - Circuit Class, Village Hall
	6.00 pm - Community Bowls, Wakefield Bowling Club
Fri 30	7.00 pm - Country Players "My Husbands Nuts", Village Hall
	7.30 pm - Womens Biz, Bushwalk B&B

DECEMBER 2012 [first 2 weeks]

Sat 1	7.00 pm - Country Players "My Husbands Nuts", Village Hall
Mon 3	9.00 am - Mainly Music, Village Hall
Tues 4	7.30 pm - Village Hall Committee, Village Hall
Wed 5	8.00 pm - Country Players "My Husbands Nuts", Picnic night
	9.00 am - Sewing Group, Village Hall
	9.30 am - Wakefield Playgroup, Methodist Church
Thurs 6	10.00 am - Music & Movement, Methodist Church
	6.00 pm - Circuit Class, Village Hall
Fri 7	7.00 pm - Country Players "My Husbands Nuts", Village Hall
Sat 8	7.00 pm - Country Players "My Husbands Nuts", Village Hall
Sun 9	10.00 am - Tapawera Christmas Fair, Hidden Gallery
Mon 10	9.00 am - Mainly Music, Village Hall
Tues 11	7.30 pm - Wakefield Community Council, St Johns Church

Wanted: Urgently some kind person over the age of 25 to take a young adult for driving lesson's please phone 541 8873

Carpool Wanted: Person wanting to car pool into richmond 3 maybe 4 days a week includes Saturdays please phone 541 8873

For Sale: Set of tubular bunks \$100 please phone 541 8873

**FOR SALE
WANTED
FREE
HELP**

**WE NEED YOUR
FOR SALES
WANTED
OR HELP REQUESTS**

**PLEASE CONTACT
541 9005
SOME LIMITATIONS APPLY
PLEASE ASK
SOME MAY BE DEEMED
ADVERTISING AND WILL BE
CHARGED A SMALL FEE**

ANTIDOTE APPLIANCE REPAIRS LTD



Servicing all major brands of whiteware.

TIM LLOYD
79 Treeton Place
Wakefield
antidote@ihug.co.nz

For warranty, service or second hand sales call:

03 541 8877 or 021 1601 004

www.antidoterepairs.co.nz

Village Sports News

Wanderers Sports Club Pig Hunt Challenge

This fantastic event was the major fundraiser for the Wanderers JAB Rugby this year and was held on the last weekend in September. It was really well supported with 109 senior entries and over 70 junior and intermediate entries. The winner of the major prize of the "average weight" pig was Nyrin Wills who very kindly donated half of this \$1000 prize money back to the Wanderers JAB. The special prize of the Wanderers Sports Club Pig Hunt Challenge Trophy went to Wanderers club.

Over \$10,000 worth of prizes were awarded, everything from dog biscuits to helicopter rides, and everyone was kept entertained by a wood chopping display, pig carrying competitions, a fantastic George Paki Paki hangi and, later in the evening, great music from Antoni Neal.

The club would like to thank all of their amazing sponsors and all the helpers for their very generous support and help in making this inaugural event such a great success.



Holly Moffatt from Wakefield showing great form carrying a pig



Juniors and Intermediates eagerly awaiting their prize giving



The junior and intermediates rabbits, hares, possums and goats



Weigh in time – the impressive line up of pigs

Wanderers Sports Club Pig Hunt Challenge

Thank you to all of our amazing sponsors

WAKEFIELD BOWLING CLUB

The Club's third winter season started on Saturday 5 May 2012 and concluded 20 weeks later. It was a reasonable winter weather-wise with not too many days lost because of rain. Over sixty bowlers signed up for the winter season and bowlers from around the district who played on a casual basis numbered over one hundred. Each week the total of numbers playing was in excess of one hundred. Winter Club Championship events run at the weekends were all well supported as were the midweek Mini Tournaments staged on Wednesdays and Fridays. Eight Open Tournaments were staged including a two day event over Queen's Birthday weekend and all had the maximum number of teams competing. Various club visits were also hosted.



The winter trophy winners were as follows:

Fours: Tom Closey (s), Rona Vessey, Margaret Eames, Richard Henley

Triples: Neville Turner (s), Margaret Eames, Carolin Mason

Pairs: Tom Closey (s), Alison Edwards

Singles: Gavin Closey

All in all a very successful winter. Anyone interested in playing either winter or summer bowls should contact either Tom on 541 8809 or Mike on 541 9500.

More recently, the Wakefield Bowling Club held a Have a Go Day on Sunday 14 October. We had advertised through an article in the

Waimea Weekly and a leaflet was dropped in all letter boxes in the area. Community members and families were invited to come along to the club, check out the facilities and have a go at bowls. On the day, 26 people of varying ages, from 9 years to over 70 years turned up to have a go. Some others turned up to watch, bringing children and even a couple of dogs. It was fantastic to see the numbers coming through the gate. The club was also running the Club Championship Junior Pairs on a couple of the rinks so those coming to Have a Go could see our junior players of 1 - 5 years experience playing in a championship game. We had plenty of club members who had come along to help show how to hold a bowl, how to deliver it and the correct position on the mat. There was plenty of laughter and bowls going in all directions to start with but very soon most got the hang of the game. They played from 1.30pm until 4pm then retired to the club rooms to socialise and have a well earned drink. Some of those who attended have already signed up as club members, and many have agreed to join in the Community Bowls that we will be running evenings from 6pm to 8pm starting on Thursday 8 November.

We were very pleased with the response and look forward to signing up a few more members.



Wakefield Family Wins Regionals



Monique and Marshall Hore with coach Ngaire Calder after winning the Primary day of the Nelson Bays Regional Primary/Intermediate Schools Tournament.

Wakefield Bowling Club Community Bowls



Come to the Wakefield Bowling Club and have a go.

Teams of 3-4 persons or register as an individual or couple and we will place you in a team

Community Bowls runs every Thursday for 4 weeks starting 7th Feb Time: 6pm – 8pm great fun for all.

Cost \$45 adult, Kids Free Bowls, simple instructions and a great atmosphere supplied.

Sausage Sizzle & refreshments available for purchase.

For more details and to register phone Tony 541 8316.

Community Notices

Wakefield Craft Fair

The 35th Annual Wakefield Craft Fair is now being planned for 2013. The fair will be held on Wednesday 2nd January 2013 on the Wakefield Village Green and in the Wakefield Hall. Stall holders are now being called for from around the Wakefield and Brightwater areas. Items must be of a handcrafted nature and not imported or secondhand. We are also looking for a local non-profit organisation that would like to do some fundraising by holding a sausage sizzle/drink stall. If you would like any information or to book a site, Please phone Glenn or Leanne Turner on 5418306.



Wakefield Craft Group

Come and join the ladies craft group
Wednesday mornings in the Village hall supper room
9.15am - 12pm.
Bring any project - sewing, knitting, crochet etc.
and join us for coffee and compnay
\$3 per morning
Phone Judy on 541 8342

Wakefield Village Hall

For bookings, contact Rob Merilees 541 8598

Foxhill Hall for Hire



Five minutes drive from Wakefield on State Highway 6, this hall started life as a school. In 1937 The Foxhill Hall Assn Incorporated was established and bought the building from the Education Board for £100.00. Named "Rutherford Memorial Hall" in honour of Ernest Lord Rutherford, there is a display in front of the hall which gives details of his connection with the building. In the decades since 1937, many members of the community have served on the Foxhill Hall Association as trustees, and the hall is still a popular venue for events. The current committee recognises the hall's significance as an historic building, because of its connection with Ernest Lord Rutherford. The building was formerly the Foxhill School, where Rutherford first started school. The building was modified to its present layout, in the early 1950s. The committee hopes to redevelop the hall as a vibrant community centre for the district south of Wakefield-Kohatu, and recreate a community focus, lost since the closure of the school in 2001. The hall committee also manages the tennis courts which are designated a reserve and managed by the committee on behalf of the Tasman District Council. The courts are available for use free of charge. If interested in hosting a local event or activity or hireage for social events please contact Helen Pullan, Booking Officer, 541 8058 for details of rates and conditions of hire.

Cooking Group

Daring, experimental, congenial fun Cooking Group would like to hear from you if you are interested in joining us. Now's the time, we are just putting our group together.

Text or ring Rita @ 0272288902

Live Well Stay Well

Meets fortnightly on Tuesday mornings at the Wakefield Village Hall, 9.45-11am followed by walking group 11am -12md. recommences after Easter 2013



Under the Wisteria at the Wakefield Villa Tearooms In photo, Margaret Clark, Rita Bell, Sonja Lamers, Jenny Downey, Heather Gardiner, Jo Donovan, Yvonne Moore, Eileen Lane.

This group of ladies met recently to plan next years programme for The "Live well Stay well" group. We are a friendly health and social group that meets fortnightly on Tuesday mornings with a varied programme aimed at the over 50s and those recently moved to the Wakefield and Brightwater area. We cover all sorts of issues and interesting subjects with varied speakers and activities. So watch this space and the local notice boards for whats on. If you want to register your email address with us for early notification of the programme, please call Margaret on 5419693 or Yvonne 5422235

Wakefield Brightwater ART Group

Meets every Thursday 9am-12noon. We are a small group of enthusiastic painters, who encourage one another and enjoy painting in different medias. Come and join us at the Wakefield Village Hall. We will have a break over Christmas Holidays Our last day for the year is 29th November 2012 and we will start again on Thursday 14 February 2013.

For more info please phone Sonja on 5418176 or email:sonjal@ts.co.nz

Music and Motion



Music and Motion runs every Thursday morning at the Methodist Church on the corners of Edward and Arrow streets. Music starts at 10am and runs to 10.30am. Afterwards there is time for the kids to play and for the parents, grandparents or caregivers to have a chat over a cup of tea and a biscuit. The cost is \$2 for one child, and \$3 for two or more children. So if you want to have some Thursday morning fun, come and join in and be ready to sing and dance. If you would like to know more phone Paul Tregurtha on 544 8394 Lesley Lister on 541 8324 or just turn up on the day.

Community Directory

Citizens Advice Bureau
548 2117 - 0800 367 222

Guiding Co-ordinator
Sue Burrowes 541 9689

Lord Rutherford Memorial Hall, Foxhill
Helen Pullan 541 8058

Pigeon Valley Steam Museum
Alan Palmer 027 319 7427

Rural Ramblers
Carolyn 541 9200

Spring Grove Drill Hall
C. Pike 542 3904

Totaradale Golf Club
Jacquie 541 8030

Wakefield Anglican Church - St Johns
Meet Sun 9.00am; 10.30am
Rev. Allan Wasley 541 8883

Wakefield Brownies
Vin Law 541 9190

Wakefield Community Library
Tues 10.30-11.30am
Friday 2.30-4.00pm
Wendy Gibbs 541 8490
Pam Dick 541 8392

Wakefield Football Club
Richard Malcolm 541 9429

Wakefield Medical Centre
541 8911

Wakefield Playcentre
Mon - Friday 9.30 - 12
Contact: 541 8866

Wakefield Primary School
Edward Street 541 8332

Wakefield Scout Group
Sheryl Guyton 541 9178

Wakefield Toy Library
Open Sat 9.30-11.30am
Chris Gaul 541 8148

Wakefield Volunteer Fire Brigade
CFO Simon Ladley 027 2577 786

Womens Biz
Justyne McGaveston 522 4488
Sonia Emerson 541 9005

Window on Wakefield
Articles/Content - 541 9005
Sonia Emerson

Country Players (Drama)
Philip Calder 541 8442

Junior Country Players
Dixie McDonald 541 8862

Nelson Vintage Engine & Machinery Club
Allan 027 319 7427

Pinegrove Kindergarten
03 542 3447

Rural Women
Dawn Batchelor 542 3628

St Joseph's Catholic Church
Sun 8am, Wed 10am
Fr David Gruschow 544 8987

Waimea Sheepdog Trial Club
Colin Gibbs 541 8435
gibbs@ts.co.nz

Wakefield Arthritis Group
Tues except 3rd in month 10am
Nancye Wearing 541 9040

Wakefield Bush Restoration Society
Doug South 541 8980

Wakefield Craft Fair
Leanne and Glen Turner
541 8306

Wakefield/Brightwater Guides
Sarah Arnold 5419481

Wakefield Methodist -Presbyterian Church
Meet 1st & 3rd Sundays 11am
Rev Paul Tregurtha 544 8394

Wakefield Plunket
Donna Todd 541 8583

Wakefield School/ Community Swimming Pool
Contact Phill Platt on 027 231 7610

Wakefield Smallbore Rifle Club
Ian Hutchings 541 8342

Wakefield Village Rest Home
Gerri Harvey 541 8995

Wanderers Sports Club
542 3344

Window on Wakefield Advertising
- 541 9641
Genie & Lindsay Bradley

Focus Wakefield
Diane Blackburn 541 9725

Just Gymnastics
Linda Mace 546 6013

NZ Postcard Society Inc.
Doug South 541 8980

Richmond Lions - Wakefield Representative
Ivan Burrowes 541 9689

Spring Grove Church of Christ
Meet Sundays 10am
541 8011

Top of the South Rural Support Trust
- gibbs@ts.co.nz
Colin Gibbs 541 8435

Waimea Sth Historical Society
Jeannine Price 542 3033

Wakefield Bowling Club
Margaret Eames 541 8316

Wakefield Community Council
Allan Wasley 541 9622

Wakefield Daidokan Karate Club
Andrew Paxton 0277 503606

Wakefield Indoor Bowls Club
Ren Olykan 541 8275

Wakefield Pippins
Kirsty Turner 541 9799

Wakefield Preschool
Contact: 541 8086

Wakefield School PTA
katdonmac@xtra.co.nz
Katrina Mclean 541 9049

Wakefield Tennis Club
Ngaire Calder 541 9419

Wakefield Village Hall
Rob Merilees 541 8598

Way to Go Co-ordinator
Vanessa Mairs 027 511 8826

AIR NEW ZEALAND™
holidays
NON STOP TO BALI!
BOOK NOW to get the BEST DEALS
Packages from... **\$1799pp**
Twin Share
Includes Return Flights from Nelson via Auckland to Bali direct, return airport transfers, 4 Nights accommodation & daily breakfast.

Locally Owned & Operated
Nelson Travel Broker
your journey starts here
P: 03 541 8417 E: info@nelsontravelbroker.co.nz
www.nelsontravelbroker.co.nz
Sue Ketel & Katrina Smith

All Accounts Matter Ltd
For All Your Accounting and Tax Needs
Sonia Emerson
Chartered Accountant
Mobile: 021 221 1009
105 Whitby Road, Wakefield 7025
Phone: 03 541 9005 Fax: 03 541 9305
Email: allaccountsmatter@gmail.com
CHARTERED ACCOUNTANTS

FOR SALE IN WAKEFIELD

NEW LISTING



46 EIGHTY EIGHT VALLEY ROAD \$549,000+
Spacious 3 Bedroom Character Home Plus Sleepout. Excellent outbuildings, extensive orchard, vegetable garden plus paddocks. Lovely garden setting.

NEW LISTING



25 TOTARA VIEW ROAD \$419,000+
Cosy, Modern 3 Bedroom Cottage On 5093m²
 Double garage, off-street parking. Flat walk to the Wakefield Village. Fantastic opportunity to go rural!



81 WHITBY ROAD \$299,000+
Lovely 3 Bedroom Home with north facing, fully fenced yard, complete with new bbq deck. Double garage. Rental appraisal \$350-\$370 per week.



70 TOTARA VIEW ROAD \$495,000
Charming Modern 3 Bedroom Home On 1.2 Hectares
 of gorgeous gardens and a few paddocks, double internal garage plus extra off-street parking.

SOLD IN WAKEFIELD IN THE LAST MONTH

SOLD



150 EDWARD STREET

SOLD



25 EDWARD STREET

SOLD



119 WHITBY ROAD

I am so pleased to support the new local publication, *Window on Wakefield*. My family and I have lived in Wakefield since moving here in 2005, after buying a 10 hectare life sentence block in Pig Valley in 2002. Our kids have attended the Wakefield school, and now catch the bus into Intermediate and College. We love the Wakefield village and surrounding Tasman area, and are committed to being here long term. I am very pleased to serve my local community with real estate services, especially working for a company who can provide a full sales service and support at a price that allows every seller to benefit by keeping more of their sale proceeds in their pocket. In the next edition, we will have some information about my wonderfully efficient Personal Assistant, who is also a Wakefield local.

WENDY PEARSON

021 567 722 / 544 5488



HEYWARD
 REALTY LTD
Licensed REAA 2008
 MORE THAN YOU WOULD EXPECT

LICENSED REAL ESTATE SALESPERSON (REAA 2008)

WINDOW ON WAKEFIELD
 ONLINE EDITION BROUGHT TO YOU
 BY



PHONE 03 541 9641