



# window on **wakefield**

Your Local News

Community News for the Wakefield Area

## LOCAL FAMILY WINS FOUR SQUARE ENDLESS SUMMER \$1000 PREZZY CARD

by Rebecca McGarvan McILwraith

When Wakefield resident Lynley Freeman went to work on February 17th she was expecting a normal day. But after lunch she received a phone call from Stuart Hore, owner/operator of Wakefield Four Square. "Hello Lynley, how are you? I am very pleased to tell you that you are the lucky winner of the Four Square Endless Summer Promotion. When would you like to pick up the \$1000 Prezzy card?"

Starting on January 23rd, the Four Square Endless Summer Promotion ran for three weeks. Each of the 72 South Island stores had one \$1000 Prezzy card to give away. To enter, customers purchased products from participating brands, including firm Kiwi favourites: Edmonds, Tip Top, Griffins, Nivea, Just Juice, Extra, Hellers, Blue Bird, Dove and Pascal.

This is the second year that the supermarket chain has delivered a customer driven summer promotion. Stuart, who is also the chairman of Four Square – South Island, says "It fits within the groups values and is a way to give back to the community." Stuart, Jacqui and their family moved from Christchurch to Wakefield and have been operating our local Four Square for 10 years now. Jacqui said "We have never regretted moving. Wakefield is a small community, and a great place to bring up kids." The couple are rapt with the support the store gets from the local community who they credit for the success of their business. Today the store employs 19 people.

Perhaps Wakefield's happiest resident is born and bred Lynley Freeman. Discussing her win she said "It's very exciting. I haven't won anything on this scale before." The timing couldn't be better, with a family birthday just around the corner. When asked how she would spend the \$1000 prize Lynley said "You can choose with a Prezzy card as it can used like a visa card." It will likely go towards supplies for the birthday party, a nice tea with her husband and of course on essentials from Wakefield Four Square. As a regular shopper she says, "They are always friendly and helpful. Whenever you ask for something they get it in". Cameron her son agrees - the store brought in French Vanilla Tip Top ice cream especially for them.

The prize was drawn in store by PC Jamie White at 12:30pm on Friday 17th February, with Stuart and Jacqui Hore present. In total over 500 entries were received. Jacqui cheerfully said "This promotion works because is all about giving back to the community and just like last year, the prize has gone to a great customer". More information on Four Square promotions and specials can be found on their website: [www.foursquare.co.nz](http://www.foursquare.co.nz). As always, Four Square staff are happy to help with any enquiries.



**HEDGES NEED TRIMMING? CALL ME!**

malcolm property maintenance

Richard Malcolm  
cell 021 02 545 565  
a/h 03 547 9155  
email malcolmpropertymaintenance@gmail.com  
395 eighty eight valley road  
WAKEFIELD



- ⇒ LAWN MOWING
- ⇒ GARDENING SERVICES
- ⇒ HEDGE TRIMMING
- ⇒ WINDOW CLEANING
- ⇒ KITCHEN JOINER

- ⇒ PAINTING - INT + EXT + GIB STOPPING
- ⇒ PRE SALE HOUSE CLEAN
- ⇒ RENTAL PROPERTY CLEANING
- ⇒ NEW FENCE & HOUSE REPAIRS
- ⇒ FURNITURE REPAIRS

## WINDOW ON WAKEFIELD

### How it works...

Window on Wakefield is produced and published by Focus Wakefield, a subcommittee of the Wakefield Community Council. All businesses advertising in this publication incur a cost for the advertising space allocated, depending on the size and location of the advertisement. The funds raised from this advertising are used to cover the costs of printing Window on Wakefield. No parties are paid for the time involved with editing, coordinating and publishing this paper. It is the intention that if surplus funds are raised from advertising, that these will be held in a separate bank account to be used for other community projects. The bank reconciliations and financial reports related to this account will be made available to any person who wishes to view them.

### Content...

Window on Wakefield is a community newspaper, and as such, we look forward to having articles and content contributed by our community. If you wish to submit a one off article, or suggest some regular content, please make contact with Sonia on 541 9005 or email [windowonwakefield@gmail.com](mailto:windowonwakefield@gmail.com) and read the Terms and Conditions below.

We try to ensure information published is truthful and accurate, but do not check the facts of the articles and therefore cannot attest to their validity. While all reasonable care is exercised, we do not accept liability for any loss whatsoever incurred through our errors, acts or omissions in relation to the content of an article, or for any consequences of readers' relying on the information published. Opinions expressed by contributors do not necessarily represent the views of the Focus Wakefield group, nor are they necessarily endorsed by the Editor or Publisher.

### Advertising...

If you wish to advertise in Window on Wakefield, please make contact with Genie or Lindsay on 541 9641 or email [enquiries@wakefieldprint.co.nz](mailto:enquiries@wakefieldprint.co.nz) and read the Terms and Conditions that will be provided on the rate card.

### TERMS AND CONDITIONS REGARDING PUBLISHING OF CONTENT

- a. All articles and other content submitted for publishing must disclose the author's name or where the article/content is contributed by a community group, then that community group's name.
- b. All images should be provided to us in a high quality PDF format. We take no responsibility for the quality of reproduction for images that are not supplied to us in this format.
- c. If you wish to make changes to an article or content already submitted, please ensure these are communicated to us before the relevant deadline date.
- d. When you submit an article or other content for publishing you:
  - agree that the submitted material and/or images can be reproduced by the Editor or Publisher at any time without your prior approval
  - agree that all photographs submitted for publishing are provided free of charge, and the approval to print has been obtained from any persons shown in the photo - this is the responsibility of the person submitting the photo
  - acknowledge that all material is held by us at your risk and is not insured by us. Material will only be returned on request and may otherwise be destroyed by us
  - warrant and undertake that no statement, image, representation or information contained in your supplied article or content:
    - \* is or is likely to be misleading or deceptive;
    - \* is at all defamatory, in breach of copyright, trademark or other intellectual or industrial property right;
    - \* is otherwise in breach of the Copyright Act 1994, Defamation Act 1992, or any provision of any Statute, Regulation or rule of law.
- e. We reserve the right to decline the publication of any article or any content whatsoever on any grounds that we in our absolute discretion see fit.



**Jill O'Brien**

R D 1 Wakefield  
Rural Mail Contractor  
**FOR ALL YOUR  
MAIL NEEDS**

Stamps, Parcels, Freight  
Phone 541 8963  
Mobile 027 324 2126

**DID YOUR BUSINESS  
MISS OUT THIS TIME**



**DON'T DESPAIR  
WE HAVE SAVED  
A SPOT FOR THE NEXT  
PUBLICATION  
JUST FOR YOUR BUSINESS**

**Give us a call  
541 9641  
or  
Email  
[info@wakefieldprint.co.nz](mailto:info@wakefieldprint.co.nz)**

## NEXT EDITION

**Due out the first full week of each month**

**All Advertising to be submitted by the 20th of the Month prior**

**All Content to be submitted by the 23rd of the Month prior**

**For Advertising please contact Wakefield Print Ltd 541 9641**

**For Content please contact All Accounts Matter Ltd 541 9005**



KEAS	CUBS	SCOUTS
VENTURERS	ROVERS	LEADERS
NELSON ZONE		WAKEFIELD SCOUT GROUP

**VOLUNTEERS  
NEEDED  
URGENTLY**



Scouting offers a range of flexible adult volunteering opportunities which help provide adventure and challenge for young people.

Wakefield Scout Group is looking for Leaders, Helpers and Committee Members, whatever your skills, experience and interest, we can find a role for you.

We can help you develop your skills and learn new ones, we provide you with full training and support.

You don't have to be a parent to help shape the youth of our community!

**ADVENTURE PLUS!** Wakefield Scout Group  
Phone: 027 7593 006  
Email: wsg4kids@gmail.com



## In The Bush

Over the last few months we have had a very busy time with a major job of clearing the area behind the Scout Den. A lot of large and determined weeds to dispose of and the releasing of many of the plantings. With the hard yards done the Tasman District Council will have Nelmac contract for a further 3 months to keep the weeds under control.

We have also cleared along the Eastern Boundary fence line of all weeds and sincere thanks to Simon Lloyd who is allowing us to hop the fence to his property and clear away some of the pest weeds on that side. Working in well with our close neighbours is certainly a win win for the Bush.

The lookout Hill has also been given a makeover with gorse, hawthorn and cotoneaster being cut down and sprayed to prevent any future regeneration. The numerous weeds in all the new plantings have also been dealt with.

A sincere thank you to all our volunteers and those who work outside of our usual weeding/maintenance/planting bees.

We would so appreciate having more volunteers on our phone tree, if you are new to the village or just looking to assist us, please do give me a phone call.

The commitment is just once a month (the 2nd Saturday) from 10am until noon, with good food and a cuppa afterwards.

Regards Doug South  
President Wakefield Bush  
Restoration Society Inc.  
Telephone 541 8980 Mobile 027 907 2879  
Email [tuiville@xtra.co.nz](mailto:tuiville@xtra.co.nz)



# PRETTYSMART

second hand clothing

# SALE

A great chance to buy and sell quality baby, children and adults' used clothing, shoes, toys and baby gear at bargain prices.

**When: Saturday 11 March 2017  
9:00am - 2:00pm**

**Where: Stoke Memorial Hall  
Main Rd Stoke**

\$2 Entry per person or family  
CASH Sales only NO EFTPOS

**For Sellers' Bookings and Enquiries:**  
[prettysmartsale@gmail.com](mailto:prettysmartsale@gmail.com)

Txt 027 224 1001

Phone: 539 4561 or 541 9606

**Find and like us on Facebook**



Pretty Smart is totally non-profit



## NOW OPEN

# The Elegant Frog



VINTAGE & CURIOS

10 Clifford Road (State Highway 6)  
Wakefield 7025

Brother and sister, Diana and John Wilkins both recent Wakefield residents have joined forces and expertise to bring a new store to Wakefield. Specialising in Vintage up cycled furniture and furnishings, also on offer, an unique range of new and vintage giftware.

Opening hours  
Tuesday to Sunday 9.30am - 5.30pm

# Wakefield School

## Wakefield School students can't help being fit and healthy

by Peter Verstappen

One of the things we appreciate about Wakefield School is the fabulous natural environment – an irresistible invitation to children to play, explore, be active and creative. From the massive sandpit to the bush-covered bank, the indoor swimming pool and new all-weather games surface, it takes a truly dedicated couch potato to avoid being fit and active.

This year we welcome a couple of new initiatives to promote our children's health, and the return of some familiar favourites. New at Wakefield is the Fonterra Milk in Schools programme. Thanks to Fonterra our children enjoy free delicious milk served chilled from the fridge. It's simple to manage, hugely popular and nourishing.

We have welcomed NCLI back to school - No Child Left Inside. This fantastic fitness programme for junior children is the brainchild of local man Matt Watson (you can see more here: <https://www.facebook.com/nclinz/>) and in just a few years has become a fixture in many Nelson/Tasman schools. Our instructor this year, Taryn Pinkerton, spends every Monday at school taking lessons for all the junior classes. Amazingly, NCLI is free and runs all year - big thanks to all their sponsors.

The swimming pool is once again the hub of the community during these warm days. A visiting teacher from the North Island recently watched some of our children swimming and was stunned by how good they are. "At my school we struggled to get 12 and 13 year old children to swim a length and here I was watching 8 and 9 year olds swimming multiple lengths in all different strokes. One girl was even doing butterfly!" It's good to be reminded of how capable our children are in the water, and how lucky we are to have the pool.

We also welcome the Riwaka Brooklyn Gymnastics Club to Wakefield School in 2017. RBGC has picked up the Wednesday gym club, running classes for our students during school time and after school classes for a big group of enthusiastic gymnasts.

On Friday 17 February we held a special event to mark the completion of our major grounds development project that combines upgraded drainage with new play spaces, shade sails and paving. The event was attended by our contractors, volunteers and major sponsors, and all agreed it's been a smooth and exciting project to be part of. Next on the planning board is a new obstacle course! Oh, and a bike pump track that a determined group of boys are quietly creating under the oak trees. And sometimes that's just how learning happens...

## Wakefield School – 175 years old

Yes, 2018 will be the 175th anniversary of the founding of Wakefield School. From humble beginnings in Mary Ann Baigent's cottage in 1843 to our thriving 21st century school today there has always been a school on Edward Street, making us the oldest continuous school in New Zealand and so the first to celebrate our 175th jubilee.

A small group of past students and current staff met recently to start planning how to celebrate this important milestone. We think it will be a popular occasion and we're looking for good ideas and a few more keen people to join our planning team.

One of our big tasks will be to get the message out to as many former students and supporters of the school as we can, so if you're reading this and know somebody who will want to attend make sure you pass on the message. At this stage we don't have a firm date but it will likely be October-November 2018 and inquiries to register are welcome at any time. Contact the school office by phone on 03 541 8332, by email to: [admin@wakefield.school.nz](mailto:admin@wakefield.school.nz) and find us on Facebook: <https://www.facebook.com/wakefieldschool/>

Do you want to be part of the organizing team? Then contact the school office and join us at our next meeting: Wednesday 15 March, 7.00pm in the school staff room.

## Wakefield School PTA AGM

20th March 7pm at the school staffroom.

All welcome, we will have our normal PTA meeting after AGM  
Come along and join in the fantastic things the PTA do for your school



First day student Asher Robinson cuts the ribbon to open the new playground, helped by Lees Seymour of Nelson Forests Ltd and Anne Malham of the Wakefield School PTA.



**FRIDGES • FREEZERS**  
**WASHERS • DRYERS**  
**DISHWASHERS • OVENS**  
**RANGEHOODS**

## WHITEWARE SOLUTIONS LTD

For all your whiteware repairs in  
Wakefield, Richmond and the  
surrounding areas.

**TIM LLOYD**  
79 Treeton Place,  
Wakefield.

For service call: **027 685 5777** or **541 8877**

# The Way We Were

## 175 Years of European Settlement in Nelson 1842-2017 - Why did they come?

*Prepared for the Waimea South Historical Society by Roger Batt*

Edward Gibbon Wakefield's plan for the colonisation of New Zealand – to create a “little Britain” in the South Pacific depended on the transplantation of a cross section of English society from the beginning.

There was a need for wealthy entrepreneurs to buy land, set up businesses, employ workers, provide transport, goods and services which would run an industrial society similar to that existing in England but without (hopefully) many of the defects. And without the workers (mainly agricultural at first), cooks, cleaners, shop assistants, blacksmiths, farriers, housemaids...Victorian society would find it difficult to function.

So the people who filled the first 4 ships that entered Nelson Haven on 1 February 1842 were a mixed lot. On the Fifeshire there were: 20 cabin passengers (those who could afford to pay for their fare), 52 emigrants (those whose passage was “assisted” i.e., paid by the Company) and 63 children up to the age of 13yrs. Overall there were:

Surveyors (2)	Farmers (1)	Printers (1)	Gentlemen (1)
Millers (1)	Surgeons (1)	Carpenters (6)	Farm Labourers (5)
Smiths & Farriers (1)	Agric. Labourers (14)	Servants (7)	Masons (1)
Tailors (2)	Nurses (1)	Machine Fitters (1)	Stone Masons (1)
Brick-makers (1)	Millwright & Engineers (2)	Tin, Coppersmith & Flax Dressers (1)	Blacksmith (2)
Seamstresses (3)	Bricklayers (2)	Sawyers (1)	Gardeners (1)
Shoemakers (1)			

They all came for different reasons but the overriding driving force was to “better themselves” in a new and pristine environment where the opportunity to make their own way far from the overcrowded lands of the old country would have seemed endless.

And Britain at that time was overcrowded. “In the first half of the nineteenth century the population of England doubled. By 1851 London, from which so many of the emigrant ships sailed, had almost 3 million people – more than twice the size of Paris.” Many agricultural workers had been forced off their small plots by the increasing move by landowners to “enclose” common land over which no title could be proved. The Irish potato famine forced people to look for work in the industrial towns or overseas and in Scotland the “Clearances” had the same effect as the enclosures.

With Britain leading the way in the Industrial Revolution following the development of the power of steam to drive machinery producing cloth and other items using raw material for all over the Empire, London and the northern cities suffered badly from air and water pollution in an unregulated environment. With the abundant coal reserves, “there was a corresponding increase in coal fires which from late autumn to spring, created a pall of dark smoke that extended for almost thirty miles across the city, making London two to three degrees warmer than the surrounding countryside.

Sometimes the fog was so bad that it would bring the Thames shipping to a stop....the emigrant ship Mongol was delayed for 5 days in December 1873 by ‘one of the heaviest fogs that had visited London for years’.” Not only air but water pollution was widespread. “In the 1860's London's sixty central sewers were flushing some 260 tons of raw sewage directly into the Thames every day.” As the river was tidal, this was not continuously being swept away and so the smell of sewage on the muddy banks was a continual presence. And people used the river for drinking water. On the emigrant vessel Theresa bound for New Plymouth Frederick Weld was told that this water was “quite wholesome and that...it would ferment and so work off any impurities, and then keep forever.”

Cesspools, “under the houses if not cleaned regularly would overflow and further contaminate the water supply which if it was piped would only be to a street hand pump. If you lived in a good area there might be several pumps in the street but otherwise only one for about 30 households. It is unsurprising then, that cholera and typhoid fever outbreaks were common.

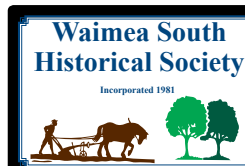
The most vulnerable to these water borne diseases were children. Diarrhoea, whooping cough and measles all added to their likelihood of an early death. In the 1830's the death toll for children under the age of 5 was 15%.



<http://manojranaweera.me/2014/10/10/from-industrial-revolution-to-fintech-and-how>



A woman ‘sells’ her son to a chimney-sweep. He will work as a ‘climbing-boy’ cleaning chimneys.  
[http://www.oldpolicecellsmuseum.org.uk/page/life\\_in\\_the\\_19th\\_century\\_england](http://www.oldpolicecellsmuseum.org.uk/page/life_in_the_19th_century_england) (David Rowland)



Explore the  
past with us

[www.waisouth.wordpress.com](http://www.waisouth.wordpress.com)

## 175 Years of European Settlement in Nelson 1842-2017 - Why did they come? cont

"In 1831 Britain had its first cholera epidemic when the dreaded disease arrived from India...It killed 52,000 people with a greater effect in poorer areas...This was followed by an outbreak of scarlet fever in 1834 which killed another 50,000. There were further outbreaks of cholera in 1848-49 and in 1853-4 and this continuing threat would have been a factor in persuading many people to emigrate" - despite a 3-5 month voyage on a cramped ship which often resulted in the deaths of many children, (notably the Lloyds which lost 65 children to whooping cough.) However, at journey's end was a land of "blue skies instead of fog, water from pristine streams...and stand-alone houses on land that they would own instead of the overcrowded, jerry built tenements of Birmingham Holborn and the East End. Some of these back to back houses had only one thickness of brick between units and, in some cases, more than one family shared a room."

And we must not overlook the work of the New Zealand Company agents who, in 52 strategic towns and cities of the British Isles ...circulated glowing accounts of New Zealand, each receiving a commission of forty shillings (approx. NZ\$287 current buying power) for every married couple, and ten shillings (approx.. NZ\$71.00) for every unmarried adult whom they managed to enrol in the Company's books. This inducement unfortunately led in some cases to unwarranted promises and the colony



Outhouse toilets were shared. In Manchester there were 2 privies for every 250 people in the 1850's. Instead of privies, there was often a tub that required daily emptying. Seven thousand people were supplied with about 30 of these tubs. <http://sphweb.bumc.bu.edu/otfl/>



Working class families generally had no running water or toilet. Water was obtained from community pumps but these were sometimes contaminated with sewage. <http://sphweb.bumc.bu.edu/otfl/m>

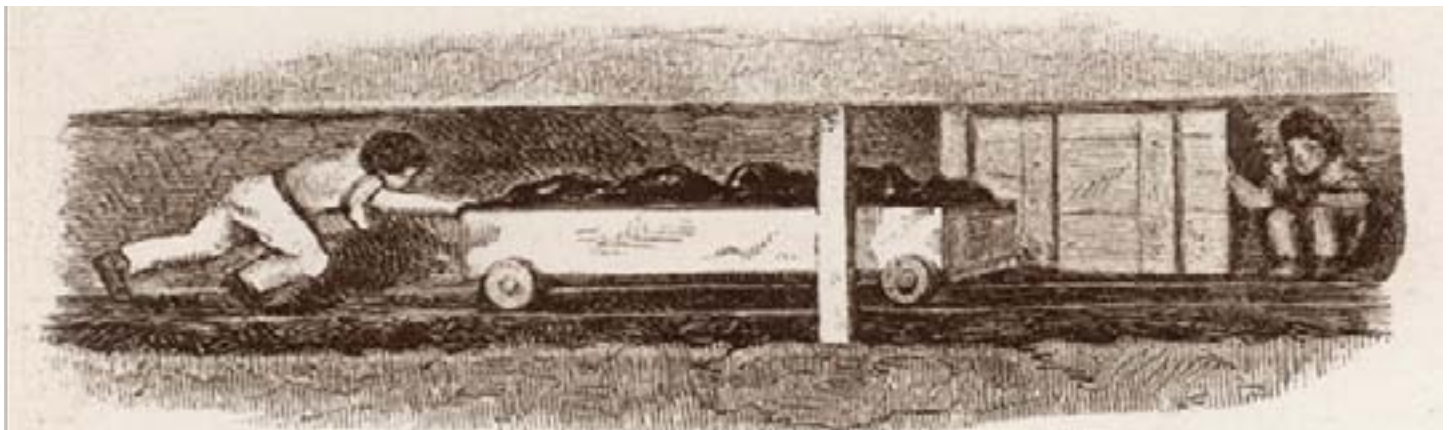
being painted in "glowing but false colours." These accounts were almost impossible to verify by the prospective applicants and may account for the panic which ensued in Nelson after the Wairau Incident and the return of some colonists to Britain.

For a while in towns like Auckland and Wellington conditions were as grim as those back home. "In a letter to Auckland's New Zealander newspaper on 10th November 1855, a newly arrived immigrant wrote, 'Queen Street has a beautifully wide thoroughfare with a costly Macadamised roadway in the centre...on one side an imperfectly covered ditch...on the other...a species of Slough of Despond...I have seen huge lumps of offal meat in all stages of decomposition - decayed vegetable matter - and ordure of the most disgusting kind.'" But things would improve and after all the sun shone, the sky was blue and the sea air still remained fresh and clean.

### Acknowledgements:

McLean, John Voyages of the Pioneers to New Zealand 1839-85 Winter Productions 2015 ISBN 1-872970 40 0 Chapters 1 and 2 of which have provided much useful material.

Clegg, R. J. From Hampshire to Wai-iti self-published, 1966, ISBN 0-473-04026-3  
Neale, June E. Landfall Nelson by Sailing Ship 1642-1842 Anchor Press 1978.



### CHILD-LABOUR IN COAL-MINES OF THE 'FORTIES: A LITTLE "TRAPPER" (ON RIGHT) OPENING AN AIR-DOOR FOR A TRUCK TO PASS THROUGH.

"The trappers sit with a string attached to the door, and pull it open the moment they hear the corves (coal-trucks) at hand, and the moment one has passed they let the door fall to. . . . They are in the pit the whole time it is worked, frequently above twelve hours a day. They sit, moreover, in the dark."

All the Illustrations on this page and the extracts accompanying them are reproduced from woodcuts and an article in "The Cyclopaedia of Useful Arts" (1840-5).

[http://www.bbc.co.uk/schools/primaryhistory/victorian\\_britain/children\\_in\\_coal\\_mines/](http://www.bbc.co.uk/schools/primaryhistory/victorian_britain/children_in_coal_mines/)

# The Way We Were

## HISTORY BOOK OF NELSON FOUNDING FAMILY TO BE RELEASED IN MAY THIS YEAR

A heritage book tracing the history of one of Nelson's first founding families, is set for release in May this year.

"The Webby Family – tracing the history of one of Nelson's founding families" has been written by journalist and family member Jacquie Webby, whose grandfather Howard was a grandson of Edward Whibbey/Webby, who settled in 88 Valley, Wakefield, Nelson.

"This is the first time the history of Edward and Mary Webby, who arrived in Nelson in 1841 aboard the Whitby and the Lloyds respectively, has been compiled into a formal publication," Miss Webby says.

"Edward and Mary, who emigrated from their native Somerset in England, where the lineage traces from the early 1700s, had three children prior to leaving England. Two of their sons were among those lost on the ill-fated Lloyds during the journey to Nelson. Another son died prior to leaving England.

"Their surname was spelt Whibbey on their English birth, baptismal and marriage documents and also on emigration documentation, but for some unknown reason, it was changed to Webby when they arrived in Nelson," Miss Webby says. The new emigrants were granted land under the New Zealand Company scheme in 88 Valley, and it was there they raised another 11 children.

"The history of the Webby Family is closely linked to the region," Miss Webby said. "They were successful farmers, attended 88 Valley (Koreke) School, built roads, ran businesses including taxis, served on local bodies, did road making and operated harvesting and threshing equipment. Webby Place in Richmond was named after George Webby, one of Edward and Mary's sons and the Webby traction engine, which was on its delivery journey in 1902, is famous for falling through a bridge at Smith's Creek, midway between Stoke and Richmond".

According to Miss Webby, Edward Webby also built a timber sided and cob building at Beacon Hill, Hope, parts of which have been incorporated into the larger and current Beacon Hill homestead. Another Webby link is Webby's Cottage, built by Alf Webby, which still stands in 88 Valley.

The Whibbey/Webby names are also found on the commemorative Settlers Wall at Port Nelson and headstones for Edward and Mary have recently been placed on their grave sites at Richmond Cemetery.

In Nelson and Marlborough, the Webby family is linked to the Snowdons through the marriage of daughter Eliza; the Suttons, through the marriage of daughter Mary Ann; the Busch family, through the marriage of John Webby, the eldest New Zealand-born son; the Harmans through the marriage of son Edward Webby; the Kruse Family via son Frederick's marriage to Henrietta Kruse; and, the Castle family through Edward's son Charles' marriage to Mary Castle and daughter Emily's marriage to George Castle.

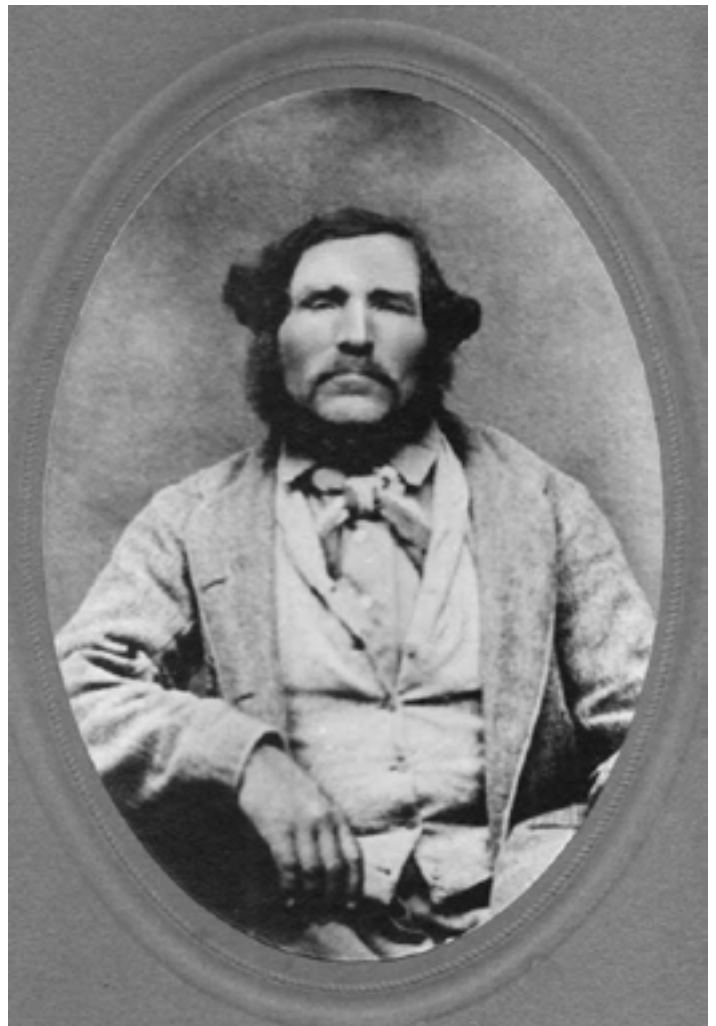
There are also strong links with the West Coast, through the marriage of Charlotte Webby with William Kearns, who ran a very successful transport business. Several family members of the original settlers later shifted to Taranaki where they established their own dynasties, before spreading to the Waikato and Bay of Plenty.

"I have written the book not only to record the heritage history of this original founding family but to reproduce material, including photography, most of which has not been seen before outside the applicable family members," Miss Webby said. "With such large families, there has been a vast amount of research, photography search and checking and rechecking facts and stories. The book has occupied more than two years of solid work.

"I hope everyone who buys a copy will enjoy the book and it will become an often-referred to publication for both immediate and wider family members in years to come," she said.

The book is available for purchase from the author/researcher at \$40 plus postage, email: [jacquiwebby@gmail.com](mailto:jacquiwebby@gmail.com) or by writing to 30A Hull Street, South Hill, Oamaru, 9400.

For further details please contact:  
Jacquie Webby  
30A Hull Street  
South Hill  
Oamaru 9400  
Telephone 03 434 2530  
Cell: 0274 769 750  
Email: [jacquiwebby@gmail.com](mailto:jacquiwebby@gmail.com)



# Wakefield Volunteer Fire Brigade

The year is marching on and the seasons don't seem to be what I think they should be. With long dry grass and the steady winds we are still having, we all must be very careful with machinery, garden rubbish fires and open fires. We do not want another Christchurch Port Hills fire around our district which could happen very easily with the conditions we have currently experiencing.

As you can see from the below calls Motor Vehicle Accidents (MVA) at this time of year are on the rise with most accident being minor accidents so far so please take care on the roads because we all know our traffic density is growing and it does take longer to go from A to B so plan to take extra time getting there and please be patient.

If a fire does start and the winds are present, the fire will travel very quickly and spread very quickly in size so please take care.

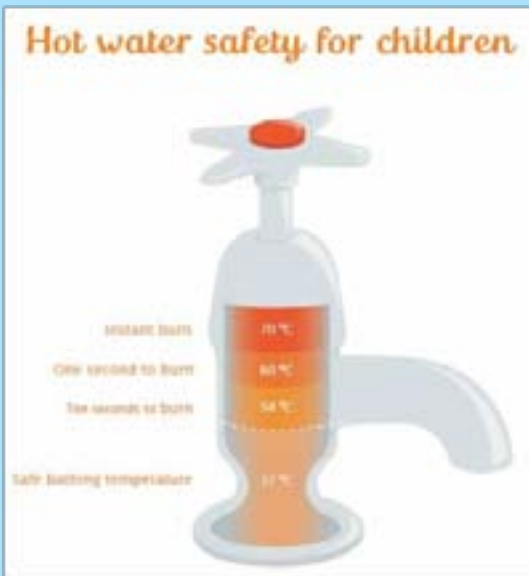
If you need to have an open fire burning you must get a fire permit from Rural Fire Network in Richmond or call them 544 2441.

As always take care and be safe  
Fritz Buckendahl  
CFO Wakefield

## Callouts this month

MVA	Hope Saddle
MVA	Motueka Valley
Shed fire	Dovedale
Medical	St Aranud
MVA	Hope Saddle
Medical	St Aranud
MVA	Spring Gove

Yearly total so far 22



- Learn First Aid.
- Keep children out of the kitchen or cooking areas during meal preparation.
- Keep kettles, jugs and teapots away from the edge of benches and tables.
- Turn saucepan handles away from the stove-front. If possible, use the rear hot plates on the stove, rather than the front ones.
- Ensure all upright stoves are securely fastened to the wall and oven doors are closed.
- If you do get burnt, put the affected area under cold, running water for a minimum of 10 minutes.



Felbridge Cottage  
6 Pittfure Road, Wakefield

Available throughout the year  
for short or long stays.  
Phone Phill and Brenda  
03 541 9520  
[www.felbridge.co.nz](http://www.felbridge.co.nz)

## Delicious Honey straight from the valley

Mountain Valley Honey brings you award winning honeys, harvested from the beautiful Marlborough Sounds and stunning remote areas of the top of the South Island. Our bees forage to bring you Manuka, Native Bush, Autumn Gold, Honeydew and Kamahi honeys to enchant your tastebuds.

Find us at: [www.mountainvalleyhoney.co.nz](http://www.mountainvalleyhoney.co.nz)  
Email: [info@mountainvalleyhoney.co.nz](mailto:info@mountainvalleyhoney.co.nz)  
Visit us: Every Saturday at the Nelson Market





# REACH YOUR HEALTH GOALS

Your friendly community Chiropractors are here to help you and your family reach your health goals

X-rays onsite, ACC registered  
Experienced with sport and work injuries, performance enhancement and whole family care (0-100 years)



Call 03 544 4554 Monday - Saturday  
Tasman Bay Chiropractic, 64 Oxford Street Richmond  
[www.tasmanbaychiropractic.co.nz](http://www.tasmanbaychiropractic.co.nz)

# southfuels Spring Grove

Everytime you fuel up at Southfuels Spring Grove the School benefits, so fuel up to help your school.



Every time you fuel up 1 cent for every 2 litres purchased goes back to the school by way of a Southfuels Donation

Thanks to you  
Wakefield School have received  
4 new chrome books



24/7 Outdoor Payment Terminal  
Available with all eftpos, z card, major credit cards



Ph **541 8444**  
Fax 541 8445  
Main Rd North  
Wakefield, Nelson  
[springgrove@xtra.co.nz](mailto:springgrove@xtra.co.nz)

## Admire Nails & Beauty

Feather Touch Cosmetic Tattoo  
Coming in April 2017



Are your Eyebrows thin, or you're not quite happy with the shape?

Do you want brows that look great for 12-18 months, maybe longer?

3D Feather touch brows give the effect of fine and delicate hairstrokes, that mimic the natural hair. This enables us to create fuller and longer brows if required.

\*Powder Brows \*Feather Touch Brows \*Combination Brows \*Ombre Brows

\$350 including 6 weekly touch up appointment available for the first 6 bookings!! Normally from \$475

Cheryl Roach  
Qualified Beauty Therapist

Phone 03 541 8345  
or 027 537 9600

## Wakefield School & Community Cookbook

2016

If you haven't picked up your copy of the Wakefield School and Community Cookbook, then make sure you don't miss out!

Available from Wakefield Pharmacy, Wakefield Bistro and of course from Wakefield School office during school hours or email [ptawakefield@gmail.com](mailto:ptawakefield@gmail.com) to contact a member of the PTA.

If you are a parent or grandparent of the school you may also be interested in the Wakefield School teatowel that has been produced - it contains a caricature of all the children and staff of Wakefield School in 2016.



Wakefield School and  
Community Cookbook \$20  
Tea towel \$8  
Package deal [one of each] \$25

# Wakefield Apple Fair

## LOOK OUT! WAKEFIELD APPLE FAIR APPROACHING!

As summer slides into harvest season a small group of Wakefield residents and supporters are thinking about apples and, in particular, the annual Wakefield Apple Fair.

The Apple Fair happens on Sunday 23 April, 11.00am – 3.30pm, at the beautiful and unique setting of Willow Bank, Wakefield's historic village and home of Christine Grieder.

From small beginnings in 2014 the Apple Fair is now established in the Nelson/Tasman events calendar, with more than 1,500 people enjoying last year's event and the 2017 Apple Fair promising to be even bigger.

Yet the organisers are determined that the Fair will retain the relaxed charm of a traditional country fete and a true community event, so they are once again offering local community groups the opportunity to run a fundraising stall.

If your group or organization wants to tap into a ready crowd, and you've got some good ideas for making and selling food and drinks, you are encouraged to book a space for a stall at this year's Apple Fair.

If you'd like to be part of the action contact Christine on 541 8595, or by email to: willowbank2002@gmail.com

And don't forget to save your apples for juicing at the Apple Fair. Don't have your own apples? Don't worry, there will again be lots of free apples kindly donated by Hoddy's orchard.

The Wakefield Apple Fair, Sunday 23 April – mark it on your calendar now.



# A Free Family Event



## SUNDAY 23RD APRIL 11.30-3.30PM TURN YOUR HARVEST APPLES INTO JUICE!

### COME & HAVE LUNCH LIVE MUSIC | FOOD & DRINK CHILDRENS ACTIVITIES & GAMES,

WILLOW BANK HERITAGE VILLAGE, 79 WAKEFIELD KOHATU HIGHWAY  
(JUST SOUTH OF WAKEFIELD ON THE MAIN ROAD)



**Kate West** NZRP, BPhy

Accident & Sports Injuries  
Neck & Back Pain  
Vestibular Rehab

All Sprains & Strains  
Pre/ Post Surgical rehab

ACC & PRIVATE TREATMENTS

**03 541 8911**

At the **WAKEFIELD HEALTH CENTRE** 12 Edward Street, Wakefield

info@wakefieldphysiotherapy.co.nz

www.wakefieldphysiotherapy.co.nz

# On The Beat

Hi everyone,

I know it's a bit late but I trust you all had an enjoyable Christmas and New Year's holiday period. I managed to get away for a couple of weeks and spent some time up in the North Island with my wife and her family.

I am happy to report that we have not had a serious injury or fatal crash in the Wakefield area over the holiday period. This is fantastic news and great to see that the message of road safety is getting across. This is even more significant considering we have had four times the amount of traffic on State Highway 6 since the Kaikoura earthquake. I would like to congratulate you all as road users and keep up the good work.

Having said that it is important to remember that the increase in traffic means extra patience is required on the road and leaving extra time for your travel especially in peak times. Should you see any dangerous driving out on the road be sure to call \*555 at the time (if possible and safe to do so). This gives us a greater chance to deal with the driver at the time and hopefully prevent it from happening in the future.

There have been several forestry burglaries reported to us recently with various equipment taken. This is very disappointing to hear and extremely frustrating for forestry crews to have to put up with. If you have seen or heard anything regarding these burglaries (no matter how insignificant you may think it is) please be sure to get in touch with us. If you see anything suspicious happening in the forestry areas which you think doesn't seem right make sure you let us know. You can either call 111 (if it is in progress), call in to the station or call CRIMESTOPPERS anonymously on 0800 555 111. I have had some success recently locating and prosecuting offenders from both forestry and rural burglaries and the information that we receive from locals can be of significant help to us.

Enjoy the rest of the summer and take care of each other.

Jamie White  
Wakefield Police



## Wakefield Health Centre

Like many GP Practices across the country, we offer ManageMyHealth™ to our patients.

ManageMyHealth is a secure website (and app) which receives an individual's personal health information uploaded from their doctor. It can also be used to store other health-related information which may not be recorded, such as other treatments you have received, or other medications that you may be taking. It allows access to your personal health information from any internet device at anytime, anywhere in the world.

### What are the main Benefits?

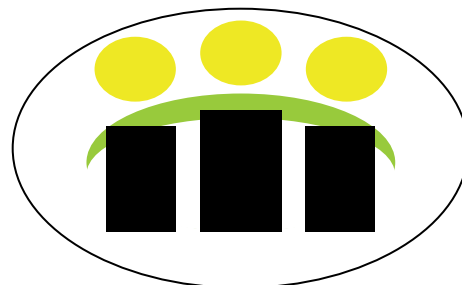
ManageMyHealth™ is an online service that gives you:

- The ability to make GP appointments online
- Access to lab results, immunisation records etc
- The ability to request repeat prescriptions
- The ability to send your GP a secure message

ManageMyHealth™ is available to you right now. All you need to do is ask at reception.

The registration process is quick and easy but it does need to be done at the surgery. This is to ensure that we are giving the information to the right person – and we will ask to see a Driver's License or other form of ID when we sign you up.

If taking control of your health is important to you, ManageMyHealth may be a great tool to help you do it. Ask us about it next time you are here.



## Wakefield Health Centre

Surgery hours:

Monday to Friday 8am – 5:30pm

Wednesday 8am – 7pm

**New Enrolments Welcome**

**Phone 541 8911**

**12 Edward St Wakefield**



**\$5 OFF** **\$5 OFF** **\$5 OFF** **\$5 OFF** **\$5 OFF**

**IN STORE CRAFTED GOURMET PIZZAS**

**Now Available at Wakefield 4 Square**



**Valid March 2017**

**FRESH OYSTERS**



**AVAILABLE AT WAKEFIELD NOW**  
subject to weather and availability



**Open 8am - 8pm 7 days per week**




**\*Planting and re vegetation projects**  
**\*Landscaping projects**  
**\*Arborist work**  
**\*Tree felling**  
**\*Hedge trimming**  
**\*Shrub cutting and gorse control**  
**\*And much more green care of your property**

This is done by a trained arborist and nurseryman with many years of experience in plant production and the landscape business

**contact MORTEN for a free quote**  
**Ph: 021 206 9914 or 541 86 85**  
**email: mortenlausen@gmail.com**

**Full insurance cover while all work is being done**

**Fighting for a fairer future.**



**Damien O'Connor**  
 MP West Coast/Tasman



**free phone 0800 326 436**  
 234 High Street, Motueka | Phone 03 528 8190

**f damienoconnormp**

Authorised by Damien O'Connor. 208A Palmerston St, Wsp.



# Quiz

## MARCH'S QUESTIONS

1. What liqueur bearing the letters D.O.M. on the bottle label was developed at Fecamp, France, in the 16th century?
2. What have been cooked in syrup and glazed to make the sweetmeat Marrons Glaces?
3. Which 17th century explorer was buried with a pipe and a box of tobacco?
4. Who composed the music entitled Wedding March?
5. In which bay is Alcatraz?
6. Which Cornish village claims to be the birthplace of King Arthur?
7. What is an otter's home called?
8. In Roman mythology, Neptune is the equivalent to which Greek god?
9. What is the other name for Wildebeest?
10. What is the name given to a locked case in which decanters can be seen but not used?

## ANSWERS FROM THE QUIZ FROM LAST MONTH

1. Where is the North Pole?  
*The Arctic Ocean*
2. What is the capital of Australia?  
*Canberra*
3. A British 50p coin has how many sides?  
*Seven*
4. What is the longest river in the world called?  
*The Nile*
5. Where is Father Christmas originally from?  
  
*The legend of Santa Claus can be traced back hundreds of years to a monk named St. Nicholas. It is believed that Nicholas was born sometime around 280 A.D. in Patara, near Myra in modern-day Turkey.*
6. Which country is known as the Land of the Rising Sun?  
*Japan*
7. What in Cornwall is the most southerly point of mainland Britain?  
*Lizard Point*
8. How many bones is the human face made up of?  
*Fourteen*
9. How many arms/tentacles/limbs does a squid have?  
*Ten*
10. What is the word used to describe an animal/plant that is both male and female?  
*Hermaphrodite*



## Digger For Hire



**6 Tonne digger  
Dry hire or with  
Experienced Operator**

**Call:**

**Richard Winn  
0274 362 897  
AH: 541 9567**

**Can we celebrate your special  
event or help remember  
someone dear to you?**

**Please send your obituaries,  
birth announcements,  
wedding stories,  
other celebration  
notices to us at**

**[windowonwakefield@gmail.com](mailto:windowonwakefield@gmail.com)  
or ring 541 9005**

## Painter



**Interior, Exterior  
& Wallpapering**

**For a Free Quote  
Phone Peter Thompson  
027 444 93 64  
A/H 03 541 9678**

**62 Whitby Rd Wakefield**

# A Matter of Accounts

by Sonia Emerson, CA, BBus

## PREPARING FOR END OF TAX YEAR

**No, it's not a misprint, this article is the same as last month, reprinted for those of you who missed last month's article and who haven't yet started preparing for the end of the financial year.**

Well the end of the tax year is drawing close, and you may be starting to think about making sure that you have all of your information available for your Accountant to complete your end of year accounts and file your tax returns.

If you are using accounting software, I suggest that you:

- Make sure all of your bank transactions have been entered and finalized
- Reconcile your bank accounts to 31st March
- Perform a review of your general ledger entries to look for miscoded items and other potential errors
- Take a back up of your software once you have finished entering everything and reviewing and store it somewhere safe. Do this before you rollover the financial year if your software requires a rollover.

Your Accountant may have slightly different requirements, and many will send you a checklist to assist with compilation of your documents, but here are some suggestions for the type of paperwork to get together for your Accountant:

- Bank Statements – for all accounts that cover the full period ie 1st April 2016 to 31st March 2017 inclusive. This is important, specially if your bank statements don't necessarily start on the 1st of each month.
- Loan Statements – if you have borrowing, make sure you provide the statements which show the transactions, repayments, interest added and closing balances as at balance date
- Resident Withholding Tax certificates – often sent out by banks two or three weeks into April
- Dividend Statements – if you received any dividend income during the year
- Stock on hand or cash on hand – perform a stocktake or count, as at 31st March.

This should be at cost, not retail. For livestock, it will be simply a count of the physical stock numbers, with no value associated.

- Copies of GST and PAYE returns that have been filed during the year and working papers that were used to prepare these returns
- A list of invoices that you have sent out but that haven't been paid including the amounts outstanding – your outstanding debtors
- A list of the invoices that you have received but haven't yet paid including the amounts you owe – your outstanding creditors
- A vehicle logbook if you needed to complete one
- Home office expense information eg interest on your mortgage, telephone, power, rates etc

You also need to think about your needs for the coming year and discuss these with your Accountant. Give your Accountant as much information as you can – let them know:

- What has changed, how do you want to go forward for the next year, is business likely to improve, stay the same, or are you forecasting a decline?
- Has your home situation changed? Have you now got children, partner stopped work or working in the business more?

Remember, the more information that you can provide to your Accountant, the less chasing around they have to do, the easier it will be for them, and therefore the less additional cost you are likely to incur.



## All Accounts Matter Ltd

For All Your Accounting and Tax Needs



**Sonia Emerson**  
Chartered Accountant

Mobile: 021 221 1009  
74 Whitby Road, Wakefield 7025  
Phone: 03 541 9005 Fax: 03 541 9305  
Email: [allaccountsmatter@gmail.com](mailto:allaccountsmatter@gmail.com)

# Town and Country Talk

by Brenda Halliwell

## LIVESTOCK POISONINGS

We don't often see poisonings in our farm animals but when we do it can be dramatic.

Occasionally we see lead poisoning when cattle lick old lead paint off sheds and barns, or arsenic poisoning when cattle lick treated timber. Overdosing with drenches will cause poisoning. Ryegrass staggers and facial eczema are types of toxicity. Nitrate poisoning occurs when nitrate levels in plants are high after frost or drought. But many poisonings occur when livestock eat plants that are toxic.

Poisonous plants can be tricky to manage. Plants that are poisonous for one species may not affect others. And it may only be one part of a plant that is poisonous, or a plant may only be poisonous at a certain time of year.

Poisoning can be low grade resulting in inappetence and loss of condition.

Others will cause obvious symptoms such as lethargy, diarrhoea, bloat, mouth blisters, bloody urine. But there are several plants that can cause sudden death! Oleander, foxglove and rhododendron are often lethal.



Poisonous plants tend to be more of a problem when pasture is low and livestock are forced to eat other plants. Avoid dumping garden waste where stock can get to it. Check fencelines and hedges to see what plants are in reach, and for overhanging branches.

Common poisonous plants for each species (in no particular order):

**Cattle** – foxglove, bracken, some species of buttercup, hemlock, lupin, macrocarpa and pine, ngaio, poroporo, oak (unripe acorns especially), oleander, privet, ragwort, rhododendron, tutu, yew, milk thistle, delphinium, lantana, ragwort

**Sheep** – bracken, lupin, ngaio, oak, oleander, poroporo, ragwort, rhododendron, tutu, yew, lantana

**Goats** – yew, rhododendron, bay/laurel, foxglove, hemlock, oak, arum lily, box (buxus), green potatoes, lupin, delphinium, lantana, oleander, some species of buttercup, ragwort

**Deer** – oak/acorns

**Horses** – box, arum lily, bracken, lupin, tree nettle, privet, ragwort, ngaio, lantana, oleander, some species of buttercup

This list is not exhaustive. If you have any livestock on your property, it pays to be able to identify all the plants listed above and any others they have access to. There is plenty of help online for identifying plants or bring a sample in for us to check.



*"...for all creatures great & small..."*

**Open Monday - Thursday 8.30-5pm**

**Consulting Hours**

**Monday afternoon with Brenda**

**Tuesday morning with Brenda**

**Thursday morning with Paula**

**Ph 541 8974**

**info@tcvet.co.nz \* www.tcvet.co.nz**

**Edward Street, Wakefield**

**Head office 35 McGlashen Avenue, Richmond**



**544 1200 24 hours**

FIX UP  
SET UP  
BACK UP  
CLEAN UP  
TABLETS &  
COMPUTERS

**mObile  
Computing**

In Nelson  
since  
1997

**548 1787  
027 224 0955**

**Fran's the Man!**  
fran@mobilecomputing.co.nz

**Still no call-out fee &  
we still come to you.**



**Carter  
& Sons Concrete**

**SPECIALISING IN  
SOLUTIONS FOR ALL  
BUDGETS AND NEEDS**

**Give Sam from Carter & Sons  
Concrete a call for a free Quote  
and Assessment  
on 0275-811-621.**

**CALL TODAY!!**

**Proud to Sponsor  
Wakefield Football Club**



Local Professional  
Hairdressing Services  
Natural Products  
Hair Accessories



Anne Malham

Ph: 03-541 9107  
Txt: 027 844 6769  
Facebook/Anne's Hairspace  
Email: anne.hairspace@gmail.com

14a Martin Avenue  
Wakefield  
Nelson 7025

**MAUREEN PUGH**  
NATIONAL LIST MP BASED IN  
WEST COAST-TASMAN



*I am always happy to help*

p. 0800 MAUREEN | w. [www.maureenpugh.co.nz](http://www.maureenpugh.co.nz)  
e. [maureenpughmp@parliament.govt.nz](mailto:maureenpughmp@parliament.govt.nz)

Funded by the Parliamentary Service and authorised  
by Maureen Pugh, Parliament Buildings, Wellington

**National**  
www.national.org.nz



**Craig Smart**

**CONTRACTING LTD**

**DIGGERS & TRUCK WORK**

- Landscaping - Topsoil Screening
- Root Raking - Site Clearing
- Driveways - Gravel Supplies
- Trenching - Posthole Boring

**541 9626 or 0274 440 441**

**Now available: MOBILE TOPSOIL SCREENER**  
*We will screen your topsoil on site.*



**Gardiner  
Building**



**Contractors**

**NEW HOMES \* ALTERATIONS**

[gbc.ltd@xtra.co.nz](mailto:gbc.ltd@xtra.co.nz)

*Daytime* **0274 840 719**

*After Hours* **03 541 8482**

[www.gardinerbuildingcontractors.co.nz](http://www.gardinerbuildingcontractors.co.nz)



**WAKEFIELD AUTO SERVICES LTD**

**Does your vehicle need  
some attention?**



**We'll make sure  
you're good  
to go!**

Your friendly local for  
all your automotive  
needs including:

- **WOF'S** (Cars, Caravans, Motorbikes, Trailers & Tractors)
- **Wheel Alignments & Tyres**
- **All Vehicle Servicing & Repairs**
- **Petrol, Diesel & LPG**



**WAKEFIELD AUTO SERVICES LTD**

67 Whitby Road, Wakefield  
Phone 541 8121

**ENJOY THE JOURNEY**  **CALTEX**

*Refresh Spa*

**QUALITY PRODUCTS  
PASSIONATE PROFESSIONALS  
HAIR | NAILS | BEAUTY**

We have a new stylist and we need you to help  
with training in the following services:

Wash, treatment and straightening for \$20

Root colour (includes dry/straighten) for \$50

All over colour (includes dry/straighten) for \$70

Conditions apply. Please phone 541 9099 for  
your appointment.  
Limited spaces available.

PH: 541 9099 30 WHITBY WAY, WAKEFIELD

Find us on 



**TOWN & COUNTRY**

**VET**

*"...for all creatures great & small..."*

**Open Monday - Thursday 8.30-5pm**

**Consulting Hours**

**Monday afternoon with Brenda**

**Tuesday morning with Brenda**

**Thursday morning with Paula**

**Ph 541 8974**

**info@tcvet.co.nz \* www.tcvet.co.nz**

**Edward Street, Wakefield**

**Head office 35 McGlashen Avenue, Richmond**

**544 1200 24 hours**



## Road Safety Demonstrations in your neighbourhood

Stopping Distance Demonstrations are being held as part of a road safety campaign to show how long it takes for a car to stop when travelling at different speeds.

You, your family and your neighbours are encouraged to join in with local schools viewing these demonstrations.

**Please note:**

- Cars will be allowed into and out of the area under controlled conditions at certain times during the demonstrations.
- If you need to exit your driveway please speak to a marshall in a safety vest before exiting. This is for your own safety.
- No road side parking will be allowed during the road closure.
- Emergency services will be notified and allowed access at all times.

**For further information please contact:**

Krista Hobday, Tasman District Council on Ph. 03 543 8551 / 027 405 6888.



The following roads will be closed to traffic during these demonstrations:

- **Fairfax Street, Murchison**  
(from number 28 to the end of the road)  
Monday 3 April 2017, 9.10am – 10.55am
- **Greenhill Road, Ngatimoti**  
(from number 22 to the Motueka Valley Highway)  
Monday 3 April 2017, 1.45pm – 2.55pm
- **Wadsworth Street, Takaka**  
(from number 5 to Boundary Road)  
Tuesday 4 April 2017, 9.10am – 10.55am
- **Grey Street, Motueka**  
(from number 24 to Whakawera Street)  
Tuesday 4 April 2017, 1.25pm – 2.50pm
- **Starveall Street, Brightwater**  
(from Lord Rutherford Road North to Laura Lane)  
Wednesday 5 April 2017, 9.10am – 11.40am
- **Aniseed Valley Road, Hope**  
(from number 134 to Paton Road)  
Wednesday 5 April 2017, 1.05pm – 2.50pm
- **Goddard Road, Tasman**  
(from number 5 to number 33)  
Thursday 6 April 2017, 9.10am – 11.00am
- **School Road, Lower Moutere**  
(from number 37 to Main Road Lower Moutere)  
Thursday 6 April 2017, 1.25pm – 2.50pm
- **Church Street, Richmond**  
(Gladstone Road (SH6) to Dorset Street)  
Friday 7 April 2017, 9.15am – 11.50am
- **Iwa Street, Mapua**  
(from number 59 to the end of the road)  
Friday 7 April 2017, 1.25pm – 2.50pm

## The Victorian Willow Bank Café

### Fundraiser for our Willow Bank Heritage Village

79 Wakefield-Kohatu Highway

We will serve Victorian & Edwardian food on our monthly open days [ Destination Wakefield ]

The food served will be very seasonal, unprocessed & and mainly from our own produce.

One things for sure, plums will definitely feature on the menu on March 5th!

Please come and support us! We will be open from 10am - 3pm. You can visit 10 other locations in Wakefield at the same day.

Make Wakefield a destination on 5th March:

Steam Museum, 222 Pigeon Valley Road

Villa Grove Estate, 117 Wakefield-Kohatu Highway

Bush Walk Gallery, 15 Hunt Terrace

Wakefield Bistro, 48 Edward Street

Carol's Emporium, 62 Whitby Road

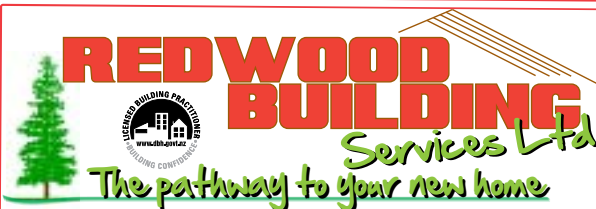
Thistle Studio, 337 Higgins Road

Armageddon Paint Ball, 334 Wai-iti Valley Road

Wakefield Bike Hire, 35 Edward Street

The Village Gallery, 30 Edward Street

Barbars Country Collectibles Curios Crafts, 86 Higgins Road



FOR A PROFESSIONAL, DEDICATED BUILDING SERVICE  
"FROM BEGINNING TO END"



- All building projects undertaken from large to small
- Trade Certificate qualified
- 33yrs experience
- Building inspections
- Site management
- Project management

**REDWOOD BUILDING SERVICES LTD**

**ROWAN READER**

**ph 021 154 6040**

**Email: redwoodbuilding@clear.net.nz**

# Pack Gear Go

## MOTIVATING LITTLE FEET TO MOVE

by Lucy Pearson Co-owner of PackGearGo

We all know that it's good for our children (and us) to get out into the fresh air and move, but sometimes it can be a little hard to convince them of that, especially if there are hills involved.

Through our years of tramping we have come across a few handy things that can help you get everyone moving, and have a great time doing it.

In my last article I mentioned Pack Buddies. These are special little toys that the kids can take with them on their adventures. They can be anything, but for ease they are best if they are small and easy to carry or stow in a pocket. Our kids have each made their own 'Survival Tins' that carry emergency survival bits, so we have either attached their Pack Buddy's to the tin, or popped them inside.

Why are these little guys so great? Well our kids love finding cool places for them to play in or take a 'selfie' with. If you have an old camera even better as the kids can take the photos themselves and may be even write a story about their adventures later.



Another great (and free) option is the new craze of Rock finding (and hiding). Check out the Facebook page for 'Nelson Rocks' and you will see what I am talking about. The children try to find painted rocks around parks and reserves, or they can paint their own rocks and hide them for others to find. The only rule is that the rocks need to be sealed or 'rain resistant' so you can either use something like nail varnish or external paint (little test pots are great for this) or use a sealer which you can get from any hardware store. My kids have hidden some around Faulkners Bush and there are many more all over Nelson.



Probably the most well-known fun thing to do is Geocaching. This used to be the reserve of GPS owners; however with the arrival of Smart Phones you can now download Geocache Apps which help you locate them. A Geocache is basically a wee box (or like) that you find using a GPS location. Although quite a few Geocache sites are now Paid Members Only, there are still a few free ones. The best ones to find are the Treasure Box ones, as usually inside there are trinkets that the children can swap for something else. Again these are just low cost things (great place to ditch the Happy Meal Toy!). So before going for a walk with the kid's google Geocache and see what is in your area. Take a few wee trinkets to swap and get walking.

If you want more information on any of these things, feel free to pop in and see us at PackGearGo, check out the website & Facebook page or give us an email or call. We would love to hear any of your tips and trick for walking or camping with the kids so feel free to get in touch.



## PACKGEARGO

### Great gear from people who use it

Show room open every Thursday 4pm to 8pm or by appointment

Now stocking the full range of Kai Carriers.

The no mess solution to feeding fresh homemade food on the go



**WARREN and LUCY**

167 Whitby Road, Wakefield, Nelson, 7025 m:027 309 4256

e:sales@packgargo.co.nz [www.packgargo.co.nz](http://www.packgargo.co.nz)

# Live Local Shop Local

## The Villa – Jeder ist willkommen hier (All are welcome here)

by Rebecca McGarvan McILwraith

When young German couple Michael (Mike) Meissner and Marleen Mandok left Auckland in 2016 to establish "The Villa" in Wakefield, they came with a vision to be part of the community – not just a shop. And in typical Wakefield style, they got more than they bargained for! Marleen said "Wakefield has been really welcoming. Even before we opened the locals flooded in to say "Hi" - everybody is happy that the place has opened again."

But make no mistake 'The Villa' is different from its predecessors. Together Mike and Marleen have a tonne of experience in the service industry; Mike trained as a chef in Bad Hersfeld and Marleen as a Hospitality Manager in Bad Kissingen, Germany. Moving to NZ about ten years ago, both have worked in senior positions within hospitality establishments including 'Collective' - the country's fastest growing hospitality catering company.

What can customers of The Villa expect to find? At the counter there are traditional German treats such as iced chocolate or coffee, Bee Stings and Donau slices, alongside Kiwi favourites. A lunch special is served weekly and a full lunch menu (salads, mains, desserts and a kids menu) is available during weekends. Very soon, a delicatessen will be opened that offers fine art, local and imported foods from Spain, Germany and elsewhere around the world, all available to take away or served on a platter. There will also be themed dinners.

Mike and Marleen decided to move to the Nelson/Tasman region to establish a different family life from how they lived in Auckland, and to build something that they can be proud of. When asked what the secret to a successful food business is Mike says "It's the care factor. To survive in hospitality you just have to love your job, and you don't serve it if you don't like it!" While Auckland must be reeling from the loss of this talented couple, The Villa is a welcome addition to Wakefield village and a must visit for locals and tourists alike.

### The Villa, 14 Whitby Way, Wakefield

T: 03-541 8531.

E: [info@dailyexchange.co.nz](mailto:info@dailyexchange.co.nz).

FB: <https://www.facebook.com/TheVillaWakefield/>

Opening hours are: 09:00 to 16:00,  
Tuesday to Sunday.

Closed on Mondays during the summer.

Reservations are not essential,  
but recommended on weekends.

Just turn up and enjoy the hospitality.



**maintenance**

**repair**

**alterations**

Here at WMB Contracting we are a fully licensed building practitioner ready to help you on your next building project. Whether it be a repair/alteration to an existing structure or even if you are planning to start from scratch, we are here to make it happen.

We are based locally in Wakefield and service the Tasman and Nelson areas. Contact us for a free quote on all jobs big or small.

**WMB Contracting, helping you to get that job done!**

**Call or email for your FREE quotation...**

P. 027 834 3596  
E. wmbcontracting@gmail.com

**WMB**  
CONTRACTING

**The Vet Centre**

Whether you have cattle, horses, dogs or cats, the staff at the Vet Centre always endeavour to treat each animal as an individual for personal patient care. Let us help you to treat your animals with the quality care they deserve.

For a happier, healthier animal, family and lifestyle come see us at The Vet Centre Richmond.

**Our services include**

- Large animal and Equine services
- Small animals furry and feathered
- Surgery and dental procedures
- Digital x-ray and Ultrasound
- Free Travel to Tapawera on Thursdays
- Puppy Classes and nutrition consults and so much more!

**24 hour emergency 03 544 5566**  
[www.vetcentre.net.nz](http://www.vetcentre.net.nz)  
Richmond Clinic - Gladstone Road 03 544 5566  
Motueka Clinic 03 528 8459 and Mapua Clinic 03 540 2329  
**Keep an eye on our promos on Facebook**

*all about you*  
**BEAUTY THERAPY**

Specializing in Professional Salon Skin Treatments and Prescribed Skin Care to achieve ultimate skin health for your best skin ever

Come in and see how this new product can help you achieve your best skin

- resurfacing**  
Alpha Hydroxy Acids smooth and deep cleanse
- anti-pollution**  
Activated Binchotan Charcoal adsorbs pollutants
- age protection**  
Niacinamide and Red Algae combat skin ageing triggers

smooth away skin-ageing pollution  
**NEW!** daily superfoliant™

**dermalogica**

**f** 1 Bird Lane, Wakefield  
[www.allaboutyoubeauty.co.nz](http://www.allaboutyoubeauty.co.nz)

Phone: 541 9510  
Mobile: 027 6143 298

**Wakefield ELECTRICAL LTD**

We Do All Electrical Work (incl. Caravans WoEFs)  
*Andrew Smith - Electrician/Inspector*  
— Est. 2013 —

**03 541 8797 - 027 441 8797**

*"Your Local Electrician"*

**Nelson Travel Broker**  
your journey starts here

*locally Owned & Operated*

Phone: 03 541 8417 or 021 545 799  
Email: [sue@nelsontravelbroker.co.nz](mailto:sue@nelsontravelbroker.co.nz)

AIR NEW ZEALAND **Holidays** TRAVEL BROKER

Check out what my clients have to say at [www.nelsontravelbroker.co.nz](http://www.nelsontravelbroker.co.nz)

# Wakefield Bowling Club

by Tony Eames

The February Tournament was sponsored by Wakefield Auto Services, many thanks to Steve & Wendy Peterson for their support. There were 14 teams of triples each playing 4 games through the day. The winner was Neville Mannins' team from Tahunanui Bowling Club, 2nd was Yvonne Closey with her sister Gill Goulding & Barbara Wadsworth from Ngawhatu Bowling Club and 3rd was Wakefield's Graham Burrows, Kevin Edwards & Trevor Woodbury.

The Wakefield women's sevens team is heading to North Shore, Auckland on 2 -5 March for the National Interclub Tournament, having won the Nelson Centre Interclub Division 2.

We are very grateful for support towards travel costs from Wendy Pearson of Tall Poppy Real Estate and a grant from Mainland Foundation via the Turf Hotel in Stoke.  
"Go well girls".

Barbara McGregor, Margaret Eames, Julie Hall & Linda Sisterson have won the prestigious West Coast Women's Fours Tournament against top teams from throughout the South Island.

Latest Club Championship winners:  
Women's Open Singles - Linda Sisterson  
Men's Open Singles - Tony Eames  
Men's Junior Pairs - Steve Goodfellow & John Oakley.

Champion of Champions events take place over the next two months.

#### Nelson Representative teams:

Barbara McGregor & Margaret Eames have been selected for the Nelson Reps' team for the National Intercentre Tournament to be played in Wellington in March.

Linda Sisterson & Di Holland, Peter Sisterson & Tony Eames have been selected for the Nelson under 8s teams for the National Intercentre Development Tournament in Christchurch. Wakefield has four players from the total of seven women & seven men in these development teams, more than any other club in the region.  
"Good bowling".

New players are welcome at any time including the social roll ups on Monday & Friday afternoons.  
Please contact Tony on 5418316 for more info.



From L: John van der Laan, Carolyn Mason & Ron Charles with the President's Trophy for the Nelson Centre Saturday Interclub.

## WAKEFIELDQUARRY

Drainage metal : Hard fill : Basecourse 70mm : Topcourse 40mm & 20mm  
Landscape rock : Lime : Firewood

*You Collect or We'll Deliver*



566 Church Valley Road, Wakefield

Ph: 5419093

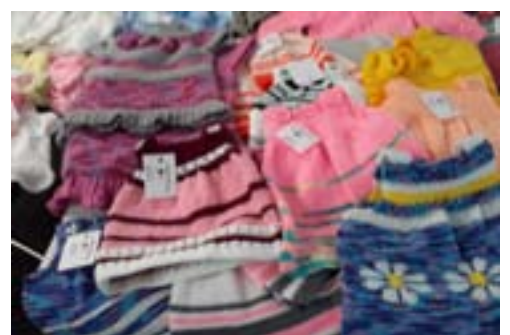
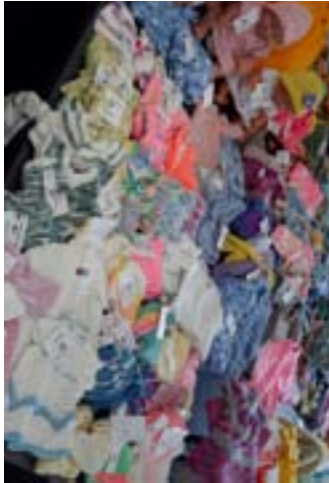
Mon - Fri 7.30am - 5pm

# Wakefield Craft Group

We have just completed our last grant from September 2016 from Tasman District Council for knitting clothes for Plunket in the Tasman District and also for the Special Care Baby Unit of Nelson Hospital.

We presented our knitting last Wednesday 22nd February 2017 which consisted of over 219 balls of 100gms for our grant plus many more that our members have knitted with their own wool.

On behalf of all the ladies we would like to thank the TDC and all the keen knitters.  
See our photos for the knitting we have done and some of our knitters with their knitting hard at work.



# Wakefield Bistro

## AND IT'S GOODBYE FROM US ...

Yes that's right unfortunately we finish here at the end of March, I'm not bitter just gutted as we have built up a nice little niche business here with you, the community. The support we have received from you all has been amazing and it would have been fantastic to do another year.

We have loved helping you celebrate birthdays, anniversaries, end of year functions and just the lovely comments that have kept coming about our food and staff and that finally you had somewhere close to go that served great food, also the fact that you have come back to the Hotel after many years of not wanting to bother as it wasn't up for much. This has been very heart-warming and we very much love what we do and know we have/had a good formula here.

The owners Bruce & Graham Vercoe are also aware of what my little restaurant is capable of hence not wanting to renew my lease, and they are going to put a chef in there themselves. The idea being to run both sides as one.

Part of the new vision for the hotel is that they are also on the lookout for a new managing couple to take over and lease of the entire building, which does make sense from a business point of view.

On the upside, the owners have listened to your requests and complaints, and with new managers will come longer trading hours and also a properly landscaped frontage to include a seating area in which you can come and sit with your dog and have a drink. This in time will be a great asset for our little village.

Thank you once again for the opportunity, my team and I have very much loved being part of the community and as the saying goes "One door closes another one opens."

Will look forward to you popping in for dinner or coffee before the end of March

Jeanette [owner/chef] Brian, Dot, Kayle, Alice, Savannah, Laura, Jasper.

**PAULA ALDRIDGE**  
PAINTINGS | JEWELLERY | WORKS OF ART

☎ 03 755 6051  
☎ 027 635 1368  
✉ jewellergirl@xtra.co.nz  
[www.funkyartist.co.nz](http://www.funkyartist.co.nz)

**WAKEFIELD BISTRO**

It is with great sadness and due to circumstances beyond our control that we have to let all our loyal customers know that we will be closing as of the end of March.

We would like to thank you all for supporting us over the last year.

We will still be open for Dinner Thursday to Sunday from 5pm till the end of March

Bookings Phone 027 545 0648  
or Hotel 541 8006

**SPORTS APPAREL**

Team Wear  
Touch Shirts  
Hoodies  
Jackets  
Branding

**Wakefield PRINT LTD**  
WEBDESIGN • PRINT • APPAREL

Ph: 03 541 9641 E: info@wakefieldprint.co.nz  
**WEBDESIGN • PRINT • APPAREL**



# Live Well Stay Well

"Live well Stay well" group Recommencing April 4th from 9.45 - 11am with a coffee and chat session at The Villa. All interested are welcome especially those new to the area. Come and meet some friendly locals.

We are a healthy living and social group for the over 50s living in the Wakefield and Brightwater areas. A varied programme is arranged which is informative and fun. We meet regularly for coffee and chat sessions, go for local walks, visit places of interest nearby or have speakers of interest to us all. Attached are some photos of some of our past activities.

Watch for programme advertising on local notice boards and in the Wakefield news

For an up to date programme to be emailed to you, please contact, Yvonne Moore 5422235 or Margaret Clark 5419693.



**Mobile Feet Podiatry**



**Carole Horrell B H Sc (Podiatry)**

Now available at Wakefield Health Centre  
Phone Carole to book

**Mobile: 021 0247 4037 | A/H 03 9275120**  
**Email: carole@mobilefeet.co.nz**  
**www.mobilefeet.co.nz**

**Kernow CONSTRUCTION**  
BUILDING & LANDSCAPING  
DESIGN · CONSULTATION · CONSTRUCTION



**Jason Preller A.N.C.H**  
Tel: 03 526 6095 Mob: 021 167 3803  
Email: kernow4construction@gmail.com

## Ticking the Boxes

Nelson / Waimea Anglican

### Seniors Seminars

Nelson/Waimea Anglican Senior Care group are putting on Senior Seminars,

The seminars are free of charge and a finger food lunch is provided.

Limited transport is available for Wakefield and Brightwater residents: limited spaces so bookings are essential

If you are interested in our seminars and would like to know more information please phone our call centre on 0800 268 269, otherwise feel free to just turn up at the seminar or contact Nicola on 021 277 8061 / 5423694 for transport.

We would love to see you there.

You may also be interested in our monthly events, a weekly exercise and games morning, someone to come and visit with you, help with shopping and help with transport to appointments, cost: donation only any inquiries again phone Nicola.



### Ticking the Boxes

# Wakefield Playcentre

by Liz Ashburner

We've had a great start to 2017 at Wakefield Playcentre with some new faces and lots of energy and enthusiasm from returning families. The weather has been much more settled than last term and we have all been enjoying plenty of outside and messy play.

There has been lots of interest in creative and pretend play from some of our younger tamariki who are developing friendships and exploring everything Playcentre has to offer. It is great to see their growing interest in group play and the way relationships formed through Playcentre become part of the whanau's wider community.

As well as providing learning and development for our children, Playcentre also offers education for adults. All Playcentre parents and caregivers are offered the opportunity to attend free workshops and can work towards the Playcentre Diploma in Early Childhood and Adult Education.

The workshops are often delivered on session, so childcare is provided, and include topics such as Child Development and Guiding Children's Behaviour. They are designed to be useful for helping children on session but are also relevant for parenting in general. They can give a real insight into the ages and stages children go through and how best to work with them to help them learn and develop.



We have some workshops coming up over the next few months and are really looking forward to trying out some of our new ideas to create a great learning experience for our tamariki at Playcentre.

**Hair Raisers**  
Magic Can Happen  
Ph 541 8312



**WAKEFIELD PHARMACY**  
the caring pharmacy

Join us on our **FACEBOOK** page and be in the draw to win our monthly prize.

Shop hours -  
Monday 8.30am to 5.30pm - Tuesday 8.30am to 5.30pm - Wednesday 8.30am to 7pm  
Thursday 8.30am to 5.30pm - Friday 8.30am to 5.30pm - Saturday 10am to 12pm

4 Edward Street, Wakefield - Phone 03 541 8418 - Fax 03 541 9100  
[www.wakefieldpharmacy.co.nz](http://www.wakefieldpharmacy.co.nz)

# Community Notices

**HIGGINS HERITAGE PARK** 222 Pigeon Valley Road, Wakefield, Nelson Email: pigeonvalleysteam@hotmail.com

Home to: Pigeon Valley Steam Museum (2013) Inc. •  
 Historic Transport Museum Trust • Rover Car Club Nelson •  
 Nelson Vintage Engine & Machinery Club Inc. • Army Group Centre Inc.  
 AND NOW • the Ray Win Collection of cars and speedway motorcycles.

P.O. Box 62,  
 Brightwater, 7051

**2016/17 SEASON EVENTS.**

"On Steam" first Sunday monthly, September to May. (January on the 2<sup>nd</sup> day of the month.) These days are also part of Destination Wakefield where many attractions and lunch venues around the Village are all open together for a great day out. Higgins Heritage Park sheds are open on the 3<sup>rd</sup> Sundays monthly until winter.

Sunday 4 <sup>th</sup> September:	On Steam, and Classic & Collectable Car Show.
Sunday 2 <sup>nd</sup> October:	On Steam.
Sunday 16 <sup>th</sup> October:	On Steam for Touring Classic Trucks. All welcome.
Sunday 6 <sup>th</sup> November:	On Steam.
Sat. & Sun. 12 <sup>th</sup> & 13 <sup>th</sup> November:	On Steam and Logging Weekend.
Sunday 4 <sup>th</sup> December:	On Steam.
Monday 2 <sup>nd</sup> January:	On Steam, coincides with Wakefield Craft Day.
Sat. & Sun. January:	On Steam and Vintage Machinery Club Show.
Sunday 5 <sup>th</sup> February:	On Steam.
Sat. & Sun. 4 <sup>th</sup> & 5 <sup>th</sup> March:	On Steam and Transport Museum Show
Sunday 2 <sup>nd</sup> April:	On Steam.
Sunday 7 <sup>th</sup> May:	Last Steam Day, and Military Re-enactment Action Day.

Sheds will be open only on first Sunday of June, July and August for winter.  
 Special visits may be arranged with Park Manager. (Allan, 027 310 7427)

**DID YOUR BUSINESS MISS OUT THIS TIME**



**DON'T DESPAIR**  
**WE HAVE SAVED**  
**A SPOT FOR THE NEXT**  
**PUBLICATION**  
**JUST FOR YOUR BUSINESS**

**Give us a call**  
**541 9641**  
**or**  
**Email**  
**info@wakefieldprint.co.nz**

**AVAILABLE TO RENT**

**TOTARA VIEW COTTAGE**  
 164 Totara View Road,  
 Wakefield



Furnished - One bedroom (queen bed) with ensuite shower and toilet.

Living area with heat pump, kitchen with underfloor heating, laundry, study area. Linen and towels included.

Rent - \$250 per week incl electricity and gas

Contact: 03 541 9689 or 027 364 0073

*Wakefield Craft Group*



**Come and join the ladies Craft Group held on Wednesday mornings in the Fire Brigade Supper Room Pigeon Valley Road 9.00am - 12pm**

**Bring any project - sewing, knitting, crochet. Learn to knit or crochet or just come for a look and join us for tea, coffee and company. Small donation**

**For more information phone Judy on 5418342**

**Check out our Focus Wakefield Facebook page**

**www.facebook.com/FocusWakefield**

**Share your stories, photos, events with the community.**

**Post items wanted, for sale, help needed etc...**

# Community Notices



Wakefield has much to offer within a small area and so we have come up with the Destination Wakefield days.

The first Sunday in each month (from Sept to May) will be a happening time in Wakefield. Pigeon Valley Steam Museum will be on steam, Willow Bank Heritage Village will be open to the public and Villa Grove Estate will be offering their special olive oils for sale. Have a coffee & lunch at the Wakefield Bistro located in the Historic Wakefield Hotel. Carol's Emporium, Thistle Gallery, Armageddon Paint Ball, Wakefield Bike Hire, Barbars, The Bush Walk Gallery and The Village Gallery are among other Wakefield businesses open - make a day of it!

All these activities will be open from 10am - 3pm.

**SUNDAYS: 4.9.2016 | 2.10.2016 | 6.11.2016 | 4.12.2016  
2.1.2017 | 5.2.2017 | 5.3.2017 | 2.4.2017 | 7.5.2017**



## Do You Have Photos of Historical Interest That You Would Like to See Preserved For the Benefit of Future Generations?

Waimea South Historical Society would be happy to take care of them for you.

They would be housed in the Tasman District Library and become part of our collection.

Like the George Lawrence Collection they would eventually become digitised and available on-line as part of the Kete Website.

If you wanted to keep them but thought they would be of interest to others they could be copied and dealt with in the same way.

Just make contact with Arnold Clark Ph 544.7834

## WAKEFIELD MARKET DAY

Saturday 11th March  
Summer hours 8am to 12pm

Come enjoy the village market - a large array of goods available. Books, plants, recycled goods and more all waiting for a new home

BBQ and sites available, ring Jean 541 8154

## BETTER THAN BEFORE GROUP

Want to work on an intention for the New Year? Create and keep better habits? Lets meet 2 weekly as a small group to motivate each other, share intentions and knowledge

March 2nd, 16th and 30th  
William Higgins Cobb Cottage, 170 Main Road, Spring Grove

All welcome just turn up

Email [kathycambridge@yahoo.co.nz](mailto:kathycambridge@yahoo.co.nz)  
[Put "group" in the subject line]

## RAW FOODIES MONTHLY MEETING.

Interested in changing to a more healthy type of nutrition?

Come for a shared raw lunch.

Topics; 1.How to get more greens into your life  
2.Sprouts.

Please bring your ideas and a raw dish to share.

Venue; William Higgins Cob Cottage.  
!70 Main Rd. Spring Grove.

Just turn up or inquiries to Sally Rees, 5488403/  
0211709443.

## RURAL PROPERTY WANTED TO RENT

Feb

Due to our current rental being sold, we find ourselves looking for a country house with some land to rent/lease long term, with a view to purchase in the area.

We have a small number of sheep, and wish to run a few calves, chooks and have our own veg garden.

Being a mature, professional couple and son, we are careful, responsible, quiet folk.

We are ex-sheep/cattle farmers. We have NO dogs.

We would be very happy to help out with farm chores if need be.

If you have or know of a property that needs to be looked after, call us on:

03 543 3600 Anne and Grant.

All areas considered.

# Community Notices



Are you a beginner, or have never drawn or painted before?  
Come and give it a go  
Join our very friendly group

Every THURSDAY of the School Term  
9.30 am – 12.00 pm

Wakefield Village Hall – Supper Room  
\$4 per session/cup of tea included

For more information contact:  
Fiona - P: 027 767 7909  
E: kahurangicottage@gmail.com  
or Sonja – P: 541 8176  
E: sonjal@ts.co.nz

## MAINLY MUSIC

Now meeting at Wakefield St Johns Anglican Worship Centre  
Monday's 10.00am. Cost \$3.00 per family.

This is a time for parents and children to enjoy music, song, dance and lots of laughs.

Any queries please phone Wendy Milson 544-5494.

## WAKEFIELD ANGLICAN COMMUNITY LUNCHES.

The monthly Community Lunches will recommence for the year on Thursday February 16th at 12 noon in the lounge at the Worship Centre.

All welcome.

If you wish to attend we prefer that you let us know by phoning Caroline 5418491 by the previous Monday if possible.

Come and enjoy a social hour and chat over a meal.  
A small donation is appreciated to cover expenses.

## WAIMEA PLUNKET PLAYGROUP

The Brightwater Community  
Anglican Church, Waimea West Road, Brightwater

Time: 9.00 – 12.00 noon Day: Wednesday morning Cost: FREE

## WAKEFIELD JUNIOR TENNIS

Fridays Term 4 and Term 1

To register visit [www.caldertennis.co.nz](http://www.caldertennis.co.nz)

## FOXHILL TENNIS COURTS

658 Wakefield-Kohatu Highway  
(at rear of Rutherford Memorial Hall)  
**FREE PUBLIC USE**

Re-painted lines, nets up ready to go,  
for twilight practices and summer fitness.

Managed by Rutherford Memorial Hall (Foxhill) Assn Inc. for TDC  
Erica Short Secretary/Treasurer 541 8882

## PERMACULTURE GROUP

Our group meets informally on the  
4th Wednesday of the month.

If you are interested in joining us to share knowledge or  
learn to start growing food organically  
then ring Diana and Iain on 5418950 for the venue.

## 2017 NELSON'S BIRTHDAY

### Celebrating 175 Years of European Settlement

This February it will be 175 years since the first four emigrant ships: *Fifeshire*, *Mary Ann*, *Lloyds* and *Lord Auckland* arrived in Nelson Haven, carrying our pioneer ancestors from Britain. Over the course of the year 15 more would follow.

*Window on Wakefield* encourages all families, clubs, societies and organisations which are based in and around Wakefield to recognise this in some way during the year.

We would also like to **publish photographs of any houses which were built prior to 1900**. We may have a photo of your house on file, but if you think we haven't please feel free to send us one (the most interesting side) in jpg format. Include the name of the family who first owned it and (if possible) the year of construction as well as your address.

Send your e-mail to [rogerab@vodafone.net.nz](mailto:rogerab@vodafone.net.nz)

With the title: Nelson's 175<sup>th</sup> Birthday

**FOR SALE**  
**WANTED**  
**FREE**  
**HELP**

**WE NEED YOUR  
FOR SALES  
WANTED  
OR HELP REQUESTS**

**PLEASE CONTACT  
541 9005  
SOME LIMITATIONS APPLY  
PLEASE ASK**

# Community Classifieds

**FREE** *March*  
Large old chest freezer, suitable for storing animal and dry food.  
Phone 542 4428

**FREE** *Nov*  
Hen & Baby chicks to give away to a good home.  
Phone Rachel 541 8763 or 027 286 7927

**FOR SALE** *Nov*  
Sheep Manure \$8.00 per 25kg bag  
Can deliver ph: 541 8488

**STORAGE BAYS AVAILABLE** *Nov*  
Great for a Motorhome or Boat, Wakefield area.  
Contact: 541 9726 or 0210 833 0261

**FOR SALE** *Dec*  
Free range eggs \$5.00 per dozen  
Ph Gail 541 9701

**FOR SALE**  
Swings - pipe and chain type \$35.00  
Ph Marion 541 8018

**FREE**  
Half tractor tyre large, suitable for sandpit  
Ph Marion 541 8018

**FOR SALE**  
Highline brown pullets from excellent laying stock, quiet, vaccinated and guaranteed.  
Ph Alison White 021 168 0324

**WANTED** *March*  
Metal filing cabinet, size or condition doesn't matter, something cheap  
ph Murray 541 9655

**FOR SALE**  
SONY BRAVO 42" TV \$150.00  
Perfect condition - we upgraded to a Smart TV. Tel:- 541 8817

**FOR SALE** *Jan*  
Dolls and knitted and sewn dolls clothes  
phone Judy 5418342

Also wanted someone who can translate dolls knitting patterns from French into English  
Phone Judy 5418342

**FOR SALE**  
Ram 4yr English Leicester Purebred.  
Good feet, good nature, good wool.  
\$150.00  
Ph 541 9119

**FOR SALE** *March*  
Tipperary Equestrian Body Protector- Size YL adjustable fit.  
Worn twice, as new condition  
\$220.00  
christinegodfrey@windowlive.com

**FOR SALE** *Nov*  
Agapanthus - cheap mature plants.  
Clearing out section.  
Phone 03 265 5066

**FOR SALE** *March*  
White Sleigh Cot with draw underneath plus mattress in excellent clean condition. \$150.00.  
Please phone 5419779.

Haier Bar Fridge HRZ-40 Litre  
excellent condition. \$130.00.  
Please phone 5419779.

**WANTED** *March*  
free hens. I need chooks to scratch and fertilise, not necessarily for eggs. Happy to take your end of lay ladies that you don't want to have to feed. They will be treated well and have plenty of space on our large section. No roosters please!  
Jenni 027 224 0977 jennik@ts.co.nz

**WANTED**  
Piano music and any lesson books or similar to help a complete beginner who also needs to learn to read music. I'm determined to teach myself but any help would be great.

Also Paint, any old or unused paint, any colour, size or type. Tins or part tins oil, turps or solvent base. Water base only in plastic containers.

To paint some old toys, shed shelves and a few farm bits and pieces.  
Phone Murray 541 9655

**FOR SALE or TRADE**  
Old hay, too old for animals but excellent for compost or mulch.

About 1 tandem or 2 small trailer loads.  
Offers or trade ?

Clothes drier, Frigidaire. Older model but had very little use.  
Offers ?

Phone Murray 541 9655

## PETITION FOR WAIMEA EXPRESS BUS

A group in Nelson that lobbies for sustainable transport options (Nelsust Inc) is getting up a petition to try to persuade TDC, NCC and NZTA to trial a commuter bus service between Wakefield and Nelson, with stops at Brightwater and Richmond and using Whakatu Drive, this service to be in addition to the regular service between Richmond and Nelson that runs through Stoke. If you think this would be helpful for Wakefield as a whole could you please sign our petition.

The petition can be signed at Chateau Rhubarbe, 6 Edward St or on-line at

<https://www.surveymonkey.com/r/X5HCZ26>

Please use the comments column to give your reasons for wanting the express bus service.

## Situations Vacant



We are looking for awesome people to join our team.

We have opportunities for:

- Cook/Baker
- Front of House Staff

As we are a 7 day a week business flexibility and the ability to work weekends is a must.

Working as part of a small team we require the ultimate all rounder.

Some experience an advantage but full training and support is available.

Only those who are invited to interview will be contacted.

Please send CV, including referees and any relevant training and qualifications to: [mauzgonz@xtra.co.nz](mailto:mauzgonz@xtra.co.nz) or call in and see us. Please type "Job application" in the subject line.

## WAKEFIELD BOWLING CLUB

Wanted scrap metal, appliances, old wiring, old car batteries, etc

Wakefield Bowling Club is willing to collect any items.

Please phone Trevor on 5418855

## WANTED - ROVING REPORTERS

Window on Wakefield are looking for more volunteer roving reporters.

Please contact us on [windowonwakefield@gmail.com](mailto:windowonwakefield@gmail.com)

# Community Directory

**Citizens Advice Bureau**  
548 2117 - 0800 367 222

**Rutherford Memorial Hall**  
658 Wakefield-Kohatu Highway, Foxhill  
Bookings and enquiries:  
Erica Short 541 8882 or  
rutherfordmemorial.hall@gmail.com

**Pigeon Valley Steam Museum**  
Alan Palmer 027 319 7427

**Rural Ramblers**  
Carolyn Mason 541 9200

**Spring Grove Drill Hall**  
C. Pike 542 3904

**Totaradale Golf Club**  
Jacquie 541 8030

**Wakefield Anglican Church – St Johns**  
Meet Sun 9.00am; 10.30am  
Rev. Allan Wasley 541 8883

**Wakefield Community Library**  
Wendy Gibbs 541 8490  
Pam Dick 541 8392  
Hours - Tues 10.30 -11.30am  
Friday - 2.30 - 4pm  
Excluding Public Holidays

**Wakefield Football Club**  
Chris Olaman 027 541 9029  
Ian Radcliffe 021 0244 6459

**Wakefield Medical Centre**  
541 8911

**Wakefield Pharmacy**  
5418418  
doug@wakefieldpharmacy.co.nz

**Wakefield Playcentre**  
Contact: 541 8866

**Wakefield School**  
Edward Street 541 8332

**Wakefield Scout Group**  
wsg4kids@gmail.com

**Wakefield Toy Library**  
Saturday 9.30-11.30am  
Chris Gaul 541 8148

**Wakefield Volunteer Fire Brigade**  
DCFO Fritz Buckendahl 027 224 4162

**Justice of the Peace**  
Katie Greer  
896 Wakefield/Kohatu Highway  
Ph 021 547 756

**Country Players (Drama)**  
Jen Amosa 541 8139  
enquiries@countryplayers.org.nz  
www.countryplayers.wordpress.com

**Nelson Vintage Engine & Machinery Club**  
Allan 027 319 7427

**Pinegrove Kindergarten**  
03 542 3447

**Rural Women**  
Dawn Batchelor 542 3628

**St Joseph's Catholic Church**  
Sun 8am, Thurs 9.30am  
Parish Priest Seth Pijfers 544 8987

**Waimea Sheepdog Trial Club**  
Colin Gibbs 541 8435  
gibbs@ts.co.nz

**Wakefield Book Group**  
Mahala White - 541 8933 or  
Chrissy Harris - 541 9596

**Wakefield Bush Restoration Society**  
Doug South 541 8980

**Wakefield Craft Fair**  
Leanne and Glen Turner  
541 8306

**Wakefield Plunket**  
Donna Todd 541 8583

**Wakefield School/ Community  
Swimming Pool**  
Phill Platt 027 231 7610

**Target Shooting Wakefield**  
targetshootingwakefield@gmail.com  
Contact: Dot Ashton  
541 8989 or 027 543 0529

**Wakefield Rest Home Ltd**  
Cath Smart - Manager  
Rita O'Neil - Clinical Manager  
541 8995

**Wanderers Sports Club**  
542 3344

**Wakefield Physiotherapy**  
Kate West 03 541 8911

**Window on Wakefield**  
Advertising - 541 9641  
Genie & Lindsay Bradley

**Focus Wakefield**  
focuswakefield@gmail.com

**Just Gymnastics**  
Linda Mace 546 6013

**NZ Postcard Society Inc.**  
Doug South 541 8980

**Richmond Lions - Wakefield Rep**  
Ivan Burrowes 541 9689

**Spring Grove Church of Christ**  
Meet Sundays 10am  
541 8011

**Top of the South Rural Support Trust**  
gibbs@ts.co.nz  
Colin Gibbs 541 8435

**Waimea South Historical Society**  
Arnold Clark 544 7834

**Wakefield Bowling Club**  
Margaret Eames 541 8316

**Wakefield/Brightwater Book Club**  
Pauline Coy 542 3994  
paulinebc@gmail.com

**Wakefield Community Council**  
Sonia Emerson 541 9005

**Wakefield Indoor Bowls Club**  
Ren Olykan 541 8275

**Wakefield Preschool**  
Contact: 541 8086

**Wakefield School PTA**  
ptawakefield@gmail.com

**Wakefield Tennis Club**  
Ngaire Calder 541 9419

**Wakefield Village Hall**  
Rob Merilees 541 8598

**St. John's Worship Centre**  
Nigel Massey 541 8857

**Waimea Plains Junior Football Club**  
Debbie and Grant de Joux  
541 8307

**Window on Wakefield**  
Articles & Content - 541 9005  
Sonia Emerson

## CIVIL DEFENCE - WAKEFIELD AREA COMMUNITY RESPONSE

In the event of an emergency, your first task is to ensure the safety of your own home, family and neighbours. Once you have attended to this, if you have **specialised skills/ equipment**, and/or feel you can assist others; or require assistance yourself, please make your way to the Welfare Centre which will be at the St Johns Worship Centre in Edward Street [unless notified otherwise].

Please note that the existence of a Welfare Centre does not absolve each individual from their **responsibility to be personally prepared**.

You should ensure that you have your own **survival kit** in place, and that you are able to be **fully self sufficient for at least three days**.

In the event of an emergency, for urgent public messages, tune in to:  
More FM 94.1, Classic Hits 89.8, Fresh FM 95.4



I've sent high commissions **PACKING**  
with our **UNBEATABLE FLAT FEE**



### WAKEFIELD

21A Harcourt Pl \$659,000+



3 bed plus office on a 1257m<sup>2</sup> section.

### WAKEFIELD

57 Lord Auckland Rd \$559,000+



4 bed, 2 bath and a sunny covered patio.

### WAKEFIELD

9 McCrae St \$619,000+



Beautiful 4 bedroom home and garden

### WAKEFIELD

548 Wai-iti Valley Rd \$589,000+



Country cottage plus sleepout, 4702m<sup>2</sup>

### BRIGHTWATER

4 Ben Nevis Cres

**SOLD**



### BRIGHTWATER

6 Newman Ave

**SOLD**



## WANTED

Cash buyers  
up to \$750,000  
House & lifestyle  
block. Wakefield  
or Brightwater.

Retiree looking  
for a home  
up to \$360,000.

Wakefield  
to Tapawera  
lifestyle,  
minimum of  
3 acres, up to  
high \$500,000's.

House to do up.  
Up to \$360,000.

I love giving back to our fantastic community and am so proud to support the following organisations



Wendy Pearson

M 021 567 722

P 541 9667

E wendy.pearson@tallpoppy.co.nz

Bulsara Ltd REAA Licensed MREINZ

Licensed Real Estate Salesperson (REAA 2008)