

WINDOW ON WAKEFIELD
 ONLINE EDITION BROUGHT TO YOU
 BY



PHONE 03 541 9641



Loggers Show Case Their Skills at Pigeon Valley Issue 2 December 2012

On the 3rd and 4th of November the valley echoed to the sounds of chainsaws, steam whistles, axes and sawmills cutting. Saturday was all go as teams competed against each other, (and the clock) in the annual 'Chokerman's Race'. This involved everyday logging skills with wire rope, chainsaw and axe, with each competitor completing his section and then running the course - over, along, under and around logs dragging a wire stop, to "choke up" a log as ready for hauling. Competition was very intense in this third year of the event, with eight teams and many of the local logging crews represented.



REDWOOD BUILDING
Services Ltd

The pathway to your new home

Deal Directly with the Builder

- Affordable Home Building, Additions and Renovation
- Flexible and Free Plan Design Service (Conditions Apply)
- Trade Certificate Qualified
- Personal Service from a Family Owned Local Business

Phone Rowan Reader 021 154 6040

WINDOW ON WAKEFIELD

How it works...

Window on Wakefield is produced and published by Focus Wakefield, a subcommittee of the Wakefield Community Council. All businesses advertising in this publication incurs a cost for the advertising space allocated, depending on the size and location of the advertisement. The funds raised from this advertising are used to cover the costs of printing Window on Wakefield. No parties are paid for the time involved with editing, coordinating and publishing this paper. It is the intention that if surplus funds are raised from advertising, that these will be held in a separate bank account to be used for other community projects. The bank reconciliations and financial reports related to this account will be made available to any person who wishes to view them.

Content...

Window on Wakefield is a community newspaper, and as such, we look forward to having articles and content contributed by our community. If you wish to submit a one off article, or suggest some regular content, please make contact with Sonia on 541 9005 or email windowonwakefield@gmail.com and read the Terms and Conditions below.

We try to ensure information published is truthful and accurate, but do not check the facts of the articles and therefore cannot attest to their validity. While all reasonable care is exercised, we do not accept liability for any loss whatsoever incurred through our errors, acts or omissions in relation to the content of an article, or for any consequences of readers' relying on the information published. Opinions expressed by contributors do not necessarily represent the views of the Focus Wakefield group, nor are they necessarily endorsed by the Editor or Publisher.

Advertising...

If you wish to advertise in Window on Wakefield, please make contact with Genie or Lindsay on 541 9641 or email enquiries@wakefieldprint.co.nz and read the Terms and Conditions that will be provided on the rate card.

TERMS AND CONDITIONS REGARDING PUBLISHING OF CONTENT

- All articles and other content submitted for publishing must disclose the author's name or where the article/content is contributed by a community group, then that community group's name.
- All images should be provided to us in a high quality PDF format. We take no responsibility for the quality of reproduction for images that are not supplied to us in this format.
- If you wish to make changes to an article or content already submitted, please ensure these are communicated to us before the relevant deadline date.
- When you submit an article or other content for publishing you:
 - agree that the submitted material and/or images can be reproduced by the Editor or Publisher at any time without your prior approval
 - agree that all photographs submitted for publishing are provided free of charge, and the approval to print has been obtained from any persons shown in the photo - this is the responsibility of the person submitting the photo
 - acknowledge that all material is held by us at your risk and is not insured by us. Material will only be returned on request and may otherwise be destroyed by us
 - warrant and undertake that no statement, image, representation or information contained in your supplied article or content:
 - is or is likely to be misleading or deceptive;
 - is at all defamatory, in breach of copyright, trademark or other intellectual or industrial property right;
 - is otherwise in breach of the Copyright Act 1994, Defamation Act 1992, or any provision of any Statute, Regulation or rule of law.
- We reserve the right to decline the publication of any article or any content what soever on any grounds that we in our absolute discretion see fit.



Jill O'Brien
 R D 1 Wakefield
 Rural Mail Contractor
FOR ALL YOUR MAIL NEEDS
 Stamps, Parcels, Freight
 Phone 541 8963
 Mobile 027 324 2126

DID YOUR BUSINESS MISS OUT THIS TIME



DON'T DESPAIR
WE HAVE SAVED A SPOT FOR THE NEXT PUBLICATION JUST FOR YOUR BUSINESS

Give us a call 541 9641 or Email info@wakefieldprint.co.nz

NEXT EDITION

Due out the first full week of each month

All Advertising to be submitted by the 20th of the Month prior
 All Content to be submitted by the 23rd of the Month prior
 For Advertising please contact Wakefield Print Ltd 541 9641
 For Content please contact All Accounts Matter Ltd 541 9005



Loggers Show Case Their Skills at Pigeon Valley Continued



The surprise winners were the Fulton Hogan team (roading contractors) of Stuart Heath, Matt Riordon, Tony Heslop (the only one with logging experience) and Andy Allen (a desk bound manager). In the tense final, a time of 4 minutes 27 seconds just edged out Kelly Logging's second placed K1 team. It seems that after Fulton Hogan's second to last place last year, Stuart's father in law, Rex Kelly, schooled them up a little. With it neck and neck, they pulled out all the stops. Next year will be interesting! First prize is \$2400 worth of goods from Sthil NZ. Second \$600 from Richmond Equipment. Bowater Toyota again sponsored a wire rope splicing competition won by Caleb Russ, closely followed by Mark Pyers.

Other activities during the day and all day Sunday featured; the Museum Steam Skyline and Traction Engine hauling logs, three sawmills and an old two man chainsaw operating and local axeman chopping. Ricky Pascoe gave several unique displays of tree climbing on the way up and finally topped the standing tree. Lester Rowntree, with his two Clydesdale horses hauled and rolled logs, gave sledge rides and participated in a tug-o-war, people versus horses. Jim Balck showed how the old Face Shovel of Waimea Contract Carriers could dig out stumps.

The public and competitors all enjoyed BBQ style food cooked army style by the Military Re-enactment Group based at Higgins Park and also Sprig and Fern Beer in the hospitality tent. A most enjoyable weekend had by all. You can be sure the professional loggers will be out to catch Fulton Hogan next year.

Written by Allan Plamer – P V S M Secretary
 DON'T MISS IT.



Mountain Valley Honey is locally owned by Murray and Nicky. Our bees forage for honey in the Marlborough Sounds and Mt Richmond Forest Park. Try our Manuka, Honeydew, Autumn Gold, Clover, Kamahi and Native Bush Honey's

Find us at
www.mountainvalleyhoney.co.nz

Introducing Focus Wakefield

Are you wondering about Focus Wakefield and who we are? This article is to help answer your questions.

In July 2012, the Wakefield Community Council (WCC) invited Wakefield residents to its meeting to consider two forthcoming events with long-term implications for Wakefield. These are:

- The Tasman District Councils' (TDC) strategic review of Wakefield to produce "a defensible settlement structure plan showing the spatial structure of existing and proposed development, and a programme of capital activities for infrastructure and community services to support development"
- The arrival of the Great Taste Cycle Trail in Wakefield and the need to coordinate the marketing of Wakefield, its businesses and services, and provision of facilities for cycling visitors.

As a consequence of residents' interest in developing a vision and long-term plan for Wakefield's development, WCC formed a subcommittee to: "identify the unique character of Wakefield and to take a visionary or forward focused approach to Wakefield, using the discussions at this meeting, and the information from the (2010) Peter Kenyon meetings as a starting point."

This subcommittee is now called "Focus Wakefield" and has been meeting regularly since July. Some of you may have attended our public meeting in August.

Focus Wakefield's aim is to build and deliver well-being and prosperity for our whole community while retaining Wakefield's special character.

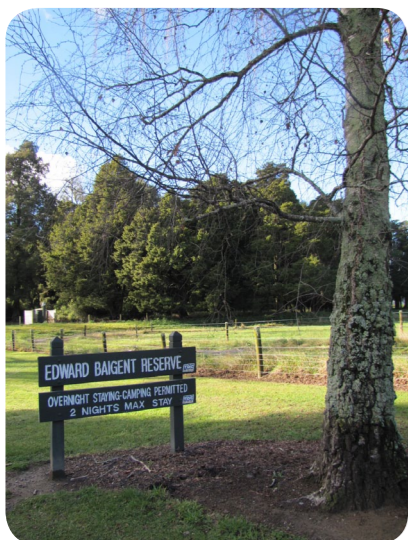
Our objectives are:

1. Build an involved and leader-filled community that is inclusive and resilient;
2. Cherish and share our history;
3. Protect and enhance the iconic character and lifestyle of our Village; and
4. Benefit residents, businesses and visitors now and in the future.

Focus Wakefield currently has eight members and three advisors. Our chair is Lynne Scanlen and our Treasurer (and WCC representative) is Sonia Emerson.

In this edition and over the next few months you can expect more information about what we're up to and how you can participate.

If you want to contact Focus Wakefield call Diane 541 9725, send us an email focuswakefield@gmail.com or post a letter in one of our drop boxes at the Village Tearooms or at the Four Square.



WAKEFIELD PHARMACY

Our Summer Giveaway - Be in to WIN one of two

WIN KAWASAKI K226

ALL TERRAIN BIKES

Spend \$20 to go into the Draw*

*excludes prescriptions



KAWASAKI ALL TERRAIN BIKE



- * Mountain bike with alloy frame
- * 21 speed Shimano gears - EF-50 & TX-5
- * 26" wheel rims
- * Stylish Finish in silver and black
- * Great Kawasaki brand
- * Frame size 19"
- * Front rear linear pull brakes
- * Suspension front forks



OUTSTANDING PRIZE FOR THE SUMMER SEASON

Two Draws - Monday 24th December at 4.30pm
Thursday 31st January at 4.30pm

All valid receipts will be in BOTH draws, so shop with us till the 31st January 2013

Come in and see our wide range of Christmas Gifts new stock arriving daily

Focus Wakefield: How we deliver...

You may be interested in the projects we're planning, want to contribute or have your say. This article is to give you an understanding of how Focus Wakefield manages projects and involves contributors and interested parties.

Each year, in the autumn, we identify possible projects we might consider delivering in the next 12 to 18 months. As you can imagine we have a lot more projects suggested to us than we can easily deliver.

We decide which projects we'll do alongside our existing commitments, like publishing "Window on Wakefield". Based on this, we prepare our annual plan and present it to the Wakefield Community Council for their input. This plan becomes the basis for our grant applications, fund raising and organising. We will publish our annual plan in "Window on Wakefield".

Each project goes through the following six stages. Throughout the project the manager will provide reports in "Window on Wakefield" so you can keep track of what's happening and to provide opportunities to contribute.

The six project stages:

1. We decide the project's objective, what it's delivering (such as an event improvement, or a service) and its boundaries, that is, what it will and won't deliver.
2. We then design whatever it is the project is delivering.
3. Next, we take the design to people and organisations who have an interest and get their input. We also do a risk assessment. Based on this feedback we modify and finalise the design.
4. The next stage is to secure approvals and organise the people, funding, and other inputs we need for the project.
5. We then do the work and deliver the event, improvement or service.
6. Finally we handover any ongoing responsibilities, and complete and report on the project.

What does this mean for you?

You might be interested in suggesting or promoting a project for Focus Wakefield to deliver in the coming 12-18 months. We suggest you contact us in February and March and share your project idea with us, how it helps our community and explain why it's important it be included in our annual plan.

If you're leading or involved in an initiative and want Focus Wakefield to provide advice on how to involve and engage with the community, we will be happy to provide you with advice and suggestions. You're also welcome to contribute articles to "Window on Wakefield".

If you want to join Focus Wakefield, and be directly involved in setting our long term objectives and deciding and delivering our annual plan of work, contact us. We would like to meet you and learn more about you including what interests you, and the role(s) you might consider taking on.

If you want to review and provide input on our annual plan, we suggest you join the Wakefield Community Council and attend the meeting when they consider the plan.

If you're interested in the project and want to be involved in its design and delivery, you can volunteer to Focus Wakefield to be the Project Manager or a member of the project team.

If you want to review the project's design and have a say in what's being proposed, then call or email us and let us know that you want to be consulted. That way we'll know to involve you in considering the design.

We're always looking for people who want to contribute something to our community. If you're interested in contributing to the project and/or being involved in doing the work, contact the project manager.

Finally, if you're interested in the ongoing running and care of the event, improvement or service after the project is finished, the project manager would love to hear from you.

We hope this gives you a sense of how we plan and deliver our projects and how you can be involved.

To contact Focus Wakefield call Diane 541 9725, send us an email focuswakefield@gmail.com or post a letter in one of our drop boxes at the Village Tearooms or at the Four Square.





Emma Marshall
Solicitor

For all your legal needs.
I can meet you locally by arrangement.

smythes LAWYERS

Emma.Marshall@smytheslaw.co.nz. T: 03 546 8750

Focus Wakefield: Join us?

Are you interested in being part of Focus Wakefield, to contribute to our community's well-being and prosperity and to retain Wakefield's special character? If you are interested in volunteering, you may want to consider some of the opportunities we have.

We are looking for enthusiastic people for the following roles:

- Secretary
- Ways and means
- Wakefield annual event/celebration manager
- Project managers
- Initiatives coordinators

Here's the detail.

Secretary

We're looking for someone to manage our calendar, agendas, minutes, correspondence, and paperwork. You love organising, meetings and writing; and you're a wizard with filing. If this sounds like you, contact us.

Ways and Means

Are you the person to look after our sponsors, raise funds, win grants and secure "in-kind" contributions such as materials, equipment loans and such like for our community? We're looking for someone who loves to build relationships and networks, present opportunities and make the deal. Interested? Call us today.

Annual event/celebration manager

We're about to start designing an annual event/celebration for Wakefield that brings the community together, provides fun and entertainment for residents and visitors, and opportunities for fund raising by groups in our community. We want to find someone to lead the team to design, develop and run this event. You're good at communicating, organising and coordinating, love the buzz of the build-up to the big day and the satisfaction of "it going right on the night". If you like to make things happen, let's talk.

Project managers

The project manager is the person who takes the idea and leads a team to create the design, consult with people, organise the approvals and inputs, and then oversee the work and its completion and celebration. Are you the organiser and manager that your family, friends, and colleagues turn to make things happen? If you're the "go-to" person and are looking for a project, come and talk with us.

Initiatives coordinators

We're here to facilitate community-wide engagement and community-led development in Wakefield. This means people call us to help progress their initiative and to get community involvement. We're looking for people who can work with these people to advise them on how to get their initiatives up and running and get the necessary community involvement and engagement. You're the reliable advisor who knows the ropes (we'll teach you these) and likes working with people to make certain things go well for them. Sound like you, contact us.

If any of these sound like you, please phone our chair, Lynne Scanlen 021 0231 6121 or drop an email to us at focuswakefield@gmail.com.

Chateau Rhubarbe

CAFE - BAR - PIZZERIA

Why not come down for a social drink or pizza on Christmas Eve and New Year's Eve?

Opening Monday 24th December & Monday 31st of December from 9.30am – till 9.00pm

Now open every Thursday night until 7:30pm for Pizzas

Wakefield School & Community Pool Opening Day

The Wakefield School and Community Pool is proving popular again this season with both school students and the community enjoying the novelty of swimming as the weather warms. The Pool opened on Sunday November 4. Lots of fun was had on the day as can be seen in these pictures. The inflatable occupies almost the entire length of the pool and is a real highlight for children (and some brave parents). The day was made possible by the hard working Pool Committee, and other supporters. The Committee would like to thank our local butcher and our friendly Caretaker Bruce who together provided the sausages on the day. We would also like to thank Ged from Viaduct Nelson for free eftpos facilities for the day and John and Wendy Ross from Hotwash for the loan of a waterblaster so that we could get the pool ready for the season. Thank you also to our local posties Matt and Jill for delivering the flyers advertising the open day.



Wakefield school students have started swimming with their class almost daily. Karyn Young, a local swimming teacher known to many Wakefield families, is running swimming lessons. Further information is available from the school or contact Lydia Ivisser@slingshot.co.nz. Keys are still available to purchase (from Wakefield School 8.30am to 3pm, cash or cheque, no eftpos) and now cost \$100. Senior citizens pay \$55 and volunteers pay a reduced rate of \$70.

Young Swimmers
Swimming lessons available

Competent Swimmers
School age and kids fitness programme

Phone Karyn 541 8190
to book for intensive holiday programme or term 1 lessons



EXCITING LOCAL LISTINGS



17E Martin Avenue, Wakefield
Sunny 3 bedroom home in a great location, large deck, single garage + off street parking



9 Turner Place, Wakefield
Flat 1188m2 section in a peaceful & private setting, title available, services to site and ready to build

Call me to view these exciting properties or for free advice on marketing your property including a no obligation appraisal.

Grant Chaney 541 9097 24 hrs

Your Local Real Estate Expert



Ray White

News from Wakefield School

Athletics

by Jordan and Kate

This term the Whitby and Arrow Syndicate students are preparing for the Waimea Cluster School Athletics Day at Saxton Field in week 7. Jordan and Kate from Room 2 asked some other students what they thought about athletics.

Dylan said... "My favourite event in Athletics is high jump because I like doing 'Frisbee flops' (Fosbury flops). I like it because it is fun and energetic. I would love to go to the Olympics and compete in long jump. My favourite athlete is Yohan Blake."

Finn said... "My favourite event in athletics is the relay because I like team sports and I love to sprint. I like athletics because I like outdoor education and sport. I think athletics is great fun and it keeps you fit. I would love to go to the Olympics and compete in the relay and I would win the gold medal. My favourite athlete is Usain Bolt because he is an inspiration to me to run faster."

Dominic said... "My favourite event in athletics is javelin. My favourite athlete is Valerie Adams because she is inspiring. I like athletics because it is fun trying. I would love to go to the Olympics and compete in javelin."

Students in Whitby and Arrow syndicates are looking forward to the athletics day. We are all going to have fun and are hoping to do well.



Kate practising discus throw



Jaime at the long jump



Kate and Jaime practising their baton changeover.

Wakefield school kids compete in Run Mahana



Run Mahana is a Half Marathon, 10km race and 5km race which starts and ends at the Woollaston Estates Vineyard near Nelson.

The circuit is breathtakingly picturesque and refreshingly rural (two laps for Half Marathon, one lap for 10km) with the Woollaston Mahana Vineyard 5km taking you through the exclusive Woollaston Estates.

There is also a Mahana Mile for kids and a number of Wakefield school children participated in

Luke & Hayley Hall, Ryan & Brylee Ching and Zeke & Noah Platt all took part and are in the photographs.

Leadership at Wakefield School

by Autumn and Max

This year Sarah Wilkin (Resource Teacher of Learning and Behaviour) has been running a Leadership Programme. The programme ended with the Leadership programme students organising an afternoon of activities for some of the younger children.

The leadership programme will hopefully keep running. Thanks to everyone involved in the programme, especially Sarah Wilkin.



Isabella, Leroy and Alex Room 9



Eli Room 9



Alanta protecting herself from an approaching water balloon



Johnny Room 9

The Solar Eclipse

by Zia and Jade

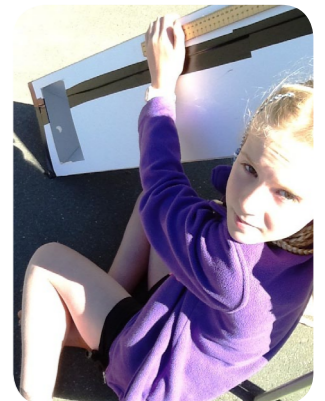
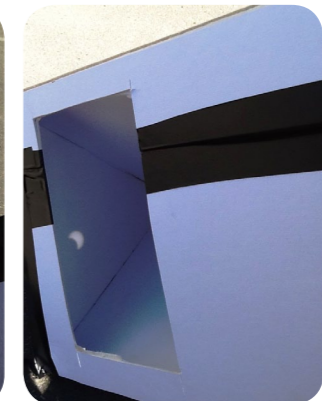
Wakefield School children were amazed at the spectacular solar eclipse that occurred on 14th November 2012. The partial eclipse made school students gaze upon the beautiful sight.

Some students made devices to view the eclipse such as welder's glass viewers and projectors. Some had special glasses. The children had different opinions of the eclipse.

Reid aged 5 said

"I felt happy. I liked the middle because it looked like a massive giant had got hungry and nibbled a bit of the sun. It was scary and dark. I can't imagine how Australia felt having light then darkness."

Ariyah aged 11 exclaimed "I made an official head mask so I didn't get blinded. It was awesome."



SCHOOL HOLIDAYS - This information has been taken from School websites
Current 1st December 2012

WAKEFIELD SCHOOL

Last day of school for 2012:

Thursday 20 December

Buses run at 12 noon and children should be collected at this time also

School starts back:

Thursday 7 February

WAIMEA INTERMEDIATE

Last day of school for 2012:

Thursday 20 December

School starts back:

Thursday 7 February

NAYLAND COLLEGE

Last day of school for 2012:

Friday 7 December

School starts back:

Monday 28 January

NELSON COLLEGE

Last day of school for 2012:

Thursday 6 December

School starts back:

Thursday 7 February

WAIMEA COLLEGE

Thurs 6 Dec - Last day of school for 2012

School starts back:

Mon 28 Jan - Years 9, 11 & 13
Tues 29 Jan - Year 10 & Special Education
Wed 30 Jan - All year levels

Mon 4 Feb - Nelson Anniversary Day
Tues 5 Feb - School Closed
Wed 6 Feb - Waitangi Day

NELSON COLLEGE FOR GIRLS

Wed 12 Dec - Last day of school for 2012

School starts back:

Mon 28 Jan - Senior Re-enrolment
Tues 29 Jan - Years 7, 8, 9, 13 and all new
Wed 30 Jan - Years 10, 11 and 12

Mon 4 Feb - Nelson Anniversary Day
Tues 5 Feb - School Closed
Wed 6 Feb - Waitangi Day

ANTIDOTE APPLIANCE REPAIRS LTD



Servicing all major brands of whiteware.

TIM LLOYD
79 Treeton Place
Wakefield
antidote@ihug.co.nz

For warranty, service or second hand sales call:
03 541 8877 or 021 1601 004
www.antidoterepairs.co.nz

Community support for kids activities at Wakefield School Gala

The Wakefield School PTA would like to apologise for the oversight in not thanking all of the individuals and businesses who made sure there was a lot of fun to be had by children at the recent Wakefield School Gala.

Our apologies that the following businesses and organisations were not mentioned in our article last month about the Gala. Your contribution was greatly appreciated and definitely aided in the success of the gala. It provided a lot of enjoyment for all and ensured children had a wide variety of activities to participate in.

Our sincerest thanks to:

Town and Country Vet, Enviro Horticulture, John Macbeth, PK Engineering, Wakefield Volunteer Fire Brigade, Nelson Fire Brigade, Wakefield Toy Library, Wakefield Steam Museum, NBS, Mitre 10 Mega

And once again we would like to thank all the parents, grandparents, and other volunteers from the Community who gave so generously of their time.



WOMENS BIZ

Women from Tapawera, Wakefield and Brightwater were welcomed to the home of Sandra Nicholls at Tapawera where we were treated to presentations on two very different businesses.

Karen Wason, a Reiki practitioner and educator practitioner, gave us many insights into our emotional bodies, feelings and spiritual wellbeing. A lot of food for thought... Then Karen Ward from Social Media Sorted gave us a brief run down on Social Media and how it can work for and against you, and how to make the most of it. I do mean brief rundown, as this is a huge area that continues to grow, and for many of us is just mind boggling. Thank you very much to both of the Karens for a thought provoking and informative evening. Thanks also to Sandra for the hospitality.

The November meeting was held last Friday and will be the final one for the year. We aim to get together again on the last Friday in February. If you are in business or are simply interested in what other woman in business are up to then come along.

For any queries contact:
Justyne on hairfairywholesale@gmail.com Ph 5224488
Sonia on allaccountsmatter@gmail.com Ph 5419005

Wakefield Community Council

We have been so delighted with the Focus Wakefield initiatives. The energy they have put into consultation and planning has been wonderful, and all of it done in the spirit of volunteerism which is so heartening to our Community. We thank all who are involved in making these things happen. Window on Wakefield's first edition was one such landmark.

Work is underway on a website, and beautification of Edward Street as the cycle-way zooms up towards us at a great rate of knots. It is noted that cycle-ways are great, but cyclists have to stick to the road where there is no cycleway path available. The relationship between the Community Council and Focus Wakefield is the subject of an amendment to the council's rules which we will propose at the December meeting.

Other issues covered at the meeting were: the Civil Defence plan, unregistered motorbikes heading off-road through the village, and noting that no motorbike signs are pleasingly back up on the railway reserve.

We continue to seek to upgrade the mural on the chemist shop wall. Our next meeting is on the 11th December 7.30pm at the Worship Centre Lounge.
Chairperson: Rev.d Allan Wasley

**35TH ANNUAL
WAKEFIELD CRAFT FAIR
WEDNESDAY 2ND JANUARY 2013**



**8.30 - 3.30
HELD ON THE
WAKEFIELD VILLAGE GREEN
AND IN THE WAKEFIELD HALL
OVER 60 STALLS
DRINKS AND FOOD AVAILABLE**

Help Needed



**Tasman Skate Park
Tour on the Green**

12th January 2013 10am to 1pm
help needed to distribute flyers and other tasks,
email [windowonwakefield@gmail.com](mailto>windowonwakefield@gmail.com) or
phone 541 9005

Community Aerobics & Pilates Classes

6 weeks of casual classes in the St John Worship Centre, Edward St,

from Thursday Dec 27th – Thursday Jan 31st.

Regular timetable starts February 14th 2013.

Rock up, bring your rellies and visitors, and work off the Christmas pud! Aerobics starts 8.30am while it's cool. Shoes necessary for Aerobics. Bring a towel for Pilates.

Thursday 8.30am – 9.15 **Aerobics** (the old fashioned kind, with great music).
Thursday 9.20 – 10.10am **Pilates** (beginner level with advanced options).

FEES.

*Single session - \$8.00. Two sessions (Aerobics and Pilates) - \$13.00 for both.
If you commit to the full six weeks, discounts apply, talk to Lynda ☺.*

Contact Lynda for more details 5432268, 027 222 1491, lynda@hht.co.nz

Heart To Heart

Opening to more Love

What is Love? How do we bring more Love into our life? How can we connect with Love in a way that transforms our life? In recent years I've been exploring Love in search of answers to these very questions and I'd like to share some of my most exquisite findings.

We connect with Love by perceiving life through our heart, not our mind. Love is an essence, an energy, a substance even, with which we connect. Our heart is the doorway through which we can make this connection. We mostly know this but in our society where the intellectual is applauded and the value of the emotional and spiritual is downplayed it's easy to lose sight of what we know intuitively. Through this doorway I connect with a Love of life, the Love I have for myself, other people, my pets, humanity, the planet and more. There are no boundaries to Love.

Furthermore, when we surrender to Love, Love can live us! Knowing this reminds me to trust and to let go. It reminds me to come back to myself. It reminds me that when I feel overwhelmed with feelings and out of balance I just need to acknowledge it, allow 'what is', and Love will attend to it. My experiences of allowing in this way have shown me that Love has its own timeline and this is something we can trust even when the timeline feels too long!

Letting Love live me reminds me that I am not alone and that when I seek to bring something into my life I am supported by Love. Yes I have to be clear about my needs and take action to ensure they are met. I need to be clear about what I want to create in my life and take action in alignment with this. Yet if I stay too long in action and try to force something, and keep on trying even when it feels too hard, I know that I am getting in my own way, as well as the way of Love. Love cannot do what Love does. Trying to control all aspects of our life turns out not to be the most effective pathway to creating a joyful life.

Letting Love live me is an invitation. It offers "where would you like me to support you today?" We can respond by directing it with our intention. We can direct Love and let IT attend to what is needed, because it knows, it really knows.

Letting Love live me reminds me that there is something very special about life. I feel there is a part of me that is a song to be sung and a dance to be danced. Letting Love live me reinforces that I am part of something so much grander than our physical world. And with such power at its finger tips why would I not LET LOVE LIVE ME?

For more information about emotional and spiritual wellbeing see Karen's website www.karenwason.com



Written by Karen Wason

Sheila Kennard cert BRT

- Bioresonance Therapy
- Australian Bush Flower Essences
- PSYCH-K

Bioresonance may help in the following ways:-

- Boost The Immune System
- Assist With Hormonal Balance
- Boost Energy Levels
- Help With Sensitivity To Allergens
- Help Control Nicotine Cravings
- Quit Smoking
- Help Control Food Cravings
- Weight Loss
- Boost Metabolism

Special Introductory Offer:
Come and experience Bioresonance Therapy and find out how it may help you
30 mins for \$30
I look forward to meeting you.

For more information contact
Sheila Kennard
115 Eighty Eight Valley Road
Wakefield, Nelson
Tel: 03 541 8860 or 0273644717
Email: sheila@yworrie.com

WELLS RURAL POST

Contact Matt & Angie Wells for all your RD2 Wakefield postal needs Including

- Prepaid Envelopes
- Stamps
- Courier Items
- Local freight from Wakefield, Dovedale and Tapawera.

Prescriptions form Wakefield.

Phone 541 8177

Ph 03 541 9641

Making Your Business Stand Out From The Bunch

Design Printing Apparel Branding Promotional

GET ALL YOUR PRINTING, PROMOTIONAL & APPAREL AT ONE CONVENIENT PLACE

WWW.WAKEFIELDPRINT.CO.NZ

- *Planting projects
- *Landscaping projects
- *Arborist work
- *Tree felling
- *Laying of pavers
- *Backpack spraying
- *Hedge trimming
- *New establishment of lawns & Lawn care
- *And much more green care of your property

This is done by a trained arborist and nurseryman with many years of experience in plant production and the landscape business

contact MORTEN for a free quote
Ph: 021 206 9914 or 541 86 85
email: mortenlausen@gmail.com

Full insurance cover while all work is being done

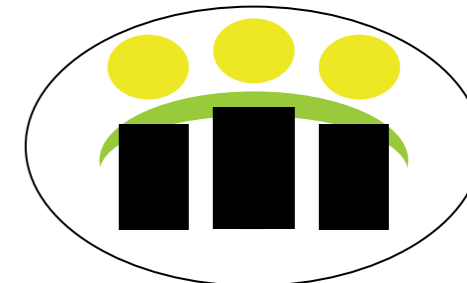
Wakefield Health Centre



Introducing the General Practitioners:

- Tony Eames** Started working with Dr Ted Bassett in 1990 and they both moved into the Health Centre in August of that year. Over the last few years Tony has developed a real interest in Lawn Bowls and is a dedicated member of the Wakefield Bowling Club.
- Peter McKenzie** Pete bought Dr John Davis's Practice in 1990. Now that Pete's children have grown up and their activities don't take so much time, he now has time to pursue his own fun activities – running, tramping, kayaking, you name it Pete will give it a go. Watch out for him on the Coast to Coast in February.
- Audrey Vickerman** Audrey was the first female GP to the Health Centre. Audrey has an interest in Women's Health. She is a keen trumper, gardener and enjoys travel.
- Pip de Hamel** Pip joined the GP team in 1992. Pip enjoys all areas of general practice. Pip has four sons and is still very involved in supporting them in their various schooling and sporting activities.
- Mark Fry** Mark joined the Health Centre in 2010. He brings enthusiasm and new ideas. He has a passion for minor surgery and offers a local vasectomy service. Mark enjoys the outdoors.
- Eloise Fry** Eloise joined the Health Centre team this year. She enjoys working with children, adolescents and has an interest in women's health. She is a keen cyclist.

Watch out for Mark and Eloise as they zoom past you on their home designed and built electric cycles!!!!



Wakefield Health Centre

Surgery hours:

Monday to Friday 8am – 5:30pm

Wednesday 8am – 7pm

New Enrolments Welcome

Phone 541 8911

12 Edward St Wakefield



Kate West BPhy

Mary Caldwell

Credentialed McKenzie Therapist

Back, Neck & Shoulder Pain

Sprains and Strains

ACC TREATMENTS ★ ACCREDITED PRACTICE

WAKEFIELD HEALTH CENTRE

Edward Street, Wakefield Phone 541 8911

On The Beat

Hi everyone

We are fast approaching the end of the year.

Firstly a big thank you to everyone in the community for the support shown over the proposed restructuring of the police numbers in your area. The Wakefield station is going to keep the same amount of staff and is not going to be affected by restructuring at this stage. Again thank you for your support.

Its that time of year when we are starting to plan our summer holidays. If you are heading on a trip over the school holidays then make sure your car is up to scratch; check the tyres, brakes, wiper blades and if you're not sure about any of these things, then take them to your local garage for a check and always drive to the conditions. With summer coming up and more people on the roads, there is the potential for an increase in motor vehicle crashes. Keeping ourselves safe on the roads is going to be a key focus for us here over this period, with Pete and myself having a very visible presence.

On a good note we have noticed a reduction in the number of motor vehicle crashes that we have had to attend this year, and we have had some pretty harsh conditions to deal with on the roads so it is an excellent result - keep it up.

One thing that I would like to bring to your attention is that recently we have had fuel stolen from skid sites and machinery parked in those sites. If you are out and about and see something suspicious, note down the registration and vehicle type and let us know. Certainly with the price of fuel going up, things like this may become more frequent. We have recently caught three people stealing diesel from a skid site. Thanks to the help of the public who got the registration number.

We have a great community spirit in this area so let's keep it going - keep the information coming in to us.

Cheers
S/Const Marty Tutton
Wakefield



Wakefield Playcentre Police station visit



You and Your Dog
Educate • Understand • Bond

Reward Based Training
Kinder for dogs, enjoyable for owner

Group Training Classes
Personal Home Training
Dog Walking
Dog Bite Prevention
- Education For Children



Vikki Pickering
Dip. CBST
03 541 9752
027 513 8879
youandyourdog@hotmail.com



www.youandyourdog.co.nz



Wakefield Volunteer Fire Brigade Report

Well here we are in December already!! Another year nearly done and dusted. This month we have a few things to share with our community.

When the siren goes...

If you happen to be out walking the dog or are the kids that play on their bikes between the station and the BMX track, please, when the siren goes, make sure you are right away from the station entrance and car park area. We have firemen arriving from all directions and as we found recently a group of kids standing right in the way of cars trying to get into the car park to attend a callout. This is stupid and dangerous. We do not want to have someone hit accidentally on station grounds so please keep the area clear when the siren goes - thank you.

Christmas characters on the loose...

On the night of the 24th November, if you happened to have been out for an evening stroll and came across a colourful collection of Santa's, elves, snowmen, reindeer, and candy canes making their way down Edward Street and thought "what the ..", no need for alarm or to change your medication. It was just us crazy folk at the fire station making our way down to the Wakefield Hotel for dinner as part of our Christmas do. Hopefully next month we will have photos to pop in and see who you recognise.

Donations

We would like to say thank you very much to the people in the community for their donations to the brigade. Every bit helps regardless of size. What happens with donations is they are all kept separate in a bank account until we find something the brigade needs that won't be funded by the Fire Service. At our last meeting we decided that another automated blood pressure cuff for the rescue tender would be an ideal piece of kit to have. The great thing about these is that all our firemen can use it to obtain a person's blood pressure, as taking one manually takes a bit of practise and some of our guys are a bit hard of hearing. This way it's quick and accurate. So thank you once again for your contributions.

Water Delivery

Every few weeks we get a request to deliver water to private properties for many reasons. Unfortunately we are not able to deliver water as we are not licensed to do so. There are registered water delivery companies in the area that can do this for you.

Experiences from one of our crew (Written by Sue Goff)

phew! They say you're never too old to learn and on 15th November 2012, I learnt a whole heap of new skills and also a whole heap about myself. I joined the Wakefield Volunteer Fire Brigade two years ago with my hubby Stu. He'd been in the brigade in the UK for 12 years so he was confident and had multiple skills but me..... I was just very keen to give back to the community that had welcomed us and very excited at the prospect of being a fire-fighter!

For those of you (and I hope there are a few) who have thought about joining us and then thought - I wouldn't be able to do that or - I'm too old or - I'm not fit enough - well, hey, the New Zealand Fire Service, trainers and brigade mates have shown me that you definitely can. I have just completed the final component of my training which was the 'Breathing Apparatus' part. Everything you learn with the Fire Service challenges you physically and mentally and pushes you to be the very best you can but this was possibly the most challenging for me personally. I feel ok with entering a burning structure because everything you do is as a team and you've got each other's backs - and I've always felt comfortable wearing the equipment although it is bulky and heavy, because it will keep you safe while you get on with the job - but it's all about so much more than that. You have to understand how the fire behaves and changes, you have to be able to search the building using the correct and most efficient and safe method and you need to know how to rescue a trapped person and get them and your team back out safely. That's a big responsibility and you can only achieve this as part of a team and so that's how we're always trained.

Last week, my awesome fellow Fire-fighter and buddy Dot Ashton (who you will all know) spent the day sweating it out with me so I could complete my training (not a pretty sight - lol - nothing glamorous about Fire Service training). Under the supervision and instruction of our trainer Paul Manson (Paul, Mandy and their lovely daughters have recently moved to Wakefield so welcome guys - lovely to have you here) - Dot and I rescued 80kg and 40kg manikins from the tower in Nelson Fire Station, carried them up flights of stairs and back down again, crawled through tunnels, dragged hoses through the building and back out again all the time wearing full BA equipment and with the building fully heated to replicate realistic conditions. I was taught the correct entry methods for getting into a burning building, how to cool and control the entry point and how to keep myself and my buddy as safe as possible at all times. Paul also spent time teaching me to control my breathing and prepare myself mentally for the tasks ahead. It's not all about the muscle and strength - adrenalin will kick in to help with that - but if you don't have respect for the situation that you're going into and the ability to overcome your anxieties you won't be able to perform at your best. So now, it's all come together. The training is always on-going along with new skills and experiences for all of us, but me.... I have learnt so much about myself, about what I'm capable of doing and about being a real team player. I kid you not, I am not a brave person but I am part of the most awesome organisation in New Zealand and quietly proud of what I have achieved.

Calls for the last month

Call		
127, Tue 23/10	17.27	Medical Assist
128, Wed 31/10	06.52	Medical Assist
129, Sun 4/11	13.21	Motor vehicle crash, a truck carrying vegetables overturned at Doctors Creek, Wakefield crews were released but crews from Tapawera remained on the scene for several hours assisting police with the clean up
130, Sat 10/11	13.31	Wakefield and Brightwater crews dispatched to investigate smoke in the Pretty Bridge Valley area
131, Sat 17/11	16.30	Alarm activation, Ecopine Eves Valley
132, Wed 21/11	13.17	Medical Assist, Lake Rotoiti
133, Fri 23/11	10.48	Motor Vehicle crash, Main Road Hope
134, Sat 24/11	13.28	Rubbish fire, Wakefield South, this was an unpermitted burn so it was extinguished by the crew
135, Sat 24/11	14.58	Call to assist police with searching for a missing child, crews used private motor vehicles to search the river areas between Wai-iti and Teapot Valley. Thankfully the child was found safe and well in a forest area by the police

On behalf of the Wakefield Volunteer Fire Brigade, have a safe and happy festive season. We hope to only see you in a social environment not in an emergency.
Simon Ladley
CFO, WVFB

Hill Top Native Nursery

Propagators and Growers of
New Zealand Native Trees and Shrubs
Open for sales by appointment

Owners: Bevan & Rachael Hart
74 Eighty Eight Valley Road
Wakefield, Nelson 7025

Phone 03 541 8763

Phone: Bevan 027 541 8763

Rachael 027 286 7927

Fax: 03 541 8764

WAKEFIELD VILLA

Tearooms & Gift Shop



WE SERVE DAILY
FINE COFFEE, TEA'S
DELICIOUS CAKES
& LUNCHES

14 WHITBY WAY, WAKEFIELD

TELEPHONE:
541 9168
7 DAYS A WEEK

Wakefield Playcentre

We have been busy in-session as well as out-and-about these past weeks. We recently visited the Wakefield Police station and the kids got to dress-up in all the police gear, have a seat in the police car and get to see the lights flashing and the sirens going. Thanks Peter for having us all. Bryony came and visited us with 'Buttercup' her two week old piglet for all the kids to have a look at and a pat. We have been to the Wakefield Rest home with Paul from the Methodist church to sing everyone some songs.

Our new vegetable garden is being enjoyed and there isn't a threat of our plants going dry with the kids taking care of the watering. We have been on a 'bug hunt' where the kids have had to find and match the bugs that were on their sheets. They all managed to find lots of different creepy crawlies. We have been making paper mache face masks, which the kids have enjoyed making from scratch to completion. And we have our very



Josh watering Playcentre garden



Olivia trying out being a policewoman, with Payton in the background

own 'Story Gran' who pops in and reads books to the kids whilst they are having their morning tea.

Playcentre has to raise its own funds for all our equipment and supplies so we really appreciate the grants that are available to help us out with some of these

costs. We have had four major grants that have been successful and we would just like to publicly acknowledge and thank these groups:

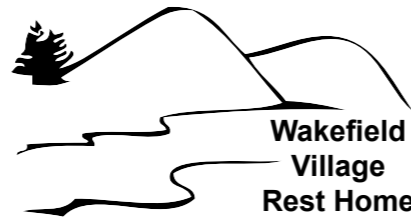
1. Pub Charity Charitable Trust who has enabled us to purchase two new cameras, where the photos are used in the kids profile books. We will also have new road signage paid for by Pub Charity which should be up very soon.
2. The Canterbury Community Trust who has enabled us to get some new play equipment and a new washing machine to replace our old one that no longer goes.
3. Network Tasman Trust who has enabled us to purchase bark for our playground area.
4. Tasman District Council who has enabled us to purchase art and craft supplies.

Special thanks to Paul and the team at Siggies Signs in Richmond, Noel Leemings Richmond and Wholesale Landscapes. These businesses have all looked after us and given us exceptional service.

On the 9th December the Motueka A&P Show is being held and we will be there with a dedicated play area for the under 6's. We will be selling playdough, cookbooks as well as raffling off a Christmas hamper. This hamper has well over \$300 worth of things for the whole family – from an ice-cream maker, a colour-in cardboard playhouse, games, vouchers and much more. Lots of support and donations have come from our local community which we really appreciate and will mention in more detail in next month's newsletter.

So come and support us at the A&P Show or if you are interested in purchasing a raffle ticket or cookbook please contact us directly.

Playcentre sessions are run Monday to Friday from 9.30am to 12pm. The first three sessions are free and WINZ subsidies are available. If you want to come and have a look at Wakefield Playcentre give Wendy or Jen a call on 541 8866.



Wakefield
Village
Rest Home

Well it finally feels as if summer is well and truly here! Christmas is just around the corner, and here at Wakefield Rest Home we are getting ready for the festive season.

To help us get in the festive mood we were treated to a fantastic visit on Thursday 15 November from a delightful group of children who attend Wakefield play centre.

Staff and residents alike were regaled with lively song and dance which was accompanied by the very talented Paul Tragurtha on guitar!



We have lots of Christmassy events planned this year – the highlight being our own Christmas drinks and barbeque which will be held on the 10th December. This year our entertainment will be provided by the exciting and vibrant pianist and performer William Fairbairn from "NZ's Got Talent" fame! Anyone who would like to call in and enjoy a drink and nibbles with us is more than welcome – we plan to kick off about 3pm.

The staff and residents at Wakefield Rest Home would like to wish the Wakefield Community, one and all, a bright and beautiful Christmas, and a relaxing New Year spent with family and special people.

"Happy, happy Christmas, that can win us back to the delusions of our childhood days, recall to the old man the pleasures of his youth, and transport the traveler back to his own fireside and quiet home!" Charles Dickens

The Way We Were

EARLY WAKEFIELD - Written by Joy Stephens

Situated in Waimea South, Wakefield's first European immigrants, who settled in 1843, found plentiful timber, arable land and very few Maori, who had fled the area in Te Rauparaha's 1828 raids.

An 1842 map by surveyor, John Cotterell shows much of Waimea South was well wooded. There was great demand for timber, both locally and as an export, and soon thousands of metres of timber were leaving the area each week.

Small stores sprang up to cater for the rural community. They stocked food and farm necessities, household goods, clothing and luxury items. Thomas James Smith and his wife Grace arrived in Wakefield in 1846 and set up a small general store. By 1865, there were three stores in Wakefield - Hodgsons, Hoopers and Paintons.

It wasn't long before hotels providing accommodation and community hubs were established. The Wakefield Arms was established by William Plank in 1847, with the Nelson coach service collecting and discharging passengers and goods at the hotel. In 1867, stock sales began in yards behind the hotel. The Wakefield Arms was the centre of the Waimea South Steeplechase, a popular event for many years, which began in the summer of 1868 and saw horses entered from all over the Waimeas.

While Wakefield was developing into a busy rural centre, there was some frustration from locals about getting on the map. In 1856, a letter signed 'One of the Old Settlers' complained about the inconvenience caused by incorrectly delivered mail. The writer requested that the boundaries of the village be publicised.

In 1878, a letter to the Nelson Evening Mail appealed to Wakefield people to agitate for a telegraph station at Wakefield before it was too late, saying that if a 'one shop village' like Brightwater was to get a telegraph office and station master, Wakefield was also entitled to one. The Wakefield Post Office was built in 1909.

Wakefield School is the oldest school in continuous use in New Zealand. Founded in mid-1843 in the home of Mary Ann Baigent, it was soon crowded and by November 1843, John Wilkinson had established a separate school under the auspices of the Nelson School Society.

During Wakefield School's 169 year history, five additional schools have been incorporated, they are: Eighty-Eight Valley School, Pigeon Valley School, Spring Grove School, Totara Bush Household School, Te Arowhenua Household School, Wai-iti School (formerly Upper Wakefield) and Foxhill School.

St John's Anglican Church (1846) is the oldest standing Anglican church in the South Island. Many of the district's pioneers, such as Edward and Mary Ann Baigent lie in the churchyard cemetery.



Hodgsons Store. Wakefield. Waimea South Collection

southfuels
Spring Grove

Compare our Battery Prices
You will be SURPRISED



Main Road North Spring Grove, Wakefield

Ph: 03 541 8444

We are open 7am - 6pm Mon - Fri

8am - 2pm Saturday

Closed Sunday



St John's Catholic Church was established at Upper Wakefield in 1870 and the Wakefield Methodist Church was opened in 1919.

This story is taken from www.theprow.org.nz with photos from the Waimea South Historical Society collection. These can also be seen at <http://ketetasman.peoplesnetworknz.info>



Wakefield town, 1880. Waimea South collection

Town and Country Talk

Last issue we talked about the increase in pesky parasites as we approach summer. This month we look at other warm weather hazards for our small (or not so small) furry friends.

GRASS SEEDS

We are already seeing dogs with grass seeds (especially barley grass seeds) needing to be removed. The typical places we find barley grass are between the toes, in the 'armpits' and in the ears, especially in longer-haired dogs. Usually you will see a small oozing hole in the skin that the dog is constantly licking or, if in an ear, lots of head-shaking and tilting the head to one side.

The treatment is to remove the seed, which normally requires an anaesthetic, followed by a course of antibiotics. Surprisingly seeds are not always easy to find when buried under the skin. Grass seeds in the ear are usually easy to see and remove but they can rupture the ear drum resulting in a long healing process.

How can I prevent grass seed problems?

- * don't take your dog to areas where barley grass (or other long grass that has gone to seed) is present.
 - * trim the fur away between the toes, under the armpits and under the ears.
 - * make it a daily ritual to check the feet and ears for grass seeds.
- It is much easier to remove the seeds before they penetrate the skin!



HEAT STROKE

This can easily occur if an animal is confined to a car in hot weather – even with windows slightly open the temperature is easily able to exceed safe levels within minutes.

We also see heat stroke when dogs are exercised on hot days, especially in the middle of the day. Hunting dogs are always at risk of heat stroke when hunting in warmer weather. Some breeds that have reduced breathing capacity such as pugs and bulldogs are also more prone to heat stroke.

How can I avoid heat stroke?

- * only exercise your dog when it is a cool enough temperature that you'd be happy to run in yourself.
- * never leave your dog shut in the car on a warm or hot day.
- * regular access to water in hot weather is of course essential.
- * if you suspect your pet is overheated, give them cool water baths, or hosing them can help.
- * in extreme cases, contact your vet immediately – heat stroke can be fatal.



BEE STINGS AND BITES

Bites or stings by insects and spiders can happen anywhere on the body and sometimes in the mouth as insects are chased by pets.

What should I do?

- * seek immediate veterinary attention if there is facial swelling, difficulty breathing or if your pet collapses.
- * try to remove the sting immediately if you can see it – tweezers are useful!
- * be careful not to squeeze the skin.
- * apply cool compresses to the area
- * use antihistamine cream or apply a paste mixture of baking soda and water to the sting area



HAYFEVER SEASON!

Pets can display allergic symptoms in the same way that humans do to pollens, plants, dust mites, insects and foods. In spring and summer, the chances of such reactions are increased as plants, flower and insect populations increase.

Typical symptoms of allergy include red, irritated itchy eyes and skin, and sneezing. Allowing rubbing and scratching of skin and eyes usually worsens symptoms and damages the skin and eyes. Secondary bacterial infection can occur which then adds to the itchiness!

Unfortunately we can only manage allergies rather than cure them. We usually give medication to reduce itchiness and control bacteria. Avoidance of the allergen is important but often difficult to achieve. If you see that your pet is scratching and itchy, a checkover at the vets is the best option for treating and controlling the symptoms as well as discussing how best to manage the allergy long term.

Brenda Halliwell
Town & Country Vet



**TOWN & COUNTRY
VET
WAKEFIELD**

Open Hours
Monday to Thursday
8.30am to 5pm

Consulting Hours
Tuesday 9am - 12pm with Brenda
Thursday 9am - 12pm with Paula
(or by arrangement)

541 8974

24 Hour Emergency Vet
544 1200

www.tcvet.co.nz

Lay of the Land

The sou-wester is drying out the paddocks and the bull has somehow got through a fence. Ironically, I'm reading a book by Matthew B Crawford subtitled "An Inquiry into the Value of Work".

Actually, it affirms the worth of trades and crafts – jobs where things are physically produced – and notes that, historically, these occupations have always involved a high level of thinking and planning skills as well as manual dexterity.

"Damned right", I say, as I try to attach the chipper to the three point linkage.

Crawford criticises the loss of manual training (woodwork, metalwork etc) in American schools, and the obsession with computer literacy, the knowledge economy and the need for universal tertiary education. He sees, in the future, a growing distinction between jobs that can be done by long distance communication, and those that cannot. Radiology, accounting, editing and architecture can all be done off shore much more cheaply. On the other hand, you can't hammer a nail, or unblock a drain over the internet. And farming, in New Zealand at least, is still a hands on job.

Kiwis overseas have always been valued for their versatility, lateral thinking and DIY problem-solving skills. In the end, the person who actually gets out and "does it" is more useful than the highly paid consultant in the think tank.

Do what you do do well, boy.

Thoughts from local resident, Philip Calder



Designing and constructing quality homes and gardens since 1984.

For a free site visit and discussion phone Jason Preller

021 167 3803
or 03 541 9141

email: kernowlandscapes@ihug.co.nz
www.kernowlandscapes.co.nz



Higgins Park Coming Events

Sunday December 2nd

"On Steam" and activities day for the district's Cubs and Scouts.

Friday December 14th

Brightwater School Visit

Saturday February 3rd and

Sunday February 4th

Nelson Vintage Engine & Machinery Club Show Camping available

Saturday February 16th and

Sunday February 17th

Visit by those attending the Men's Shed annual conference.

(Date and time to be arranged)

Saturday March 2nd and

Sunday March 3rd

Transport Weekend. Old and new trucks, military vehicles, earthmoving equipment

May

Military re-enactment action day

(Date yet to be decided)

WAKEFIELD QUARRY

Pig Valley, 6km from Wakefield



FOR: Basecourse 70mm
Topcourse 40mm
Topcourse 20mm
Drainage metal 40mm
Landscape Rock
Lime

Truck Available

Limeworks 541 9093
Tony Dick 541 8392 a/h
Philip Dick 541 8666 a/h

OPEN:
MON - FRI 7am - 5pm
No longer open Saturdays

Live Local Shop Local

Profiling a Wakefield business - Helping keep the great businesses in our Village

It's not just about the pies... but the pies are sublime!

It's not just about the pies... but the pies are sublime!

When I tell Nelsonians I live in Wakefield, it's not unusual for them to ask me if it's because I like pies. Luckily, I understand they are referring to our famous award winning bakery, and not just being rude about my waistline. The fine reputation built by the previous owner is something the family run team are proud to have maintained, and their increased range has seen the business grow and grow.



For some regulars, Wakefield Bakery is all about freshly baked bread rolls, or indulgent Blueberry Danish pastries, whilst their biggest fans are probably the early morning truckers who knock on the doors at 5:30am. They buy their breakfast filled croissants and coffee to eat there and then, as well as taking a filled roll for lunch, and a treat of something sweet for later. And maybe the Cantabrians who stock up on pies count as regulars? If you have ever missed out on your favourite flavour pie at lunchtime, the chances are you just followed them in. They buy a dozen pies at a time and sometimes wipe out a flavour for the rest of the day.

So what is it that makes Wakefield Bakery so special? The pies ARE amazing, with ten or eleven delicious varieties, among them the 2011 Supreme Pie Silver Award Winner. You can buy them to eat hot from the oven, or ask for chilled pies to take home and heat later. The range of bread rolls, loaves and Viennas sell out fast too. Lunchtime filled rolls have become so popular that Trish has requested Steven and Dean bake extra French Sticks to meet demand. Or maybe it's the cream cakes, the muffins, the scones or the strudels that we can't get enough of?



The common denominator is the pride that the team put into scratch baking the highest quality products, combined with the pinnacle of customer service. This is part of their mission statement, but what it translates into is freshly baked goods made within 24 hours, served promptly with a smile. It doesn't hurt that prices haven't risen since the team took over in August 2011 either. Trish says their challenge is to offer customers more than they expect, and she is thrilled the entire team share that passion. So when a new face at the door announces they've heard these are the best pies in town, they all look forward to them becoming regulars who say "What I heard was true, now I tell everyone too!"



This time of year is especially busy for Wakefield Bakery, so please place your Christmas order soon, or you'll be standing in Clifford Road crying on Christmas Eve, whilst the rest of us eat all the (fruit mince) pies!



The Wakefield Bakery
2 Clifford Road, Wakefield
541 9787

Open every day (Monday – Sunday) 6am – 5pm
(Only closed Christmas Day, Boxing Day, Good Friday and Easter Sunday)



Summer Fashion Parade in Wakefield

There was a buzz in the air on Wednesday 23 October as ladies, and one brave husband, lined up for the Summer Fashion Parade at St Johns' Church hall in Wakefield. Organised by Waimea Senior Care Co-ordinator Nicola Berthlesen, the afternoon aimed to provide fellowship, entertainment and an opportunity to get a sneak preview of the fashions for this summer. Particular thanks goes to Maryann, from Fashion Central in Richmond, for providing the garments, taking the role of compere for the show and ensuring that our models all looked stunning on the day.



The afternoon was supported by a number of community groups. Thanks to the children from Wakefield School who entertained with singing, dancing and a prize winning speech on the virtues of the mobility scooter. Thanks also to Brightwater Motors, HQ Café and Scissor Art in Brightwater and Wakefield Four Square, Hair Raisers, Chateau Rhubarbe, Wakefield Tearooms and Wakefield Pharmacy for their donations of gifts and vouchers for spot prizes. Finally, thanks to St John Church for allowing the use of their wonderful facilities. If you didn't make this event join us for our autumn parade or keep an eye out for other activities still to come this year. We would love to have you join us.

Winners of the doll raffle were: Emma from Brightwater Music and Movement and Pam, a guest at the fashion show. Please contact Nicola Ph: 021 061 6180 to collect your prize.

Wakefield Welcomes

Wakefield Welcomes... Stephen "Wizard" May & Nessie "Witchy" Bellam. The interestingly named couple have recently moved to Wai-iti after more than 10 years in Christchurch. They shifted to be closer to family in the Nelson region, for their health and to enjoy "stable" ground!

They love that fact that everyone has been so genuinely friendly and welcoming. They think Wakefield village is beautiful and love the surrounding countryside. When they moved to New Brighton from Avonside they thought the locals could teach the rest of Christchurch about friendliness and customer service, but now they believe Wakefield has even surpassed New Brighton.

As keen photographers, they are looking forward to contributing to Window on Wakefield, taking photos through their newcomers eyes around our area (see Stephen's photo of Ella on page 29). Stephen and Nessie are both musicians and artists and they're particularly looking forward to the upcoming Craft Show on the 2nd of Jan 2013.



Window on Wakefield

Introducing the new comers to the our village finding out about what they do and where they come from.

If you would like us to introduce you and your family give us a call 541 9005 we would love to tell your story to the village.

The BMG Mini for Cancer - Bob & Lynne Croy



It all started after we had finished the Relay for Life for which our Wakefield team raised what I thought to be a commendable \$2,500, only to be well out done by another team to the tune of some \$6500.

That got me thinking and I asked our team, what could we do to raise \$10,000? Nobody had any ideas but I recalled the Nelson Rotary raffling a Morris Minor the year before and then I hit on the idea that we should procure a Mini and rebuild it back to new condition and raffle it. Lynne and I would finance it and get our payback from proceeds from the raffle. Easy, I have the mechanical skills and with some enthusiasts in our team we were up to the challenge. I ran the idea past a number of friends and Linda Lucre at the Cancer Society and they all thought it a commendable idea. So now we needed a car to carry out the project. I spent a lot of time on Trade Me but to no avail. We heard about two cars in Takaka so went over there and did a deal for the two of them which I was sure we could get enough from to make one. That evening I received a call from the folks to say the deal was off as

their son had sold them on Trade Me for \$1350 - a lot more than we had done the deal on. It wasn't meant to be.

I then got in touch with the Nelson Mini Club President who after a long yarn told me of two cars that the owners would not sell and gave me the addresses so I could try my luck. I visited the house on the Wednesday and it looked just like what we wanted so I left a note for the owners to phone me. By the Saturday morning I had heard nothing so I proceeded to go back to the house and hope someone was at home. I was in luck, they were at home. I introduced myself and explained what I was about and what I wanted. That was that I wanted to buy the Mini from them, rebuild it and raffle it for The Relay for Life and donate the money to the Nelson Cancer Society. Mrs Christine Johansson thought it a worthy idea and asked me to make her an offer to which I offered her a fair price of \$750 which she accepted with no hesitation. Her husband Ian then told me that they owned Precision Regrinds and so I had my first sponsor. I also found out that the car was a one owner car and that she had bought it from Vining and Scott Ltd in July 1975 and that it had only travelled approx 55,000km and had never had the head off the engine. I paid for the car and picked it up that afternoon. The following day after a fair bit of tinkering around I managed to coax it into life and took it for a short drive - seized up brakes and all. We gave the car a good wash inside and out as it had been sitting out in the weather for nine years. Surprisingly it cleaned up pretty good with no more rust showing than before we started.

At this stage my team of Martin Reid, JB, John Bruce and Dal Stewart, all Wakefield folks, started meeting on a Thursday morning and proceeded to dismantle the car down to the last bolt. This took about six weeks in all, a lot bigger job than I had first envisaged. About this time I had a call from Linda Lucre to say that she had been talking to Tony Bowater and he had told her that BMG would look at coming in on the project to help with parts, but he wanted to talk to me first. I rang him and organised a meeting the following week

with Tony, Linda, Martin and myself. We met in Tony's office and after I explained our plan he said that he had already had a board meeting and the board had given him the thumbs up to proceed. The deal was that we give them naming rights and to have the car in their showroom for some time after we had finished it and they would supply ALL parts. That is all hard parts; wheels, tyres, brakes, clutch etc. This was a huge boost to us as you can well imagine.

About this time I got in touch with the Nelson Mail and arranged to do the first story to let folks know what we are up to. It was decided to do a regular article so as to keep the readers up with what is going on. This was done and since then there have been three articles since we started. The outcome of these articles has been amazing as we have had offers of help from all directions. Chris Tonkin from Lord Auckland Road, an auto electrician, offered his services. We almost had a full team with all trades covered. At about this time I approached Tony Johnson from Sun City Panel and Paint Ltd and he had already decided to help us. In fact he had arranged one of his paint supply companies to supply \$2,000 worth of the best paints to do the job. I then approached John and Wendy Ross from Hot Water Blasting Ltd to see if they would like to do the sand blasting required and came away with a resounding yes. Mortimer's Upholstery have offered to carry out the upholstery, a fairly major job. Smith and Smith will do the glass work. So at this stage we are well on our way.

The car and most of the suspension components have been sand blasted or primed with the suspension now ready for assembly, as Bowater's have supplied the first delivery of parts being mostly suspension, brakes and gearbox bearings and syncro ring kit. We then decided that we needed a trailer to transport the car around when we start promoting the cause and with that I set out to find some sponsors to supply enough materials. Young's Automotive have supplied the hubs, stubs and wheel bearing kit, spring, tow hitch and jockey wheel and all of the electrics that are necessary for a WOF. Fletchers Steel promised and have supplied the steel and ITM the plywood for the base. I managed to score a 5l pot of stain for the ply from Resene in Richmond. Colin Ryder, another Wakefield fellow, then offered to build it for us and 88 Valley Engineers also supplied their knowledge and some steel. Hot Water Blasting Ltd will sand blast the trailer frame and then paint it. It is not all that far from being completed. No cost to us and we will sell it after the Mini has been raffled. More money for Cancer Society.

Our sponsors to date are:
 Bowater Motor Group
 Hot Wash Waters Blasting Ltd - John and Wendy Ross
 Young's Automotive
 Sun City Panel and Paint Ltd - Tony Johnson
 ITM Building Supplies Ltd
 88 Valley Engineering Ltd
 Wakefield Auto Services Ltd
 Fletcher Steel Ltd
 Freeman Roofing Ltd
 Precision Regrinds Ltd

'THE HAIR OF THE DOG PARTY'
 STARRING
★ THE JOHNNYS ★
'The Worlds First and Only Bill Girl, Bill Johnny Cash Band'
LIVE @ BELGROVE TAVERN

LIMITED TICKETS
 TICKET INCLUDES HOT PIG ON THE SPIT SANDWICH
 KIDS 14 AND UNDER FREE
 BRING PICNIC BLANKETS AND CHAIRS
 HIGHWAY 6 JUST 5KM FROM WAKEFIELD

WED 2 JAN 2013 3PM
 \$15 PRESALES, \$20 DOORSALES. TICKETS FROM EVERYMAN AND BELGROVE TAVERN

mediaworks TV | RADIO | INTERACTIVE
 GoldenEdge
 DEVILLE
Nelson Pine Industries Ltd

**DO YOU HAVE UNTIDY LAWNS?
 THEN MOW THEM WITH**

CASTELGARDEN

Briggs & Stratton 13.5hp
 Electric Start
 Hydrodrive System
 Electromagnetic Blade Engage
 Tow Hitch
 Side Discharge

Normally \$3499
 On Special \$2999

Wakefield Auto Services Ltd
 67 Whitby Road, Wakefield
 Ph: (03) 541 8121

mta ASSURED
 CALTEX
 Smartfuel
 Roadservice Contractor

**DID YOUR BUSINESS
 MISS OUT THIS TIME**

**DON'T DESPAIR
 WE HAVE SAVED
 A SPOT FOR THE NEXT
 PUBLICATION
 JUST FOR YOUR BUSINESS**

Give us a call
 541 9641
 or
 Email
 info@wakefieldprint.co.nz

Wakefield Scouts & Guides

Wakefield Scout Gains Highest Award

"We would like to congratulate Tim Green on recently completing his Chief Scout Award. It is the highest award for a Scout [ages 10-14] and tests the young person's skills, leadership, initiative and commitment. Just some of the requirements are planning and running a two night camp with a patrol, working as an activity leader with Kea or Cub pack, completing challenges, gaining recognised First Aid Certificate, attending national events such as Jamboree, along with numerous other activities including a gruelling interview conducted by Zone Scout Leader to discuss their achievements and knowledge. Tim is a valued member of our group. Well done."



Wakefield/Brightwater Guides

Wakefield/Brightwater Guides meet on Wednesday evenings from 6.30pm at Brightwater Scout Den. There are a few places for girls aged 10-14 years in this busy unit which has two leaders who run a great programme for their girls.

Contact: Sarah Arnold 541 9481 or
Josie Macdonald 544 2660

HAZELNUTS

Whiteheart variety - New season (2012) crop

Grown locally in Wakefield

Spray free, Gluten free, Cholesterol free.

In shell, out of shell, or Dry roasted

Cracked and packaged to order for maximum freshness

Phone & Door sales at Hazelbrook
126 Main Rd. South, Wakefield.
Phone 03 541 8901

Also available at Wakefield Butchery & Raeward Richmond
Queen St. Fruit & Veg Richmond & Eat Me Fruit & Veg Nelson

Internet sales on TradeMe and our web site at :-
www.phi-hazelnuts-nelson.co.nz

Guiding in Twin Peaks Rural District

Guiding in Wakefield, Brightwater & Waimea is winding down for the summer break. Most units will be closing the first or second week in December apart from two Guide camps on 8/9 December and 21/22 December. We would ask that all outstanding invoices be settled by then. A big thank you to all our local volunteer leaders and their parent helpers, Secretary Anne and new Treasurer Jacqui - your fantastic efforts running such fun programmes are very much appreciated.

We are in need of a new leader for one Waimea Pippin unit (5-7yr olds) If you think this might be something that would interest you, contact me on 541 9689.

Sue Burrowes
DC Twin Peaks Rural Guides



Wakefield Scout Group

Kea's 6 - 8 years meets Tuesday 4.30 to 5.30pm
Cubs 8 - 10 1/2 years meets Thursday 6.30 to 8pm
Scouts 10 1/2 - 15 years Wednesday 6.30 to 8.30 pm
Adventurers Over 16 years - Various times

Committee Positions Vacant: Fundraising Co-Ordinator, Publicity Officer
Leaders position in all sections. If you have an interest in helping our youth and love to get involved in the great outdoors, we'd love to hear from you.

Contact: Carena Ph 541 8867 or Nick Ph 541 9190



- * Sales from the gate
- * Christmas pre-orders welcome
- * 250 gm Punnets
- * 350 gm Punnets
- * 1kg Punnets
- * 1kg Free-flow frozen



For the Kids

BEAD STARS

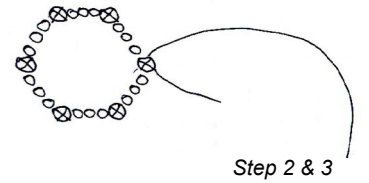
Provided by Christine Grieder

You will need:

- Beads and/or glass tubes or thin straws cut into small tubes
- Approx 0.5mm thick galvanised wire, copper or brass wire [about 60cm long per small star]

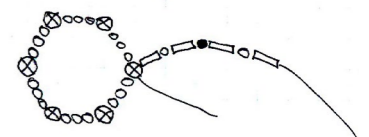
All the stars are done in a similar way. It helps to sort beads in a shallow (white) dish first.

1. You will create one row of beads for the inner circle, and one row of beads for the star pointers.



Step 2 & 3

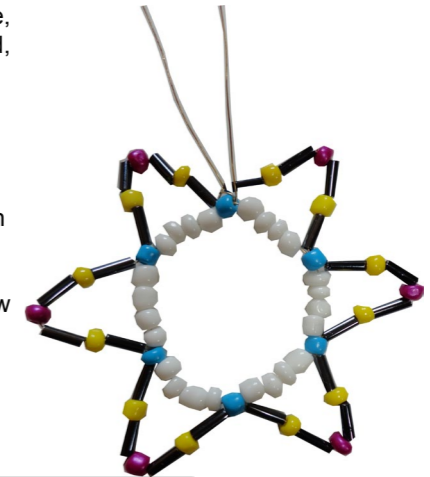
2. Start to thread the beads for the inner circle first. Because it is a 6-pointer star, you need to design the middle divisible by 6. The inner circle for the star shown here is one bead with cross, 3 white beads, 1 bead with cross, 3 white beads.....



Step 4

3. Now you thread the wire through the first 6th division. As shown, it is the bead with a cross.

4. Then you thread the beads for the first point of the star - 1 glass tube, 1 yellow bead, 1 glass tube, 1 red bead, 1 glass tube, 1 yellow bead, 1 glass tube etc

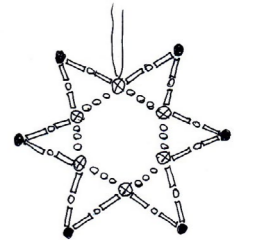


Step 5

5. Then thread the wire through the next 6th division. Repeat Steps 3 - 6 for each point of the star.

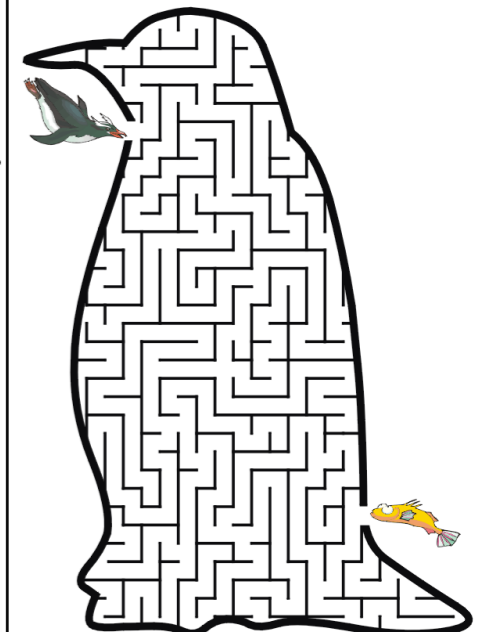
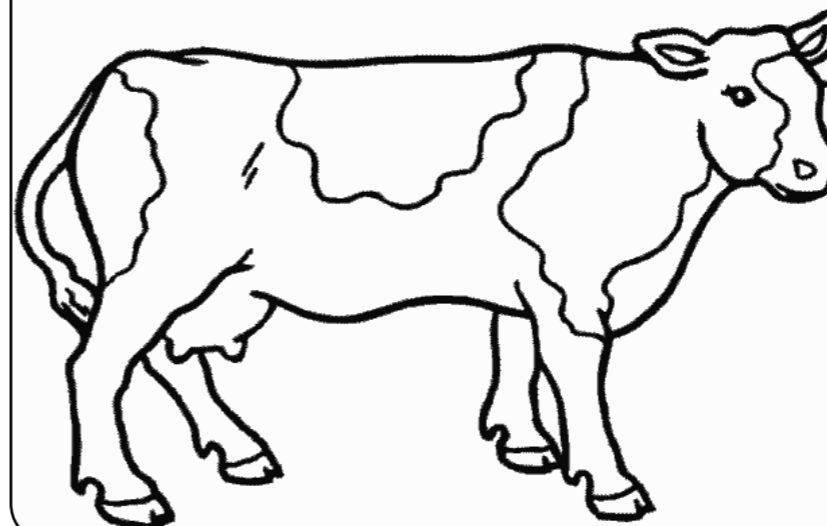
6. The star is finished. Tie up the wire ends and cut them to the length you wish or thread some beads on the wire ends.

You can use these creations as Christmas tree decorations, window decoration or stitch them onto cards.



Step 6

Kids Colouring Corner



Help Penguin find something to eat

Wakefield Trading

Its All About Locals Looking After Locals

Stock Feed for All Animals & Poultry

Pet Food for All Animals & Birds

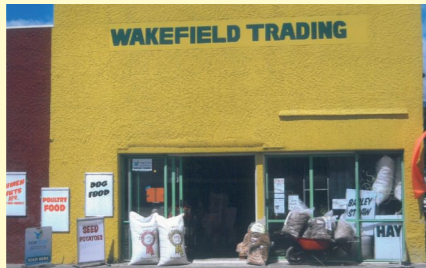
Gardening Requirments

- Seed Potatoes
- Vege plants
- Fertilisers

Wool Ready for Spinning and Gotland Sheep Skins

Dry Pine Firewood and Kindling

And Much Much More.....



Talk to us about how we can help you

**62 WHITBY ROAD
WAKEFIELD
541 8415**



ANYONE FOR TENNIS FOXHILL TENNIS COURTS

Behind the Rutherford Memorial Hall on the Wakefield-Kohatu Highway, exists two tennis courts. The courts are a designated reserve scheduled under the jurisdiction of Tasman District Council and managed by the Foxhill Hall Association, on their behalf.

Being designated a reserve means that members of the public have free access and the right to use the courts for the purpose of playing tennis in daylight hours.

When the school closed, the then Association President, Mark Pullan, and committee negotiated for the transfer of the former school basketball courts into public ownership to Tasman District Council.

The space became a reserve, were painted up for use as tennis courts, and new nets purchased. The asphalt surface of the courts is in excellent condition. Parking is available behind and in front of the hall (to avoid blocking residential access). So make use of this great community asset and grab your racket and head to the FOXHILL TENNIS COURTS this summer!

Contact: Erica Short
Secretary Treasurer Foxhill Hall Assn. Inc. ph 541 8882

Wakefield Plunket Playgroup

Over the November month, Playgroup children and parents/caregiver's have been involved in a number of activities. The parents/caregivers and children were shown how to make hummus and then enjoyed eating it with their morning tea. The children have played with the new toys purchased from the Chalk catalogue. The cars and bikes are now getting fuelled up by the petrol pump.

The under two area has new toys for the children to play with to help with their learning and development through the activities on the equipment.

The two shopping trolleys have been a big hit as they get filled up with all sorts of toys to be wheeled around.

The children that wanted to, wrote a letter to Santa and then we walked down to the local post box to post them. We have visited the Wakefield School library. A trip to Founders Park to ride on the train along with Playcentre was enjoyed by all.

What's on until the end of year:

- Making Christmas decorations to take home.

Our last session is our Christmas break up. We close for four weeks over the Christmas period.

We start back on Wednesday 16th January 2013, 9.30 -11.30. Everyone is welcome.

We would like to wish everyone a Merry Christmas and a Happy New Year.

From Wakefield Plunket Volunteers

Community Diary & Classifieds

MONTHLY COMMUNITY CALENDAR

DECEMBER 2012

Sat 1	7.00 pm	Country Players "My Husbands Nuts", Village Hall
Mon 3	10.00 am	Mainly Music, Village Hall
Tues 4	7.30 pm	Village Hall Committee Meeting, Village Hall
Wed 5	8.00 pm	Country Players "My Husbands Nuts", Picnic night
	9.15 am	Craft Group, Village Hall
	9.30 am	Wakefield Playgroup, Methodist Church
Thurs 6	10.00 am	Music & Motion, Methodist Church
	6.30 pm	Circuit Class, Village Hall
Fri 7	7.00 pm	Country Players "My Husbands Nuts", Village Hall
Sat 8	All day	Next MotoXEvent at Punawai, 88 Valley
	9.00 am	Wakefield Bootsale
	7.00 pm	Country Players "My Husbands Nuts", Village Hall
Sun 9	10.00 am	Tapawera Christmas Fair, Hidden Gallery
Mon 10	10.00 am	Mainly Music, Village Hall
	3.00 pm	Wakefield Village Rest Home Christmas Function
Tues 11	7.30 pm	Wakefield Community Council Meeting, St Johns Church
Wed 12	9.15 am	Craft Group, Village Hall
	9.30 am	Wakefield Playgroup, Methodist Church
	6.00 pm	Pilates, Village Hall
Thurs 13	6.30 pm	Circuit Class, Village Hall
Sun 16	10.30 am	Childrens Christmas pageant - St Johns Worship Centre
Mon 17	10.00 am	Mainly Music, Village Hall
	1.30 pm	Christmas Goodie baking - St Johns Worship Centre
Wed 19	9.15 am	Craft Group, Village Hall
Thurs 20	All day	Last day of school for 2012 for Wakefield School
	6.30 pm	Circuit Class, Village Hall
Mon 24	All day	CHRISTMAS EVE
	9.00 pm	Midnight at Nine, carols and communion St Johns
Tues 25	All day	CHRISTMAS DAY
	9.00 am	Family Christmas celebration, St Johns Worship Centre
Wed 26	All day	BOXING DAY
Mon 31	All day	NEW YEARS EVE



JANUARY 2013 [first 2 weeks]

Tues 1	All day	HAPPY NEW YEAR!
Wed 2	8.30 am	35th Annual Wakefield Craft Fair
Sat 12	10.00 am	Tasman Skate Park Tour on the Green
Wed 23	9.00 pm	Summer Movie Alfresco, Wakefield School



Lost: Grey fleece top on roadside Edward Street
Phone 541 8521

Wakefield Baby Sitter Available
I am 16 years old and looking for local babysitting work.
Good references available,
please phone Laura on 541-9334

Missing: since the 26th in the Clifford Road area a yellow and grey cockatiel named "Dickie Bird", he could be injured any information please call Marget Atkins 541 9650

FOR SALE
WANTED
FREE
HELP

**WE NEED YOUR
FOR SALES
WANTED
OR HELP REQUESTS**

**PLEASE CONTACT
541 9005
SOME LIMITATIONS APPLY
PLEASE ASK
SOME MAY BE DEEMED
ADVERTISING AND WILL BE
CHARGED A SMALL FEE**

Village Sports News

Quay Cars Flat Track Motocross!!



***Picture courtesy of Sarah Shallcrass.....#19 Gareth Nisbett elbows his way through the pack into the first corner!!*

The number of talented motorsport athletes hailing from Nelson has seen a recent upsurge, and Wakefield is now a hub for promising motocross riders from all over the top of the South Island and Westcoast.

Each month the team at MotoXEvents Ltd create an easy motocross circuit and host a fun race day, with the aim of encouraging more families to the sport. And the numbers are growing!

Sunday November 11 dawned fine, and nearly 100 thankful racers unloaded their moto machines at this month's flat track event in Quail Valley. Racing got underway promptly, divided into eight classes, based on ability and age levels. It's natural to assume the more experienced riders would have the majority of the competitive spirit on the day, but the spectators witnessing the on-track action can vouch for the determination displayed by the junior moto pilots. The entry level class, Junior 1st Timers, had their eyes firmly on the riders in front, as well as the chequered flag. The future of motocross is secure with the depth of talent shown at this, and the other junior levels.

The Seniors represented some of the fastest competitors on the local circuit. The racing was close in more than one of the classes, upping the entertainment value for those that had come to watch and support. Your next opportunity to experience the excitement that is motocross racing will be the weekend of December 8 and 9. The MotoXEvents motocross park at Punawai, Eight Eight Valley Road, will come alive for the annual Xmas campout. Spectators entry is free.

by Sarah Shallcrass

Wakefield Football Club Heads to the Masters

Recently the elder statesmen of the Wakefield Football Club, also known as the Masters Team, competed at the South Island Masters Tournament in Timaru. With over 50 sports, involving over 500 events, and 2800 people participating, this is a huge competition run over 10 days each year. Last year the tournament was run in Nelson, and was the Wakefield team's first attempt, for which they struggled to find enough old dudes to make up a team. However, they did surprisingly well and ended up 4th out of the 16 teams vying for medals.

So this year, with much anticipation and a team now with experience, the Wakefield boys were quietly anticipating a good showing in Timaru. With a new look draw this season, it was imperative to get off to a good start. When the team lost the first game by 1-0 in the last two seconds it put them in an impossible situation. The weather gods were not on anyone's side as the entire first day consisted of howling winds and freezing cold rain. With three games on the first day, this is how it played out; play a game, almost get hypothermia, wait for two hours and play again, wait another three hours and play again. As you can imagine though, by this time it was almost water polo. The guys hung in for a hard fought tournament and ended up 6th out of the 12 teams present.

They would like to thank everyone who supported their trip and the wives for letting them go. It is back in Nelson next year, and to our beautiful wives, can we please have time off again?

Hair Raisers

Magic Can Happen

Ph 541 8312

HOUSE REPAIR
Small Job Specialist

General Carpentry
Plaster Board Stopping
Painting

BRIAN GRANT
Owner/Operator

17 Lord Auckland Road
Wakefield 7025
027 541 9250
03 541 9250

gibberjabber@xtra.co.nz
Over 20 years Experience

WAKEFIELD BOWLING CLUB

The summer bowling season is now in full swing and the club is certainly making its presence felt on the greens. In the first major interclub competition, the Nelson 5's, Wakefield teams achieved very pleasing results. Our Men's Premier team was placed third with the triples team being the only team to complete the two days unbeaten. Our Women's Premier team was also placed third in their section. This was a wonderful result and a marked improvement on last year's result and reflects the growing strength of our women's section. The second men's team playing in the Premier Reserve competition was outstanding finishing second in their section. Our second women's and third men's teams also performed admirably considering the relative inexperience of the players and bodes well for our future playing strength. In recent Nelson championship events Margaret Eames made the semi-finals of the Women's Singles and the team of Ron Charles, Tony Eames and Mark Connor made the semi-final of the Men's Championship Triples. Both results are very encouraging as three of the four players concerned have less than five years playing experience.

At the end of the month a group from our club are travelling to Adelaide to support the local players who are representing NZ in the World Championships. The Top of the South provides five of the ten players in the national team. Nelson is represented by Jo Edwards, Val Smith, Shannon McIlroy, Ali Forsyth (currently playing in Aust) and the coach Dave Edwards with Matt Gallop hailing from Marlborough. It will certainly be a great experience to watch the world's best battling it out on the greens.



Finally it must be getting around to that time of the year again because our members will be out and about selling raffle tickets for our annual Christmas hamper raffle. This is our yearly fundraising effort so please be generous and buy a ticket - you might just be lucky and win one of the two bumper hampers on offer.

Community Bowls

Wakefield Bowling Club has definitely been the place to be on Thursday evenings with a real buzz in the atmosphere as many new bowlers are sampling the game and Club members showing the way. This is all lots of fun with BBQ, drinks, chocolate prizes and team drawn prizes.

The pre Christmas sessions finish on 29 November but a new season starts on Thursday 7 February at 6-8pm.

Contact Tony on 541 8316 for more details or to enter a team for Feb.

Wakefield Owned & Trained Horse Wins Supreme Award



3 year old horse 'Adobe Park Ariella' (Ella)

3 year old horse 'Adobe Park Ariella' (Ella) won all of her classes and has taken the title of Supreme Exhibit Champion at the Nelson A&P show on 24th November.

She was shown "In hand" by Kelcie Bradley and is owned and trained by Wakefield resident, Tracey Heywood.

Wakefield Bowling Club Community Bowls



Come to the Wakefield Bowling Club and have a go.

Teams of 3-4 persons or register as an individual or couple and we will place you in a team

Community Bowls runs every Thursday for 4 weeks starting 7th Feb Time: 6pm - 8pm great fun for all.

Cost \$45 adult, Kids Free Bowls, simple instructions and a great atmosphere supplied.

Sausage Sizzle & refreshments available for purchase.

For more details and to register phone Tony 541 8316.

61 Whitby Road, Wakefield

www.sportsground.co.nz/wakefieldbowls

Community Notices

Wakefield Village Hall

For bookings, contact Rob Merilees 541 8598

Wakefield Bootsale

Wakefield Bootsale 8th December.
Come see great bargains for xmas, recycle those parcels you have never used. Some one else's junk could be your treasure.
Plants, lavender products, you name it, we have it.
From 9 to 12,
Village Green sites available,



Wakefield Craft Group

Come and join the ladies craft group
Wednesday mornings in the Village hall supper room
9.15am - 12pm.
Bring any project - sewing, knitting, crochet etc.
and join us for coffee and compnay
\$3 per morning
Phone Judy on 541 8342

FOXHILL TENNIS COURTS

FREE PUBLIC ACCESS NETS SUPPLIED

(TDC RESERVE) 658 WAKEFIELD-KOHATU
HIGHWAY BEHIND RUTHERFORD
MEMORIAL HALL.

PARK to rear or in front of hall.

Foxhill Hall Assn - Secretary 541 8882.



Baking Special Christmas Goodies

Attention young people aged 8 to 12 who like baking. Come along to the Worship Centre kitchen on Monday 17 December for an afternoon of making fun Christmas goodies. Bring \$3 and your biggest smile. 1.30 pm start.

Please RSVP by 13 Dec
To ritabell67@gmail.com, or text or ring 0272288902.

Childrens Christmas Pageant

When all the flap of Christmas preparation gets to be too much, take a break and come along to the Children's Christmas pageant at St. Johns Anglican Church Worship Centre, Sunday Dec. 16, 10.30 am. Bring all the kids you can find. They'll love it, and it may be the only chance you and they get this Christmas Festival to hear the real story of Jesus' birth as Luke and Matthew told it. Come early for a good seat, we always get a crowd.

St Johns at Christmas.

9pm Christmas Eve :
Midnight at Nine, Carols and Communion up the hill

9am Christmas Day:
Family Christmas Celebration at the Worship Centre

Live Well Stay Well

Meets fortnightly on Tuesday mornings at the Wakefield Village Hall, 9.45-11am followed by walking group 11am -12md. recommences after Easter 2013



Under the Wisteria at the Wakefield Villa Tearooms In photo, Margaret Clark, Rita Bell, Sonja Lamers, Jenny Downey, Heather Gardiner, Jo Donovan, Yvonne Moore, Eileen Lane.

This group of ladies met recently to plan next years programme for The "Live well Stay well" group. We are a friendly health and social group that meets fortnightly on Tuesday mornings with a varied programme aimed at the over 50s and those recently moved to the Wakefield and Brightwater area. We cover all sorts of issues and interesting subjects with varied speakers and activities. So watch this space and the local notice boards for whats on. If you want to register your email address with us for early notification of the programme, please call Margaret on 5419693 or Yvonne 5422235

Wakefield Brightwater ART Group

Meets every Thursday 9am-12noon.
We are a small group of enthusiastic painters, who encourage one another and enjoy painting in different medias. Come and join us at the Wakefield Village Hall. We will have a break over Christmas Holidays Our last day for the year is 29th November 2012 and we will start again on Thursday 14 February 2013.

For more info please phone Sonja on 5418176 or email:sonjal@ts.co.nz

Music and Motion



Music and Motion runs every Thursday morning at the Methodist Church on the corners of Edward and Arrow streets. Music starts at 10am and runs to 10.30am. Afterwards there is time for the kids to play and for the parents, grandparents or caregivers to have a chat over a cup of tea and a biscuit. The cost is \$2 for one child, and \$3 for two or more children. So if you want to have some Thursday morning fun, come and join in and be ready to sing and dance. If you would like to know more phone Paul Tregurtha on 544 8394 Lesley Lister on 541 8324 or just turn up on the day.

Community Directory

Citizens Advice Bureau
548 2117 - 0800 367 222

Guiding Co-ordinator
Sue Burrowes 541 9689

Lord Rutherford Memorial Hall, Foxhill
Helen Pullan 541 8058

Pigeon Valley Steam Museum
Alan Palmer 027 319 7427

Rural Ramblers
Carolyn 541 9200

Spring Grove Drill Hall
C. Pike 542 3904

Totaradale Golf Club
Jacquie 541 8030

Wakefield Anglican Church - St Johns

Meet Sun 9.00am; 10.30am
Rev. Allan Wasley 541 8883

Wakefield Brownies
Vin Law 541 9190

Wakefield Community Library
Tues 10.30-11.30am
Friday 2.30-4.00pm
Wendy Gibbs 541 8490
Pam Dick 541 8392

Wakefield Football Club
Richard Malcolm 541 9429

Wakefield Medical Centre
541 8911

Wakefield Playcentre
Mon - Friday 9.30 - 12
Contact: 541 8866

Wakefield School
Edward Street 541 8332

Wakefield Scout Group
Sheryl Guyton 541 9178

Wakefield Toy Library
Open Sat 9.30-11.30am
Chris Gaul 541 8148

Wakefield Volunteer Fire Brigade
CFO Simon Ladley 027 2577 786

Womens Biz
Justyne McGaveston 522 4488
Sonia Emerson 541 9005

Window on Wakefield
Articles/Content - 541 9005
Sonia Emerson

Country Players (Drama)
Philip Calder 541 8442

Junior Country Players
Dixie McDonald 541 8862

Nelson Vintage Engine & Machinery Club
Allan 027 319 7427

Pinegrove Kindergarten
03 542 3447

Rural Women
Dawn Batchelor 542 3628

St Joseph's Catholic Church
Sun 8am, Wed 10am
Fr David Gruschow 544 8987

Waimea Sheepdog Trial Club
Colin Gibbs 541 8435
gibbs@ts.co.nz

Wakefield Arthritis Group
Tues except 3rd in month 10am
Nancye Wearing 541 9040

Wakefield Bush Restoration Society
Doug South 541 8980

Wakefield Craft Fair
Leanne and Glen Turner
541 8306

Wakefield/Brightwater Guides
Sarah Arnold 5419481

Wakefield Methodist -Presbyterian Church

Meet 1st & 3rd Sundays 11am
Rev Paul Tregurtha 544 8394

Wakefield Plunket
Donna Todd 541 8583

Wakefield School/ Community Swimming Pool
Contact Phill Platt on 027 231 7610

Wakefield Smallbore Rifle Club
Ian Hutchings 541 8342

Wakefield Village Rest Home
Gerri Harvey 541 8995

Wanderers Sports Club
542 3344

Window on Wakefield
Advertising - 541 9641
Genie & Lindsay Bradley

Focus Wakefield
Diane Blackburn 541 9725

Just Gymnastics
Linda Mace 546 6013

NZ Postcard Society Inc.
Doug South 541 8980

Richmond Lions - Wakefield Representative
Ivan Burrowes 541 9689

Spring Grove Church of Christ
Meet Sundays 10am
541 8011

Top of the South Rural Support Trust - gibbs@ts.co.nz
Colin Gibbs 541 8435

Waimea Sth Historical Society
Jeannine Price 542 3033

Wakefield Bowling Club
Margaret Eames 541 8316

Wakefield Community Council
Allan Wasley 541 9622

Wakefield Daidokan Karate Club
Andrew Paxton 0277 503606

Wakefield Indoor Bowls Club
Ren Olykan 541 8275

Wakefield Pippins
Kirsty Turner 541 9799

Wakefield Preschool
Contact: 541 8086

Wakefield School PTA
katdonmac@xtra.co.nz
Katrina Mclean 541 9049

Wakefield Tennis Club
Ngaire Calder 541 9419

Wakefield Village Hall
Rob Merilees 541 8598

Way to Go Co-ordinator
Vanessa Mairs 027 511 8826

12 NIGHT GREEK ISLES CRUISE ON RUBY PRINCESS

Venice to Rome from

\$2399pp Twin Share

Incl. US\$85 onboard credit per stateroom

Based on 24 October 2013 sailing.
Cat ID inside stateroom. Conditions apply.

NEW ZEALAND
holidays
travel broker



Nelson Travel Broker
your journey starts here

P: 03 541 8417 E: info@nelsontravelbroker.co.nz
www.nelsontravelbroker.co.nz

Locally Owned & Operated



Sue Ketel & Katrina Smith



All Accounts Matter Ltd

For All Your Accounting and Tax Needs

Sonia Emerson
Chartered Accountant

Mobile: 021 221 1009
105 Whitby Road, Wakefield 7025
Phone: 03 541 9005 Fax: 03 541 9305
Email: allaccountsmatter@gmail.com

CHARTERED
ACCOUNTANTS

FOR SALE IN WAKEFIELD

NEW LISTING



25 TOTARA VIEW ROAD \$419,000+
Cosy, Modern 3 Bedroom Cottage On 5093m²
Double garage, off-street parking. Flat walk to the Wakefield Village. Fantastic opportunity to go rural!



4 EIGHTY EIGHT VALLEY ROAD \$435,000
Huge Section, 4 Big Bedrooms And A 10x8m Garage!
The current owners are off to Oz and this could be your chance to upscale at an affordable price! The home has an updated kitchen and bathroom, 4 double bedrooms with built in robes, and an open plan living/dining area with logburner on wetback. The garage is a large 10m x 8m, and there is lots of extra parking on the huge 2934m² section (¾ acre).



70 TOTARA VIEW ROAD \$495,000
Charming Modern 3 Bedroom Home On 1.2 Hectares
of gorgeous gardens and a few paddocks, double internal garage plus extra off-street parking.



46 EIGHTY EIGHT VALLEY ROAD \$549,000+
Fun Family Farmlet On 1.2 ha Renovated 3 bedroom plus sleepout home, with excellent outbuildings, orchard, nut trees, plus paddocks. Lovely garden setting.



81 WHITBY ROAD \$299,000+
Lovely 3 Bedroom Home with north facing, fully fenced yard, complete with new bbq deck. Double garage. Rental appraisal \$350-\$370 per week.

I first met Caraline, Andrew and Solomon Dyson about three years ago at an open home in Wakefield. I discovered that they were renting near by, that they had come from Wakefield in Yorkshire, England, and were looking to make their home in 'our' Wakefield. I really enjoyed Caraline's wicked sense of humour and quick wit, and we became friends. Caraline's background in sales and marketing quickly became evident as she started offering suggestions and ideas about how I could improve my own business. We figured that we should make it official when Solomon started morning kindergarten, and I was rapt when she joined the team as my fabulous Personal Assistant. I am very appreciative of Caraline's support, so whenever I am unavailable, she's the person to talk to!



WENDY PEARSON
021 567 722 / 544 5488



LICENSED REAL ESTATE SALESPERSON (REAA 2008)

WINDOW ON WAKEFIELD
ONLINE EDITION BROUGHT TO YOU
BY



PHONE 03 541 9641